



For Sublease

**Jeff Chaney, SIOR**  
Executive Vice President  
+1 425 260 8900  
jeff.chaney@colliers.com

**Seamus Ober**  
Senior Associate  
+1 425 468 0702  
seamus.ober@colliers.com

---

**Colliers Bellevue**  
11225 SE 6th Street, Suite 240  
Bellevue, WA, 98004  
colliers.com

## Axis Kirkland Building

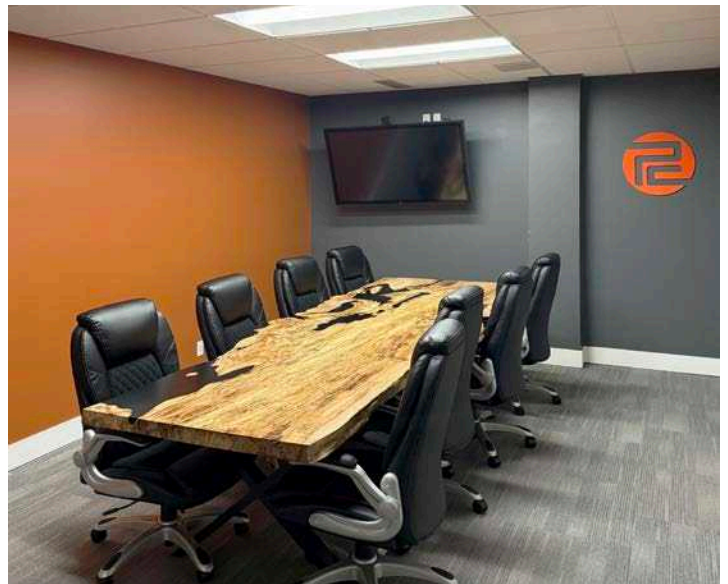
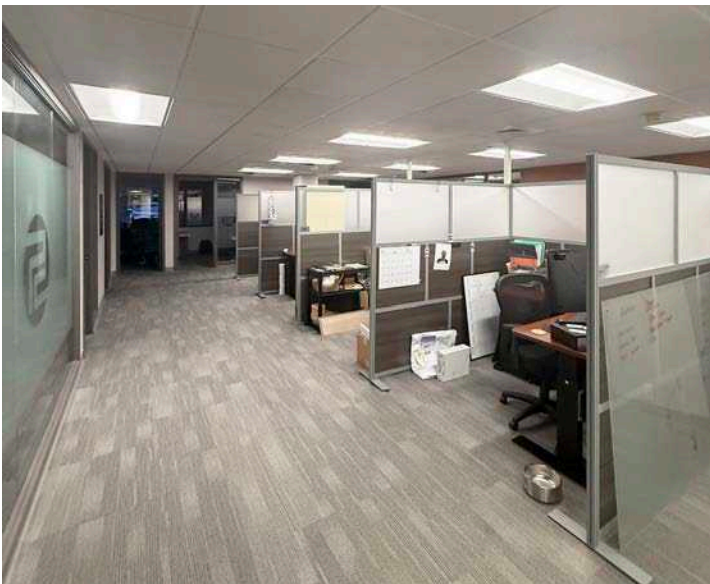
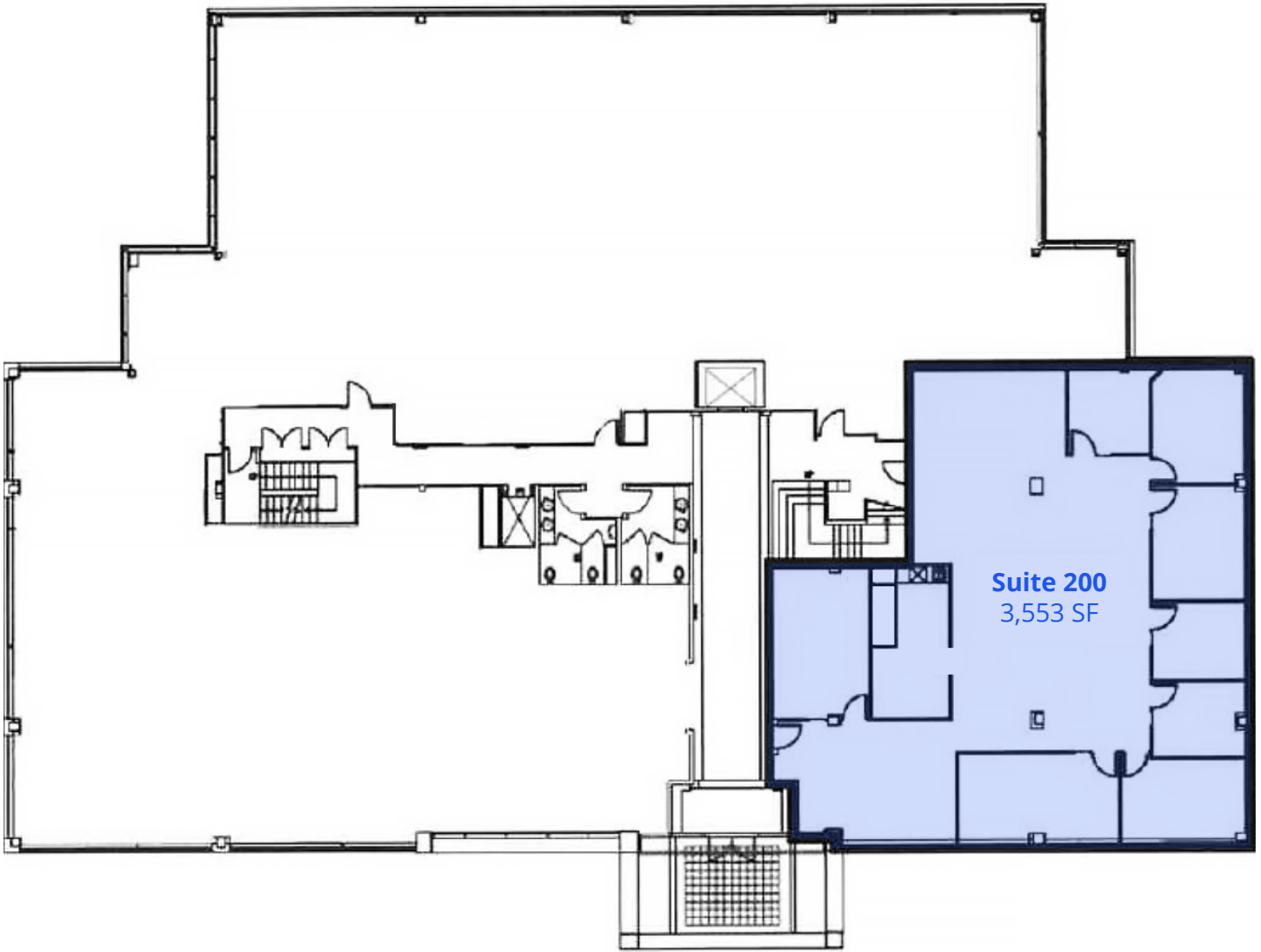
4030 Lake Washington Blvd NE. Kirkland, WA

### Suite 200: 3,553 SF

- Exterior refresh with new paint & lobby renovations
- Free abundant surface and garage parking
- Class A office building, located in park-like campus
- LEED Gold Certified Building
- Comcast Fiber & Verizon FIOS
- Easy access to SR-520 and I-405
- 2.5 miles from downtown Kirkland
- 3.5 miles from downtown Bellevue
- Close proximity to restaurants, hotels, and shopping centers
- Asking Rent: \$25.00/SF NNN
- Sublease through 02/28/2030

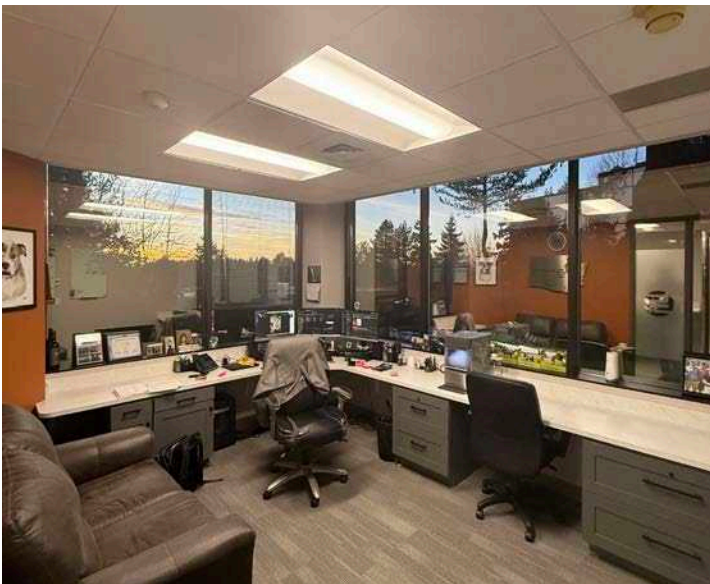
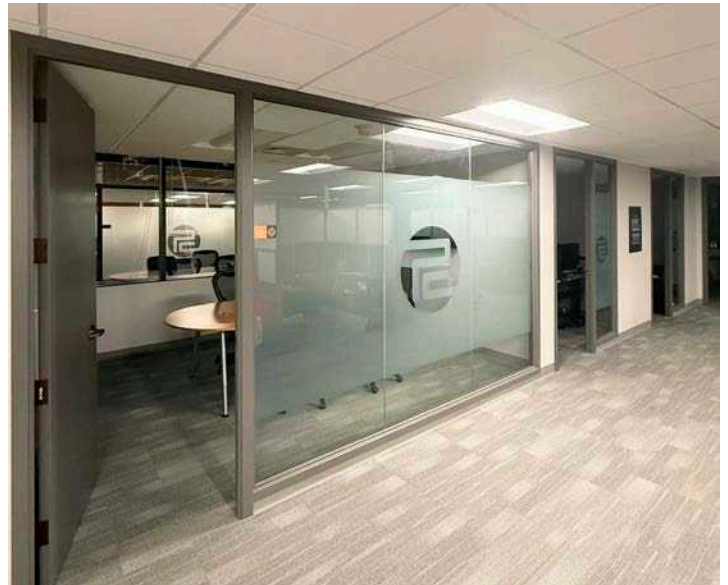
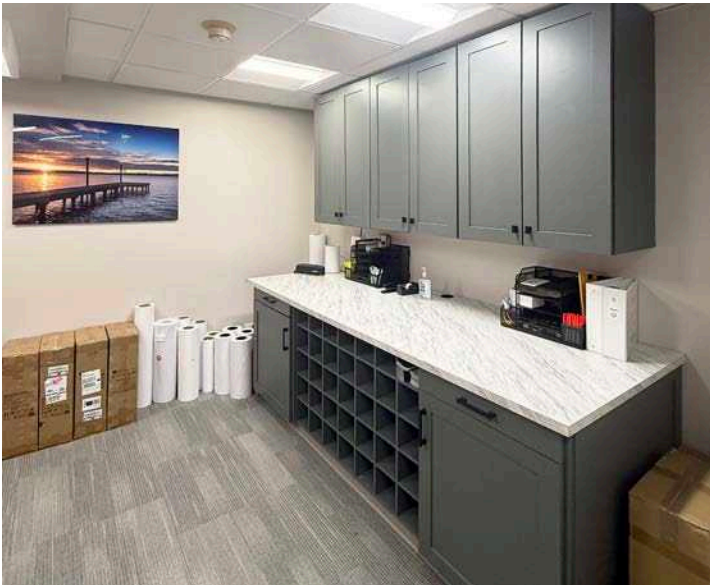
For Sublease

4030 Lake Washington Blvd NE. Kirkland, WA



For Sublease

4030 Lake Washington Blvd NE. Kirkland, WA





**Colliers Bellevue**  
11225 SE 6th Street, Suite 240  
Bellevue, WA, 98004  
colliers.com

**Jeff Chaney, SIOR**  
Executive Vice President  
+1 425 260 8900  
jeff.chaney@colliers.com

**Seamus Ober**  
Senior Associate  
+1 425 468 0702  
seamus.ober@colliers.com