

FOR LEASE

NEWPORT PLACE

*1,139 SF - 6,440 SF Office Spaces
Available Now*

4122 FACTORIA BLVD SE, BELLEVUE, WA 98006

KIDDER.COM

 **Kidder
Mathews**



PROPERTY HIGHLIGHTS

TOTAL RBA	±40,877 SF
PARKING RATIO	4.3/1,000 SF
RATES	Call brokers for rates

LOCATION HIGHLIGHTS

Outstanding visibility, located in the heart of Factoria

Easy access to I-405 and I-90

Abundant area amenities nearby, including the adjacent Factoria Mall

AVAILABILITIES

Suite	Size	Availability
SUITE 101	1,222 - 6,440 SF	Now
SUITE 305	1,408 SF	Now
SUITE 310	2,304 SF	Now
SUITE 401	1,876 SF	60 days notice
SUITE 402	1,139 SF	10/01/2026

4 MIN
DRIVE TO I-90

6 MIN
DRIVE TO I-405

NEWPORT PLACE



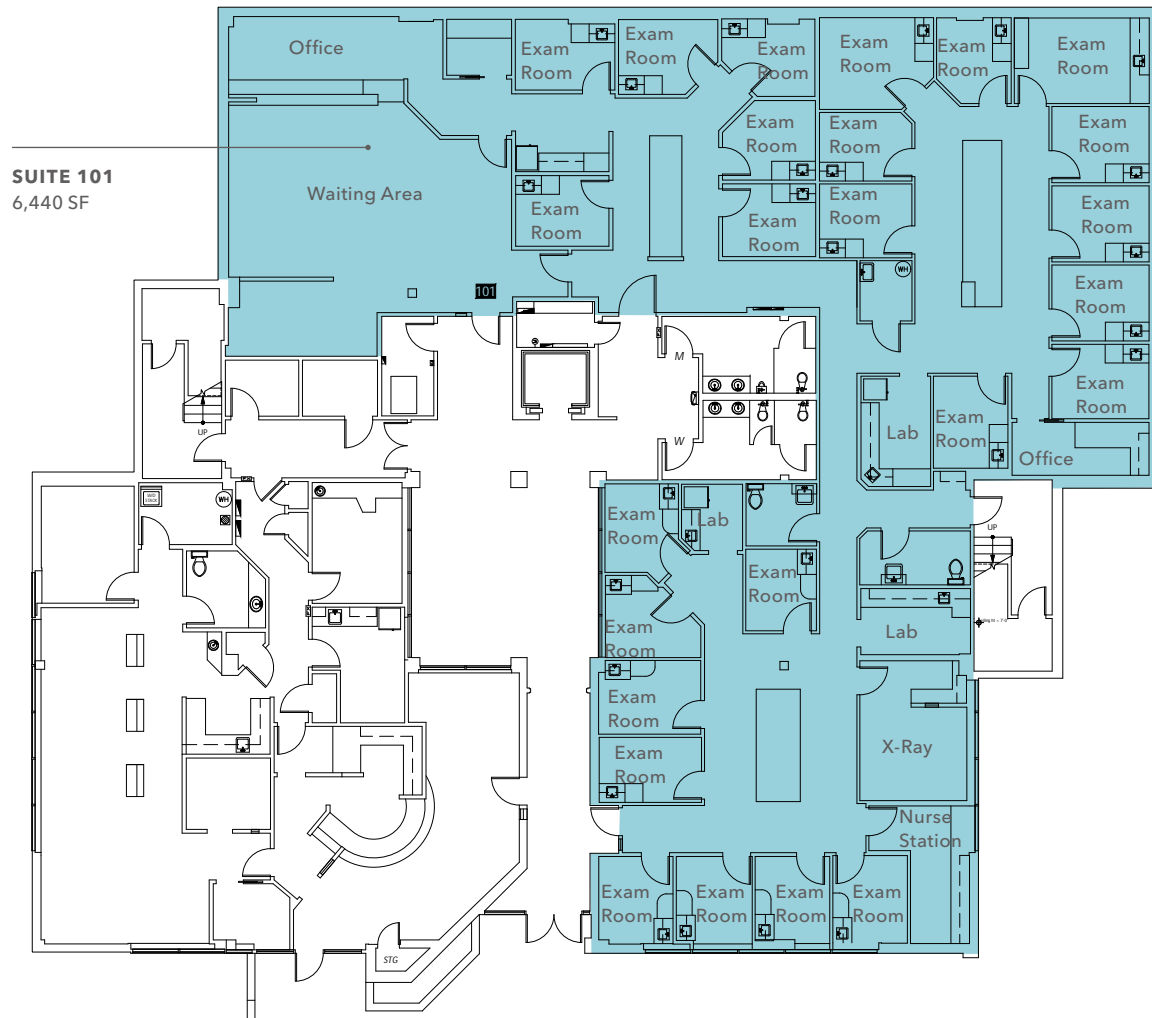
SUITE 101 | FLOORPLAN

6,440 SF

AVAILABLE

NOW

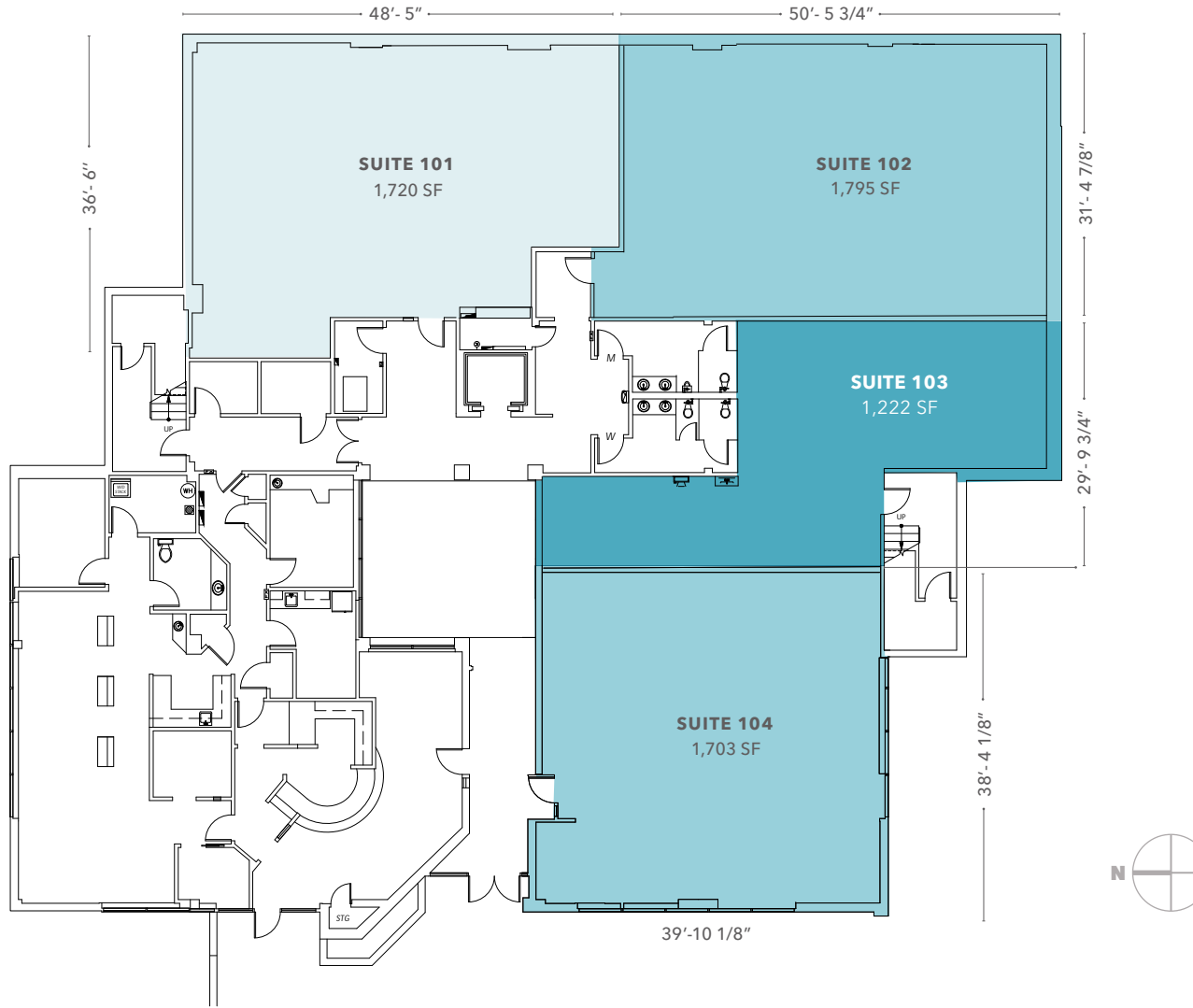
AVAILABLE



SUITE 101
6,440 SF



SUITE 101 | DEMISING FLOOR PLAN



4
POTENTIAL SUITES

NOW
AVAILABLE

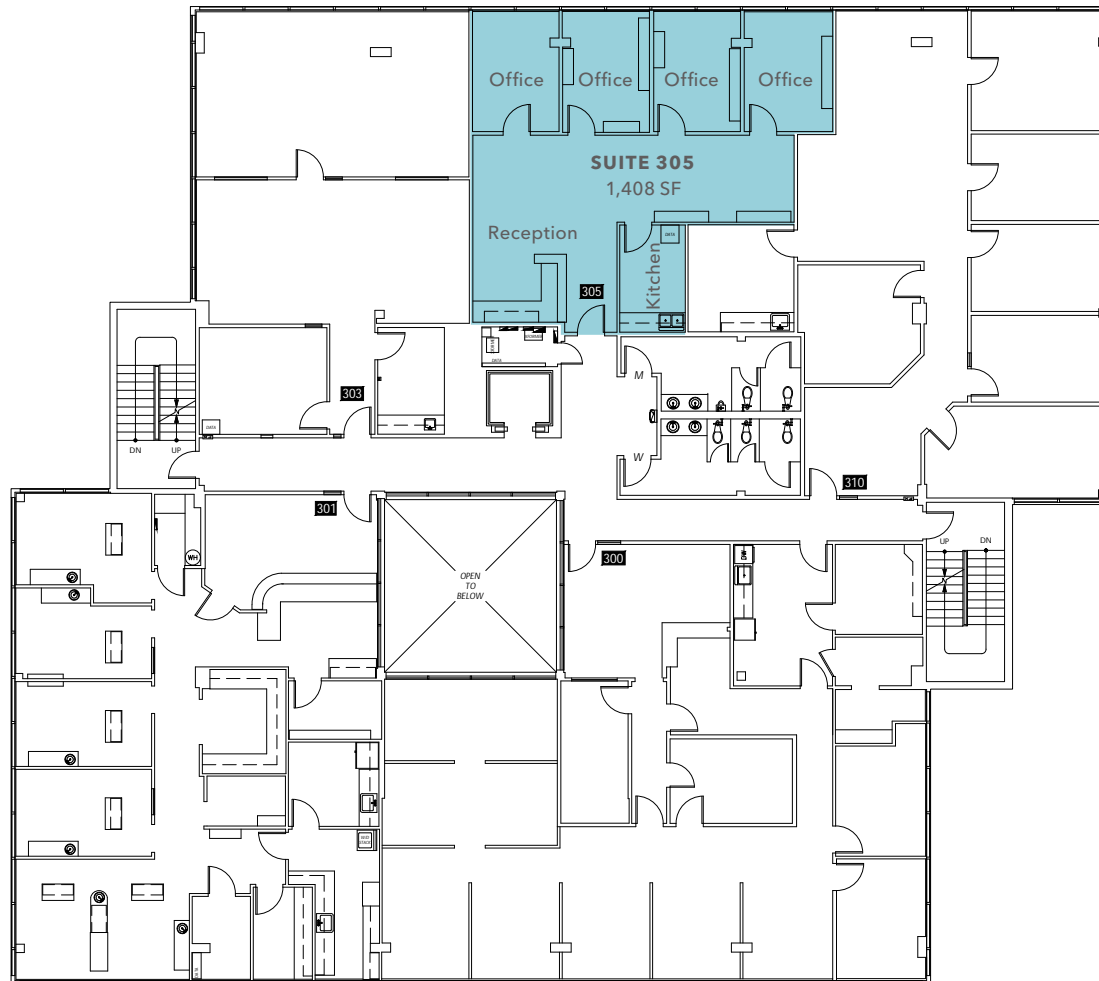
SUITE 305 | FLOOR PLAN

1,408 SF

AVAILABLE

NOW

AVAILABLE



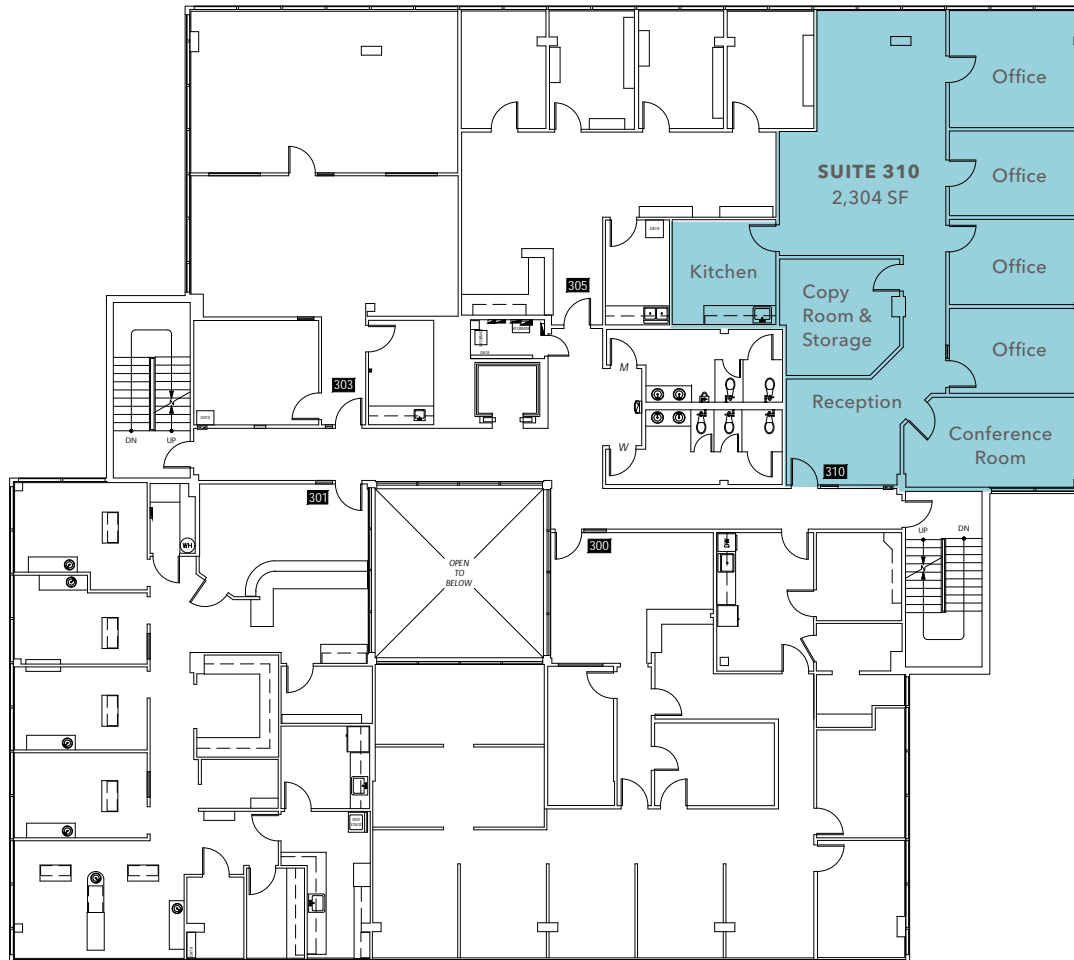
SUITE 310 | FLOOR PLAN

2,304 SF

AVAILABLE

NOW

AVAILABLE



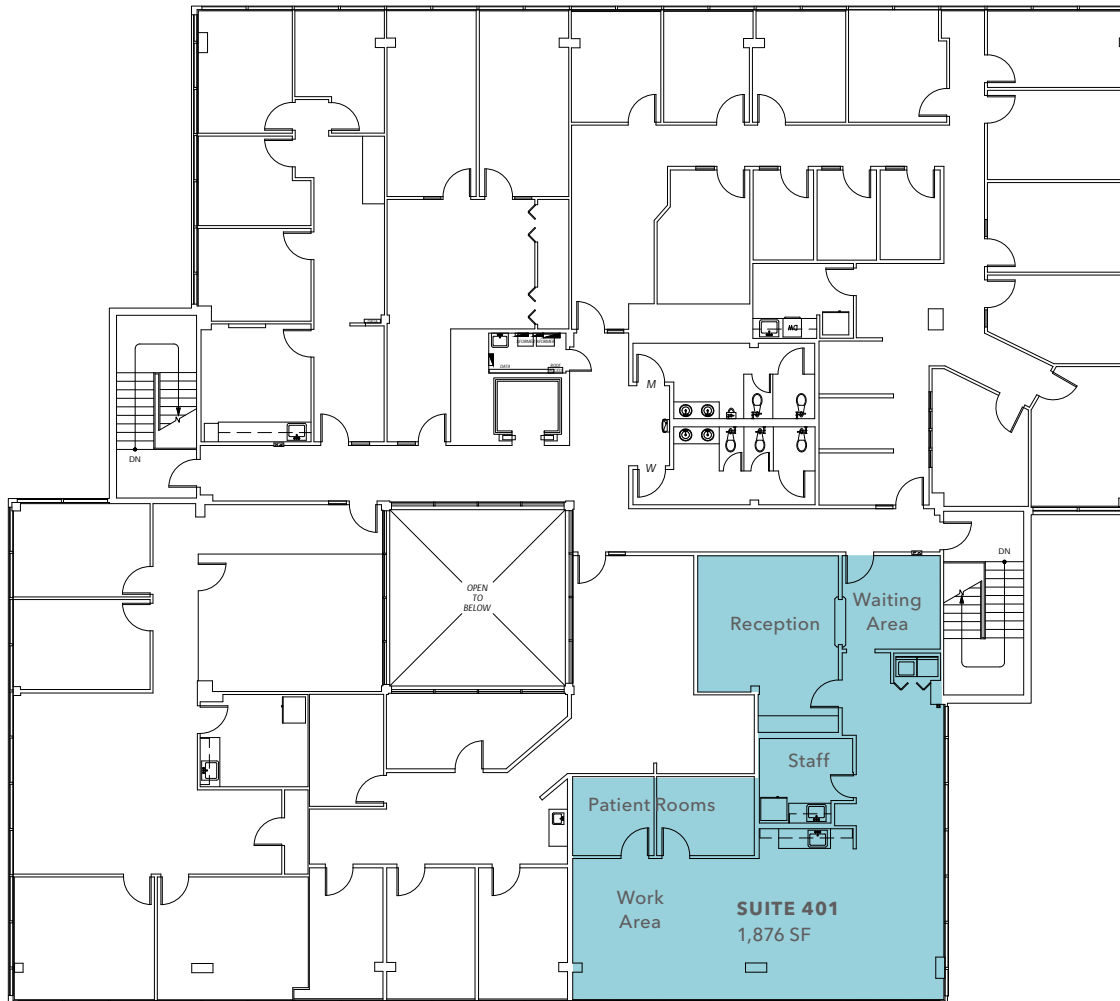
SUITE 401 | FLOOR PLAN

1,876 SF

AVAILABLE

*60 DAYS
NOTICE*

AVAILABLE



SUITE 402 | FLOOR PLAN

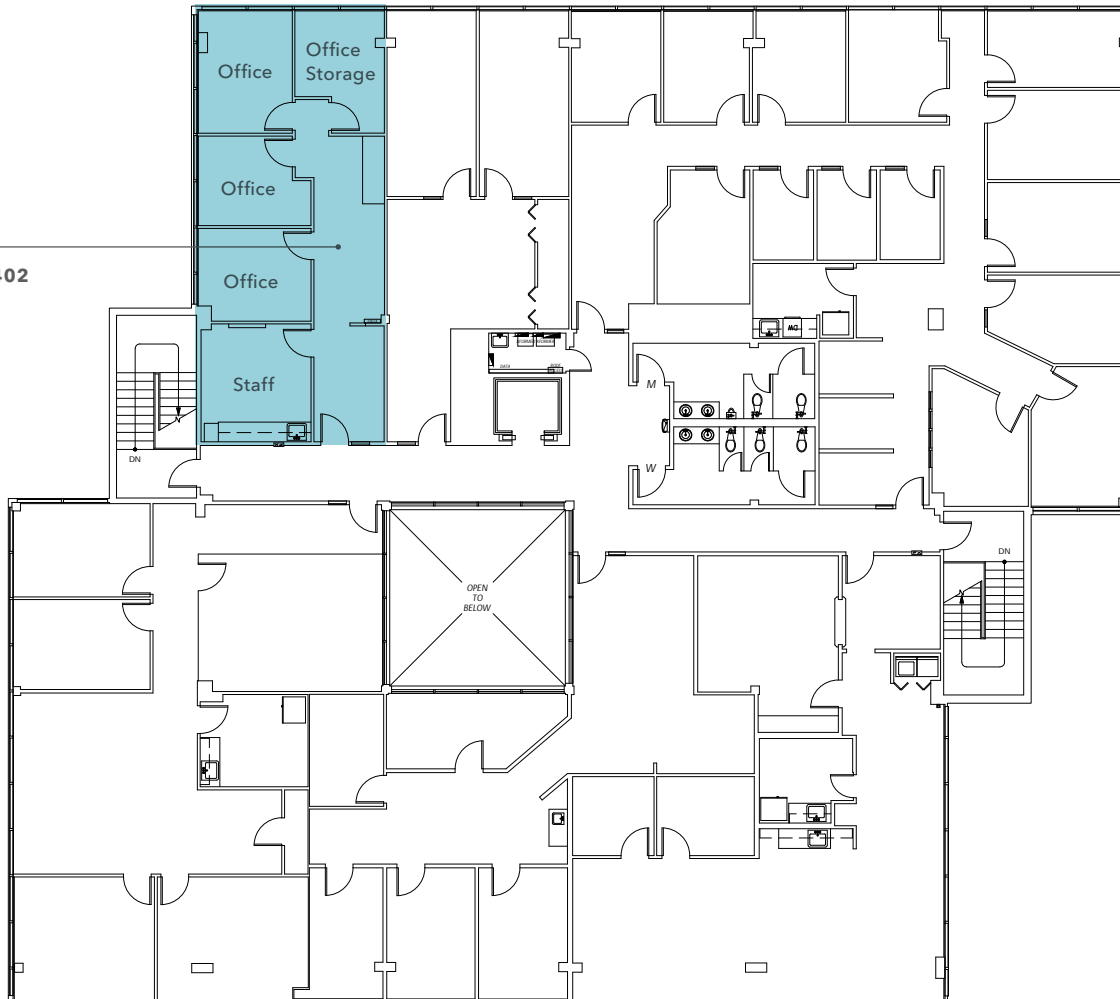
1,139 SF

AVAILABLE

10/01/26

AVAILABLE

SUITE 402
1,139 SF



NEWPORT PLACE





NEWPORT PLACE

*For more information on
this property, please contact*

GARY GUENTHER
Executive Vice President
425.450.1154
gary.guenther@kidder.com

ALEX ANDREA
Associate Vice President
425.450.1163
alex.andrea@kidder.com

KIDDER.COM

This information supplied herein is from sources we deem reliable. It is provided without any representation, warranty, or guarantee, expressed or implied as to its accuracy. Prospective Buyer or Tenant should conduct an independent investigation and verification of all matters deemed to be material, including, but not limited to, statements of income and expenses. Consult your attorney, accountant, or other professional advisor. All Kidder Mathews designs are the sole property of Kidder Mathews. Branded materials and layouts are not authorized for use by any other firm or person.

