

KALANI INDUSTRIAL CENTER

FOR LEASE
Up to 17,246 SF Industrial/Flex
space now available



4301 78TH ST SW MUKILTEO, WA 98275

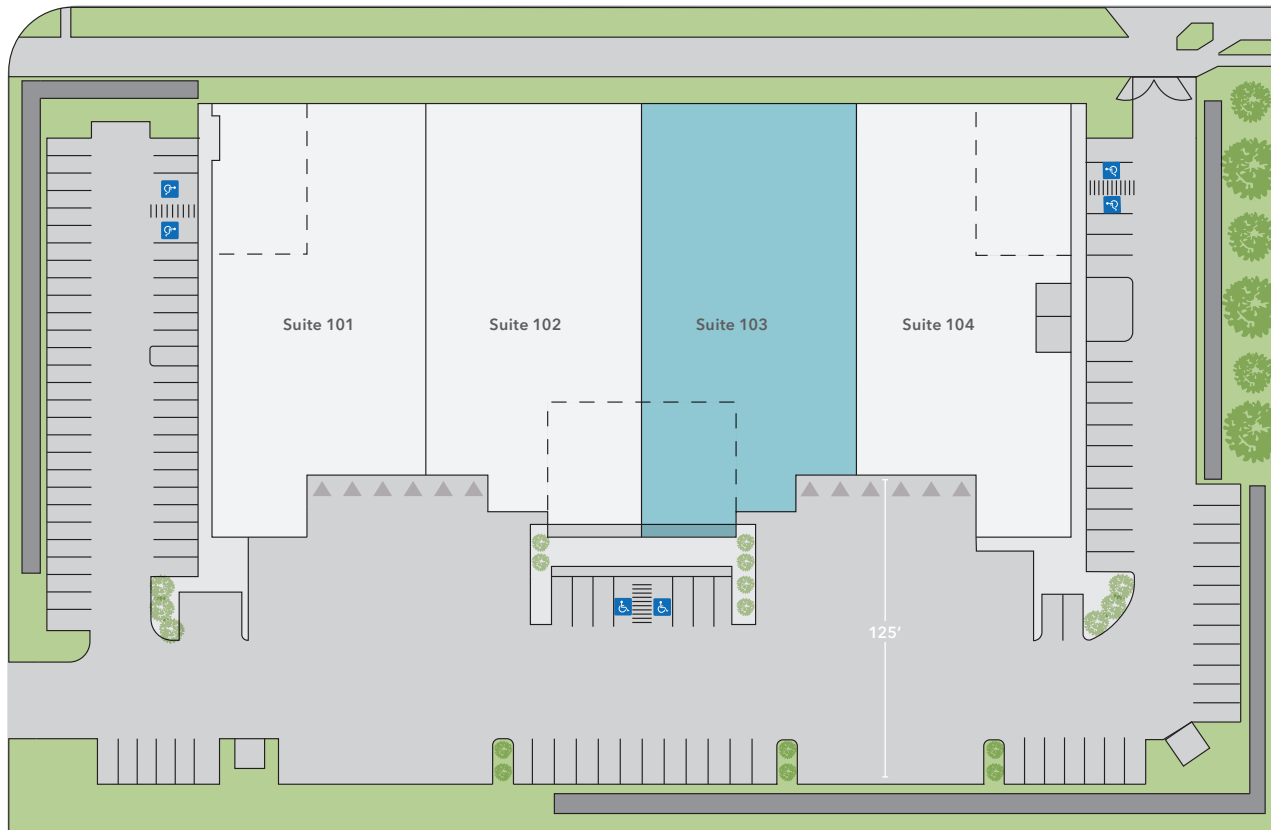
km Kidder
Mathews


FOR LEASE

Kalani Industrial Center

4301 78TH ST SW MUKILTEO, WA 98275

Site Plan



 Mezzanine

KIDDER.COM

This information supplied herein is from sources we deem reliable. It is provided without any representation, warranty, or guarantee, expressed or implied as to its accuracy. Prospective Buyer or Tenant should conduct an independent investigation and verification of all matters deemed to be material, including, but not limited to, statements of income and expenses. Consult your attorney, accountant, or other professional advisor.

Highlights

SUITE 103 17,246 SF
(± 500 SF office)

NEW construction

DOCK and grade
level loading

ESFR sprinklers

24' clear

3-PHASE power

CLOSE proximity to I-5,
and SR525/526

UNIQUE park-like setting

MATTHEW HAGEN, SIOR
425.283.5782
matt.hagen@kidder.com

MATTHEW P. HENN
206.890.7800
matt.henn@kidder.com



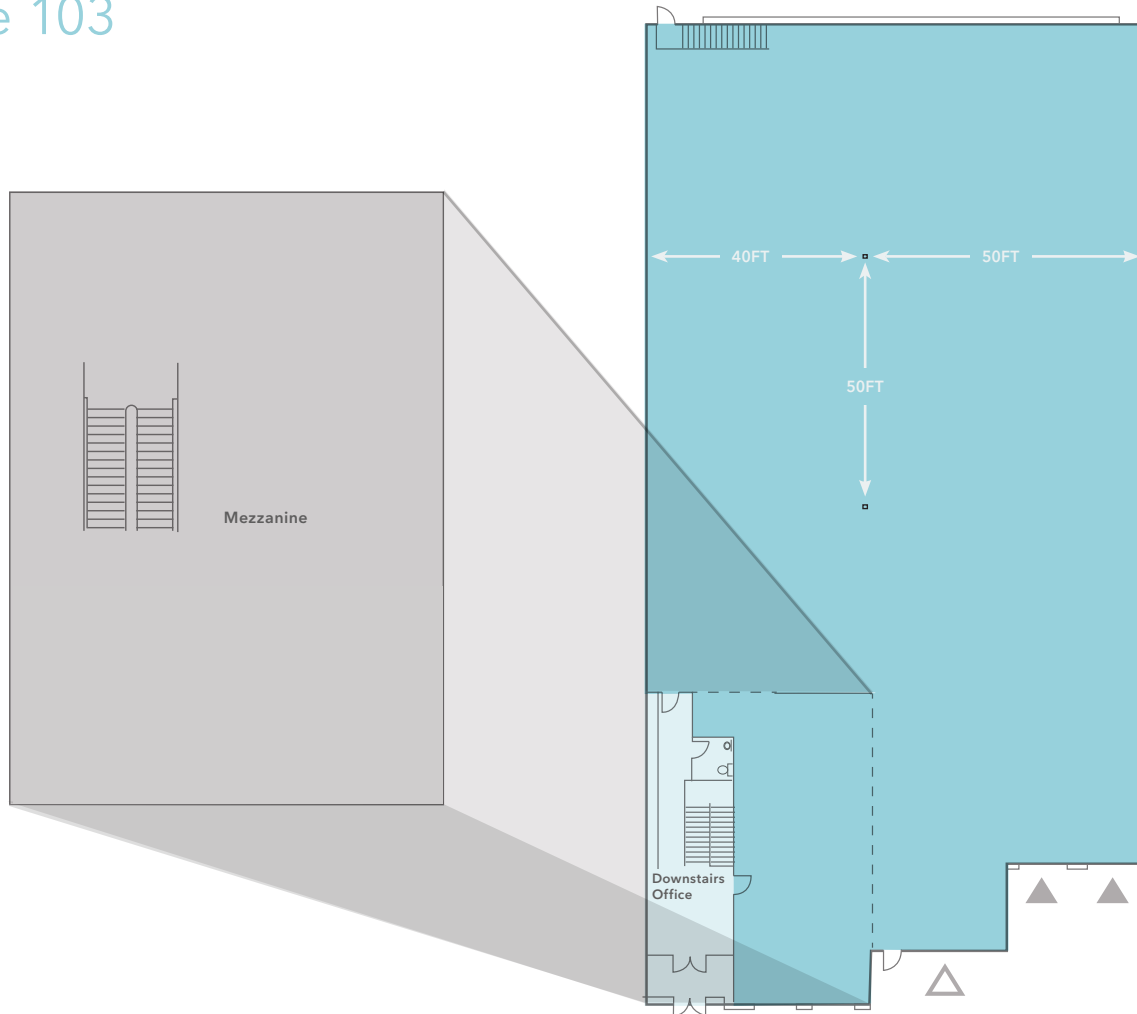
 **Kidder
Mathews**

FOR LEASE

Kalani Industrial Center

4301 78TH ST SW MUKILTEO, WA 98275

Suite 103



17,246 SF

TOTAL AREA (± 500 SF OF OFFICE)

14,866 SF

FIRST FLOOR

± 500 SF

DOWNSTAIRS OFFICE

2,255 SF

MEZZANINE

MATTHEW HAGEN, SIOR

425.283.5782

matt.hagen@kidder.com

MATTHEW P. HENN

206.890.7800

matt.henn@kidder.com

▲ Dock high doors

△ Grade level doors

KIDDER.COM

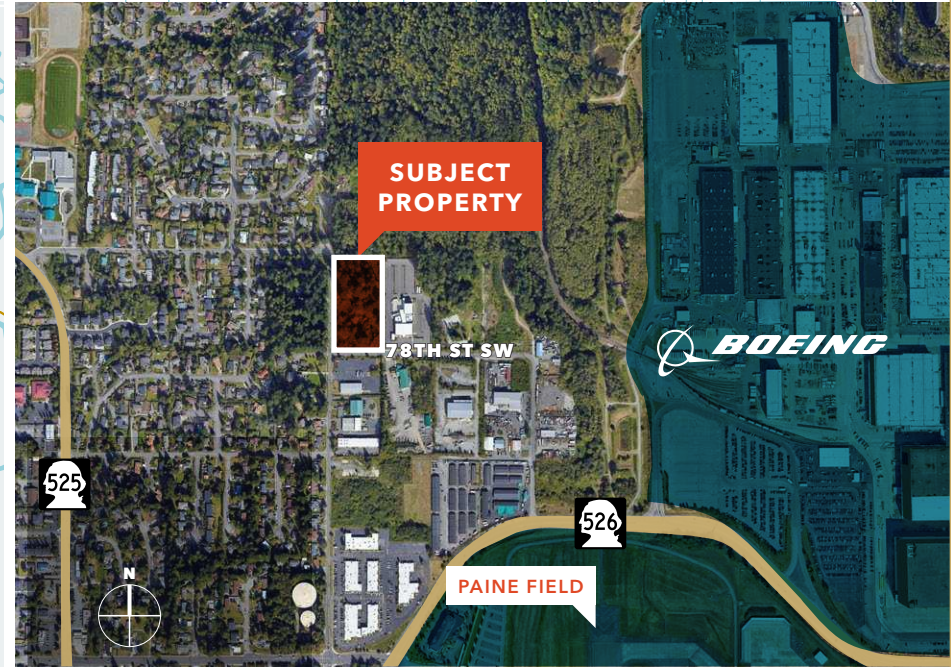
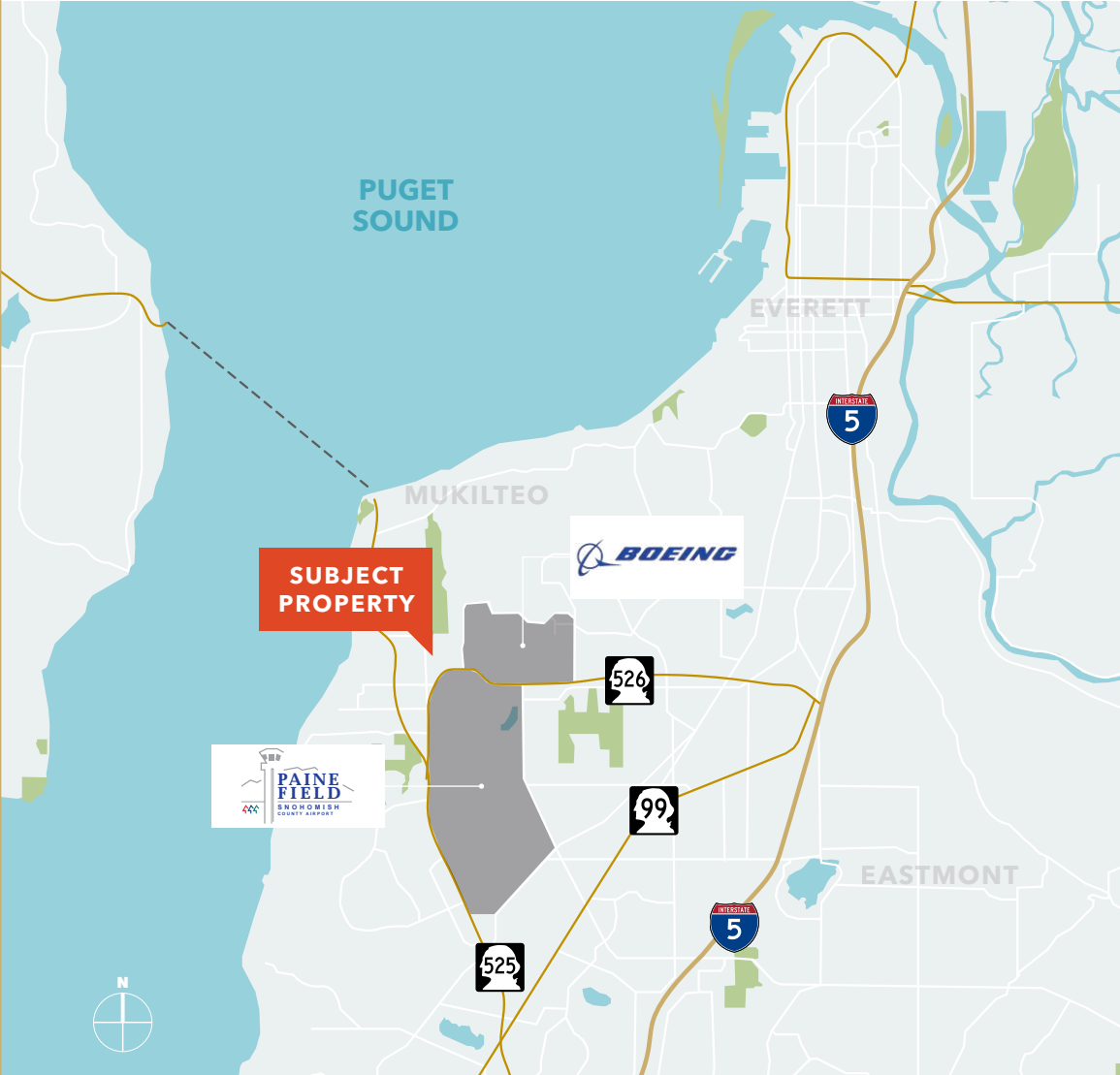
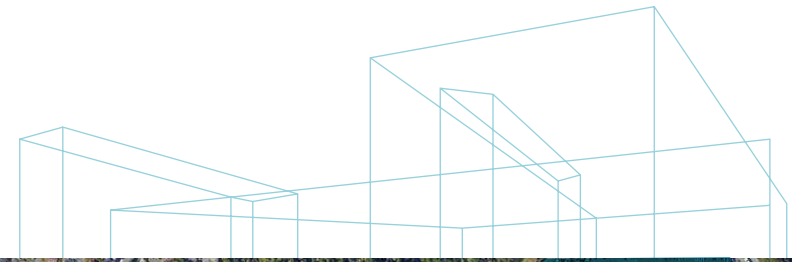
This information supplied herein is from sources we deem reliable. It is provided without any representation, warranty, or guarantee, expressed or implied as to its accuracy. Prospective Buyer or Tenant should conduct an independent investigation and verification of all matters deemed to be material, including, but not limited to, statements of income and expenses. Consult your attorney, accountant, or other professional advisor.

km Kidder Mathews

FOR LEASE

Kalani Industrial Center

4301 78TH ST SW MUKILTEO, WA 98275



This information supplied herein is from sources we deem reliable. It is provided without any representation, warranty, or guarantee, expressed or implied as to its accuracy. Prospective Buyer or Tenant should conduct an independent investigation and verification of all matters deemed to be material, including, but not limited to, statements of income and expenses. Consult your attorney, accountant, or other professional advisor.



Contact brokers for rates

MATTHEW HAGEN, SIOR
425.283.5782
matt.hagen@kidder.com

MATTHEW P. HENN
206.890.7800
matt.henn@kidder.com

KIDDER.COM

This information supplied herein is from sources we deem reliable. It is provided without any representation, warranty, or guarantee, expressed or implied as to its accuracy. Prospective Buyer or Tenant should conduct an independent investigation and verification of all matters deemed to be material, including, but not limited to, statements of income and expenses. Consult your attorney, accountant, or other professional advisor.