

FOR SALE OR LEASE

BUILDING A

12,000 TO 130,151 SF

TALL FIRS INDUSTRIAL PARK

A Panattoni Development

14621 AND 14719 170TH AVENUE EAST, BONNEY LAKE, WA

 **PANATTONI**



NAI Puget Sound
Properties

David Douglas, SIOR, CCIM
Partner
+1 253 203 1326
ddouglas@nai-ppsp.com

Kyle Schipper, SIOR
Partner
+1 253 203 1320
kschipper@nai-ppsp.com

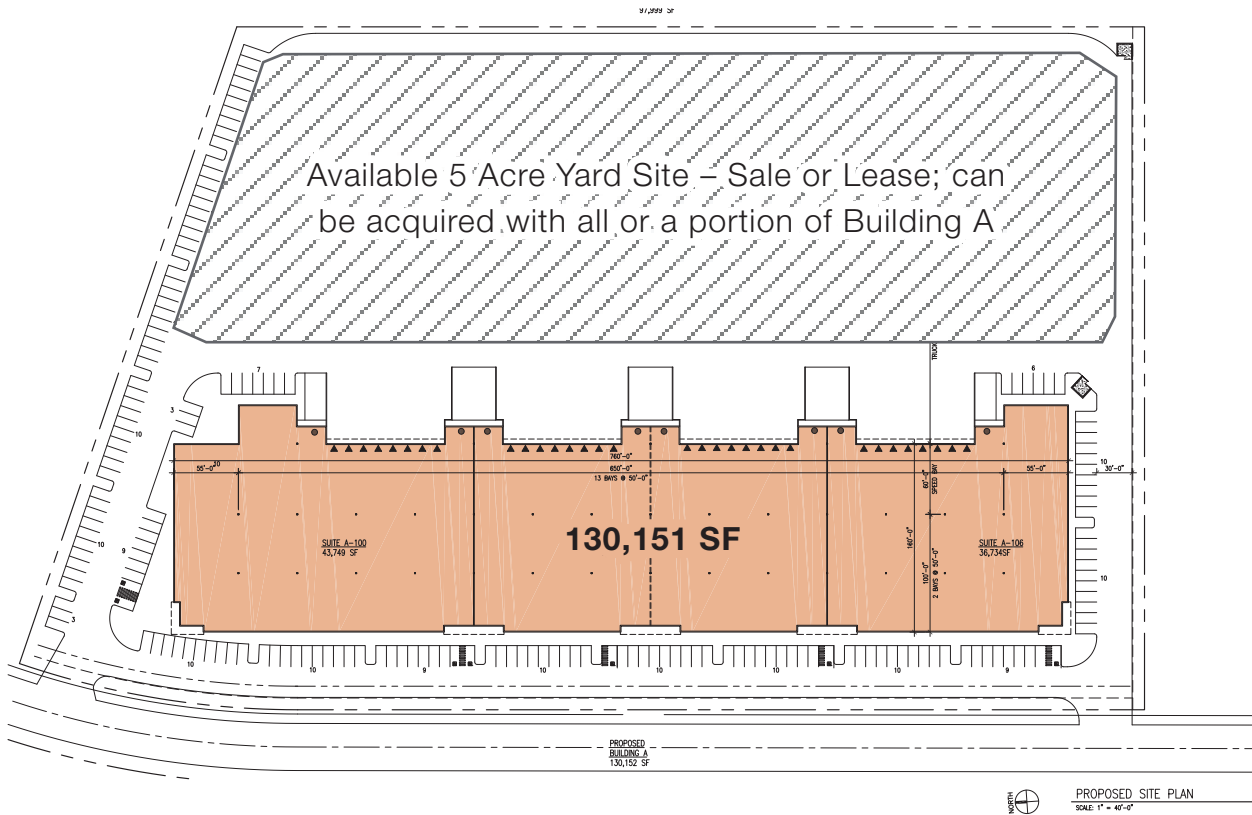
Arie Salomon, SIOR, CCIM
Principal
+1 425 586 5636
asalomon@nai-ppsp.com

Kent Channing
Partner
+1 425 586 5628
kchanning@nai-ppsp.com



THE INFORMATION CONTAINED HEREIN HAS BEEN GIVEN TO US BY THE OWNER OF THE PROPERTY OR OTHER SOURCES WE DEEM RELIABLE, WE HAVE NO REASON TO DOUBT ITS ACCURACY, BUT WE DO NOT GUARANTEE IT. ALL INFORMATION SHOULD BE VERIFIED PRIOR TO PURCHASE OR LEASE.

Tall Firs Industrial Park - Building A



HIGHLIGHTS



Class A Industrial Project



30' Clear Height
Dock High & Drive-In Loading



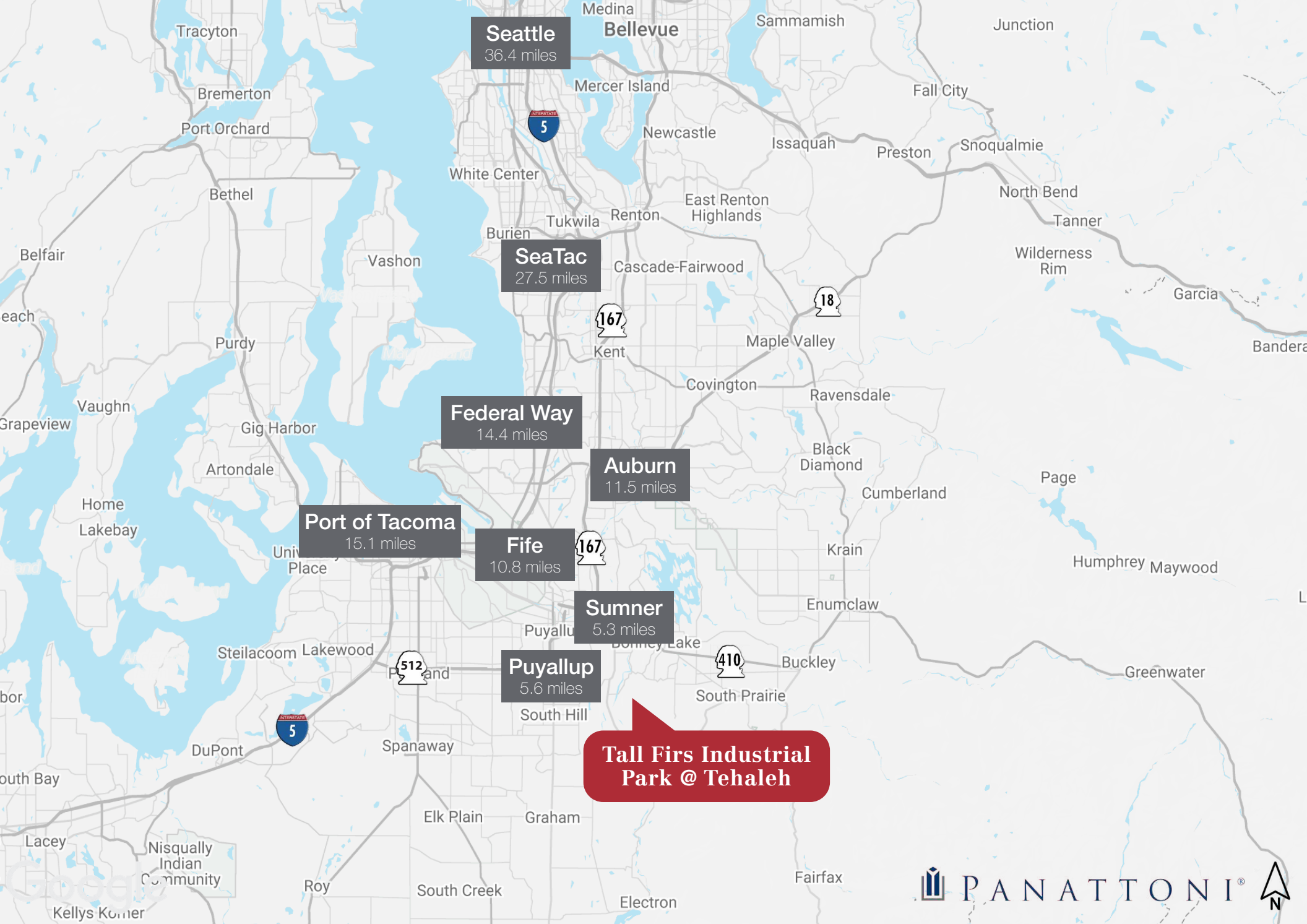
Mileage to major cities:
Sumner - 5.3
Puyallup - 5.6
Port of Tacoma - 15.1
Seattle - 36.4



Available Now



Tall Firs Industrial Park is located in the 4,700 acre planned community of Tehaleh and features local amenities and CC&Rs to protect value and enhance your long term investment.



**Tall Firs Industrial
Park @ Tehaleh**



THE INFORMATION CONTAINED HEREIN HAS BEEN GIVEN TO US BY THE OWNER OF THE PROPERTY OR OTHER SOURCES WE DEEM RELIABLE, WE HAVE NO REASON TO DOUBT ITS ACCURACY, BUT WE DO NOT GUARANTEE IT. ALL INFORMATION SHOULD BE VERIFIED PRIOR TO PURCHASE OR LEASE.