



# LAKEVIEW PLACE

*4,380 SF (Divisible) Office Space  
Available for Lease in Kirkland*

6725 116TH AVE NE, KIRKLAND, WA



*A premium office building located in Kirkland, which has been ranked as one of the best small cities in the U.S.\**



**THREE-STORY  
OFFICE  
BUILDING**



**RENOVATED  
COMMON  
AREAS**



**COVERED  
PARKING &  
STORAGE**



**ROOFTOP  
HVAC UNITS**



**VIEWS OF LAKE  
WASHINGTON &  
OLYMPIC MTS**



**ADJACENT TO  
PICKLEBALL  
COURTS**

Concrete and wood-framed premium office building

Passenger elevator serving all three floors

Recently upgraded with a new roof and HVAC system

Easy access to I-405

Close to Kirkland's amenities, bus line, biking trails

Lots of windows and natural light

Adjacent to Houghton Park & Play public pickleball courts

# SUITE 200

4,380 RSF

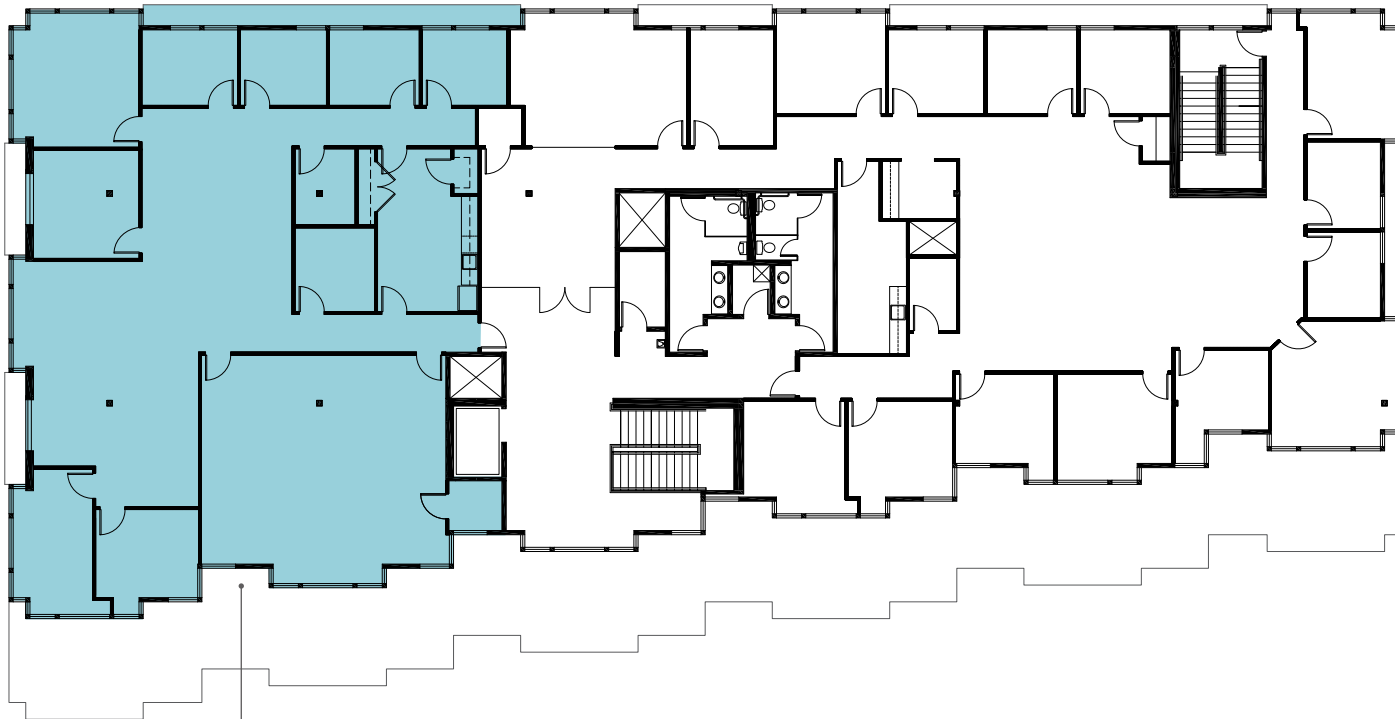
AVAILABLE

\$29.00/SF

ANNUAL RENTAL RATE, NNN

NOW

AVAILABLE



SUITE 200  
4,380 RSF

# SUITE 200 - DEMISING PLAN 2



SUITE 200C  
2,500 RSF

SUITE 200D  
1,880 RSF

*2,500 RSF*

SUITE 200C TOTAL SF

*1,880 RSF*

SUITE 200D TOTAL SF

*\$29.00/SF*

ANNUAL RENTAL RATE, NNN

*NOW*

AVAILABLE

LAKEVIEW PLACE



LAKEVIEW PLACE



# LAKEVIEW PLACE



*For more information about  
this property, please contact*

**GARY GUENTHER**

Executive Vice President

425.450.1154

[gary.guenther@kidder.com](mailto:gary.guenther@kidder.com)

**CHARLES CAPLICE**

Senior Associate

425.450.1160

[charles.caplice@kidder.com](mailto:charles.caplice@kidder.com)

**KIDDER.COM**

This information supplied herein is from sources we deem reliable. It is provided without any representation, warranty, or guarantee, expressed or implied as to its accuracy. Prospective Buyer or Tenant should conduct an independent investigation and verification of all matters deemed to be material, including, but not limited to, statements of income and expenses. Consult your attorney, accountant, or other professional advisor. All Kidder Mathews designs are the sole property of Kidder Mathews. Branded materials and layouts are not authorized for use by any other firm or person.

