

3308 Hogum Bay Road NE

Suite E

Lacey, WA 98516



Property Details

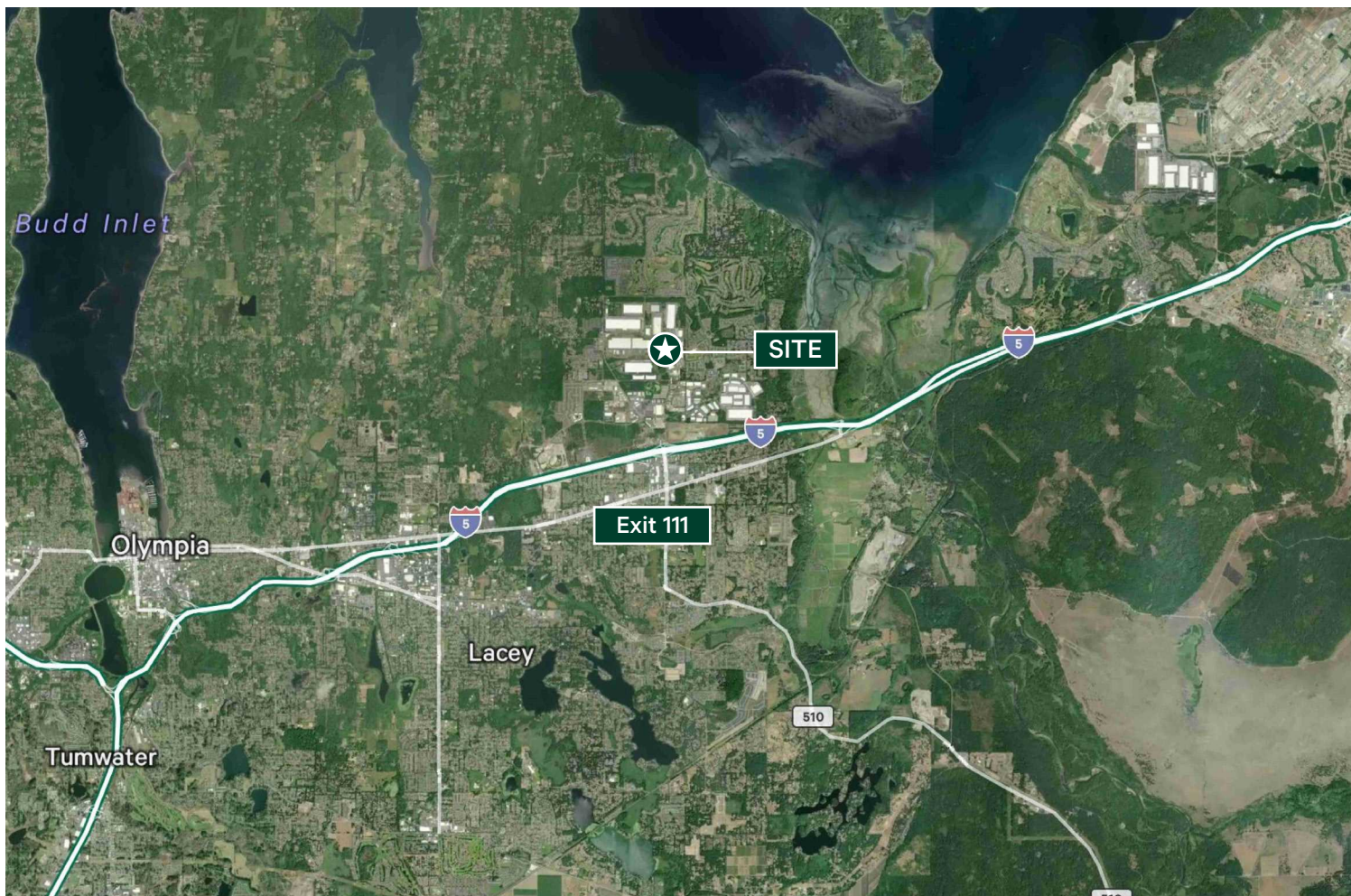
- + Available SF: 33,377 SF
- + Office SF: 4,621 SF
- + 5 dock-high doors
- + 1 GL door
- + 32' clear height
- + ESFR
- + 130' truck court with concrete apron
- + Zoned Light Industrial

3308 Hogum Bay Road NE, Suite E

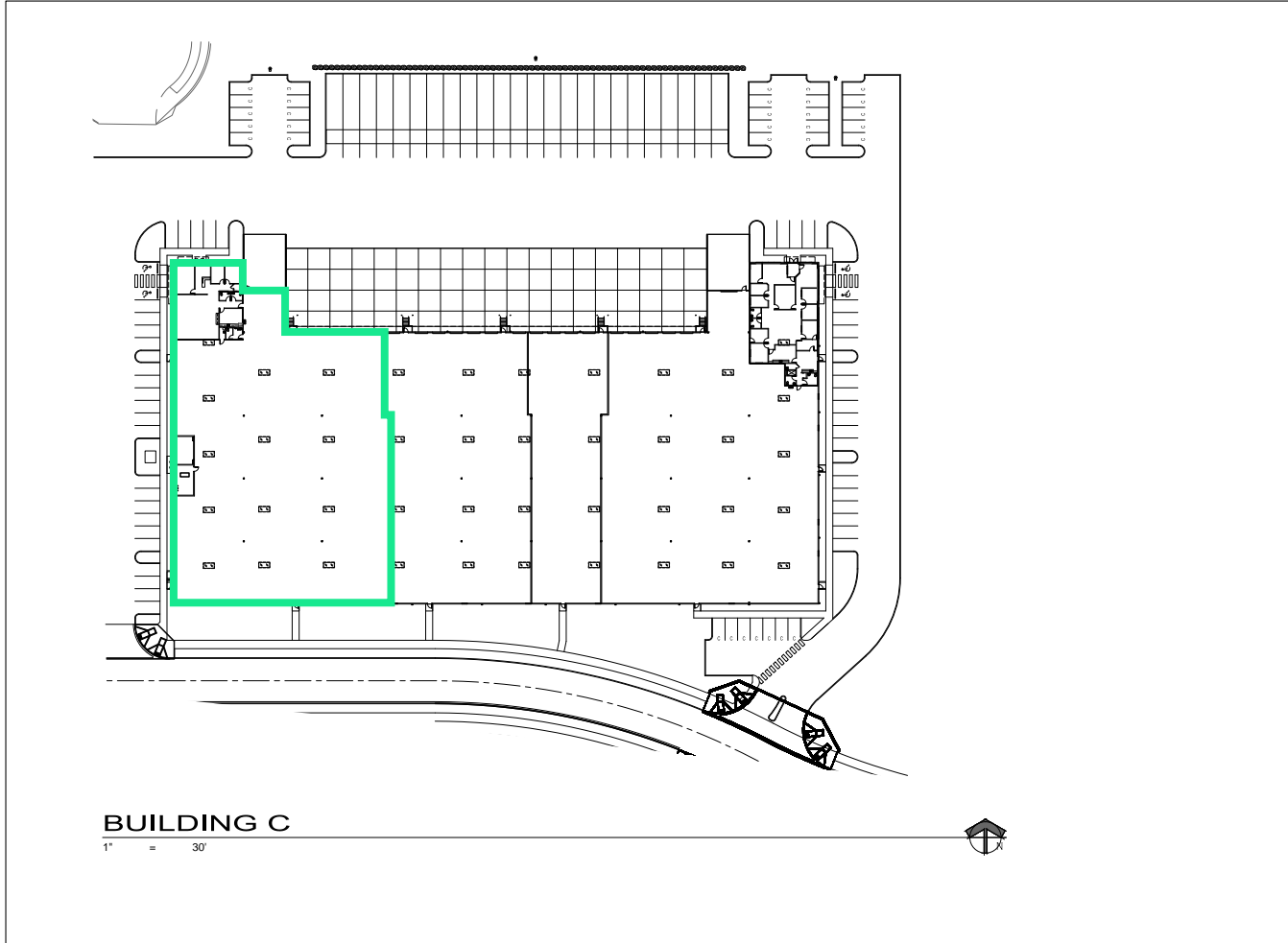
Lacey, WA 98516



Aerial Map



Floor Plan



Contact Us

Monte Decker

Senior Vice President
+1 253 596 0041
monte.decker@cbre.com

Chris Cowles

First Vice President
+1 253 596 0048
chris.cowles@cbre.com

CBRE, Inc.

710 Market Street
Tacoma, WA 98402

© 2026 CBRE, Inc. All rights reserved. This information has been obtained from sources believed reliable, but has not been verified for accuracy or completeness. You should conduct a careful, independent investigation of the property and verify all information. Any reliance on this information is solely at your own risk. CBRE and the CBRE logo are service marks of CBRE, Inc. All other marks displayed on this document are the property of their respective owners, and the use of such logos does not imply any affiliation with or endorsement of CBRE. Photos herein are the property of their respective owners. Use of these images without the express written consent of the owner is prohibited.