



5777 N
MEEKER AVE

BOISE, ID 83713

±54,000 SF OFFICE
FOR SUBLEASE

KARENA GILBERT
Vice President
+1 208 488 3164
karena.gilbert@cbre.com

SAMUEL LUNDY
Associate
+1 208 600 2684
samuel.lundy@cbre.com

CBRE

BUILDING OVERVIEW

Building Type	Office
Available SF	±54,000 SF
Lease Rate	\$24.00 FSEJ
Sublease Through	June 30, 2027

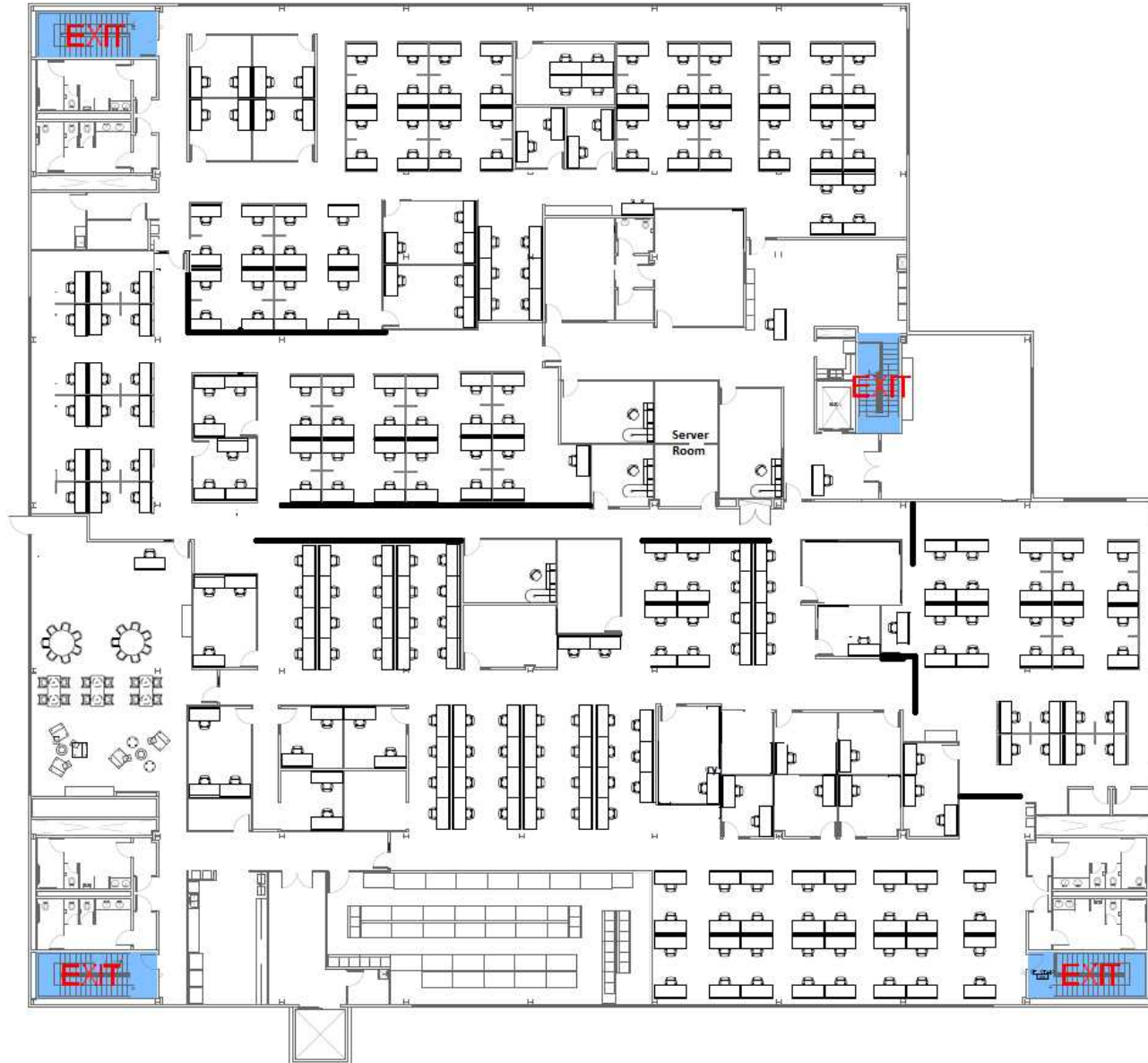
*Do not disturb tenants

HIGHLIGHTS

- Class A office building in the Boise Research Center, comprehensively rebuilt in 2013 with high-quality finishes throughout
- Useable floorplan with open office, individual offices, and conference rooms
- Private deck, 12-16 ft open ceiling heights, and abundant natural light
- Convenient access to Chinden Boulevard, Eagle Road, and I-84, making for an easy commute from across the Treasure Valley
- Ample surface parking with 339 onsite spaces
- Shared access to full gym located in basement



FLOORPLAN- 2nd Floor



AERIAL

HOBBLE CREEK PARK

WEST BOISE YMCA

CECIL D. ANDRUS
ELEMENTARY

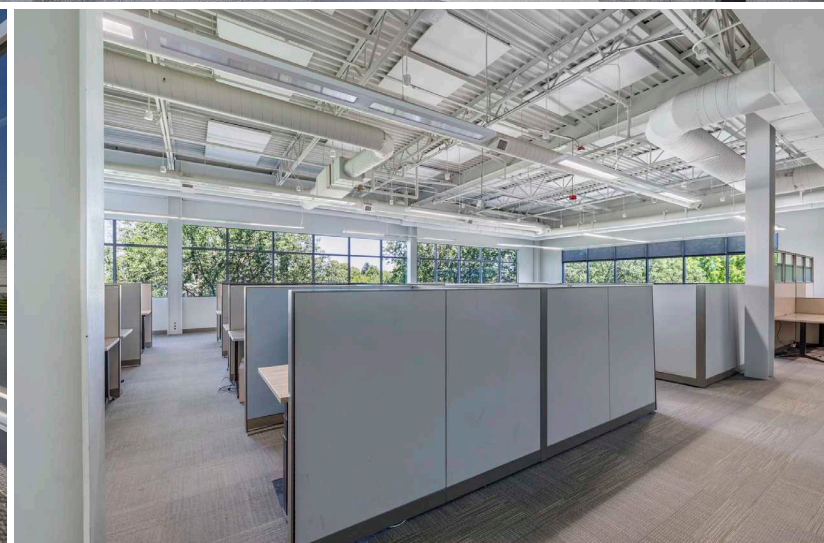
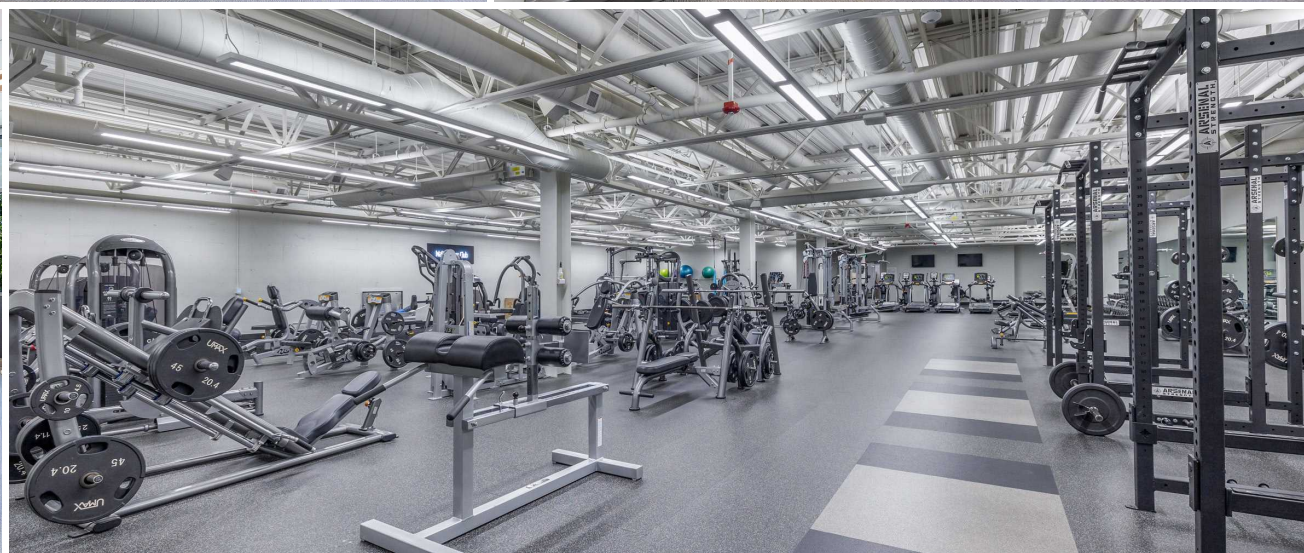
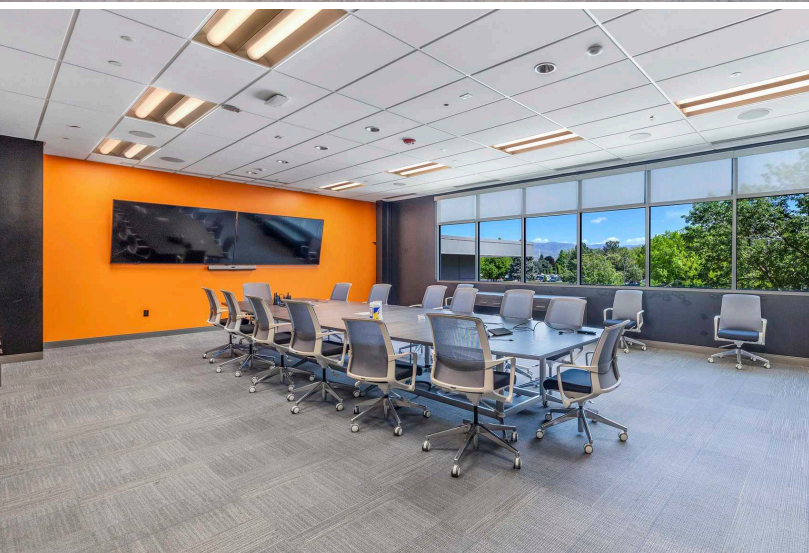
N. Discovery Way

5777 N. MEEKER

N. Ashcreek St.

N. Meeker Ave







5777 N MEEKER AVE

BOISE, ID 83713

±54,000 SF OFFICE
FOR SUBLEASE

KARENA GILBERT
Vice President
+1 208 488 3164
karena.gilbert@cbre.com

SAMUEL LUNDY
Associate
+1 208 600 2684
samuel.lundy@cbre.com



© 2026 CBRE, Inc. All rights reserved. This information has been obtained from sources believed reliable but has not been verified for accuracy or completeness. CBRE, Inc. makes no guarantee, representation or warranty and accepts no responsibility or liability as to the accuracy, completeness, or reliability of the information contained herein. You should conduct a careful, independent investigation of the property and verify all information. Any reliance on this information is solely at your own risk. CBRE and the CBRE logo are service marks of CBRE, Inc. All other marks displayed on this document are the property of their respective owners, and the use of such logos does not imply any affiliation with or endorsement of CBRE. Photos herein are the property of their respective owners. Use of these images without the express written consent of the owner is prohibited.