

6205 S 231st Street
Kent, WA

LEASED BY:



Kurv Kent III Kent



Available
Now

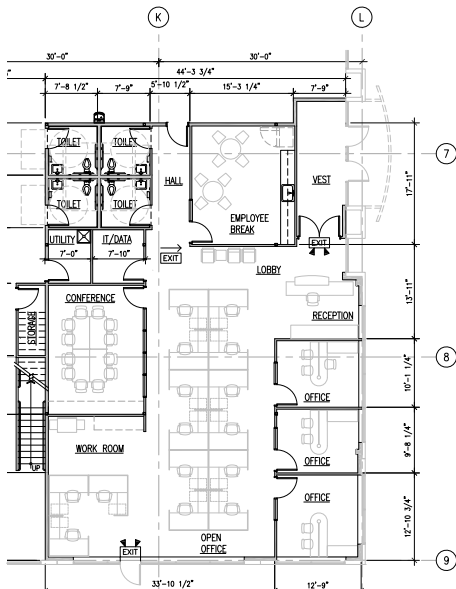
71,332 SF
Available Space

45,000 SF
Divisible

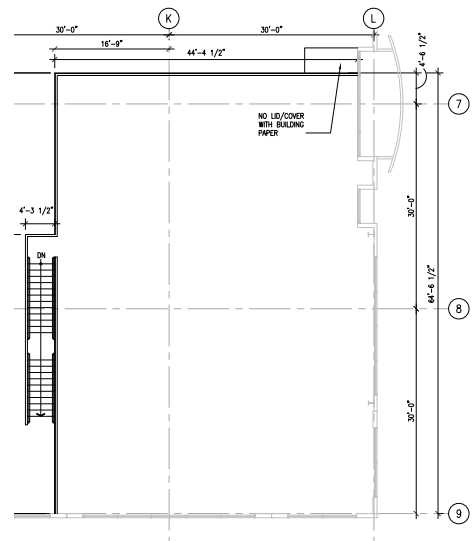
KURVINDUSTRIAL.COM



**FLOOR 1
OFFICE**
3,083 SF



**FLOOR 2
OFFICE**
2,999 SF



BUILDING OVERVIEW

Building Specs

ADDRESS

6205 S 231st Street
Kent, WA 98032

SLAB

6-inch thick

BUILDINGS

1

EXTERIOR DOCKS

13 (11 hydraulic levelers)

TOTAL SF

71,332

DRIVE-IN DOORS

1

WAREHOUSE OFFICE

3,083 SF

CLEAR HEIGHT

24'

MEZZANINE OFFICE

2,999 SF

SPRINKLERS

ESFR

1ST FLOOR OFFICE

380 SF (shipping office)

LIGHTING

LED

POWER

800 amps (ability to upgrade to 1,000+ amps)

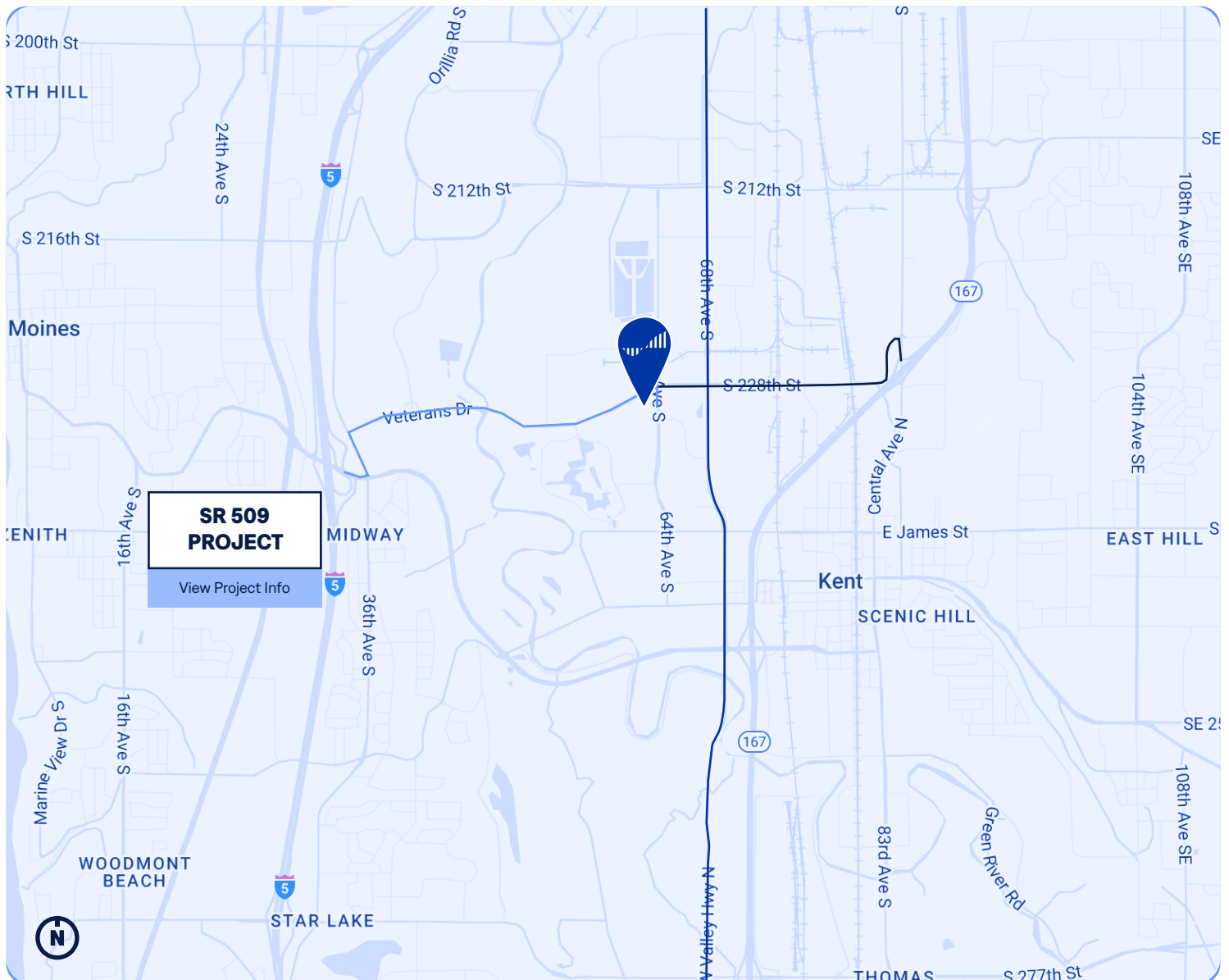
OTHER

New carpet & paint in office

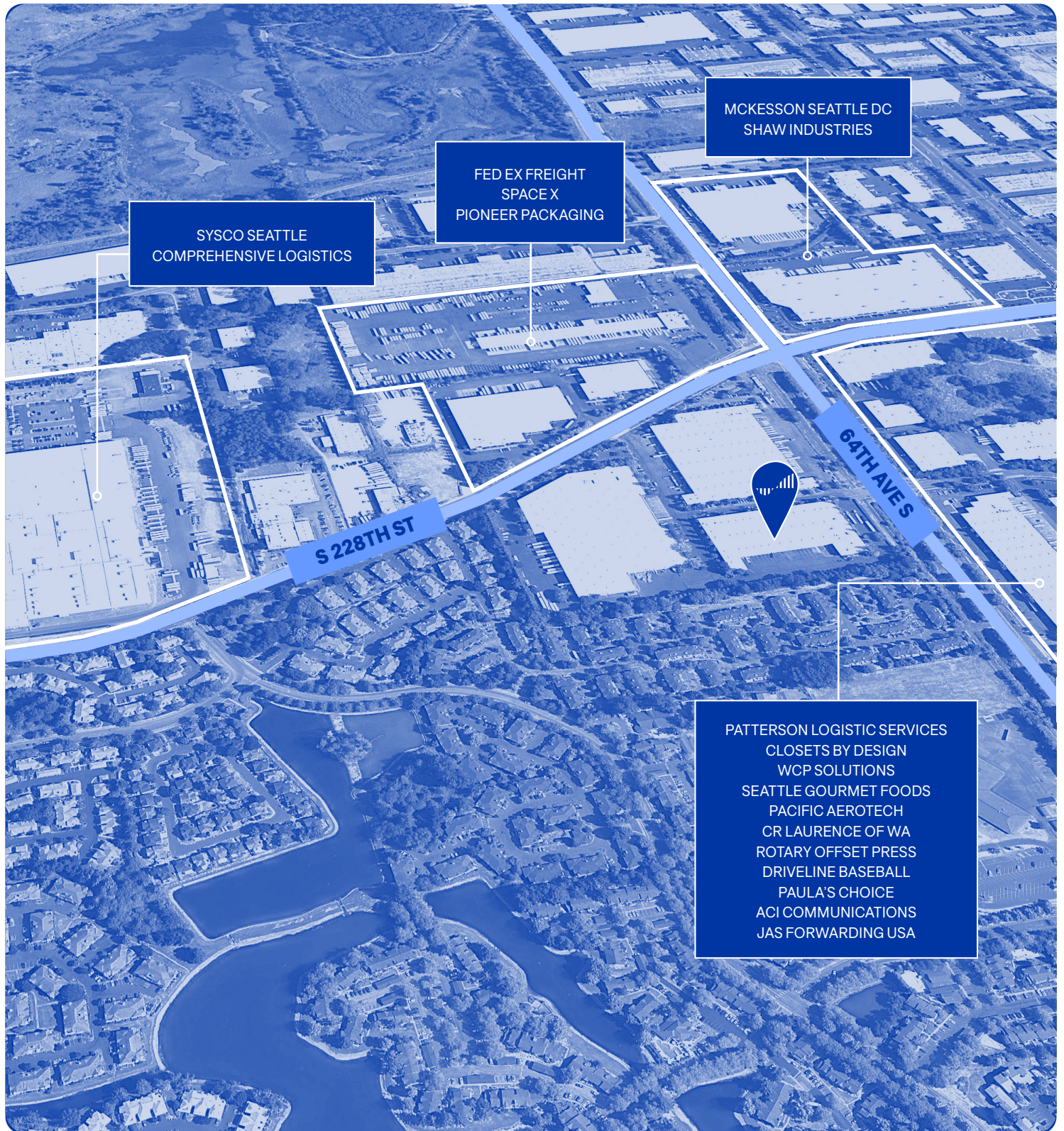
Strategic Logistics Location

State-of-the-art construction and move-in ready.

- Boasts immediate access to West Valley Hwy, SR-167, and I-5
- 32 minutes from the Port of Seattle (25 minutes from Seattle CBD)
- 26 minutes from the Port of Tacoma
- 14 minutes from Sea-Tac International Airport



Perfectly located in Kent



Chicago • Dallas • Los Angeles • Miami • New Jersey • Seattle



76M+ SF

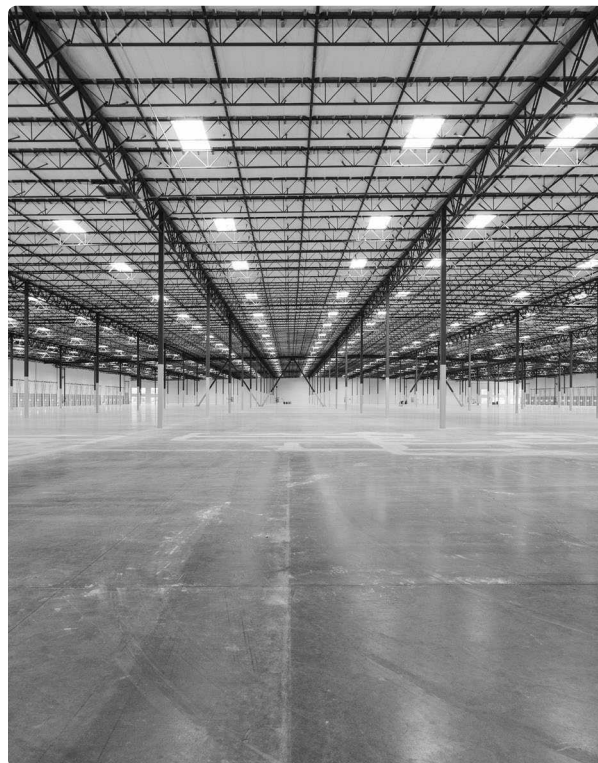
Acquired & Developed
since 2000

Kurv Industrial is a vertically integrated industrial real estate investment and operating platform. The firm acquires, develops, and operates institutional-quality assets in the high-barrier, supply-constrained markets of Chicago, Dallas, Los Angeles, Miami, New Jersey, and Seattle.

Grounded in a tradition of excellence and driven by a forward-looking vision, Kurv leverages local market insight, operational rigor, and disciplined execution to create value for investors, partners, and communities. Since its inception in 2000, Kurv has successfully acquired and developed over 76 million square feet of industrial facilities.

Our Commitment to Sustainability

As stewards of sustainability, resilience, and regeneration, our vision is to deliver exceptional value for our investors, employees, tenants, and communities through superior ESG performance.



TERMS

Available on a new lease direct from the landlord.

LEASING INFORMATION

Please contact listing agents below.

Arie Salomon
asalomon@nai-psp.com
O: 425.586.5636

Jeff Forsberg
jforsberg@nai-psp.com
O: 425.586.5610

Connor Powell
cpowell@nai-psp.com
O: 425.586.5642

Luke Jarvis
lj Jarvis@nai-psp.com
O: 425.586.5609

