

FOR LEASE

OLYMPIA OFFICE WITH PARKING

1235 4TH AVENUE E | OLYMPIA, WA. 98506



LEASE RATE **\$20.00/SF** includes all utilities

This 1,986 square foot lower-level office space offers ADA access and lots of light. The space includes seven offices, a conference room, reception area, kitchen, copy room, and file room, along with a shared restroom. The property also includes seven parking spaces plus street parking on 4th.



Debbie Draper-Aikins

360 791 3869

debbie.draper@cbolympia.com



**COLDWELL BANKER
COMMERCIAL**
EVERGREEN OLYMPIC
REALTY, INC.

FOR LEASE OLYMPIA OFFICE

1235 4TH AVENUE E | OLYMPIA, WA. 98506



Debbie Draper-Aikins

360 791 3869

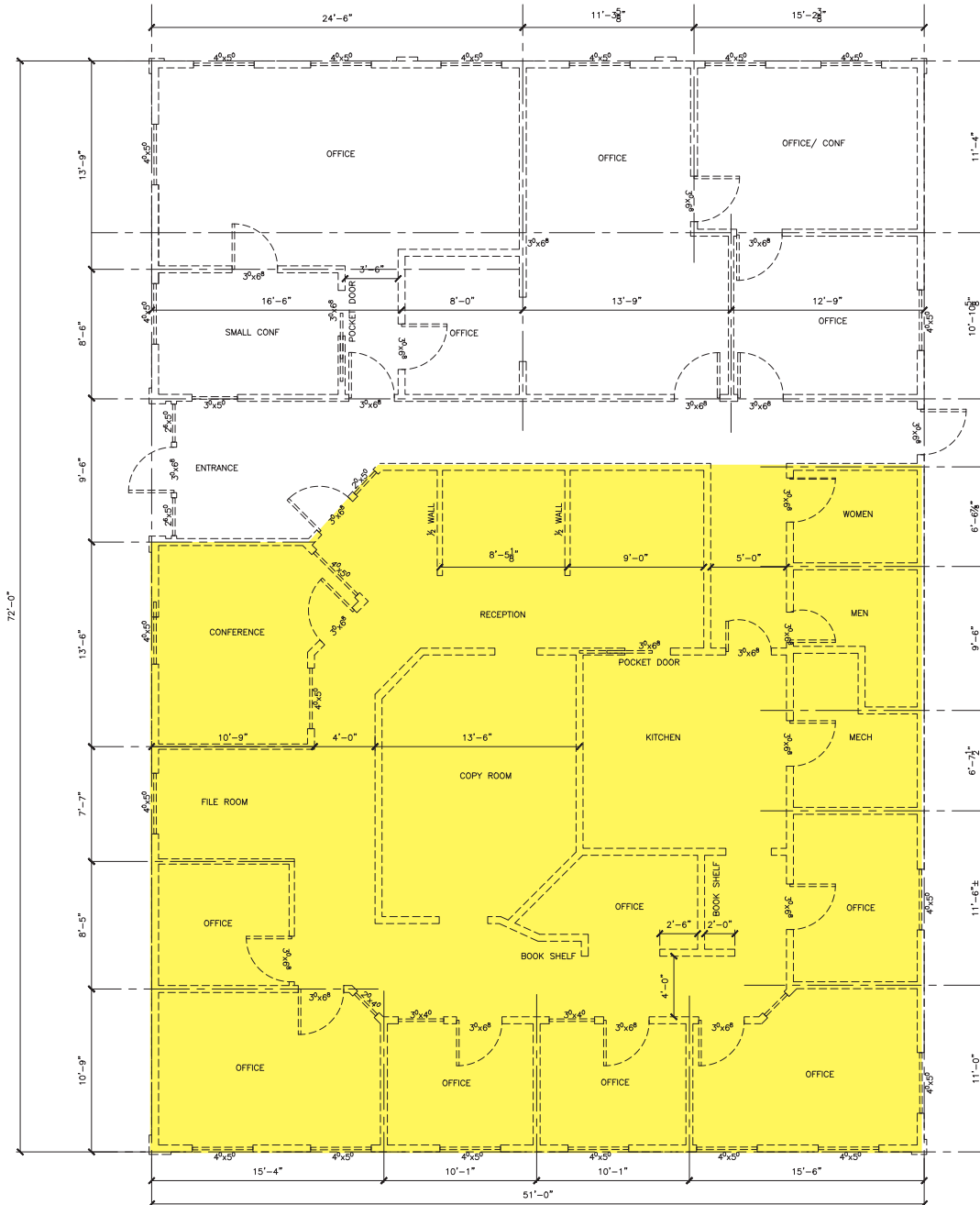
debbie.draper@cbolympia.com



**COLDWELL BANKER
COMMERCIAL**
EVERGREEN OLYMPIC
REALTY, INC.

FOR LEASE OLYMPIA OFFICE

1235 4TH AVENUE E | OLYMPIA, WA. 98506



Debbie Draper-Aikins

360 791 3869

debbie.draper@cbolympia.com



**COLDWELL BANKER
COMMERCIAL**
EVERGREEN OLYMPIC
REALTY, INC.