



6801 185th Ave. NE
REDMOND, WASHINGTON



TYLER SLONE
425.274.4281
slone@broderickgroup.com

PAUL JERUE
425.646.5223
jerue@broderickgroup.com

ERIC MEUSSNER
425.274.4282
meussner@broderickgroup.com

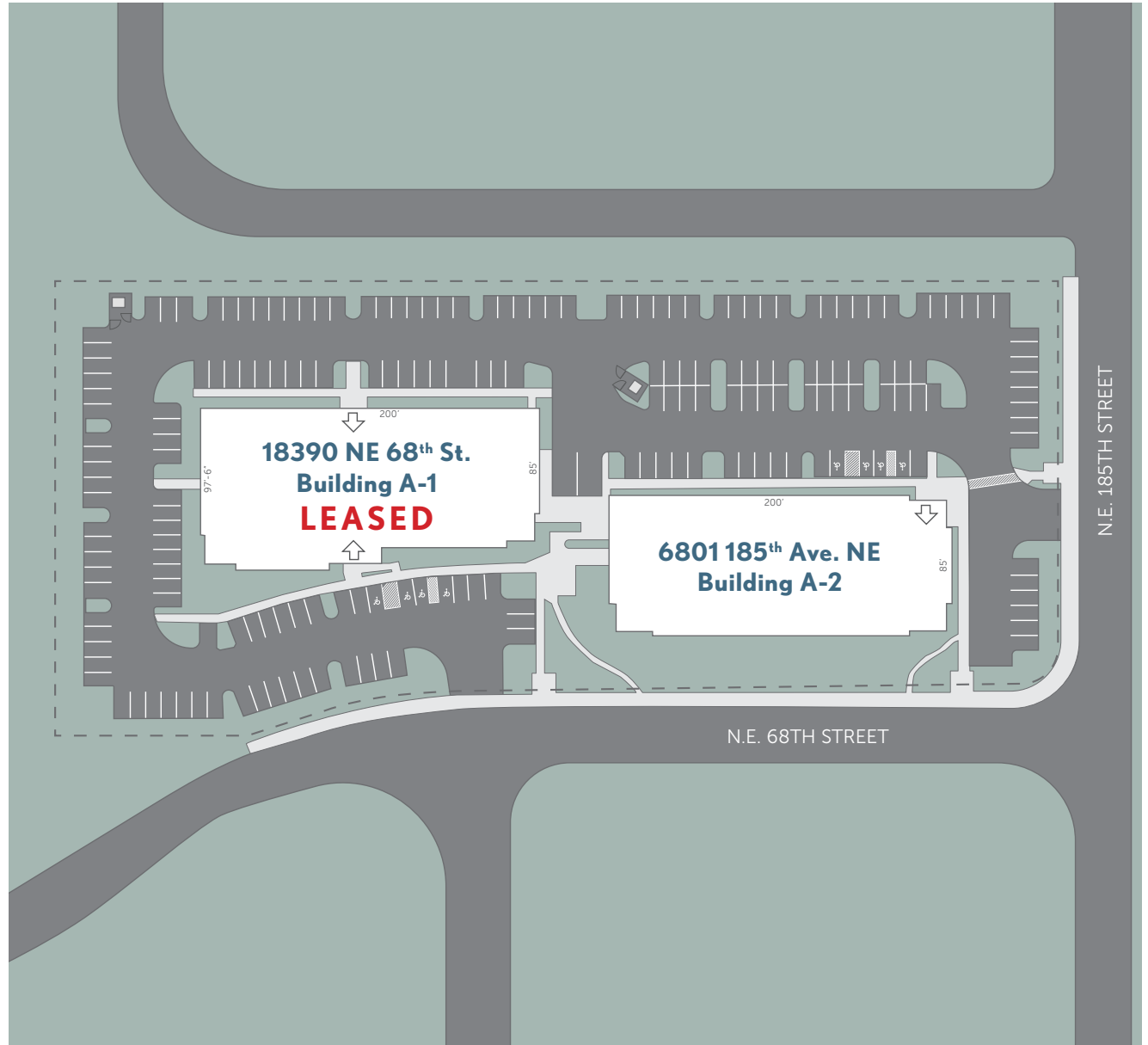
The information contained herein has been given to us by the owner or sources that we deem reliable. We have no reason to doubt its accuracy, but we do not guarantee it. Prospective tenants should carefully verify all information contained herein.



SITE PLAN

CAMPUS FEATURES:

- High image finishes
- Extensive glass line
- Conveniently located close to the future light rail near Downtown Redmond
- Easy access to SR-520



TYLER SLONE
425.274.4281
slone@broderickgroup.com

PAUL JERUE
425.646.5223
jerue@broderickgroup.com

ERIC MEUSSNER
425.274.4282
meussner@broderickgroup.com

The information contained herein has been given to us by the owner or sources that we deem reliable. We have no reason to doubt its accuracy, but we do not guarantee it. Prospective tenants should carefully verify all information contained herein.

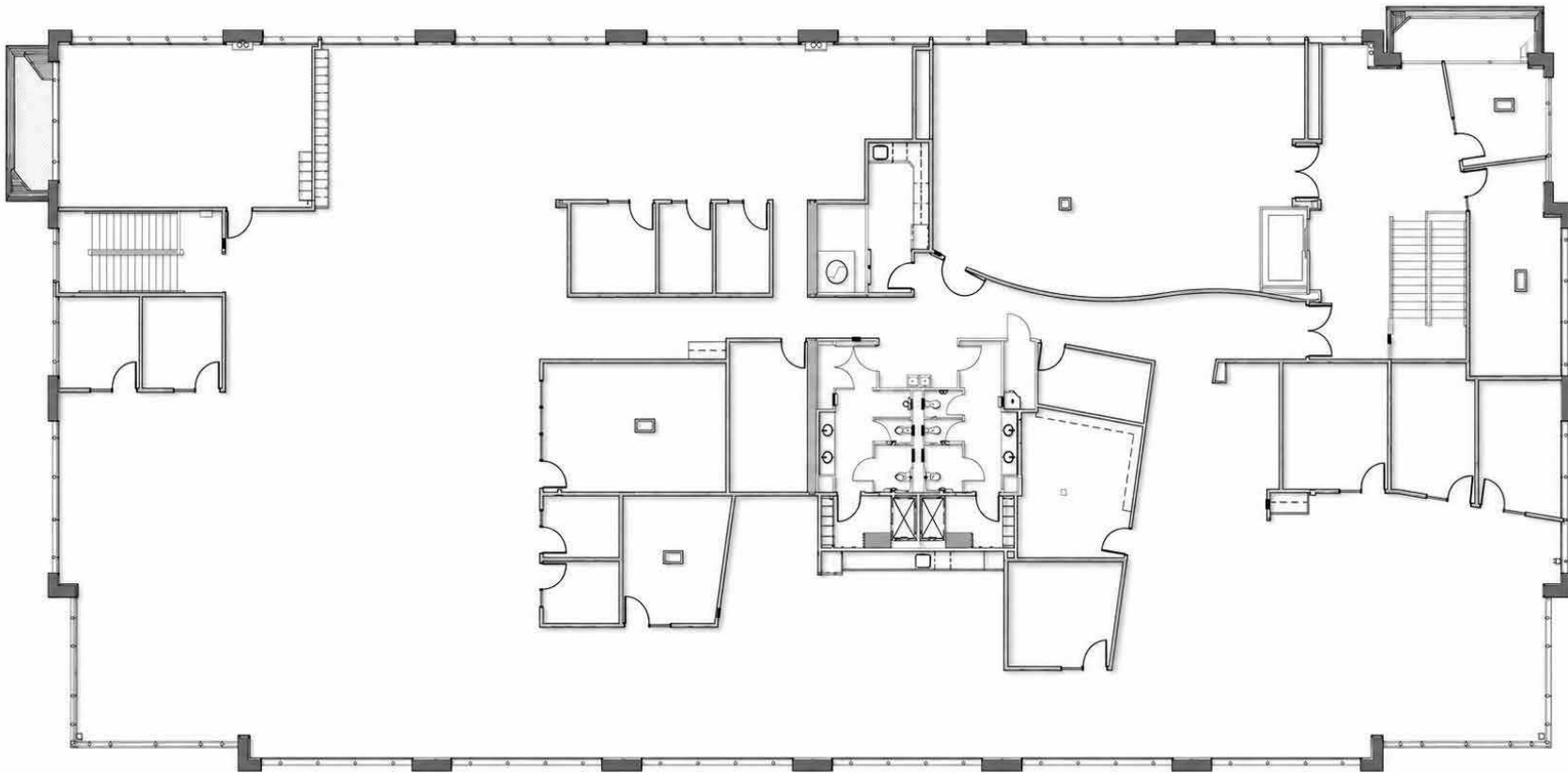


BUILDING A-2

6801 185th Ave. NE

SECOND FLOOR: 16,681 RSF

- Available Now

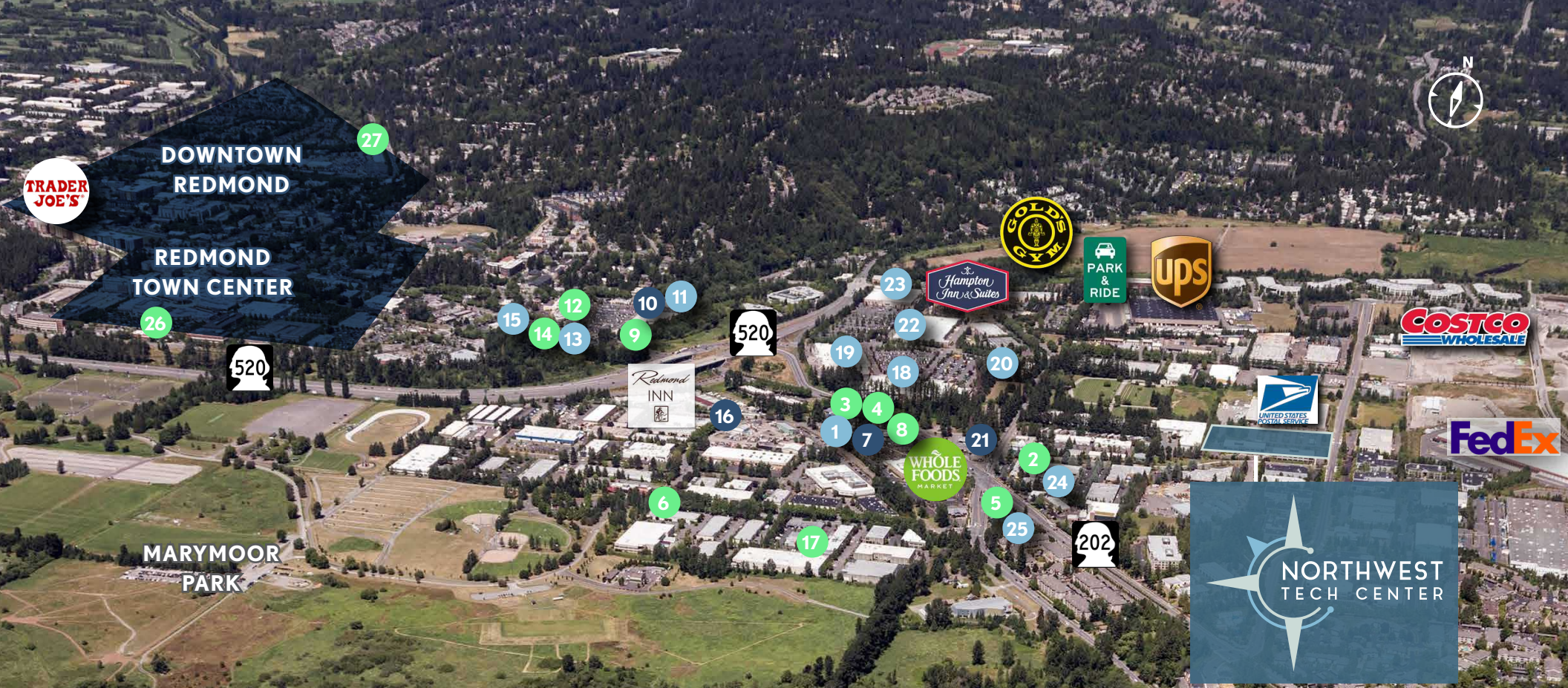


TYLER SLONE
425.274.4281
slone@broderickgroup.com

PAUL JERUE
425.646.5223
jerue@broderickgroup.com

ERIC MEUSSNER
425.274.4282
meussner@broderickgroup.com

The information contained herein has been given to us by the owner or sources that we deem reliable. We have no reason to doubt its accuracy, but we do not guarantee it. Prospective tenants should carefully verify all information contained herein.



AMENITIES

- COFFEE
- SERVICE
- FOOD OPTION

- | | | | |
|---|---|--|---|
| <ul style="list-style-type: none"> 1. Sammamish Cleaners 2. Pomegranate Bistro 3. Jimmy John's 4. Chipotle 5. Subway 6. Postdoc Brewing 7. Peet's Coffee & Tea | <ul style="list-style-type: none"> 8. Asiana Bistro 9. Panera Bread 10. Starbucks 11. Rite-Aid 12. Agave Cocina 13. Baskin Robbins 14. Fatburger | <ul style="list-style-type: none"> 15. Bank of America 16. Blazin Bagels 17. Mac & Jack's Brewery 18. Home Depot 19. Fred Meyer 20. Discount Tire 21. Mercurys Coffee Co. | <ul style="list-style-type: none"> 22. Target 23. Kohl's 24. ZenRock Fitness 25. Redmond Kindercare 26. BJ's Restaurant & Brewhouse 27. Typhoon |
|---|---|--|---|





6801 185th Ave. NE
REDMOND, WASHINGTON



TYLER SLONE
425.274.4281
slone@broderickgroup.com

PAUL JERUE
425.646.5223
jerue@broderickgroup.com

ERIC MEUSSNER
425.274.4282
meussner@broderickgroup.com

The information contained herein has been given to us by the owner or sources that we deem reliable. We have no reason to doubt its accuracy, but we do not guarantee it. Prospective tenants should carefully verify all information contained herein.