

18911 & 19015 NORTH CREEK PARKWAY
BOTHELL, WASHINGTON

BRODERICK
• GROUP •



PLAZA @ NORTH CREEK

3,134 – 86,887 SF AVAILABLE



PLAZA @ NORTH CREEK

PROPERTY HIGHLIGHTS



CLASS A OFFICE / TECH
CAMPUS WITH SECURITY /
CARD KEY ACCESS



NEW TENANT AMENITY EXERCISE
FACILITY, SHOWERS, LOCKERS, AND
BIKE STORAGE



RESTAURANTS, DELICATESSEN,
JOGGING & WALKING TRAILS,
& NORTSHORE YMCA WITHIN
WALKING DISTANCE



3-4/1,000 SF PARKING RATIO;
EXCELLENT ACCESS & FREEWAY
VISIBILITY (I-405 & SR-522) WITH
ELECTRIC VEHICLE CHARGING STATIONS



HOTELS WITHIN WALKING
DISTANCE (WYNDHAM GARDEN
HOTEL & RESIDENCE INN)



FIBER SERVICES ARE PROVIDED BY
FRONTIER FIOS. CABLE PROVIDED
BY COMCAST. ADDITIONAL TELECOM
SERVICES PROVIDED BY VERIZON,
AT&T & ACCESS TELEPHONE
SOLUTIONS, INC.

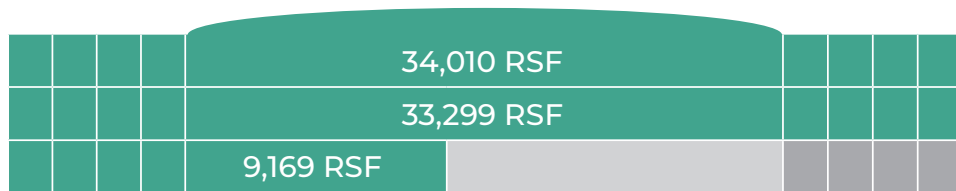
PLAZA @ NORTH CREEK

AVAILABLE SPACE

SPACE	SIZE	AVAILABLE	NOTES
EAST BUILDING • 18911 NORTH CREEK PARKWAY, BOTHELL, WA			
▶ Suite 200	10,409 RSF	NOW	
NORTH BUILDING • 19015 NORTH CREEK PARKWAY, BOTHELL, WA			
Suite 107	3,134 RSF	NOW	
Suite 109	6,035 RSF	July 1, 2026	
▶ Suite 200	33,299 RSF	NOW	
▶ Suite 300	34,010 RSF	NOW	Partially Furnished
FLOORS 1-3 CAN BE COMBINED FOR A TOTAL OF 76,478 RSF			
TOTAL SQUARE FOOTAGE AVAILABLE: 86,887 RSF			

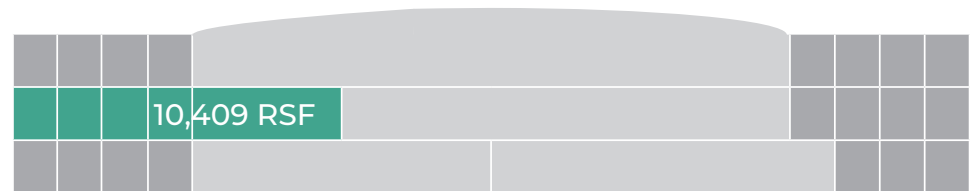
PLAZA @ NORTH CREEK

NORTH BUILDING



76,478 RSF TOTAL AVAILABLE

EAST BUILDING



10,409 RSF TOTAL AVAILABLE

PLAZA @ NORTH CREEK

NORTH BUILDING

19015 NORTH CREEK PKWY
BOTHELL, WA

TYLER SLONE

425.274.4281

slone@broderickgroup.com

PAUL JERUE

425.646.5223

jerue@broderickgroup.com

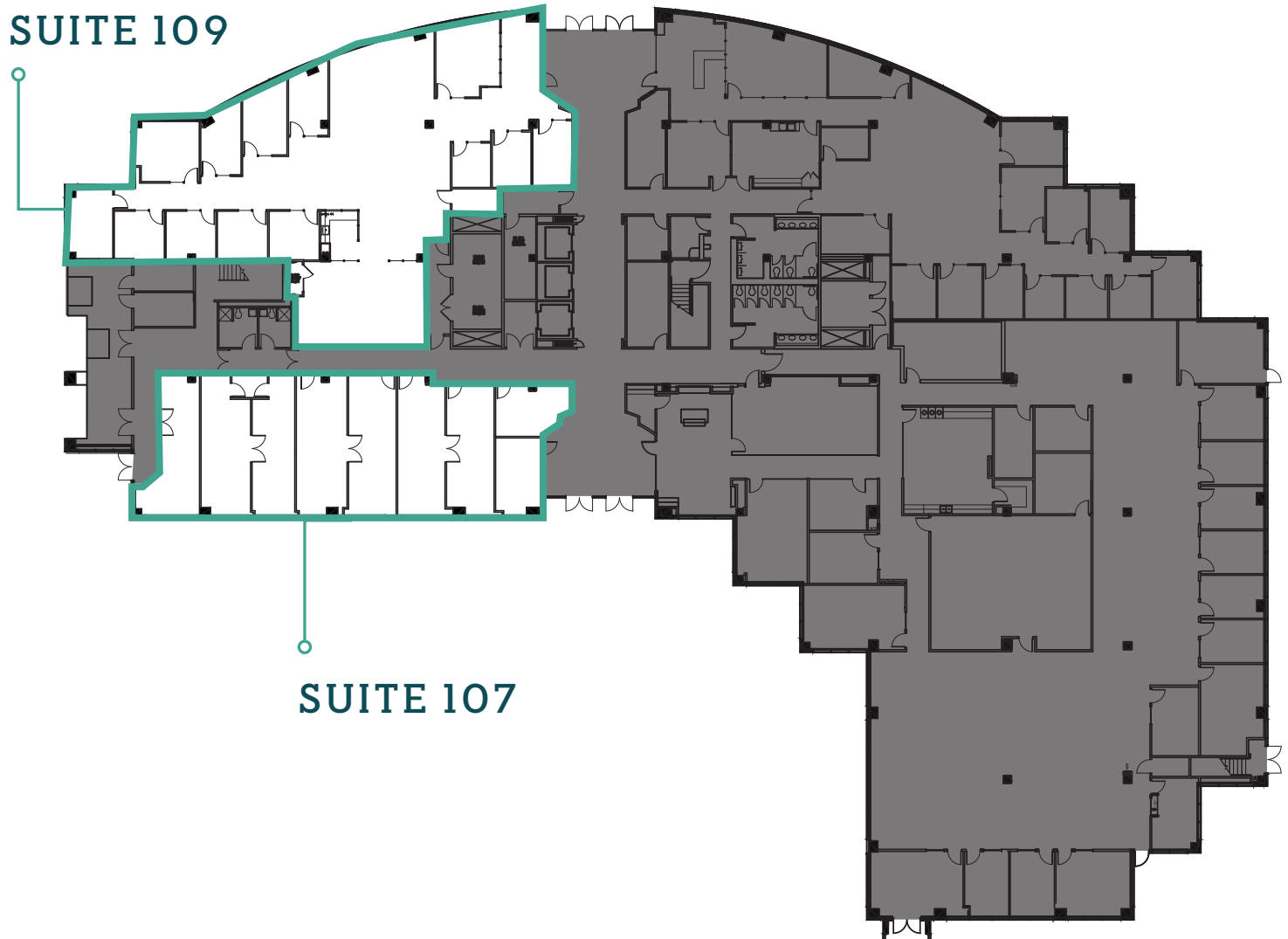
BRODERICK
• GROUP •

FLOOR PLAN

SUITE 107 | 3,134 RSF | AVAILABLE NOW

SUITE 109 | 6,035 RSF | AVAILABLE JULY 1, 2026

SUITE 109



SUITE 107



PLAZA @ NORTH CREEK

NORTH BUILDING

19015 NORTH CREEK PKWY
BOTHELL, WA



TYLER SLONE

425.274.4281

slone@broderickgroup.com

PAUL JERUE

425.646.5223

jerue@broderickgroup.com

BRODERICK
• GROUP •



FLOOR PLAN

SUITE 200 | 33,299 RSF | AVAILABLE NOW

 VIRTUAL TOUR



PLAZA @ NORTH CREEK

NORTH BUILDING

19015 NORTH CREEK PKWY
BOTHELL, WA

TYLER SLONE

425.274.4281

slone@broderickgroup.com

PAUL JERUE

425.646.5223

jerue@broderickgroup.com

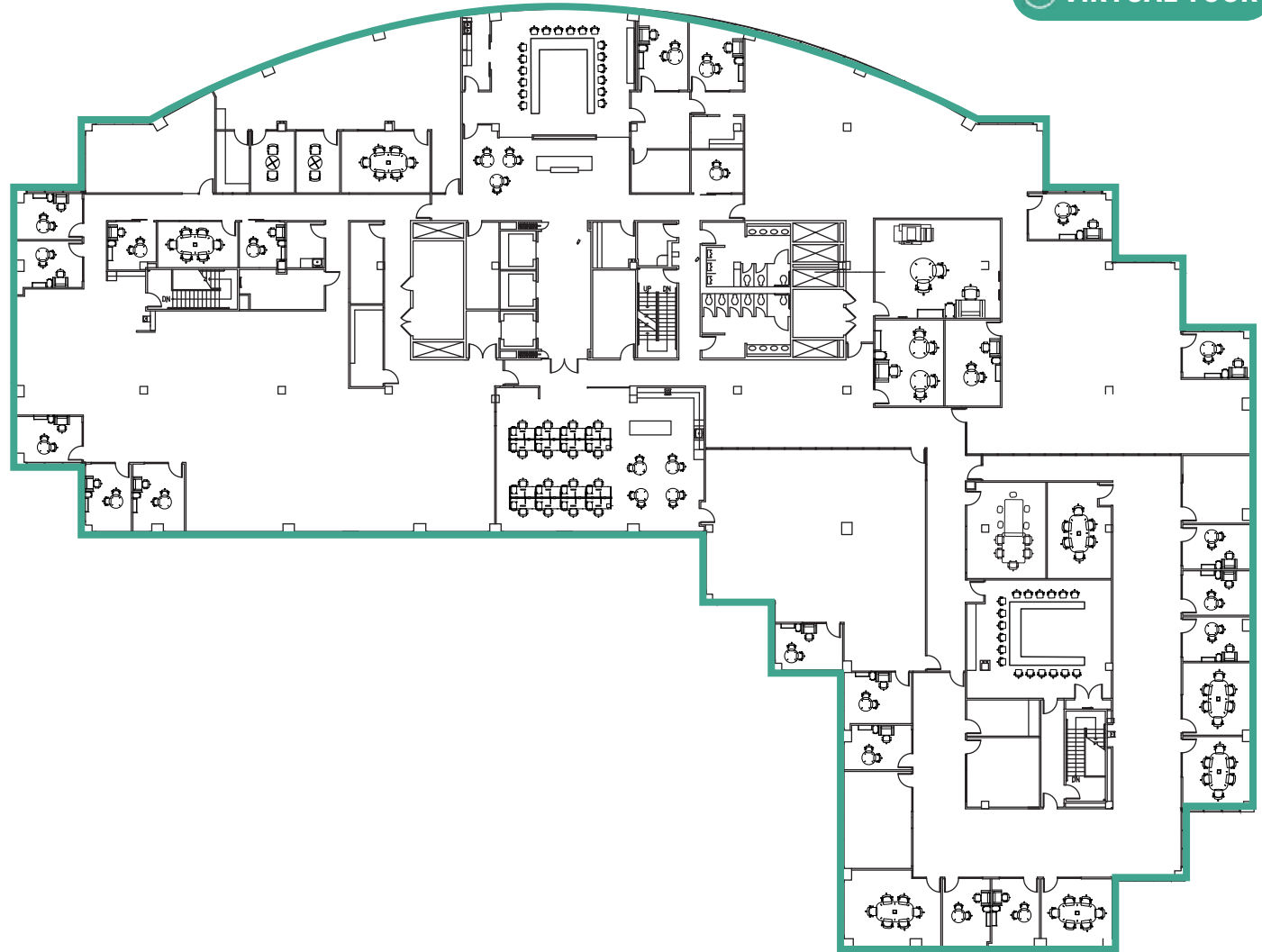
BRODERICK
• GROUP •



FLOOR PLAN

SUITE 300 | 34,010 RSF | AVAILABLE NOW
PARTIALLY FURNISHED

[▶ VIRTUAL TOUR](#)



PLAZA @ NORTH CREEK

EAST BUILDING

18911 NORTH CREEK PKWY
BOTHELL, WA

TYLER SLONE

425.274.4281

slone@broderickgroup.com

PAUL JERUE

425.646.5223

jerue@broderickgroup.com

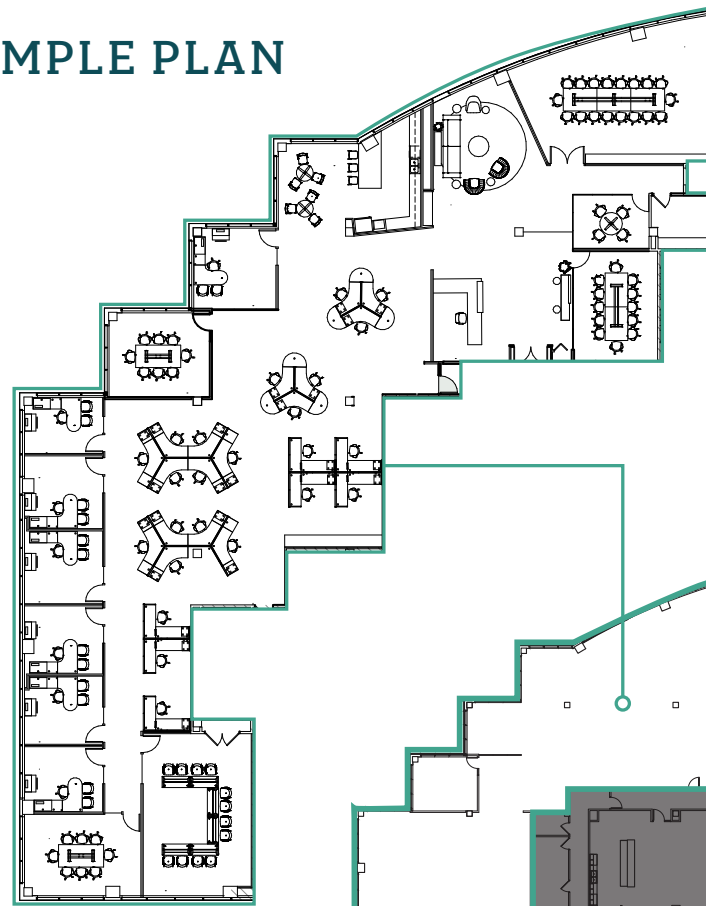
BRODERICK
• GROUP •

FLOOR PLAN

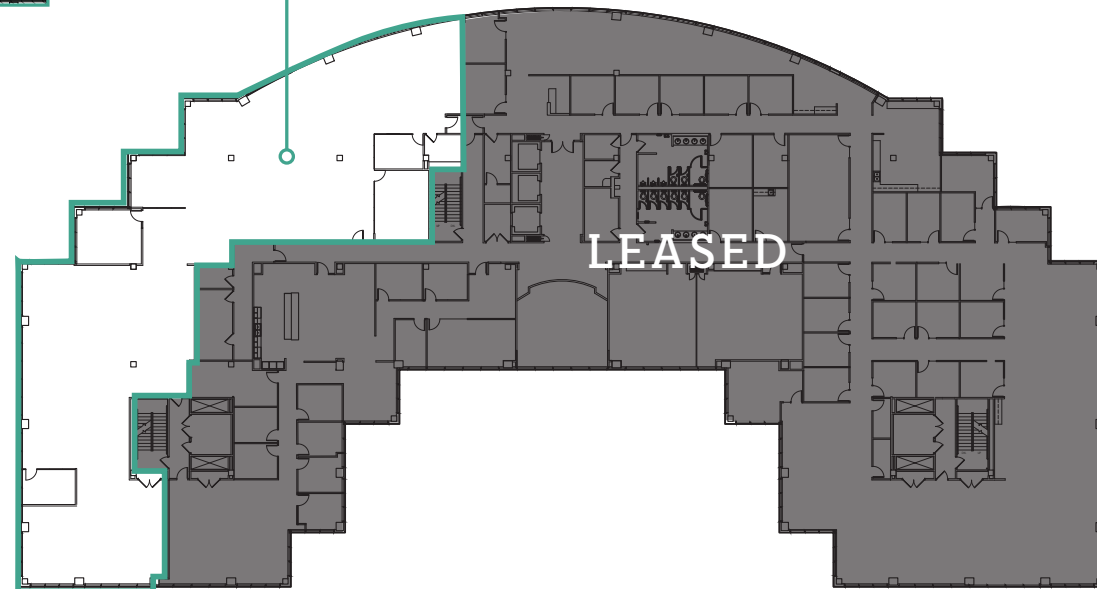
SUITE 200 | 10,409 RSF | AVAILABLE NOW

[▶ VIRTUAL TOUR](#)

SAMPLE PLAN



AS-BUILT



LEASED

