

# 7800 S 206TH ST

Kent, WA 98032

S 206TH ST



FOR LEASE | AVAILABLE NOW

**±15,000 SF Covered Storage on 4.52 Acres**



John Broom  
+1 206 877 2750  
john.broom@kbcadvisors.com

Matt Wood, SIOR  
+1 206 595 6814  
matt.wood@kbcadvisors.com

KBC Advisors | Seattle  
5628 Airport Way, Suite 238  
Seattle, WA 98108



# SITE DETAILS



**±15,000 SF**  
Covered Storage



**785 SF**  
Shop



**19'-22'**  
Clear Height



**FENCED**  
& Secured



**HEAVY**  
Power  
(3-phase 1,200 amps)



**4,645 SF**  
Office



**4.52**  
Acre Site



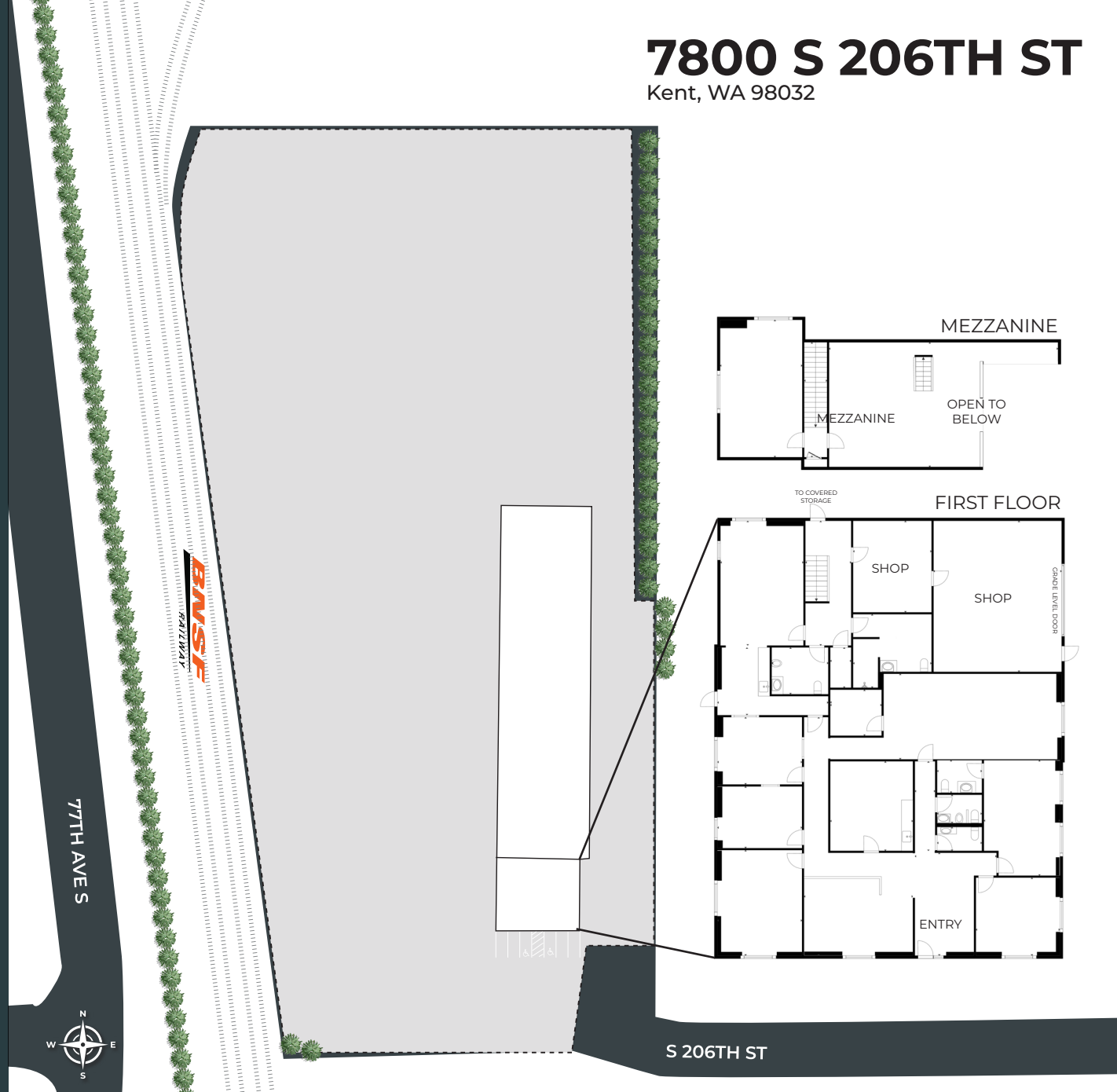
**PAVED**  
Yard



**LIGHTING**  
In Place



**I3**  
Zoning



# 7800 S 206TH ST

Kent, WA 98032

John Broom  
+1 206 877 2750  
john.broom@kbcadvisors.com

Matt Wood, SIOR  
+1 206 595 6814  
matt.wood@kbcadvisors.com

KBC Advisors | Seattle  
5628 Airport Way, Suite 238  
Seattle, WA 98108



# 7800 S 206TH ST

Kent, WA 98032

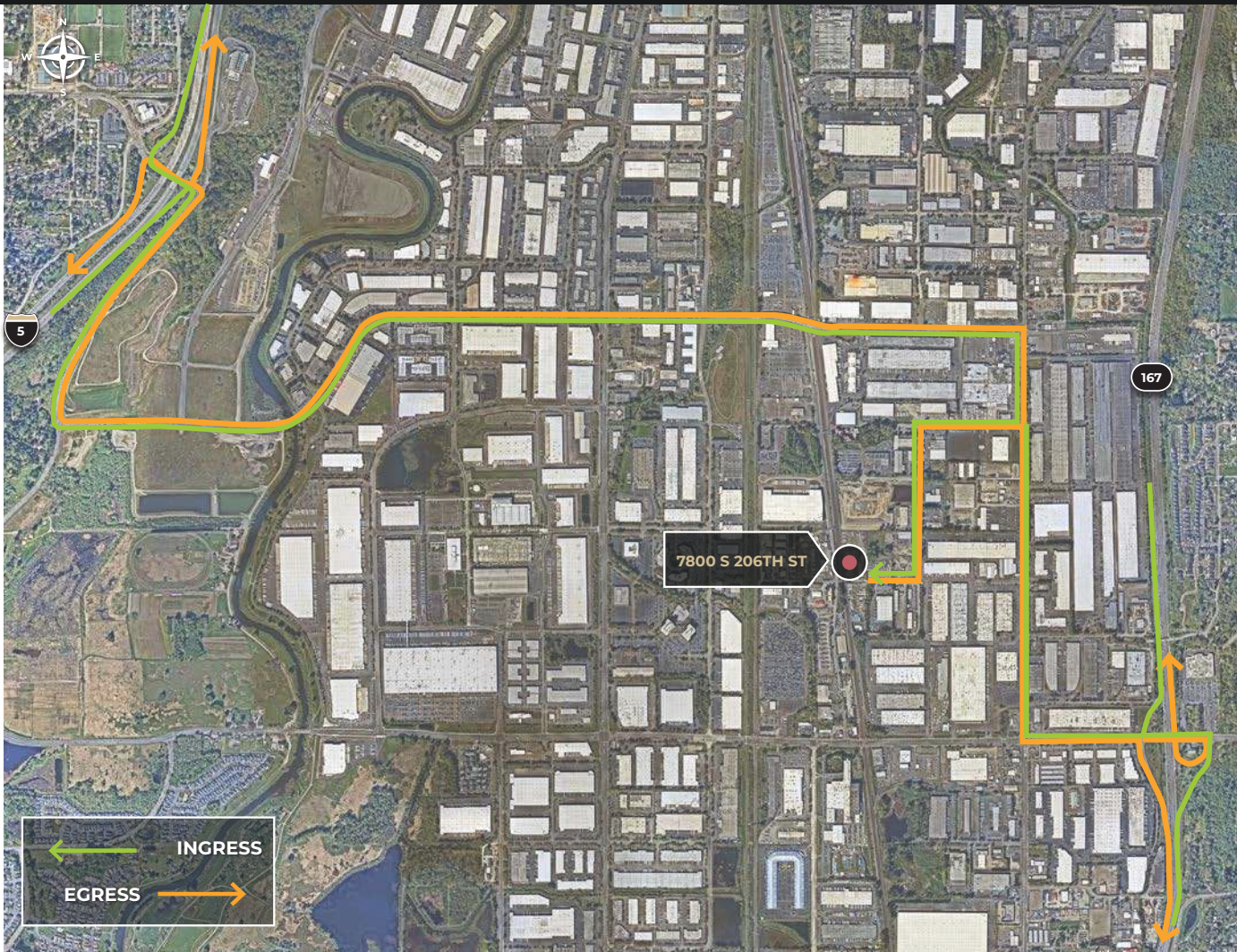
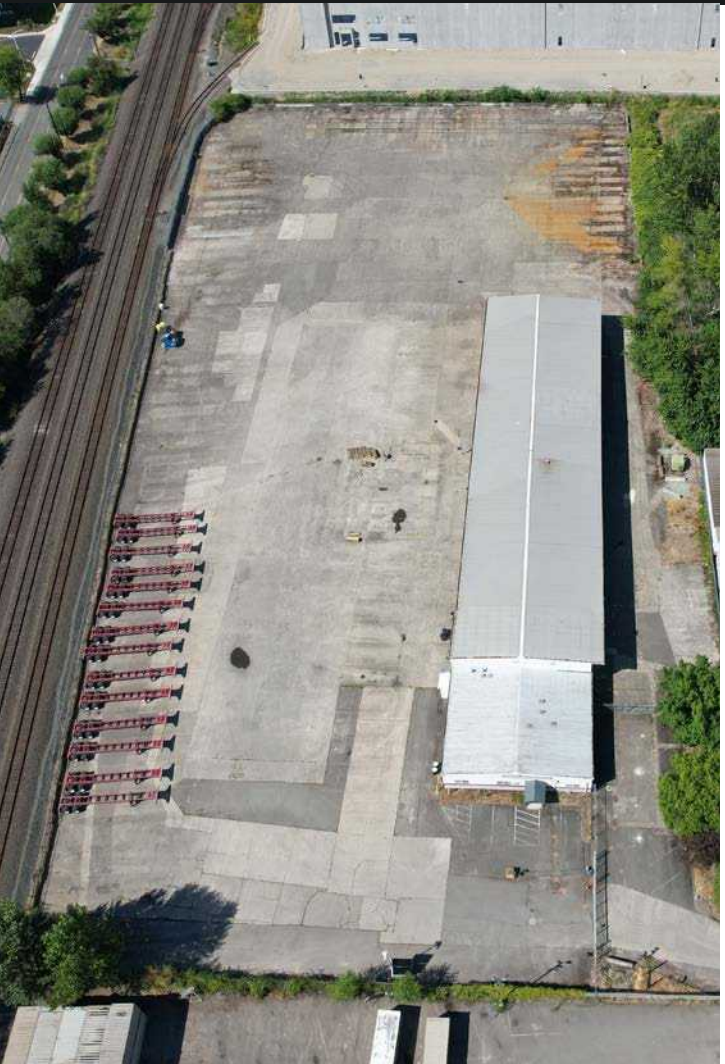


**John Broom**  
+1 206 877 2750  
john.broom@kbcadvisors.com

**Matt Wood, SIOR**  
+1 206 595 6814  
matt.wood@kbcadvisors.com

**KBC Advisors | Seattle**  
5628 Airport Way, Suite 238  
Seattle, WA 98108





John Broom  
+1 206 877 2750  
john.broom@kbcadvisors.com

Matt Wood, SIOR  
+1 206 595 6814  
matt.wood@kbcadvisors.com

KBC Advisors | Seattle  
5628 Airport Way, Suite 238  
Seattle, WA 98108



© 2026 KBC ADVISORS This information has been obtained from sources believed to be reliable but has not been verified for accuracy or completeness, and KBC Advisors disclaims any guarantees, warranties or representations, express or implied, as to the completeness or accuracy as to the information contained herein. You should conduct a careful, independent investigation of the property and verify all information. Any reliance on this information is solely at your own risk. The KBC ADVISORS logo is a service mark of KBC ADVISORS. All other marks displayed on this document are the property of their respective owners. Photos herein are the property of their respective owners. Use of these images without the express written consent of the owners is prohibited.