

DES MOINES CREEK

Business Park West

405,680 SF

www.DesMoinesCreekWest.com

Under Construction



FOR LEASE

1800 S 216th St
Des Moines, WA



NEWMARK

km Kidder Mathews

PANATTONI

Port of Seattle

THAD MALLORY, SIOR thad.mallory@nmrk.com | 425-362-1410

CHRIS CORR, SIOR chris.corr@kidder.com | 206-248-7324

TAYLOR HOFF, SIOR taylor.hoff@nmrk.com | 425-362-1388

SITE PLAN

Building Details



ADDRESS

1800 S 216th St, Des Moines, WA



TOTAL BUILDING SF

405,680 SF



OFFICE SF

BTS



CLEAR HEIGHT

40'



LOADING

56 Dock High Doors
2 Grade Level Doors



PARKING

313 Auto Stalls
68 Trailer Stalls

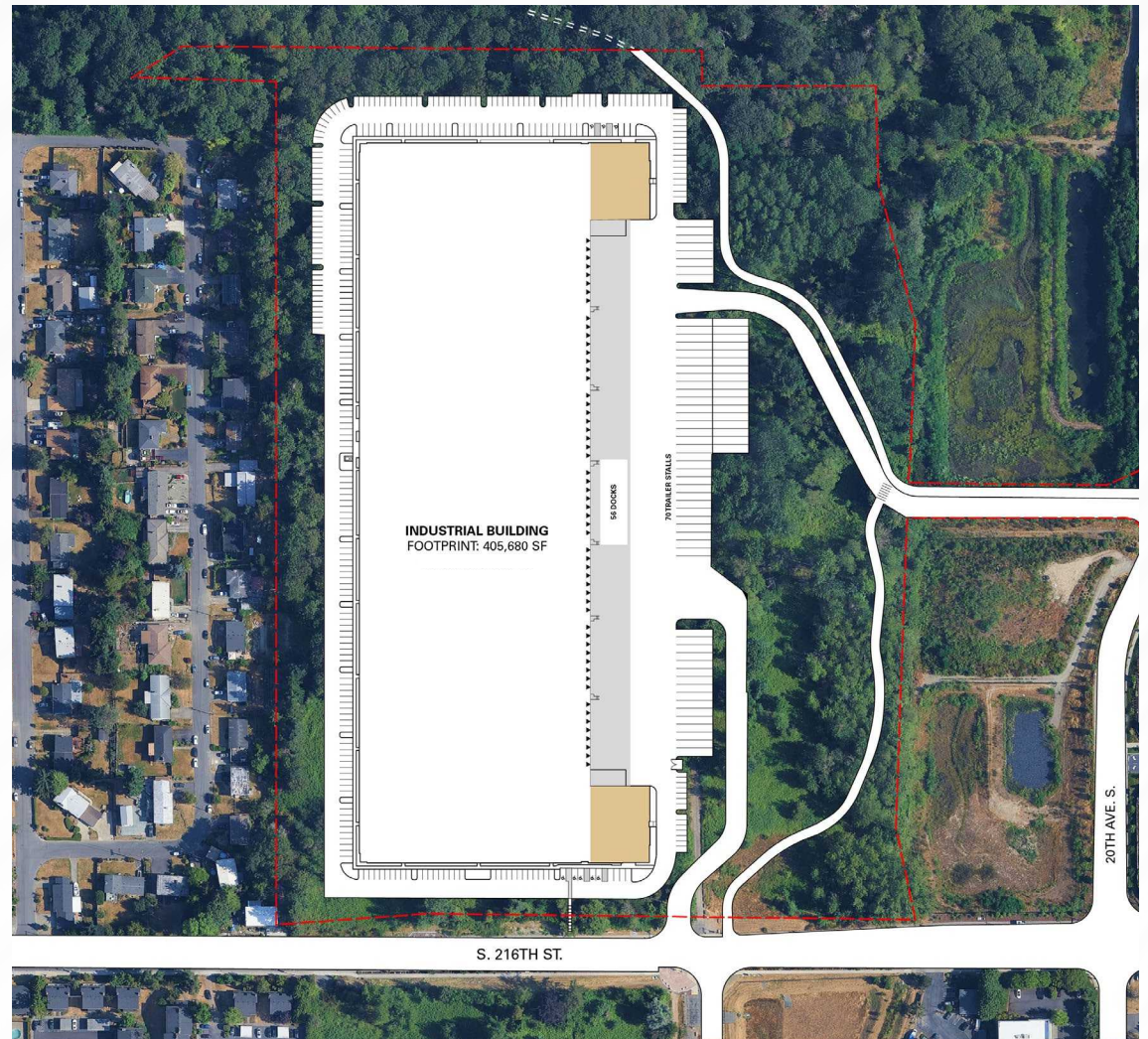


POWER

3,000 AMPS, 277/480V 3-Phase
Ability to Increase
(To Be Independently Verified)

Property Highlights

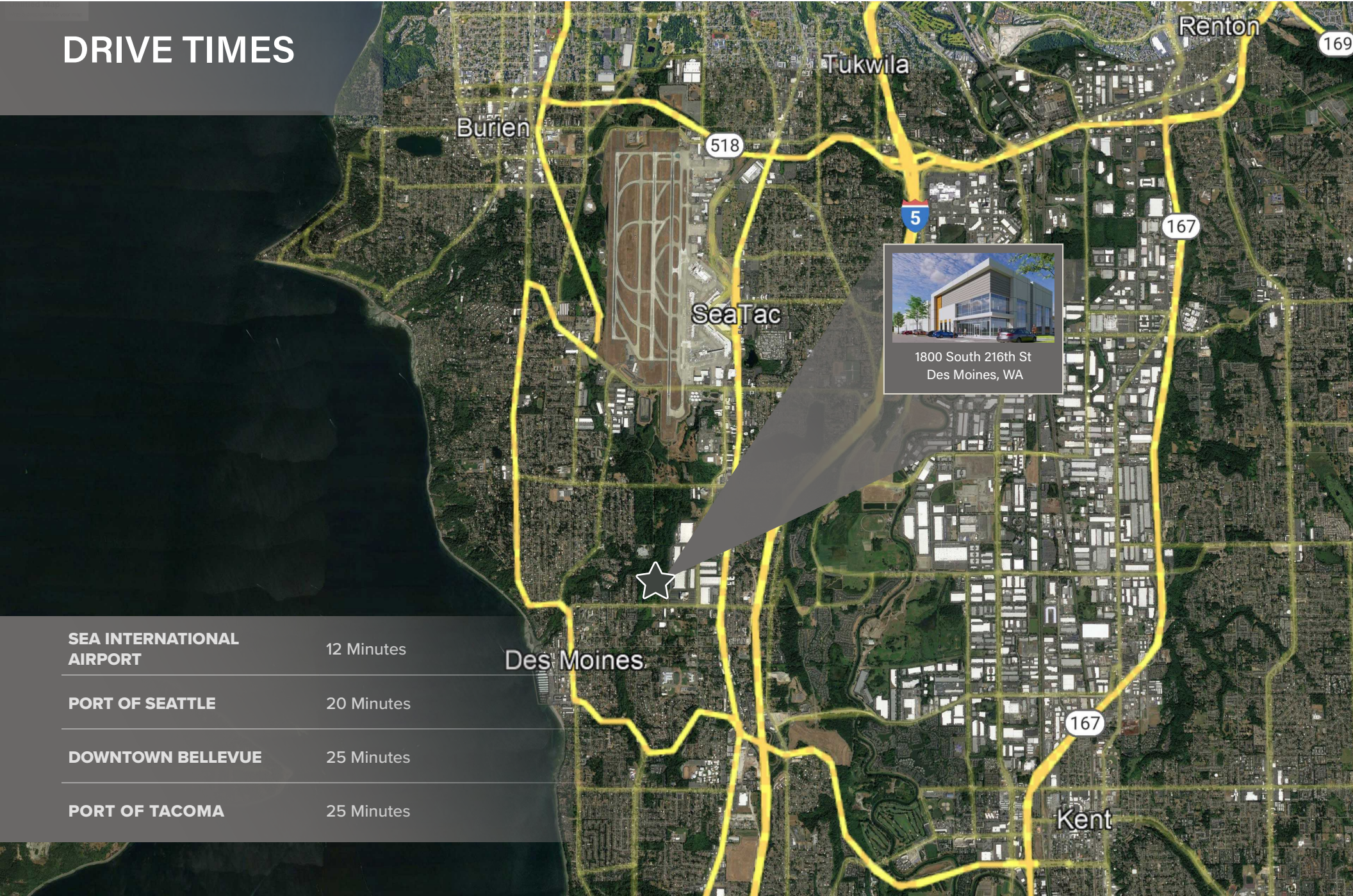
- Available for occupancy August 1, 2026
- Immediate access to I-5
- ESFR fire protection
- LED warehouse lighting and exterior wall pack lighting



DEVELOPMENT PROGRESS



DRIVE TIMES



SITE BENEFITS

- Last opportunity of this size in the Des Moines area
- Adjacent to walking paths and wetland preservation centers
- Located next to FAA Headquarters
- Close to SEA International Airport
- Easy Access to I-5
- Proximity to Light Rail



DEMOGRAPHICS

Des Moines Fast Facts:

Population: 33,857

Labor Force: 18,009

Unemployment: 7.4%

Median Age: 39 years

Median Household Income: \$82,554

Cost of Living Index: 128.4

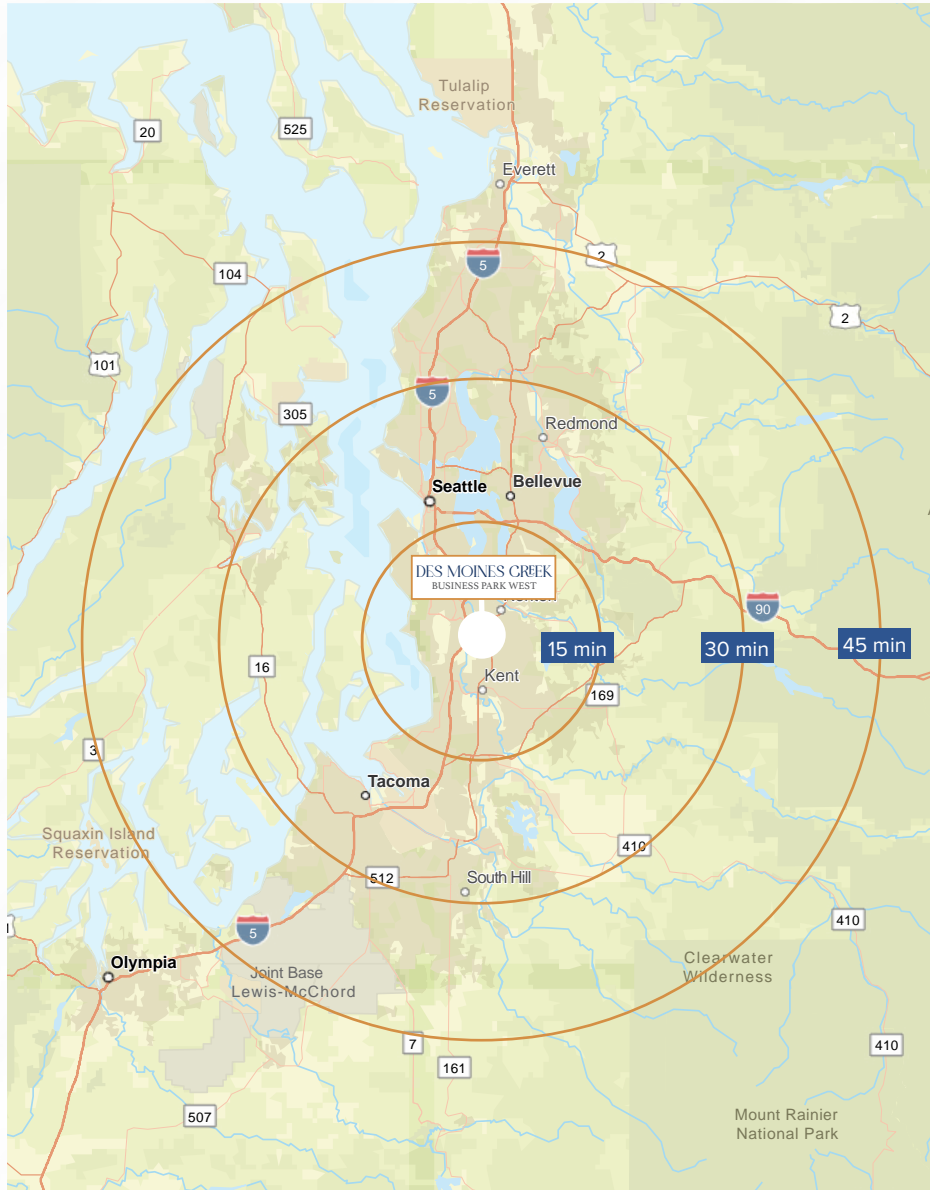
Area: 7.41 sq mi

Median Home Price: \$484,925

Average Commute Time: 30 minutes

Gross Metro Product: \$56.2M

Primary Industries: Professional Services, Manufacturing,
Transportation/Utilities, Construction



Travel Times for Map

15 min: Kent, SeaTac

30 min: Seattle, Auburn, Renton

45 min: Lakewood, Shoreline, Bothell