

ELEVATOR SUPPORT
COMPANY

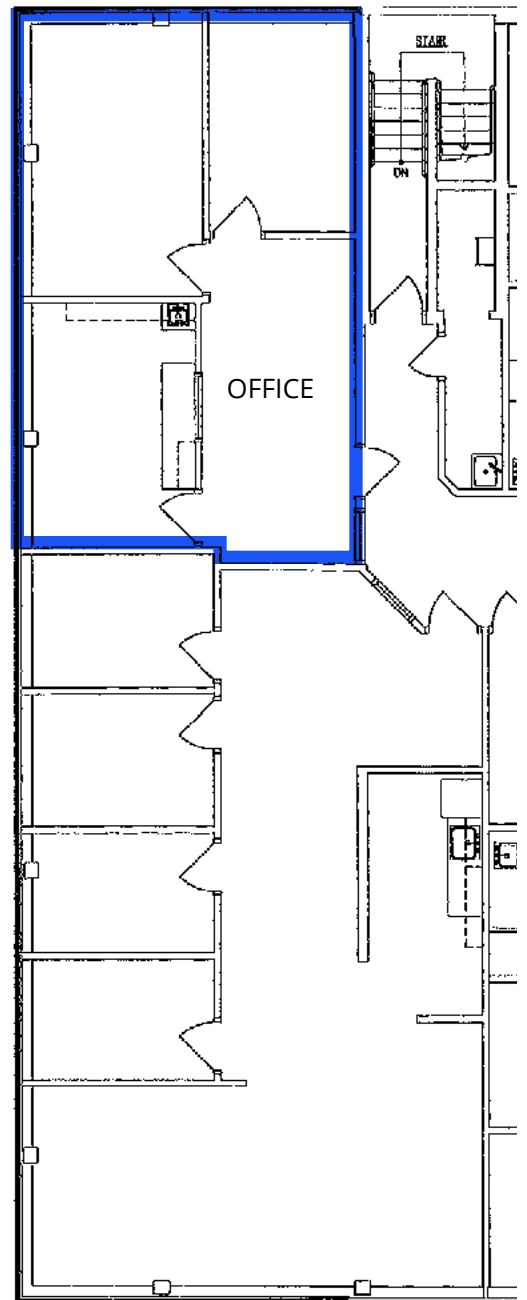
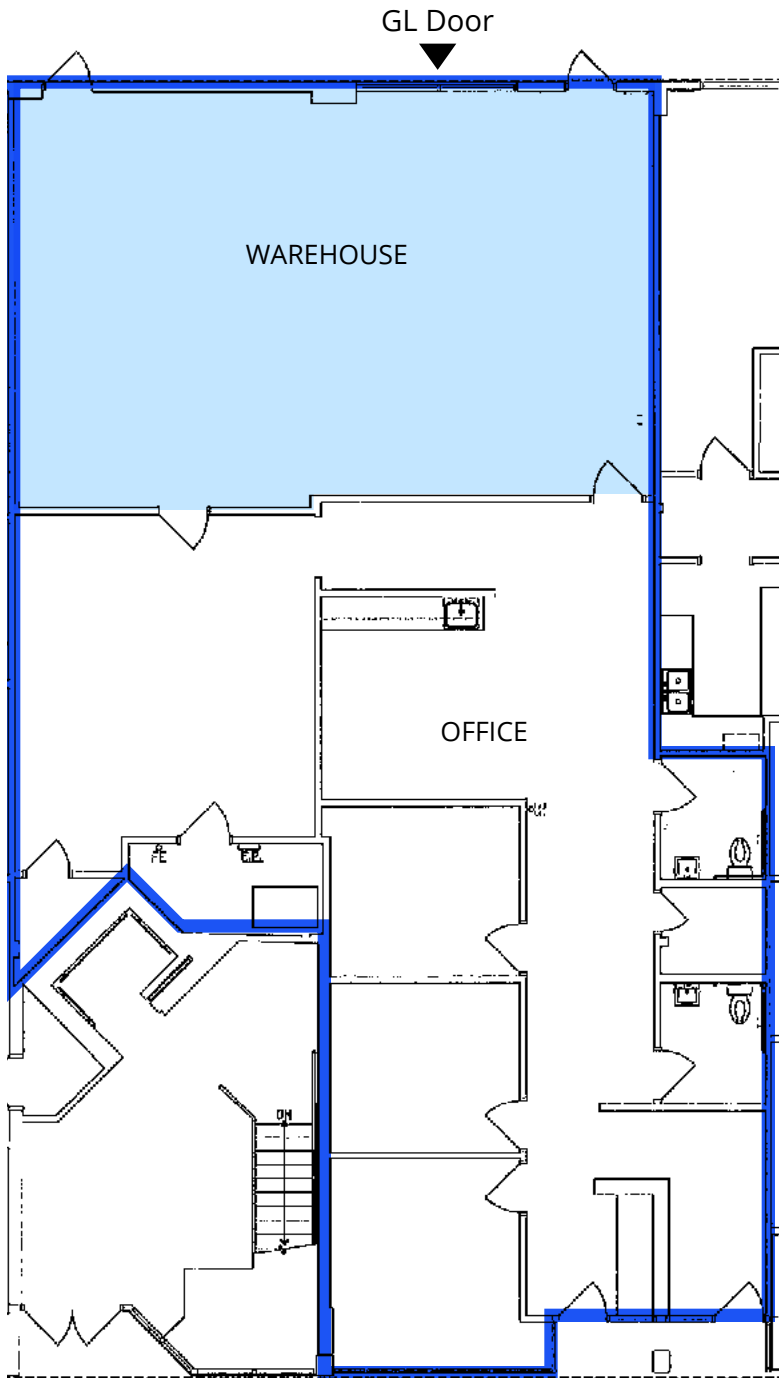
SYSTEM PAVERS

For Sublease

891 RSF - 3,942 RSF
Between Two Suites**Talor Okada**Executive Vice President
+1 425 453 3127
talor.okada@colliers.com**Jack Dennis**Associate
+1 206 353 3912
jack.dennis@colliers.com**Rich Sander**Associate Vice President
+1 425 453 4547
rich.sander@colliers.com**Jack Heed**Associate
+1 425 412 0409
jack.heed@colliers.comHigh Image Lynnwood Office
& Warehouse for Sublease

19109 36th Ave W, Lynnwood, WA 98036

- **Total Available: ±3,942 RSF**
- Suite 108: ±3,051 RSF total
 - » ±2,051 RSF office
 - » ±1,000 RSF warehouse
- Suite 204: ±891 RSF office total
- Move-in ready condition with high image finishes and highly functional layout
- One (1) grade level loading door (8'x10') and 11' clear height in warehouse
- Convenient Lynnwood location with numerous nearby amenities and only minutes from Alderwood Mall & I-5
- Reduced Monthly Asking Rate:
 - » Suite 108: \$7,119.00 per month, full service
 - » Suite 204: \$2,079.00 per month, full service
 - » Suites can be leased separately or together
- Sublease term through July 31, 2030 (Direct Deal Possible)



Suite 108:

- ±2,051 RSF Office
- ±1,000 RSF Warehouse
- ±3,051 RSF Total



Suite 204:

- ±891 RSF Office
Total

For Lease

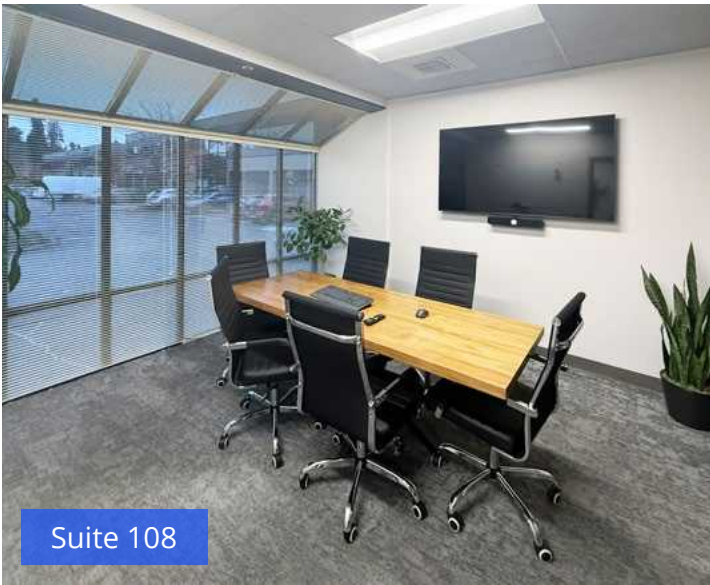
19109 36th Ave W, Lynnwood, WA 98036



Suite 204



Suite 204



Suite 108



Suite 108



Suite 108



Suite 108

For Lease

19109 36th Ave W, Lynnwood, WA 98036



Alderwood Mall

NORDSTROM ★ macy's CHIPOTLE
 REI AMC THEATRES jamba CINNABON
 The Cheesecake Factory DAVE & BUSTER'S See's CANDIES Auntie Anne's
 P.F. CHANG'S CHINA BISTRO 24 FITNESS CHARLEYS CHEESESTEAKS - WINGS
 Blazing Onion PANDA EXPRESS STARBUCKS On the Border mexican grill & cantina Bath & Body Works
 JCPenney CallBurger H&M ZARA

Talor Okada
 Executive Vice President
 +1 425 453 3127
 talor.okada@colliers.com

Jack Dennis
 Associate
 +1 206 353 3912
 jack.dennis@colliers.com

Rich Sander
 Associate Vice President
 +1 425 453 4547
 rich.sander@colliers.com

Jack Heed
 Associate
 +1 425 412 0409
 jack.heed@colliers.com



Colliers Bellevue
 11225 SE 6th St, Suite 240
 Bellevue, WA, 98004
 colliers.com

This document has been prepared by Colliers International for advertising and general information only. Colliers International makes no guarantees, representations or warranties of any kind, expressed or implied, regarding the information including, but not limited to, warranties of content, accuracy and reliability. Any interested party should undertake their own inquiries as to the accuracy of the information. Colliers International excludes unequivocally all inferred or implied terms, conditions and warranties arising out of this document and excludes all liability for loss and damages arising there from. This publication is the copyrighted property of Colliers International and/or its licensor(s). ©2026 All rights reserved.