



FOR SUBLEASE THROUGH DECEMBER 31, 2030

## 17,057 Class A Warehouse

6242 S 196th Street, Kent, WA 98032

**Matt Wood, SIOR**

+1 206 595 6814

[matt.wood@kbcadvisors.com](mailto:matt.wood@kbcadvisors.com)

**John Broom**

+1 206 877 2750

[john.broom@kbcadvisors.com](mailto:john.broom@kbcadvisors.com)

**KBC Advisors | Seattle**

5628 Airport Way, Suite 238

Seattle, WA 98108

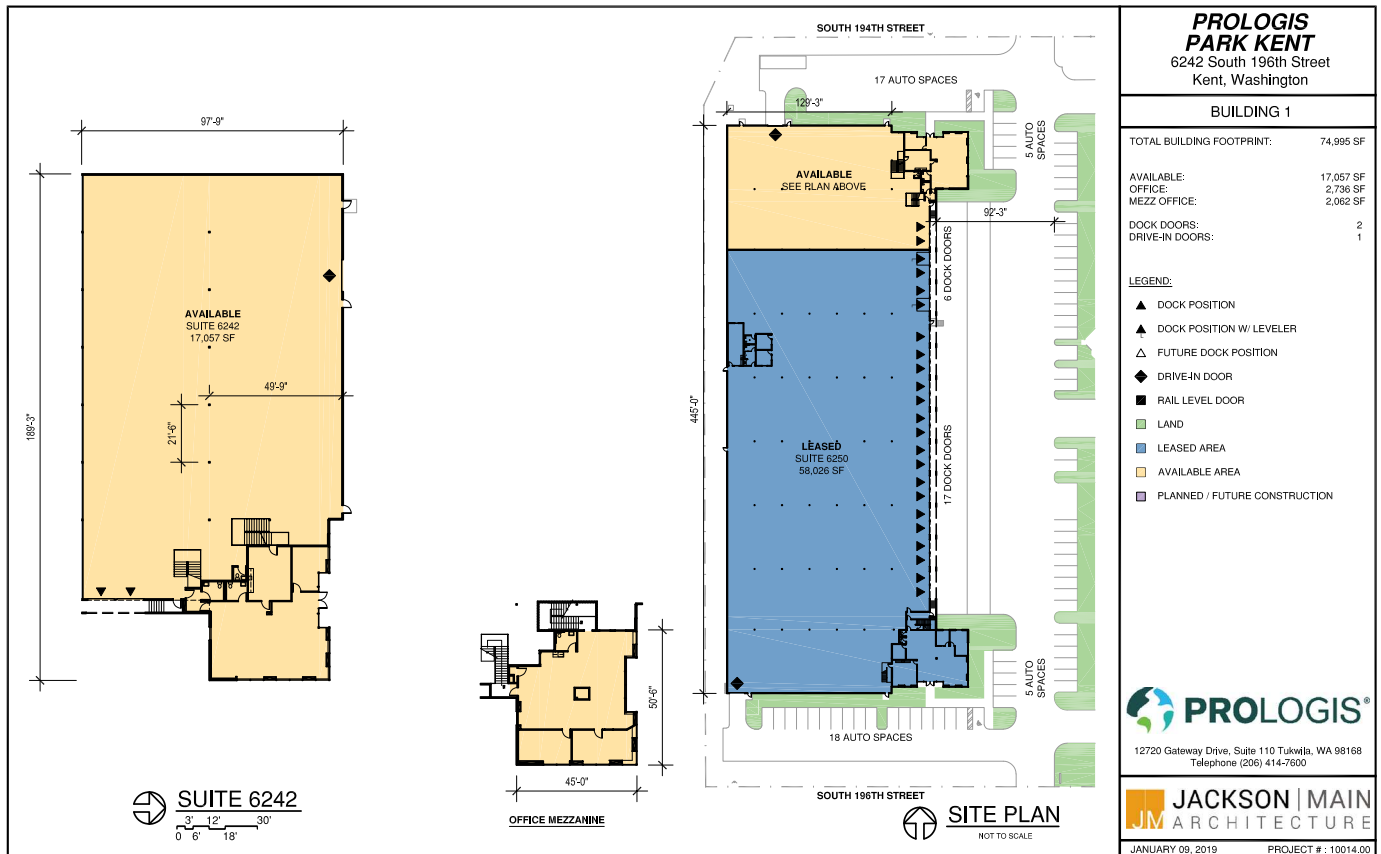
**17,057**  
Square Feet

**4,202**  
SF Office

**2**  
Dock-high doors

**1**  
Grade-level door

**21'-24'**  
Clear Height



**Matt Wood, SIOR**  
+1 206 595 6814  
matt.wood@kbcadvisors.com

**John Broom**  
+1 206 877 2750  
john.broom@kbcadvisors.com

**KBC Advisors | Seattle**  
5628 Airport Way, Suite 238  
Seattle, WA 98108

© 2026 KBC ADVISORS This information has been obtained from sources believed to be reliable but has not been verified for accuracy or completeness, and KBC Advisors disclaims any guarantees, warranties or representations, express or implied, as to the completeness or accuracy as to the information contained herein. You should conduct a careful, independent investigation of the property and verify all information. Any reliance on this information is solely at your own risk. The KBC ADVISORS logo is a service mark of KBC ADVISORS. All other marks displayed on this document are the property of their respective owners. Photos herein are the property of their respective owners. Use of these images without the express written consent of the owners is prohibited.

