

FOR LEASE



5201 Evergreen Way, Suite B

Everett, WA

Former dental office space with retail frontage, ample parking, and excellent visibility and access from Evergreen Way and 52nd St SE.

PROPERTY HIGHLIGHTS

- + Available 7/1/2026
- + NNN: \$5.85/SF/YR
- + High visibility and easy access
- + Located minutes from I-5
- + Retail frontage and ample parking
- + Perfect for dental or medical users

TOTAL SF

1,900 SF

LEASE RATE

\$25.00

TYPE

NNN

BLAKE STEDMAN

Senior Vice President

+1 425 586 5621

bstedman@nai-psp.com

RICHARD ZHOU

Associate

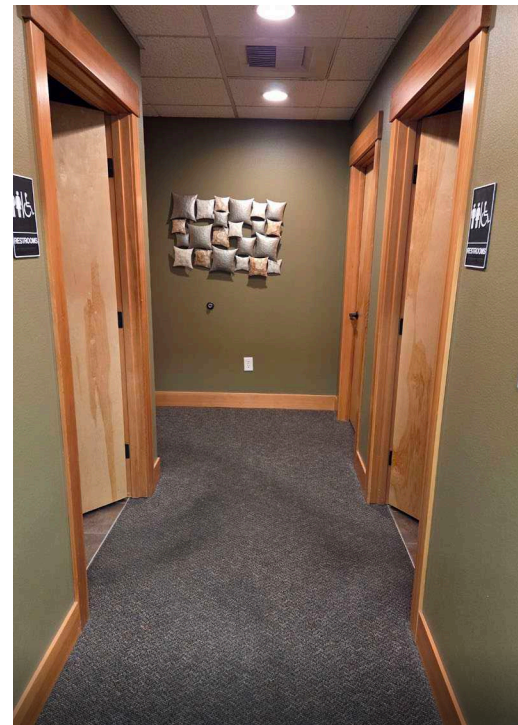
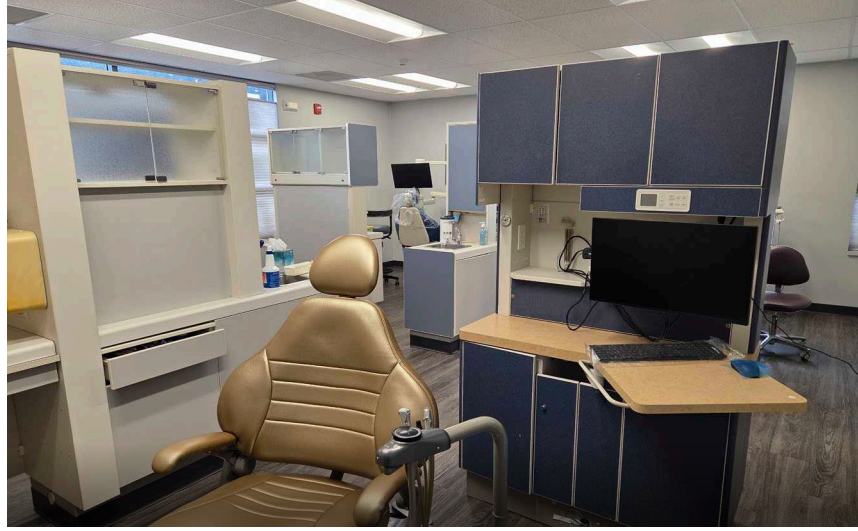
+1 425 586 5623

rzhou@nai-psp.com



THE INFORMATION CONTAINED HEREIN HAS BEEN GIVEN TO US BY THE OWNER OF THE PROPERTY OR OTHER SOURCES WE DEEM RELIABLE. WE HAVE NO REASON TO DOUBT ITS ACCURACY, BUT WE DO NOT GUARANTEE IT. ALL INFORMATION SHOULD BE VERIFIED PRIOR TO PURCHASE OR LEASE.

*Dental office space
for lease in Everett*



BLAKE STEDMAN
Senior Vice President
+1 425 586 5621
bstedman@nai-ppsp.com

RICHARD ZHOU
Associate
+1 425 586 5623
rzhou@nai-ppsp.com



Demographics



5201 EVERGREEN WAY, SUITE B, EVERETT, WA

	1 MILE	3 MILES	5 MILES
Population	13,646	79,400	179,180
2030 Population	13,833	81,145	184,384
Households	5,189	32,236	70,237
Median Age	40.3	39.0	38.2
Median HH Income	\$97,851	\$85,167	\$88,597

BLAKE STEDMAN
 Senior Vice President
 +1 425 586 5621
 bstedman@nai-psp.com

RICHARD ZHOU
 Associate
 +1 425 586 5623
 rzhou@nai-psp.com

