

RETAIL FOR LEASE

FREDONIA

534 15th Ave East, Seattle, WA 98112

AVAILABLE
NOW



For more information please contact:

LAURA MILLER

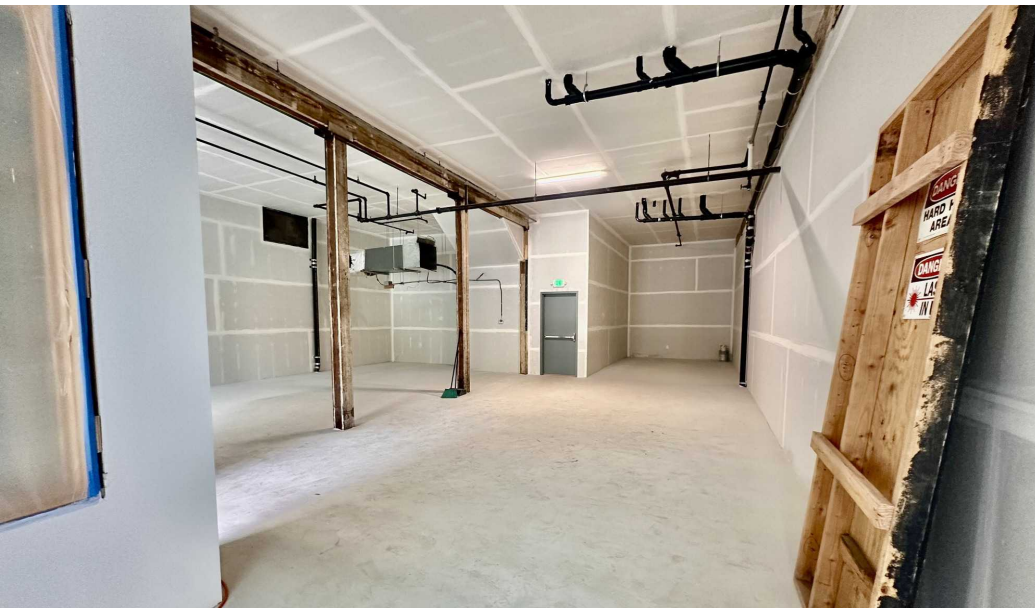
laura@gibraltarusa.com

206.351.3573



534 15TH AVENUE EAST, SEATTLE, WA 98112

RETAIL FOR LEASE



PROPERTY HIGHLIGHTS

- Bring your concept! Rare corner vacancy in a character-rich building located on Capitol Hill's bustling 15th Ave E
- Newly renovated Building storefront, designed by SkB Architects, features exposed wood beams and columns, exposed brick, concrete floors, sliding storefront windows, HVAC
- Ideal for coffee/cafe, wine bar, ice cream shop, boutique retail
- Retail Co-tenant is MOOV SEATTLE Pilates studio (coming soon)
- Surrounding businesses include: Bar Cantinetta, Rudy's Barbershop, NufLOURS Bakery, Harry's Bar and more!
- 1,752 RSF
- Rental Rate: \$40 PSF plus estimated 2026 NNN (\$9.00/RSF) = \$7,155/mo



71

TRANSIT SCORE



93

WALK SCORE



95

BIKE SCORE



197,563

TOTAL POPULATION



114,347

TOTAL HOUSEHOLDS



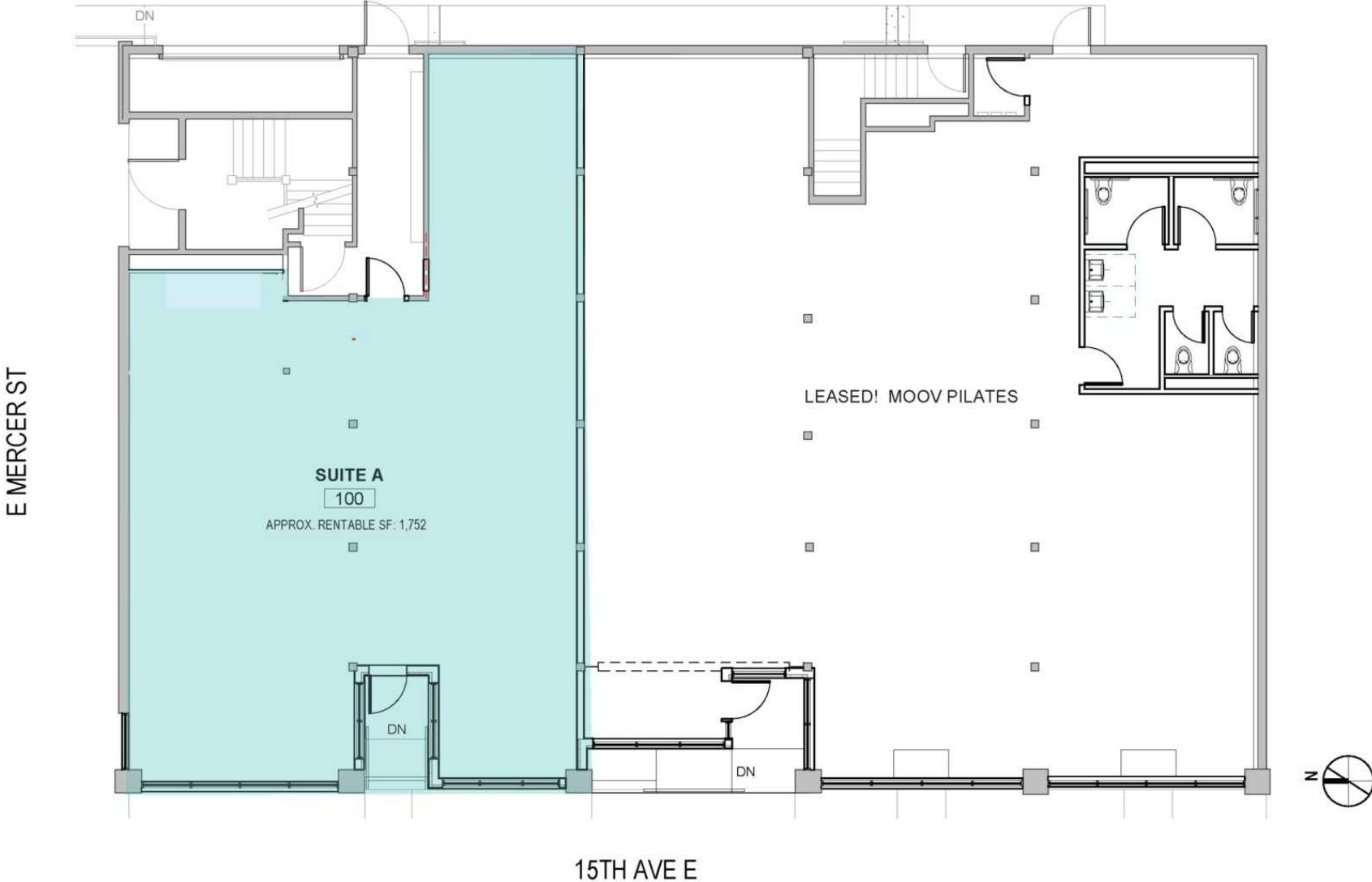
\$120,041

MEDIAN INCOME

* Estimated 2025 Demographics based on a 2 mile radius (CoStar)

534 15TH AVENUE EAST, SEATTLE, WA 98112

RETAIL FOR LEASE



534 15TH AVENUE EAST, SEATTLE, WA 98112

RETAIL FOR LEASE

