

# DAVIS COMMERCE CENTER

22757 72nd Ave S, Suite E-104 Kent, WA 98032

Available Immediately

Warehouse/Flex Space



## Property Specifications

- 2,636 SF Total
- 716 SF Office
- 1 Grade Level Door
- Office HVAC
- 200 Amps 120/208 Volt 3-Phase Power
- 12' Clear Height
- New finishes and LED lighting

## Property Features

- West Valley Highway Visibility
- Excellent freeway access to Highway 167 & I-5
- Monitored Video Surveillance & Security
- Comcast cable and fiber available



Owned & Operated by:

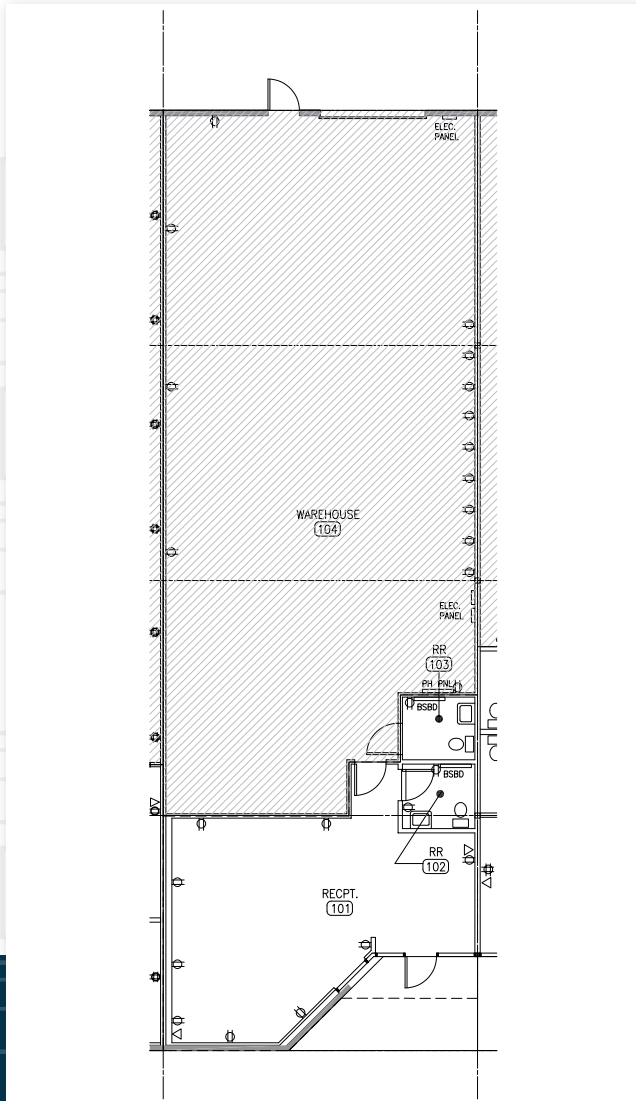


Leasing by:



[dpillc.com](http://dpillc.com)

# DAVIS COMMERCE CENTER



Contact Kidder Mathews for more info:

Travis Stanaway  
206-248-6526  
travis.stanaway@kidder.com

Dane Dahline  
206-248-6519  
dane.dahline@kidder.com

Lisa Rowe  
206-777-5122  
lisar@dpillc.com

The information provided in this document should be independently verified on any material matter represented herein.

Owned & Operated by: **DPI** Davis Property & Investment

Leasing by: **km** Kidder Mathews

dpillc.com