

# COVINGTON 18

28009 Covington Way SE, Covington, WA

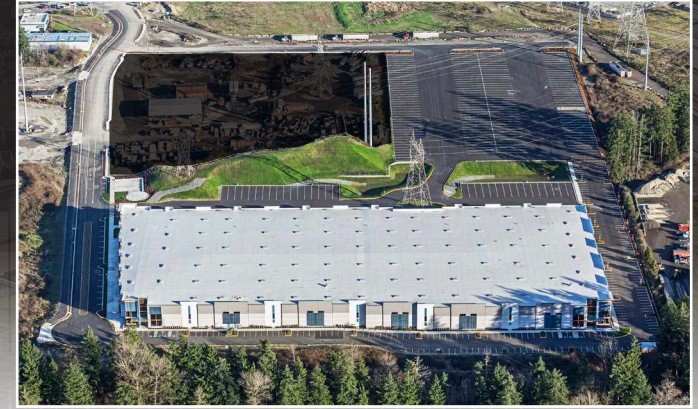
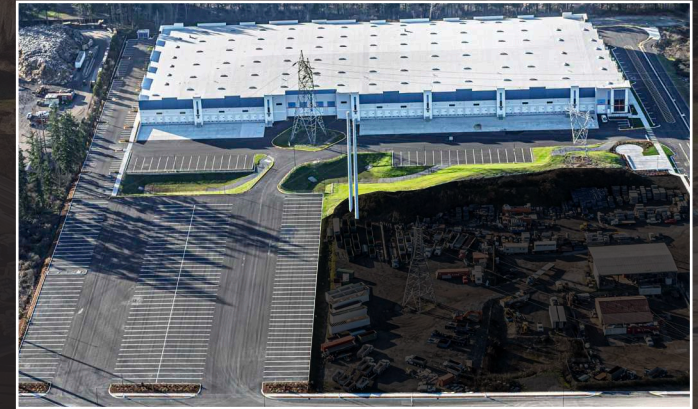
247,409 SF | Class A

Strategically located between the Port of Seattle & Port of Tacoma

FOR LEASE

 PANATTONI

[www.covington18.com](http://www.covington18.com)



Matt Wood, SIOR  
206 595 6814  
[matt.wood@kbcadvisors.com](mailto:matt.wood@kbcadvisors.com)

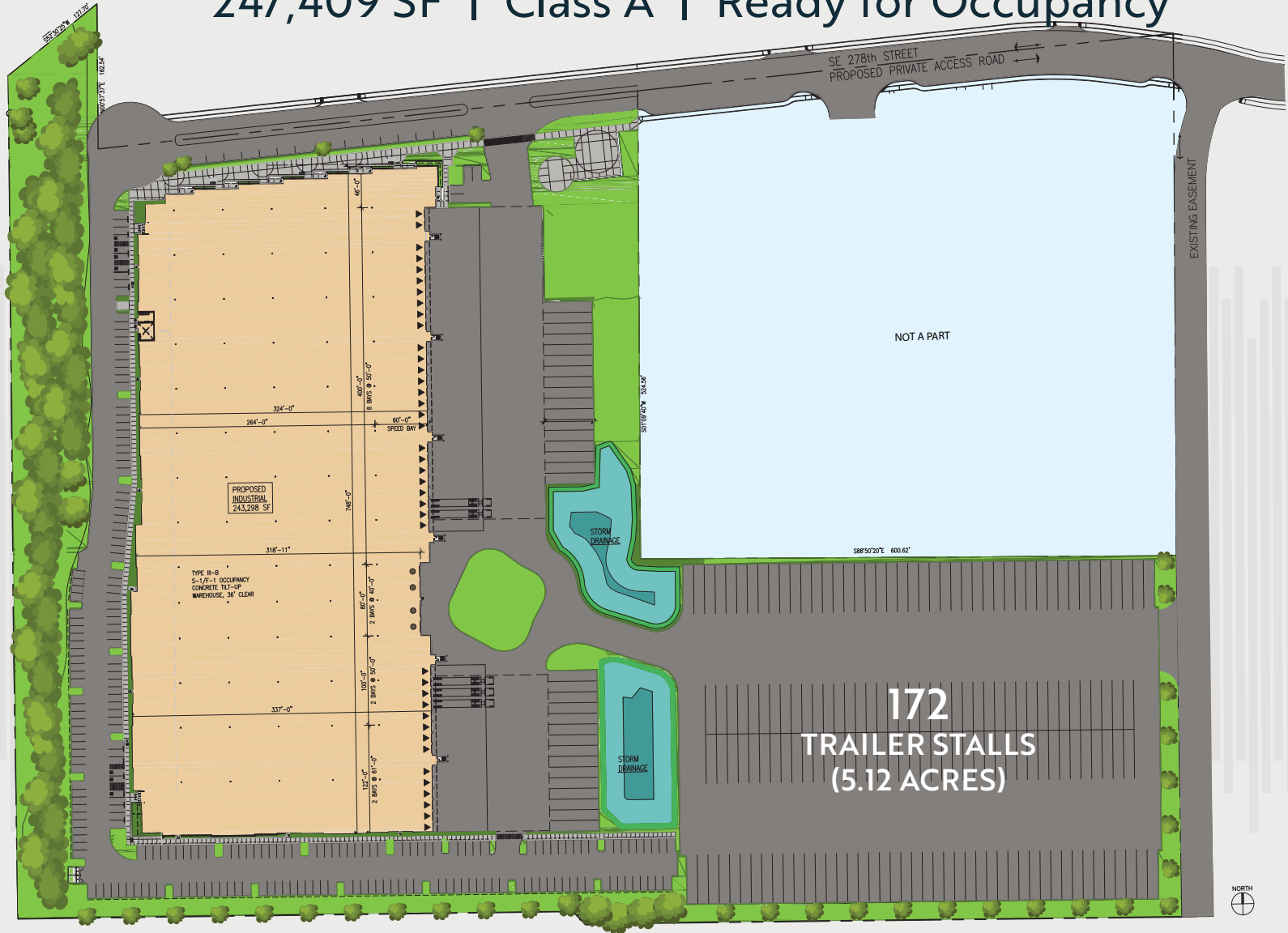


Todd Clarke  
253 722 1422  
[todd.clarke@kidder.com](mailto:todd.clarke@kidder.com)

Ty Clarke  
253 722 1419  
[ty.clarke@kidder.com](mailto:ty.clarke@kidder.com)



# 247,409 SF | Class A | Ready for Occupancy

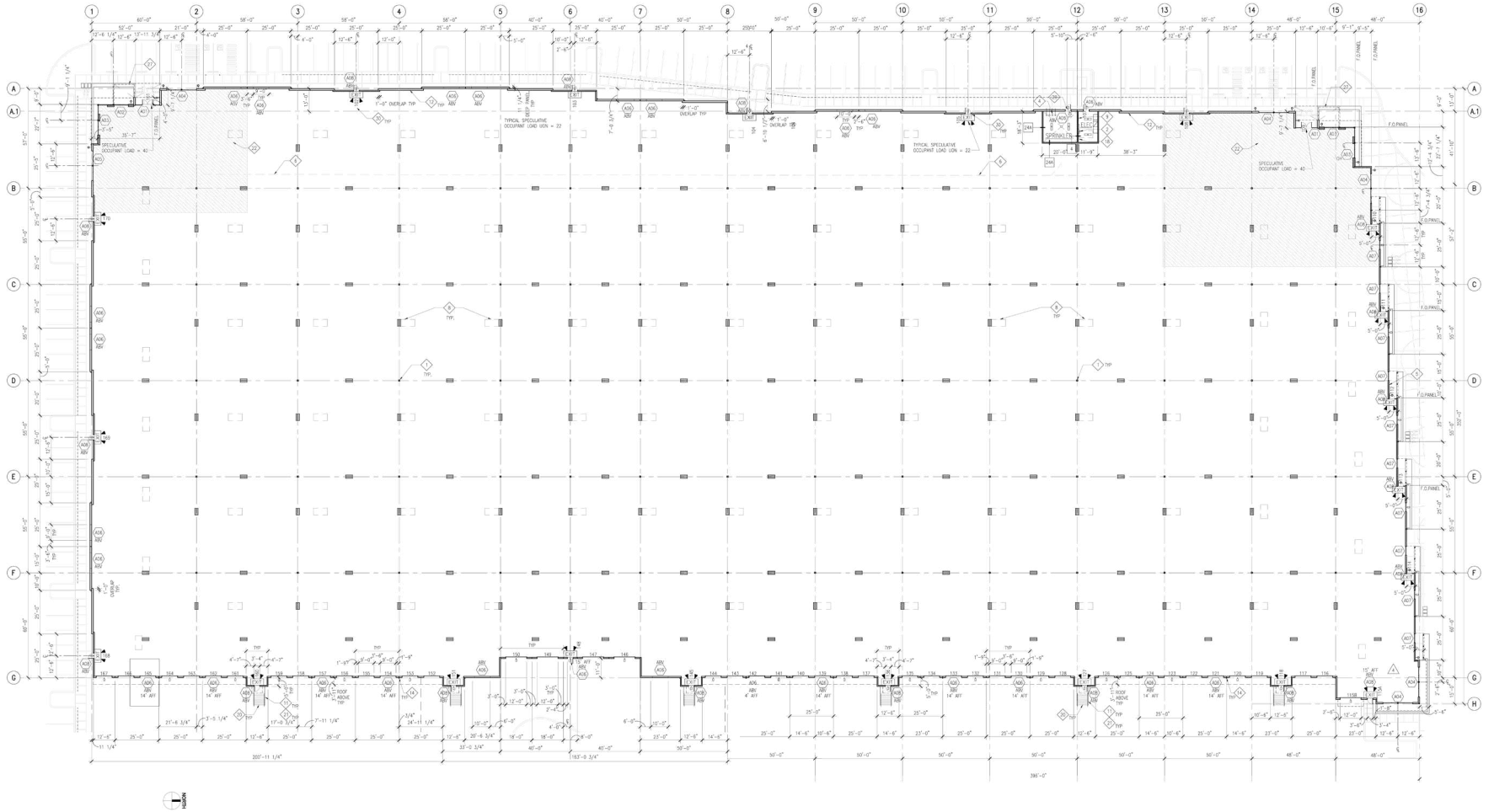


## SPECS

- BTS Office
- 41 Dock-High Doors
- 5 Grade-Level Doors
- 36' Clear Height
- ESFR Sprinkler
- Power: 3,000 Amps, 3-Phase
- 257 Auto Stalls
- 205 Trailer Stalls
- 7" Reinforced Slab
- 130' Truck Court
- Column Spacing 52' x 52'
- 60' Speed Bay
- 60' Concrete Apron



# 247,409 SF | Class A | Ready for Occupancy



Matt Wood, SIOR  
206 595 6814  
matt.wood@kbcadvisors.com



Todd Clarke  
253 722 1422  
todd.clarke@kidder.com

Ty Clarke  
253 722 1419  
ty.clarke@kidder.com



© 2026 KBC ADVISORS This information has been obtained from sources believed to be reliable but has not been verified for accuracy or completeness, and KBC Advisors disclaims any guarantees, warranties or representations, express or implied, as to the completeness or accuracy as to the information contained herein. You should conduct a careful, independent investigation of the property and verify all information. Any reliance on this information is solely at your own risk. The KBC ADVISORS logo is a service mark of KBC ADVISORS. All other marks displayed on this document are the property of their respective owners. Photos herein are the property of their respective owners. Use of these images without the express written consent of the owners is prohibited.

 **35 MINUTES**  
PORT OF SEATTLE

 **28 MINUTES**  
SEATAC AIRPORT

 **25 MINUTES**  
PORT OF TACOMA



- Ability to secure site
- Strategically located between the Port of Seattle & Port of Tacoma
- Excellent access to Highway 18
- 15 minutes to Auburn or Kent



Matt Wood, SIOR  
206 595 6814  
matt.wood@kbcadvisors.com



Todd Clarke  
253 722 1422  
todd.clarke@kidder.com

Ty Clarke  
253 722 1419  
ty.clarke@kidder.com



© 2026 KBC ADVISORS This information has been obtained from sources believed to be reliable but has not been verified for accuracy or completeness, and KBC Advisors disclaims any guarantees, warranties or representations, express or implied, as to the completeness or accuracy as to the information contained herein. You should conduct a careful, independent investigation of the property and verify all information. Any reliance on this information is solely at your own risk. The KBC ADVISORS logo is a service mark of KBC ADVISORS. All other marks displayed on this document are the property of their respective owners. Photos herein are the property of their respective owners. Use of these images without the express written consent of the owners is prohibited.