

# skyline tower

10900 NE 4th St., Bellevue, WA 98004  
[skylinetowerbellevue.com](http://skylinetowerbellevue.com)

## OFFICE FOR LEASE

---

**9,678 - 50,667 RSF**  
**Available Now**

---

**3,165 RSF**  
**Available 10/1/2026**

---

**3,568 RSF**  
**Available 1/1/2027**

---

### **MIKE SCHRECK**

Executive Managing Director  
206.850.7000  
[mike.schreck@nrmk.com](mailto:mike.schreck@nrmk.com)

### **TIM O'KEEFE**

Executive Managing Director  
425.362.1401  
[tim.okeefe@nrmk.com](mailto:tim.okeefe@nrmk.com)

**NEWMARK**

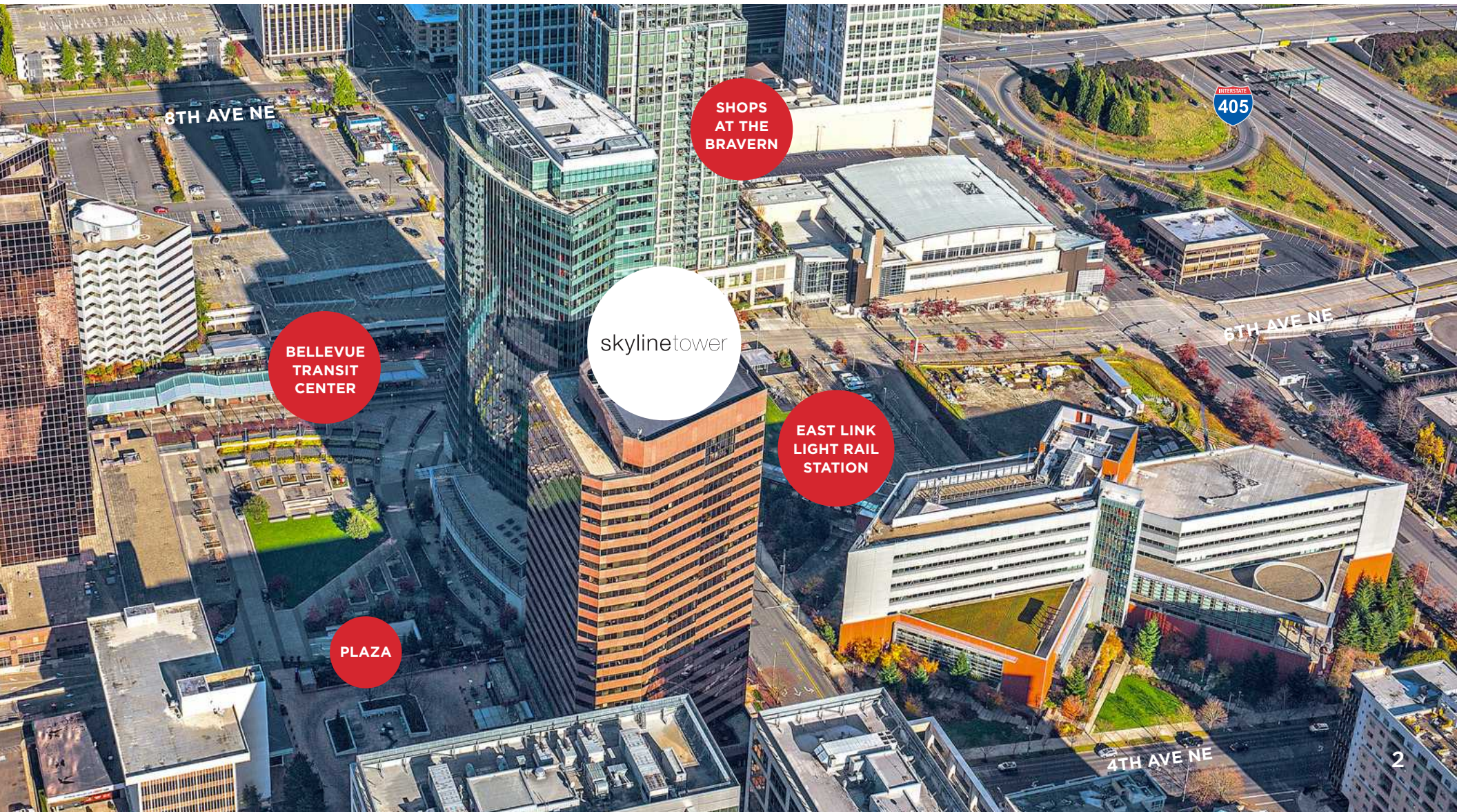


# LOCATION

---

Skyline Tower is located in Bellevue's central business district, and offers immediate access to the freeway system (I-405, SR 520 and I-90), the Bellevue Transit Center and the East Link Light Rail Station.

Rated a 92 by walkscore.com and deemed "A Walker's Paradise", Skyline Tower offers pedestrian-friendly access to Bellevue Square, The Shops at the Bravern, and over 100 restaurants, coffee shops, grocers, stores, and entertainment venues.



# BUILDING

---

- **24-story, Class A Office Building** that can be customized to meet the needs of growing businesses
- **LEED Gold Certified** for best-in-class energy and environmental strategies and practices
- **Large, Efficient Floor Plates** 18,500 square feet of leasable column free space per floor
- **Ample Ceiling Height** Generous 11'6" - 12' ceiling heights and large windows offer enhanced natural lighting and expansive views
- **Climate Control** HVAC system updated with fully digital controls allows tenants to modify temperature levels to meet individual needs
- **Fire Life Safety** Building is fitted with a state-of-the-art Cerberus Polytronics system
- **Elevators** Eight digitally controlled passenger elevators; Two dedicated garage elevators, one freight elevator
- **Parking** Five-level underground parking facility offering 2.0/1,000 RSF



10900 NE 4th St., Bellevue, WA 98004  
[skylinetowerbellevue.com](http://skylinetowerbellevue.com)

# AMENITIES



**Newly renovated lobby and exterior plaza** with modern finishes and gathering areas that promote collaboration.



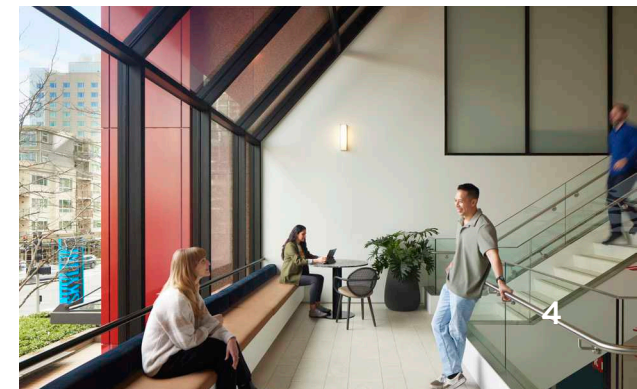
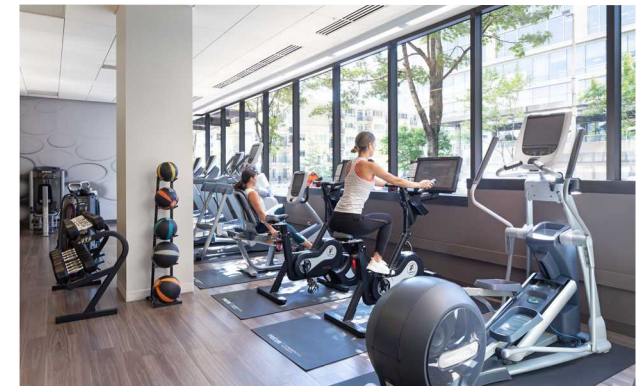
**The best private fitness center on the Eastside** with 3,400 SF of state-of-the-art equipment and a shower room with daily towel service.



**Store your bike in Skyline's on-site, 750 SF premier bike facility** with 32 bike lockers and direct access to the fitness center and shower rooms.



**Modernized plaza provides comfortable outdoor seating** areas and attracts a variety of daily food trucks.



# 14th Floor

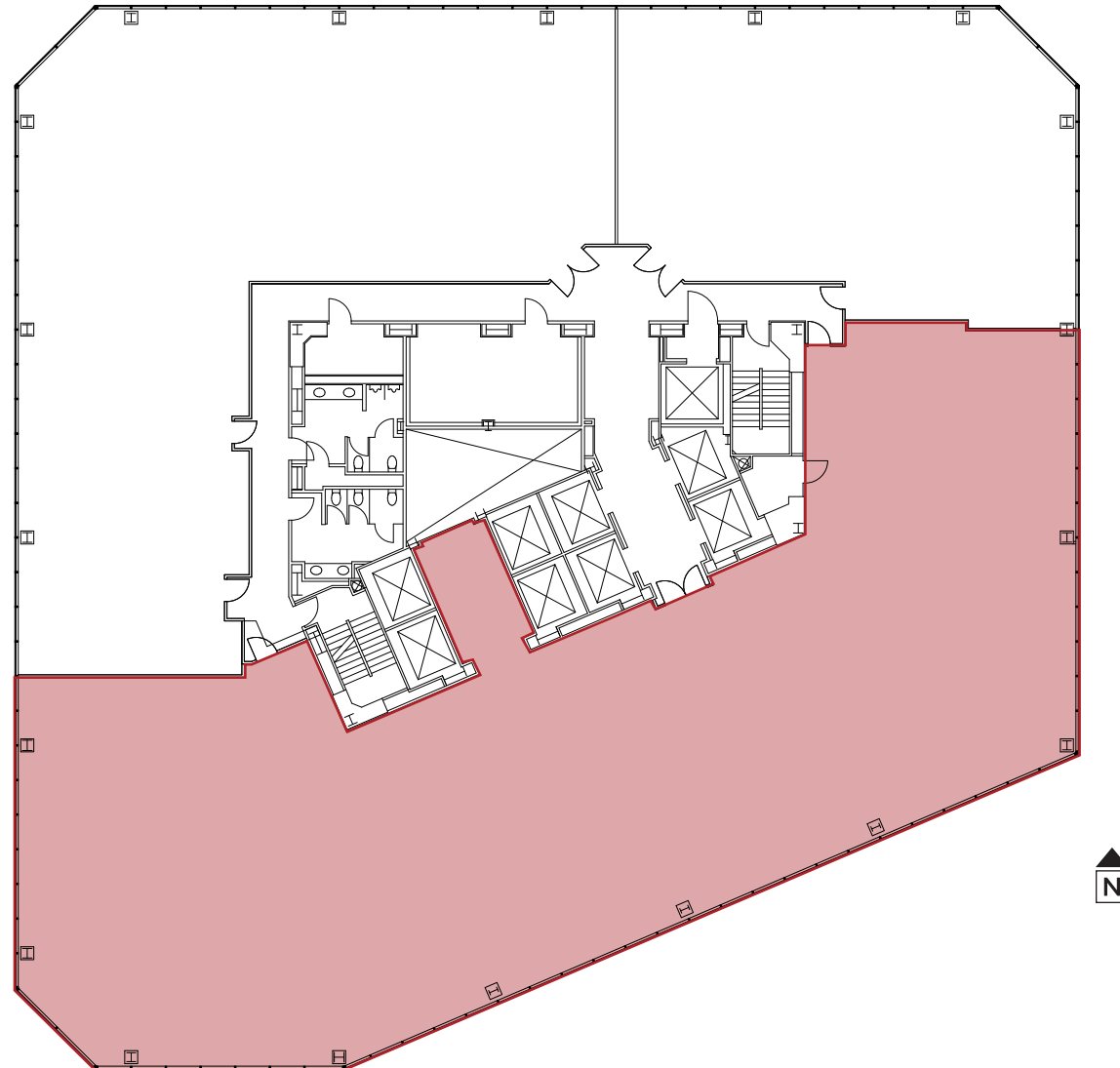
---

## SUITE 1400

9,678 SF

Available Now

[VIEW VIRTUAL TOUR](#)



# 16th Floor

## SUITE 1600

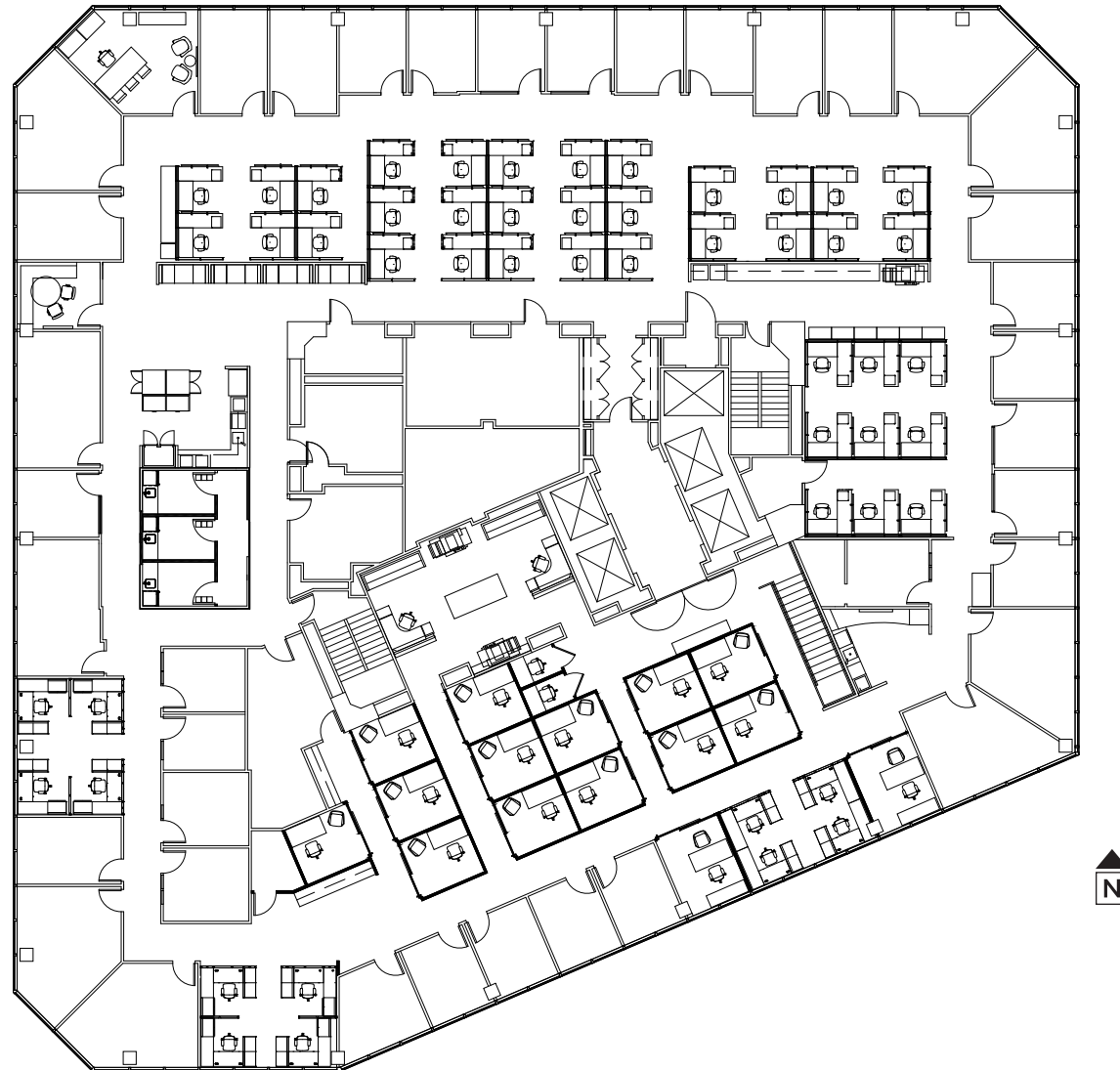
18,953 SF

Available Now



# 17th Floor

**SUITE 1700**  
18,953 SF  
Available Now



# 19th Floor

## SUITE 1950

3,568 SF

Available 1/1/27



# 22nd Floor

## SUITE 2230

3,165 SF

Available 10/1/26



LAKE WASHINGTON



LinkedIn  
LUMEN  
ByteDance  
TikTok

VALVE

THE BELLEVUE  
COLLECTION™

PACCAR

amazon

amazon

The Pokémon Company  
INTERNATIONAL

amazon

BUNGIE

zoom

Uber

smartsheet

CONCUR

skylinetower

salesforce

OpenAI

amazon

UiPath

amazon

LIGHT RAIL  
STATION

THE SHOPS AT THE  
BRAVERN



**MIKE SCHRECK**

Executive Managing Director  
206.850.7000  
mike.schreck@nrmk.com

---

**TIM O'KEEFE**

Executive Managing Director  
425.362.1401  
tim.okeefe@nrmk.com

**K I L R O Y**

**NEWMARK**

The information contained herein has been obtained from sources deemed reliable but has not been verified and no guarantee, warranty or representation, either express or implied, is made with respect to such information. Terms of sale or lease and availability are subject to change or withdrawal without notice.