



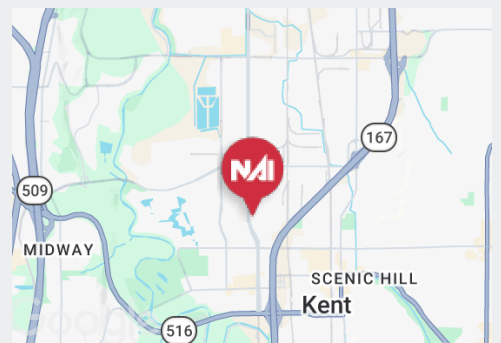
Park 234 - Building A

23414 68th Ave S, Kent, WA

Prime warehouse location in Kent for lease with convenient access to Hwy 167.

PROPERTY HIGHLIGHTS

- + 5,000 SF total (1,827 SF office)
- + 2 DH & 1 GL loading doors
- + 16' clear height
- + Fully sprinklered
- + West Valley Highway frontage
- + Abundant parking
- + Available July 1st, 2026
- + Lease rate: \$1.20 PSF shell, \$1.30 PSF office, \$0.31 NNNs



KENT CHANNING
 Partner
 +1 425 586 5628
 kchanning@nai-psp.com

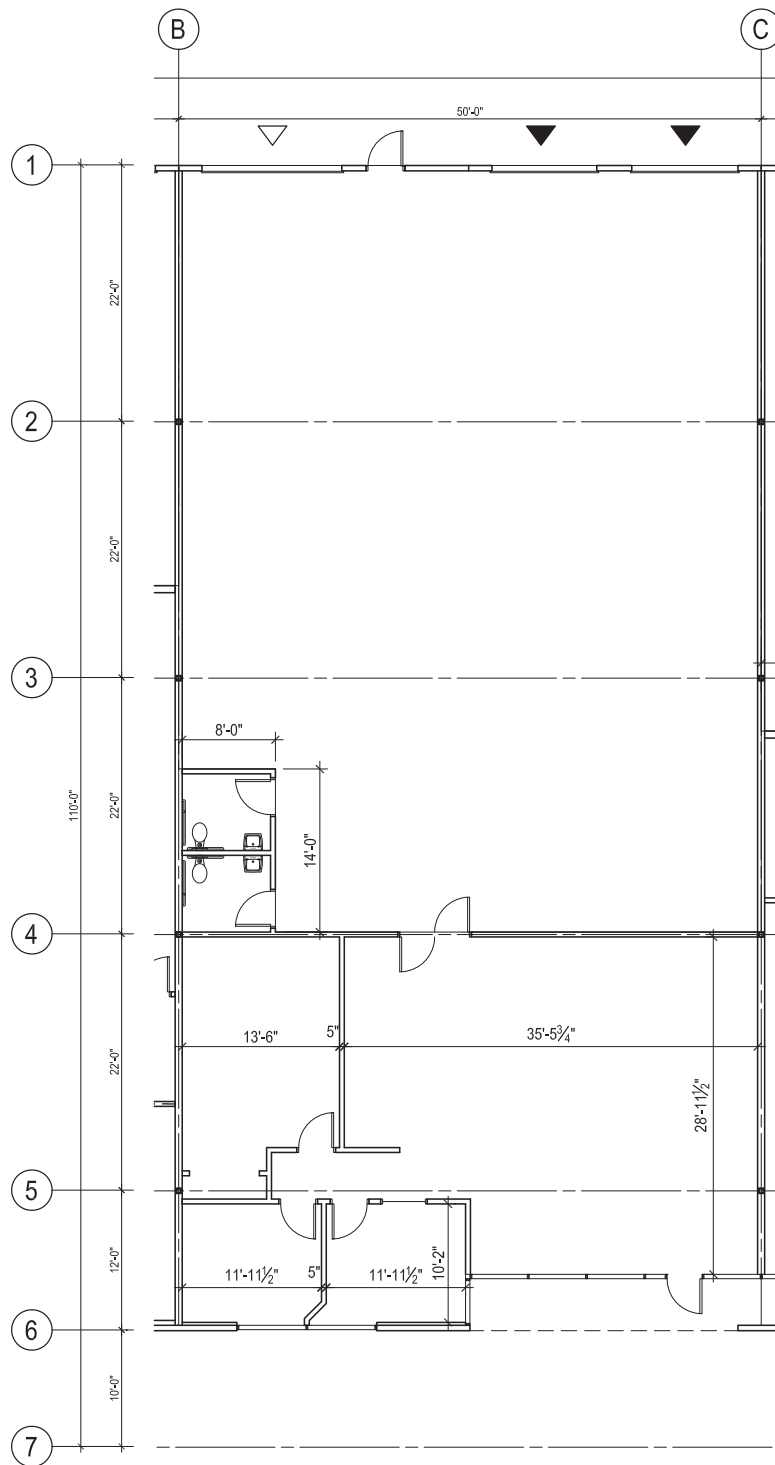
JEFF FORSBERG, CCIM
 Principal
 +1 425 586 5610
 jforsberg@nai-psp.com



THE INFORMATION CONTAINED HEREIN HAS BEEN GIVEN TO US BY THE OWNER OF THE PROPERTY OR OTHER SOURCES WE DEEM RELIABLE, WE HAVE NO REASON TO DOUBT ITS ACCURACY, BUT WE DO NOT GUARANTEE IT. ALL INFORMATION SHOULD BE VERIFIED PRIOR TO PURCHASE OR LEASE.

nai-psp.com

Floor Plan



KENT CHANNING
Partner
+1 425 586 5628
kchanning@nai-ppsp.com

JEFF FORSBERG, CCIM
Principal
+1 425 586 5610
jforsberg@nai-ppsp.com

