

# RIVERFRONT

## BUSINESS PARK

16110-16140 WOODINVILLE REDMOND RD NE, WOODINVILLE, WA

CLASS A LIGHT  
INDUSTRIAL BUILDINGS



**BRODERICK**  
• GROUP •

**CONNOR GILCHRIST**

425.274.4286

[gilchrist@broderickgroup.com](mailto:gilchrist@broderickgroup.com)

**RAWLEY HOLMBERG**

425.274.4284

[holmberg@broderickgroup.com](mailto:holmberg@broderickgroup.com)

**SAMSON TORO**

425.274.4289

[toro@broderickgroup.com](mailto:toro@broderickgroup.com)

# RIVERFRONT BUSINESS PARK

16110-16140 WOODINVILLE REDMOND RD NE, WOODINVILLE, WA

CLASS A LIGHT INDUSTRIAL BUILDINGS

## PROPERTY FEATURES

- Class A light industrial buildings
- 20' clear height
- Convenient Woodinville location
- Strategic access to SR 522 and I-405
- Experienced ownership
- Concrete tilt construction
- ESFR fire suppression
- Parking Ratio: 1.93 per 1,000 SF leased
- Restaurants and shopping center nearby



## SITE PLAN

BLDG	SUITE	TOTAL SF	OFFICE SF	WAREHOUSE SF	AVAILABILITY
16110	<u>SUITES 1001+1002</u>	5,300 RSF	1,056 RSF	4,244 RSF	Immediately
16120	<u>SUITE 2010</u>	3,440 RSF	1,526 RSF	1,914 RSF	Immediately
16140	<u>SUITES 4001+4002</u>	5,430 RSF	358 RSF	5,072 RSF	Immediately



**CONNOR GILCHRIST**  
425.274.4286  
[gilchrist@broderickgroup.com](mailto:gilchrist@broderickgroup.com)

**RAWLEY HOLMBERG**  
425.274.4284  
[holmberg@broderickgroup.com](mailto:holmberg@broderickgroup.com)

**SAMSON TORO**  
425.274.4289  
[toro@broderickgroup.com](mailto:toro@broderickgroup.com)

# RIVERFRONT BUSINESS PARK

16110-16140 WOODINVILLE REDMOND RD NE, WOODINVILLE, WA

CLASS A LIGHT INDUSTRIAL BUILDINGS

## BUILDING 16110 - SUITES 1001/1002 AVAILABLE IMMEDIATELY

TOTAL SF: 5,300 RSF

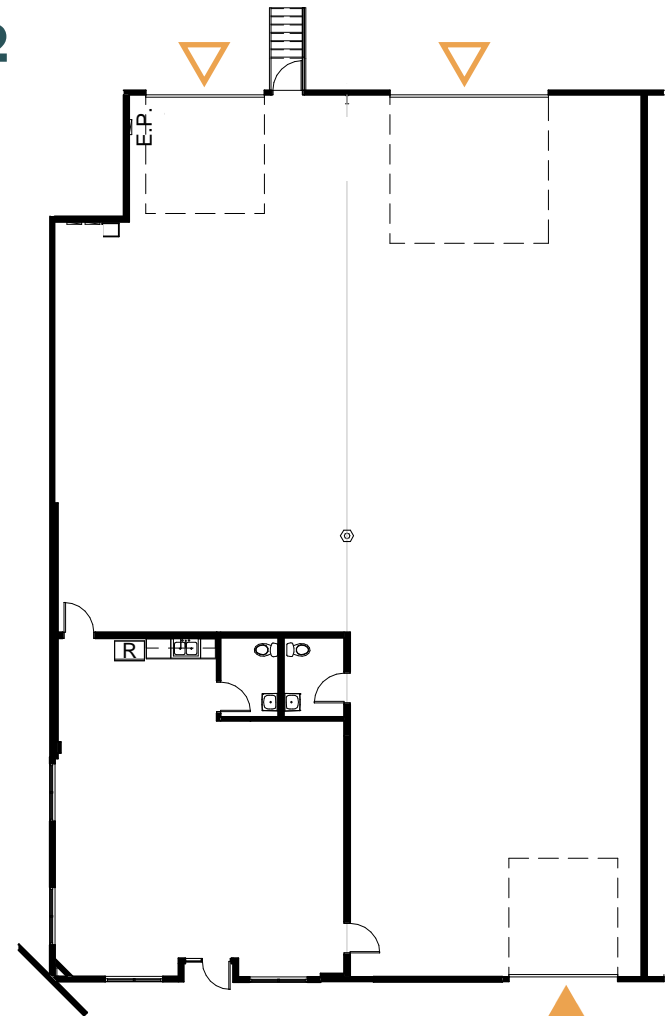
OFFICE SF: 1,056 RSF

WAREHOUSE SF: 4,244 RSF

CLEAR HEIGHT: 20'

LOADING: ONE GRADE LEVEL DOOR  
TWO DOCK HIGH DOORS

*The information contained herein has been given to us by the owner or sources that we deem reliable. We have no reason to doubt its accuracy, but we do not guarantee it. Prospective tenants should carefully verify all information contained herein.*



▲ GRADE LEVEL  
△ DOCK HIGH

↑ BACK TO AVAILABLE SPACE

**BRODERICK**  
• GROUP •

**CONNOR GILCHRIST**  
425.274.4286  
[gilchrist@broderickgroup.com](mailto:gilchrist@broderickgroup.com)

**RAWLEY HOLMBERG**  
425.274.4284  
[holmberg@broderickgroup.com](mailto:holmberg@broderickgroup.com)

**SAMSON TORO**  
425.274.4289  
[toro@broderickgroup.com](mailto:toro@broderickgroup.com)

# RIVERFRONT BUSINESS PARK

16110-16140 WOODINVILLE REDMOND RD NE, WOODINVILLE, WA

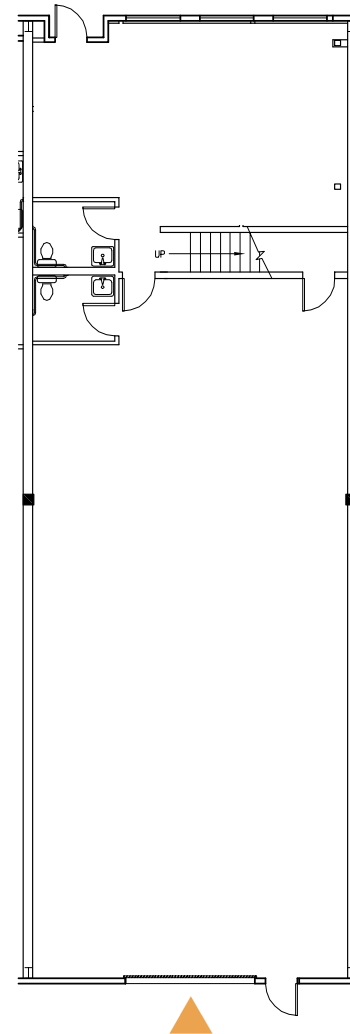
CLASS A LIGHT INDUSTRIAL BUILDINGS

## BUILDING 16120 - SUITE 2010

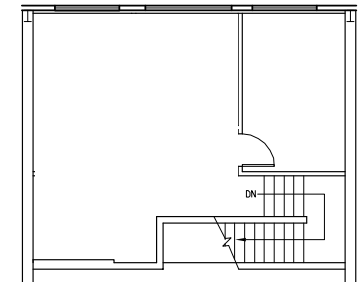
AVAILABLE IMMEDIATELY

TOTAL SF:	3,440 RSF
OFFICE SF:	1,520 RSF
WAREHOUSE SF:	1,920 RSF
CLEAR HEIGHT:	20'
LOADING:	ONE GRADE LEVEL DOOR

*The information contained herein has been given to us by the owner or sources that we deem reliable. We have no reason to doubt its accuracy, but we do not guarantee it. Prospective tenants should carefully verify all information contained herein.*



2ND FLOOR OFFICE



↑ BACK TO AVAILABLE SPACE



**CONNOR GILCHRIST**  
425.274.4286  
[gilchrist@broderickgroup.com](mailto:gilchrist@broderickgroup.com)

**RAWLEY HOLMBERG**  
425.274.4284  
[holmberg@broderickgroup.com](mailto:holmberg@broderickgroup.com)

**SAMSON TORO**  
425.274.4289  
[toro@broderickgroup.com](mailto:toro@broderickgroup.com)



# RIVERFRONT BUSINESS PARK

16110-16140 WOODINVILLE REDMOND RD NE, WOODINVILLE, WA

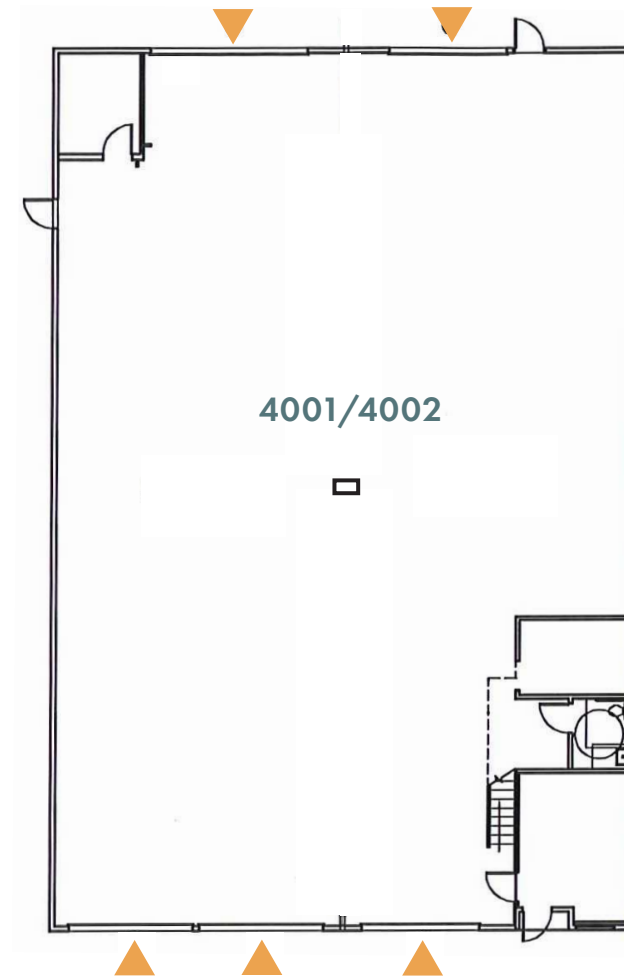
CLASS A LIGHT INDUSTRIAL BUILDINGS

## BUILDING 16140 - SUITE 4001/4002

AVAILABLE IMMEDIATELY

TOTAL SF:	5,430 RSF
OFFICE SF:	358 RSF
WAREHOUSE SF:	5,072 RSF
CLEAR HEIGHT:	20'
LOADING:	FIVE GRADE LEVEL DOORS

*The information contained herein has been given to us by the owner or sources that we deem reliable. We have no reason to doubt its accuracy, but we do not guarantee it. Prospective tenants should carefully verify all information contained herein.*



[↑ BACK TO AVAILABLE SPACE](#)



**CONNOR GILCHRIST**  
425.274.4286  
[gilchrist@broderickgroup.com](mailto:gilchrist@broderickgroup.com)

**RAWLEY HOLMBERG**  
425.274.4284  
[holmberg@broderickgroup.com](mailto:holmberg@broderickgroup.com)

**SAMSON TORO**  
425.274.4289  
[toro@broderickgroup.com](mailto:toro@broderickgroup.com)

# RIVERFRONT BUSINESS PARK

CLASS A LIGHT INDUSTRIAL BUILDINGS

16110-16140 WOODINVILLE REDMOND RD NE, WOODINVILLE, WA



**BRODERICK**  
• GROUP •

**CONNOR GILCHRIST**  
425.274.4286  
[gilchrist@broderickgroup.com](mailto:gilchrist@broderickgroup.com)

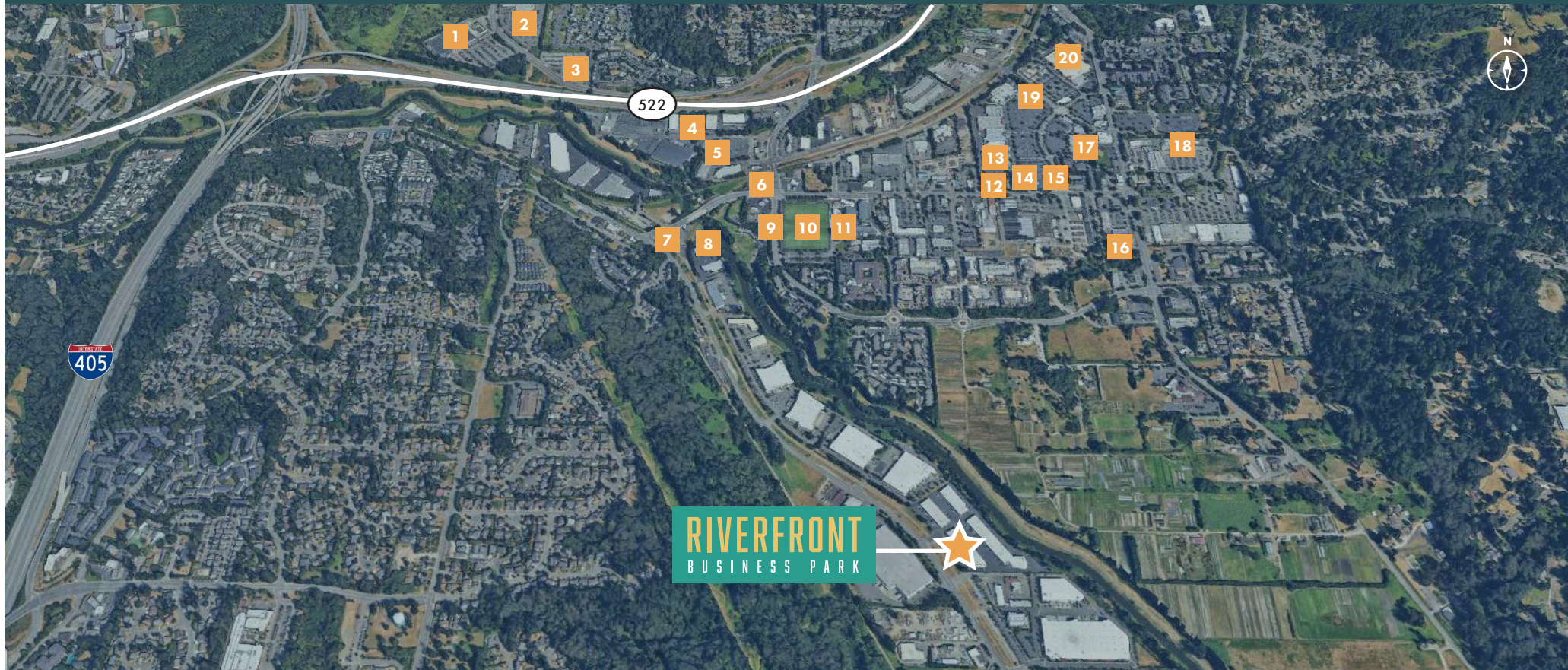
**RAWLEY HOLMBERG**  
425.274.4284  
[holmberg@broderickgroup.com](mailto:holmberg@broderickgroup.com)

**SAMSON TORO**  
425.274.4289  
[toro@broderickgroup.com](mailto:toro@broderickgroup.com)

# RIVERFRONT BUSINESS PARK

CLASS A LIGHT INDUSTRIAL BUILDINGS

16110-16140 WOODINVILLE REDMOND RD NE, WOODINVILLE, WA



- 1 The Home Depot
- 2 Starbucks
- 3 24 Hour Fitness
- 4 Crucible Brewing
- 5 US Post Office

- 6 McLendon's Hardware
- 7 Cut Shop Restaurant
- 8 Mercury Coffee Shop
- 9 Jack in the Box
- 10 Woodinville Play Fields

- 11 The Schoolhouse District
- 12 FedEx Shipping Center
- 13 Haggen Food & Pharmacy
- 14 Panera Bread
- 15 Chipotle

- 16 McDonalds
- 17 AMC Theatres Woodinville
- 18 Woodinville Park & Ride
- 19 Red Robin Gourmet Burgers
- 20 Target



**CONNOR GILCHRIST**  
425.274.4286  
[gilchrist@broderickgroup.com](mailto:gilchrist@broderickgroup.com)

**RAWLEY HOLMBERG**  
425.274.4284  
[holmberg@broderickgroup.com](mailto:holmberg@broderickgroup.com)

**SAMSON TORO**  
425.274.4289  
[toro@broderickgroup.com](mailto:toro@broderickgroup.com)