



FOR LEASE



14,406 SF



AVAILABLE
NOW

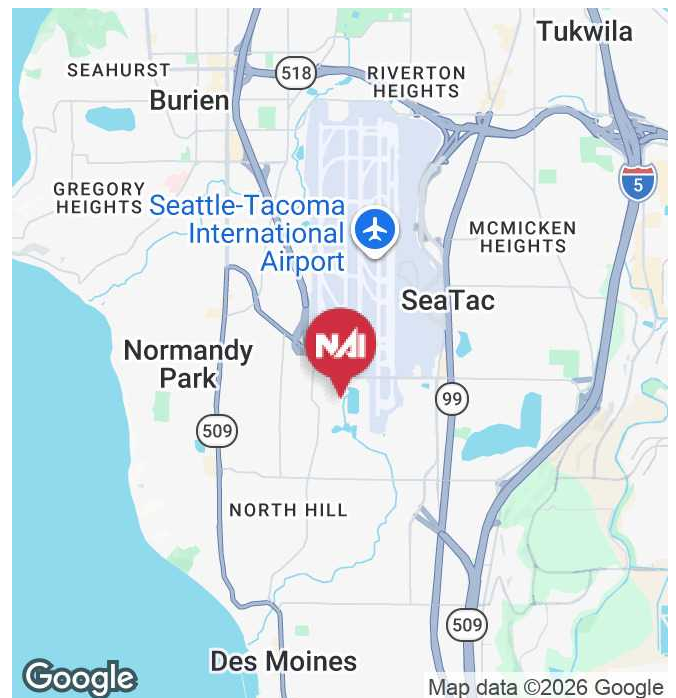


16th Avenue Industrial Building

18915 16th Ave S SeaTac, WA 98188

Property Highlights

- 14,406 SF available (5,324 SF office located on two floors)
- 5 DH & 3 GL door
- 23' clear height
- Lease Rate:
 - \$1.00 PSF, NNN Shell
 - \$1.25 PSF office add on
 - NNN = \$0.3825 PSF
- Can be combined with adjacent space to create 32,438 SF facility
- Available now



Kent Channing

Partner | 425.586.5628

kchanning@nai-pp.com

Arie Salomon, SIOR, CCIM

Principal | 425.586.5636

asalomon@nai-pp.com



<https://www.nai-pp.com>

THE INFORMATION SUPPLIED HEREIN IS FROM SOURCES WE DEEM RELIABLE. IT IS PROVIDED WITHOUT ANY REPRESENTATION, WARRANTY OR GUARANTEE, EXPRESSED OR IMPLIED, AS TO ITS ACCURACY. PROSPECTIVE BUYER OR TENANT SHOULD CONDUCT AN INDEPENDENT INVESTIGATION AND VERIFICATION OF ALL MATTERS DEEMED TO BE MATERIAL, INCLUDING, BUT NOT LIMITED TO, STATEMENTS OF INCOME AND EXPENSES. CONSULT YOUR ATTORNEY, ACCOUNTANT OR OTHER PROFESSIONAL ADVISOR.



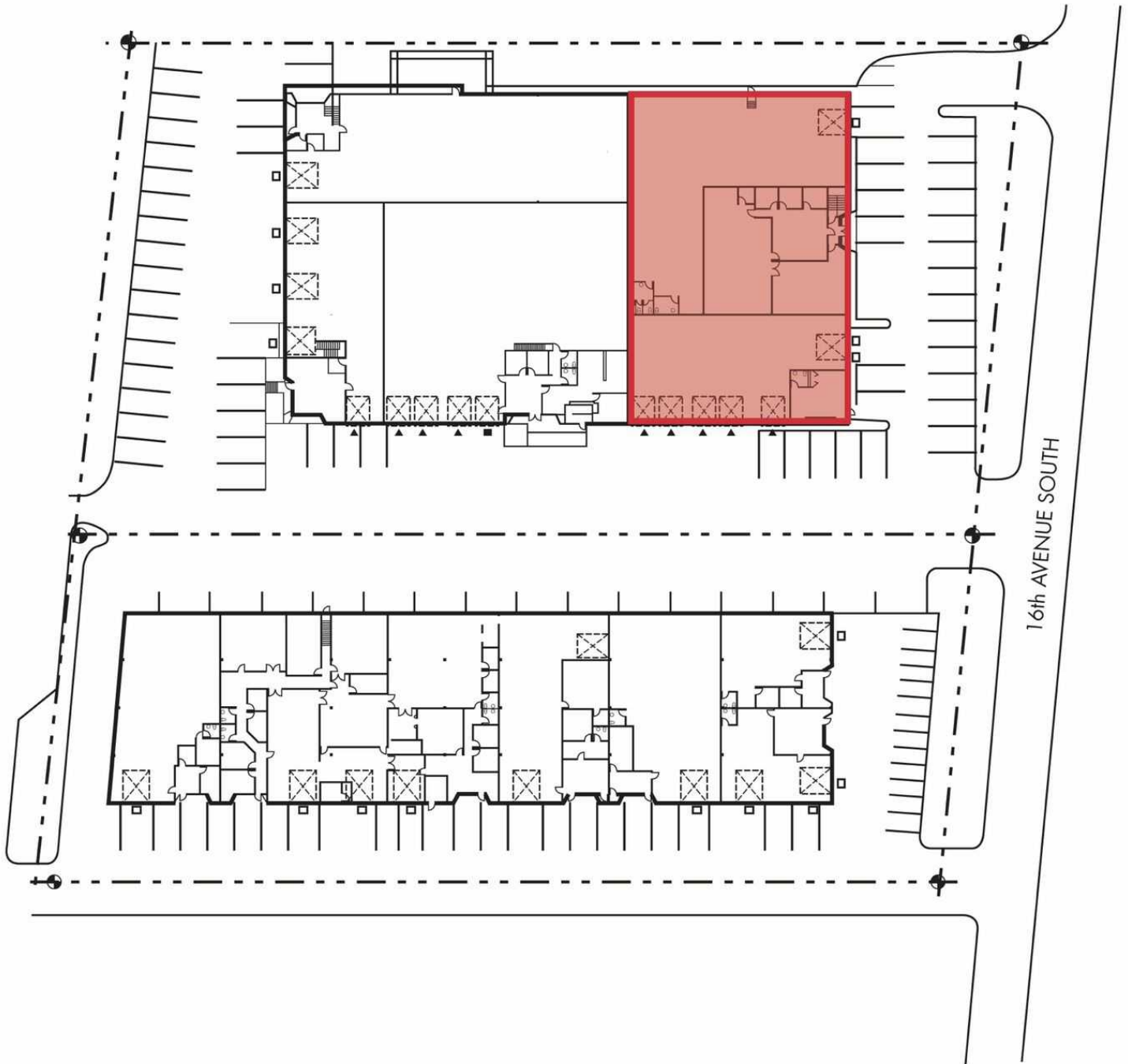
FOR LEASE



14,406 SF



AVAILABLE
NOW



Kent Channing

Partner | 425.586.5628

kchanning@nai-pp.com

Arie Salomon, SIOR, CCIM

Principal | 425.586.5636

asalomon@nai-pp.com



<https://www.nai-pp.com>

THE INFORMATION SUPPLIED HEREIN IS FROM SOURCES WE DEEM RELIABLE. IT IS PROVIDED WITHOUT ANY REPRESENTATION, WARRANTY OR GUARANTEE, EXPRESSED OR IMPLIED, AS TO ITS ACCURACY. PROSPECTIVE BUYER OR TENANT SHOULD CONDUCT AN INDEPENDENT INVESTIGATION AND VERIFICATION OF ALL MATTERS DEEMED TO BE MATERIAL, INCLUDING, BUT NOT LIMITED TO, STATEMENTS OF INCOME AND EXPENSES. CONSULT YOUR ATTORNEY, ACCOUNTANT OR OTHER PROFESSIONAL ADVISOR.