

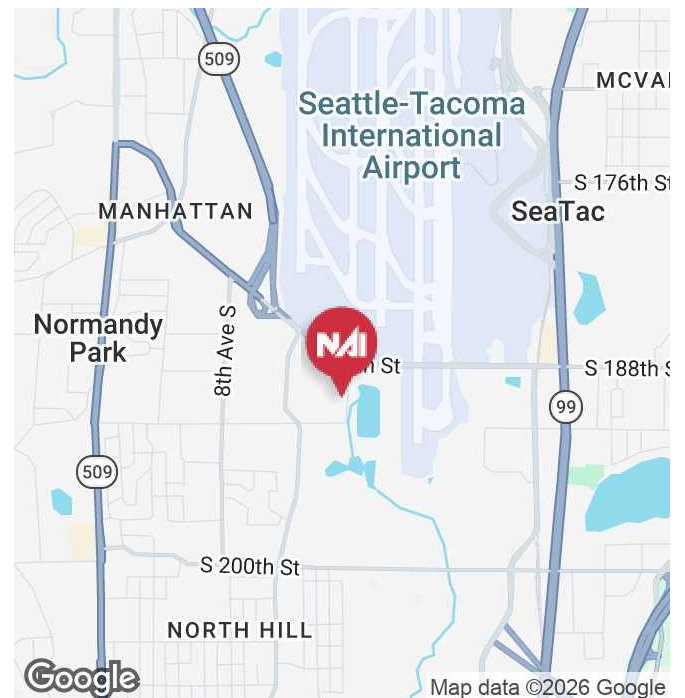


16th Avenue Industrial Building

19003 & 19005 16th Ave S
SeaTac, Washington 98188

Property Highlights

- 4,250 SF available (847 SF office)
- End cap space
- 3 GL loading doors
- 16' clear height
- Available October 1, 2026
- New asphalt in loading & parking areas
- Lease rate: \$1.05 PSF, NNN (shell), \$1.25 office add on
- NNN = \$0.3825 PSF



Kent Channing

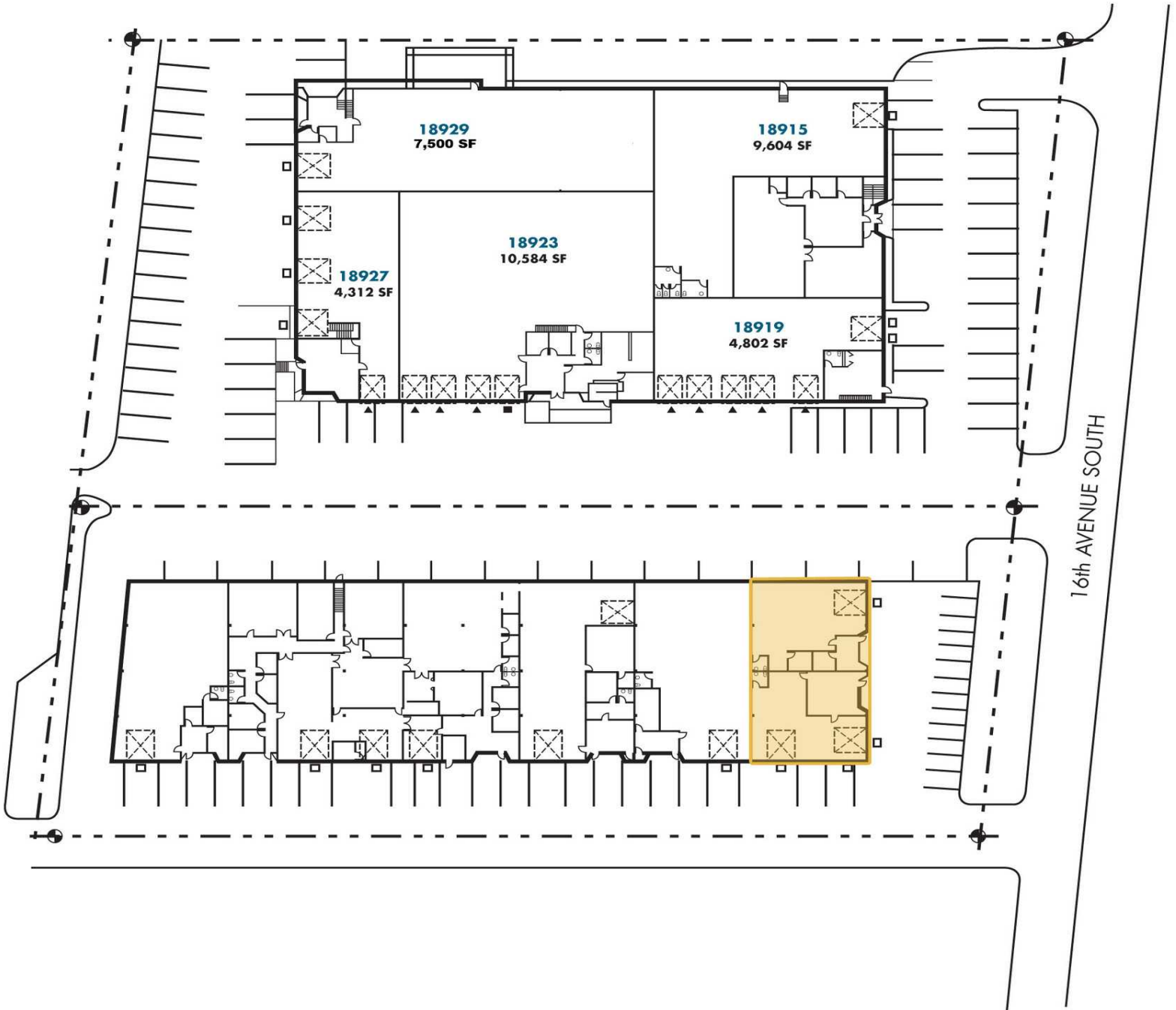
Partner | 425.586.5628

kchanning@nai-psp.com

Arie Salomon, SIOR, CCIM

Principal | 425.586.5636

asalomon@nai-psp.com



LEGEND

- ▲ DOCK-HIGH DOOR
- GRADE-LEVEL DOOR



Kent Channing
 Partner | 425.586.5628
 kchanning@nai-psp.com

Arie Salomon, SIOR, CCIM
 Principal | 425.586.5636
 asalomon@nai-psp.com

