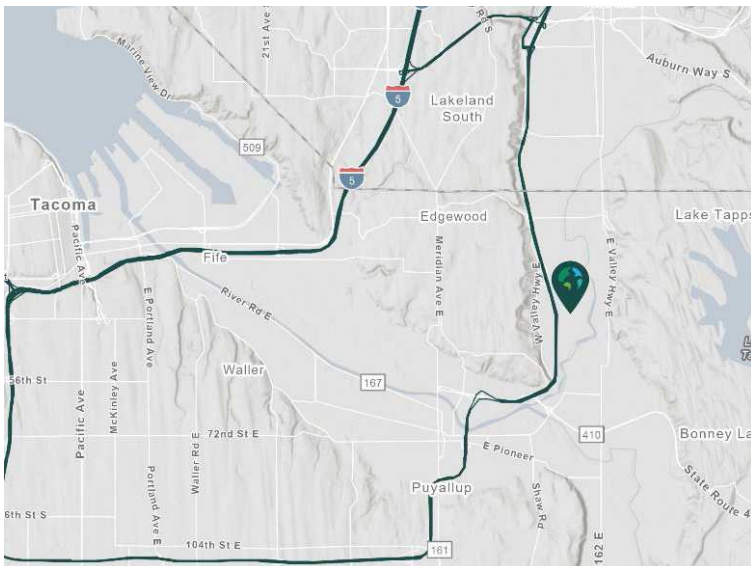


# 147,289 SF

**3012 142nd Avenue East  
Sumner, WA 98390**

Prologis Park Sumner 1



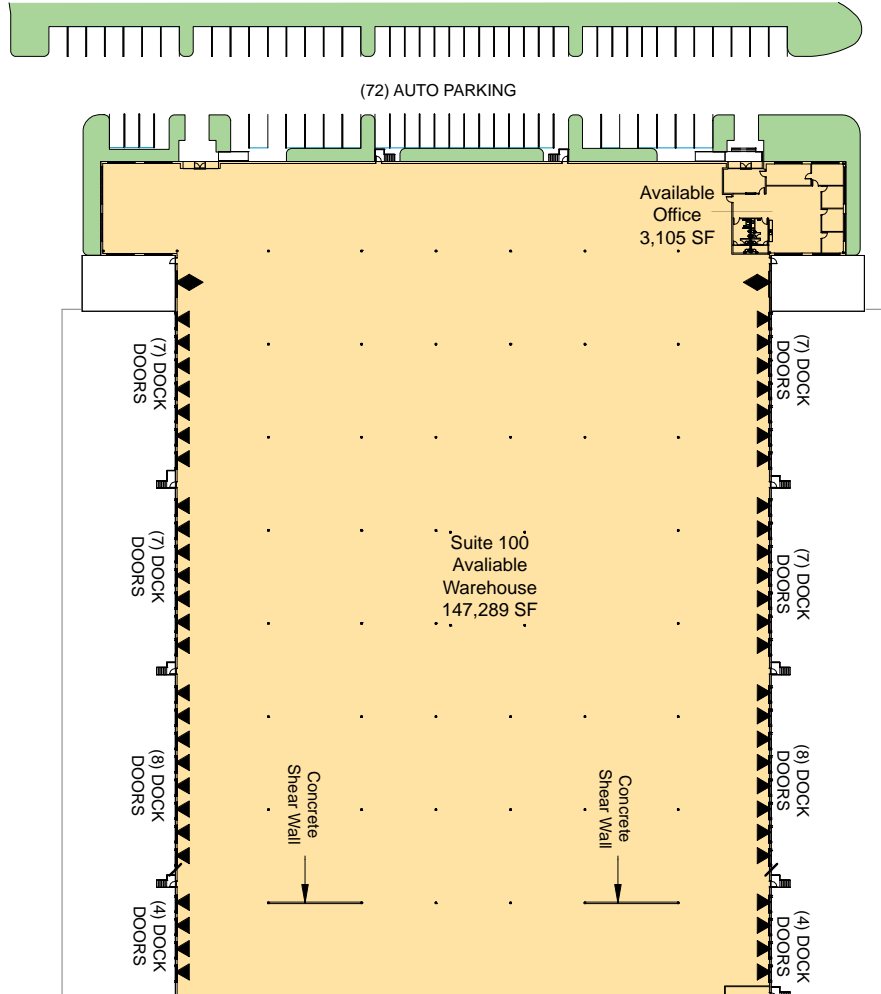
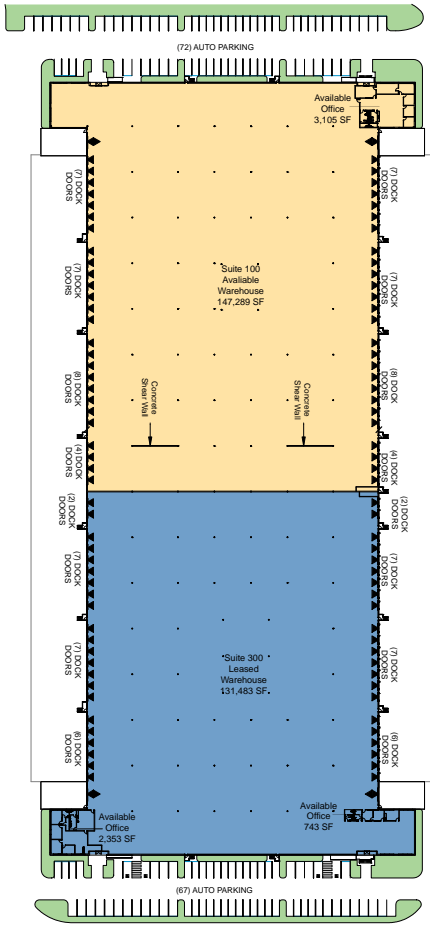
- Located in Prologis Park Sumner.
- Approx 12 miles to Port of Tacoma.
- Visibility to 142nd Street.
- Direct access to SR-167 via 24th Street.
- Prologis owned and operated.

## Property Features

Space Size	147,289 SF
Office SF	3,105 SF
Clear Height	30'
Column Spacing	50' x 50'
Dock Doors	52
Drive-in Doors	2
Car Parking Spaces	139
Truck Court	180' & 161'
Yard	±2.45 Acre
Suite 100 Occupancy	Available Now



Unlock the full potential of your warehouse with one strategic, single-source partner.



**LEGEND**

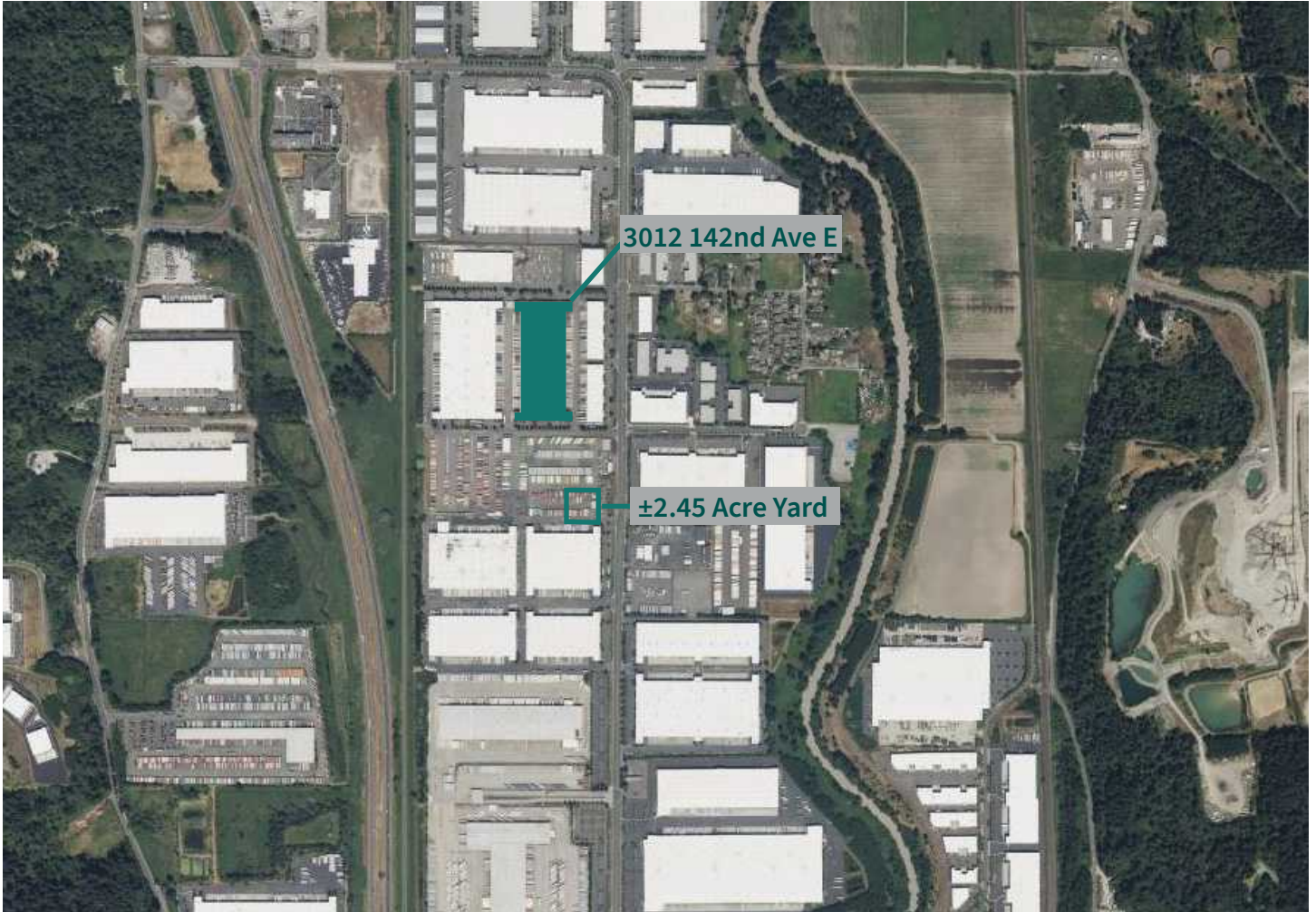
- ▲ DOCK DOOR
- ◆ DRIVE-IN DOOR
- AVAILABLE
- LEASED
- LAND

**HIGHLIGHTS**

- Shell: 147,289 SF
- Office: 3,105 SF
- Warehouse: 144,184 SF
- Clear Height: 30'
- Dock High Doors: 52
- Grade Level Doors: 2
- ±2.45 Acre Yard
- Available Now



Unlock the full potential of your  
warehouse with one strategic,  
single-source partner.



# CBRE

CBRE, Inc  
John Gilliland  
john.gilliland@cbre.com  
ph +1 206 442 2745

CBRE, Inc  
John Sullivan  
john.sullivan@cbre.com  
ph +1 206 442 2744

Prologis  
Michelle Weeks  
mweeks@prologis.com  
ph +1 206 600 0315  
prologis.com