

# Broadway Professional Building

921 W Broadway Ave, Spokane, WA



OFFICE SPACE  
FOR LEASE



JONES LANG LASALLE BROKERAGE, INC. RE LIC. #01856260



921 W BROADWAY AVE

# ABOUT THE BUILDING



THREE STORY  
CLASS B BUILDING



BUILDING SIZE  
11,859 SF



BUILDING  
CONFERENCE ROOM



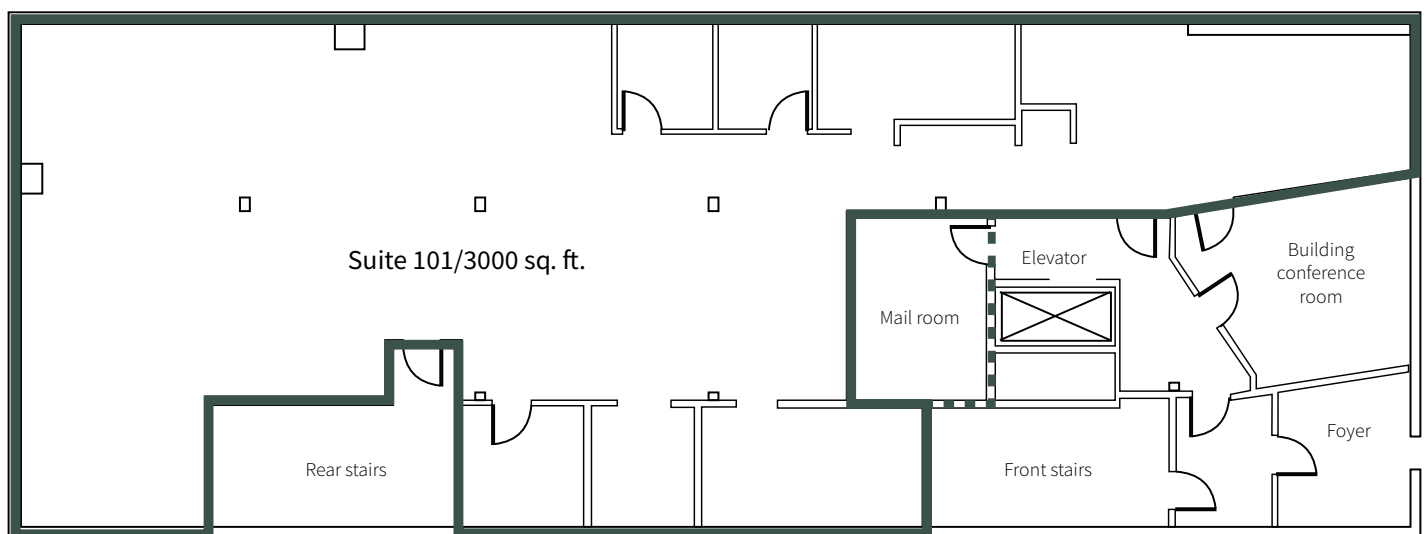
LARGE FRONT  
WINDOWS



HISTORIC MEETS  
MODERN

# 921 W Broadway Ave Spokane, WA

## SUITE 101



**AVAILABLE: 3,000 RENTABLE SQ. FT**

# Broadway Professional Building

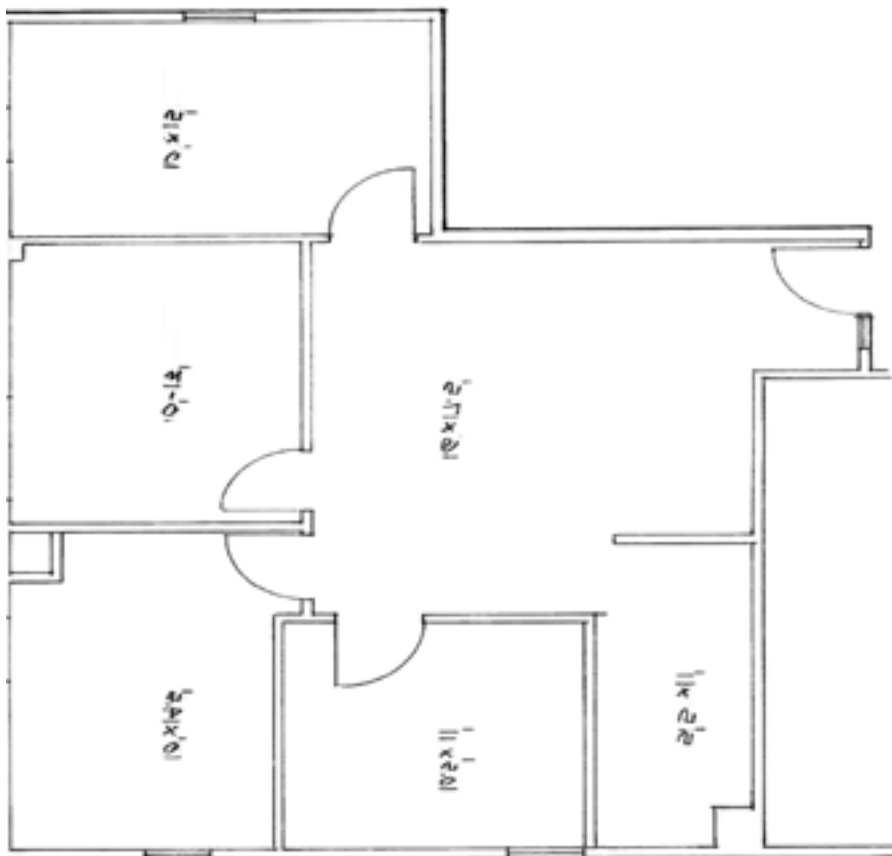
SUITE 205A



**AVAILABLE: 144 RENTABLE SQ. FT**

# Broadway Professional Building

**SUITE 305**



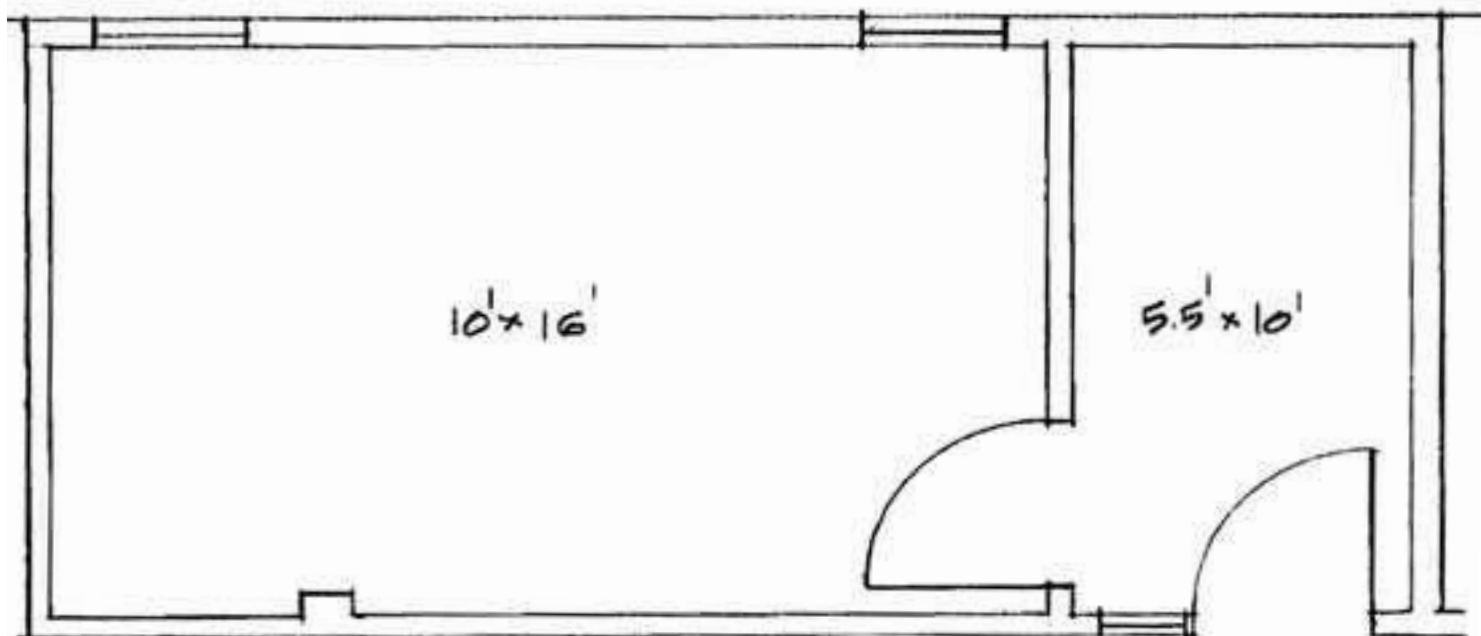
**AVAILABLE: 1,130 RENTABLE SQ. FT**

\*Floor plan not drawn to scale



# Broadway Professional Building

## SUITE 305A

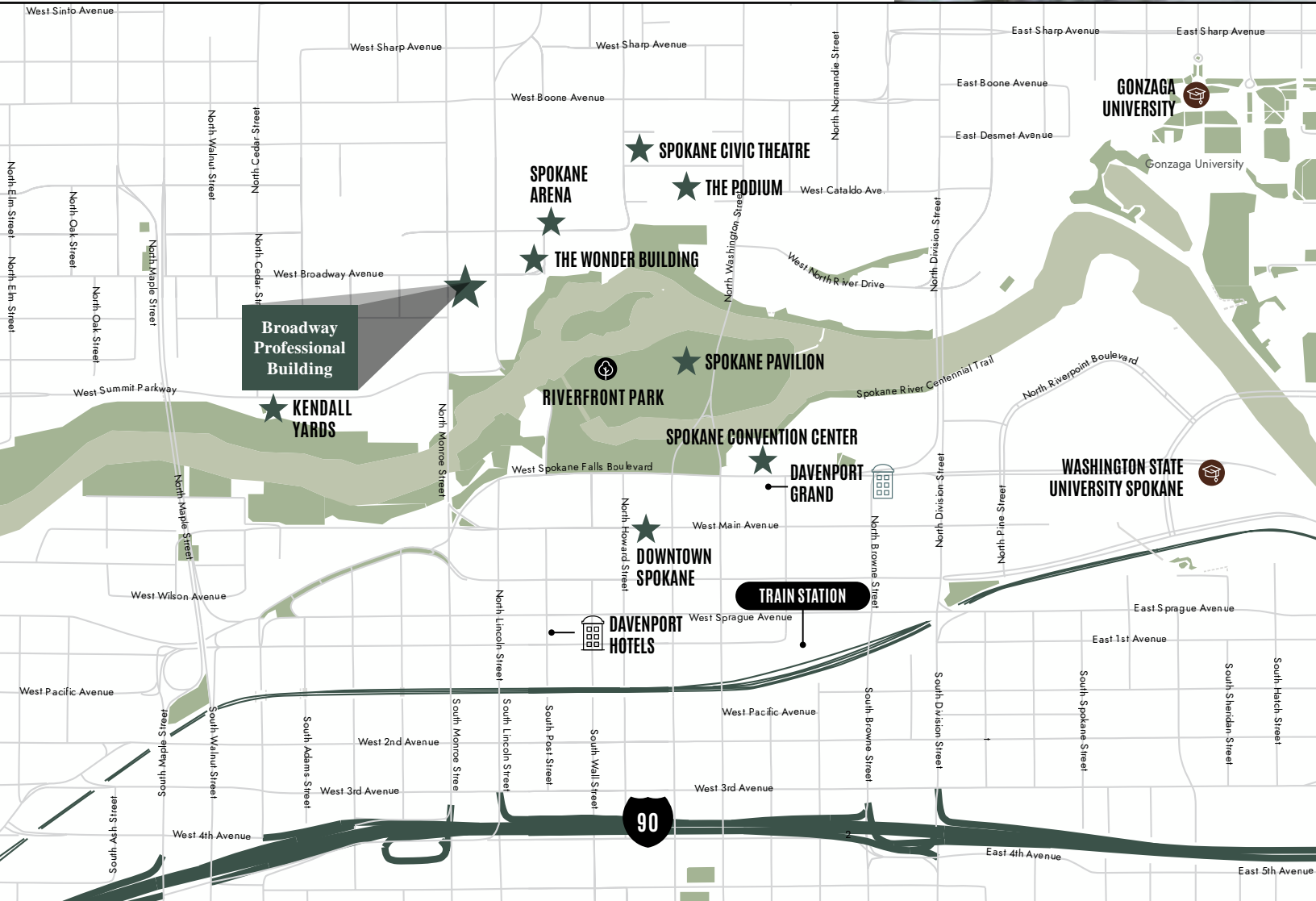


\*Floor plan not drawn to scale

**AVAILABLE: 269 RENTABLE SQ. FT**

# TAP INTO YOUR NEIGHBORHOOD

The location within the North Bank business district offers a multitude of shopping, dining, and entertainment venues as well as easy access to the redeveloped Riverfront Park, sportsplexes and future soccer stadium.



## CONTACT

**Michael Sharapata**  
Senior Managing Director  
+1 509 822 -0088  
michael.sharapata@jll.com  
RE License #26565

**Jared Smith**  
Vice President  
+1 509 505 7459  
j.smith@jll.com  
RE License #20118285



Although information has been obtained from sources deemed reliable, JLL does not make any guarantees, warranties or representations, express or implied, as to the completeness or accuracy as to the information contained herein. Any projections, opinions, assumptions or estimates used are for example only. There may be differences between projected and actual results, and those differences may be material. JLL does not accept any liability for any loss or damage suffered by any party resulting from reliance on this information. If the recipient of this information has signed a confidentiality agreement with JLL regarding this matter, this information is subject to the terms of that agreement. ©2025. Jones Lang LaSalle IP, Inc. All rights reserved.