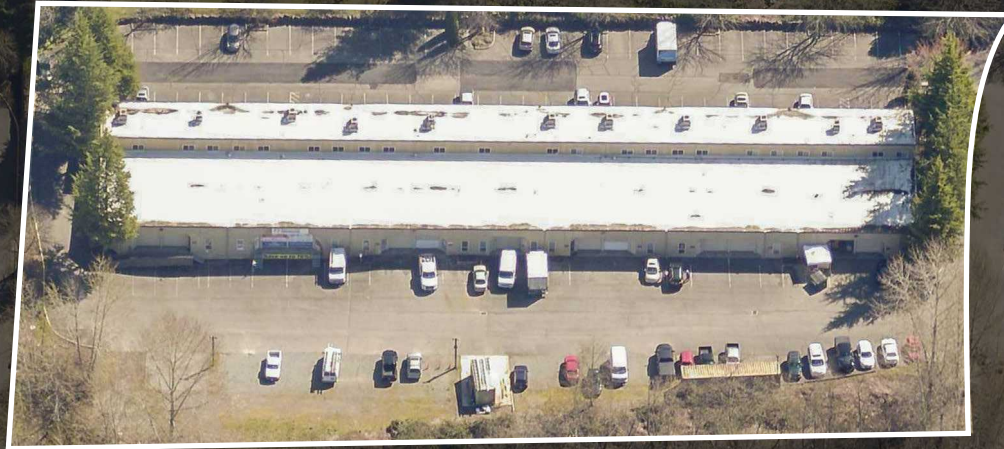


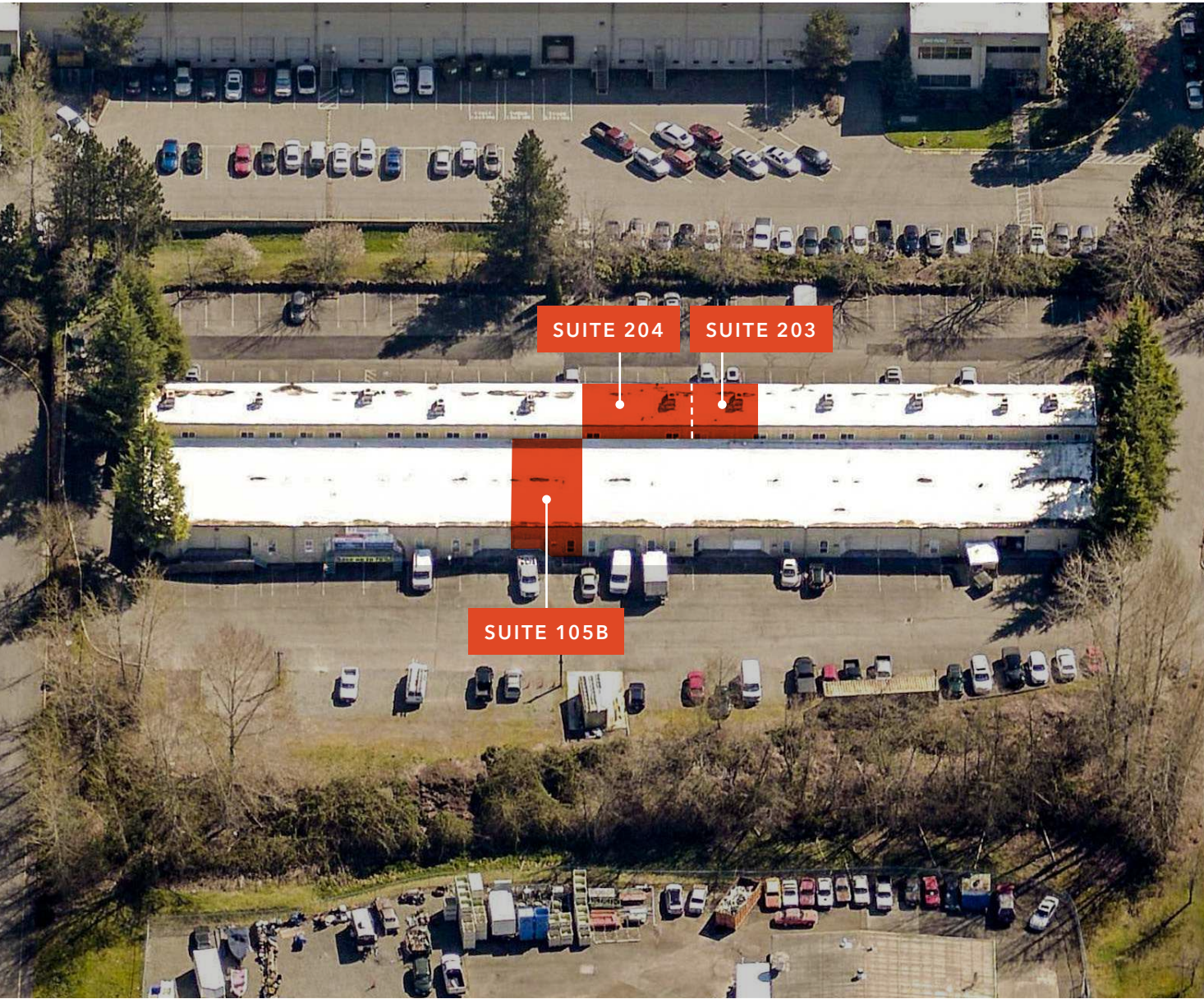
FOR LEASE

NORTHSHORE TRADES BLDG

*3,483 SF of Flex and Office
Space Available*

14522 NE NORTH WOODINVILLE WAY
WOODINVILLE, WA





Features

Abundant parking

Fully sprinklered

Grade-level loading door

Close proximity to amenities

Quick access to SR-522 and I-405

Suites 203 and 204 can be leased separately or can be combined

Contact brokers for lease rates

JAMES LEPTICH

425.450.1159

james.leptich@kidder.com

RYAN FOSTER

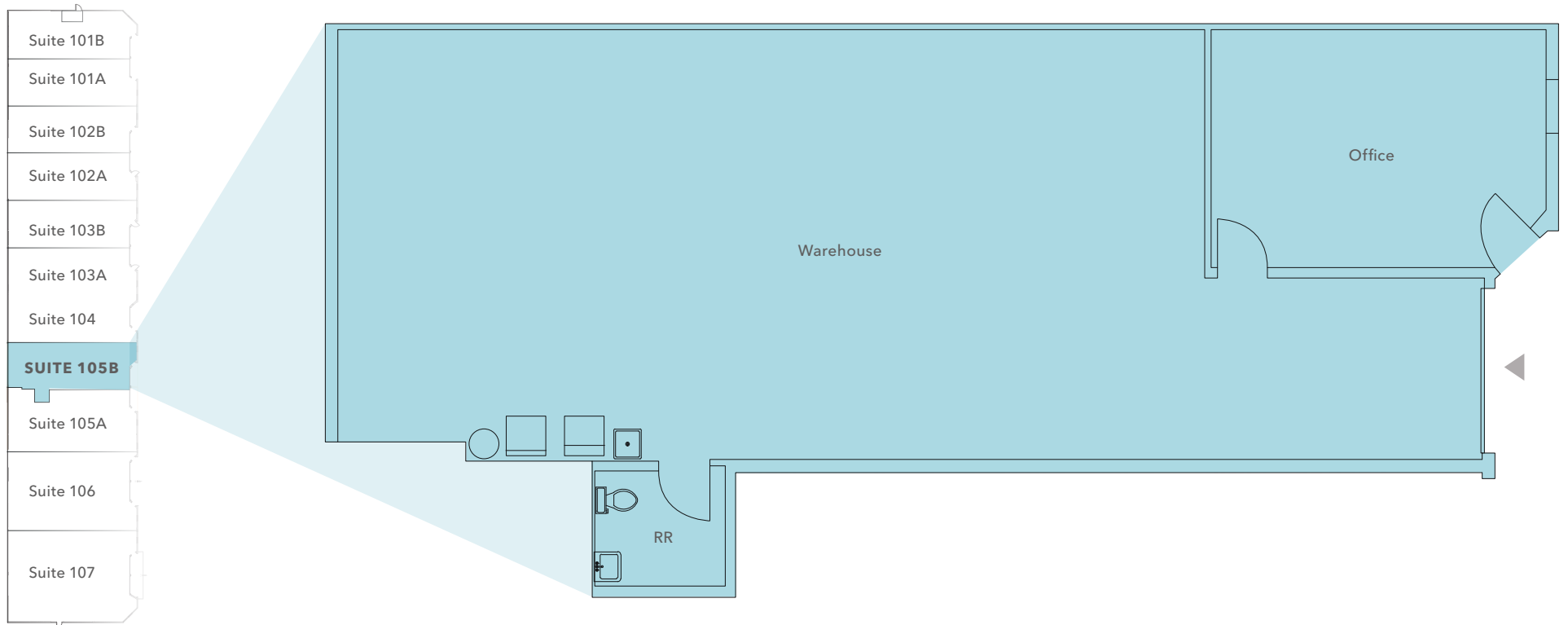
425.450.1124

ryan.foster@kidder.com

NORTHSHORE TRADES BLDG



SUITE 105B - FLOOR PLAN



1,905 SF

TOTAL AREA

290 SF

OFFICE AREA

1,615 SF

WAREHOUSE AREA

GRADE

LEVEL LOADING

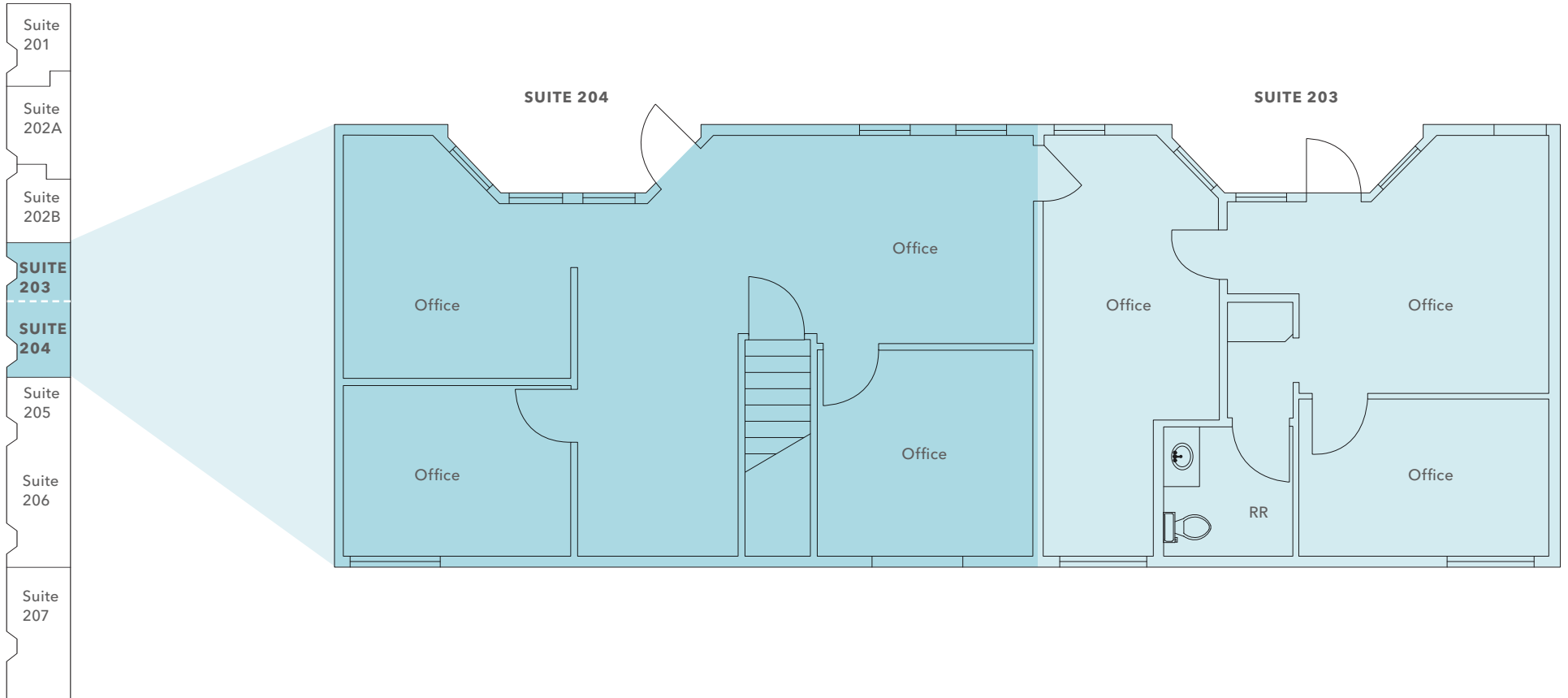
8/1/26

AVAILABLE



▲ Grade-level loading

SUITE 203/204 - FLOOR PLAN



909 SF

SUITE 204 AREA

669 SF

SUITE 203 AREA

1,578 SF

TOTAL AREA

11/1/26

AVAILABLE

CALL

BROKER FOR RATES



DEMOGRAPHICS

POPULATION

	1 Mile	3 Miles	5 Miles
2010 CENSUS	5,976	48,092	157,275
2020 CENSUS	6,504	57,404	190,809
2025 ESTIMATED	6,738	58,912	196,810
2030 PROJECTED	6,734	58,834	197,321

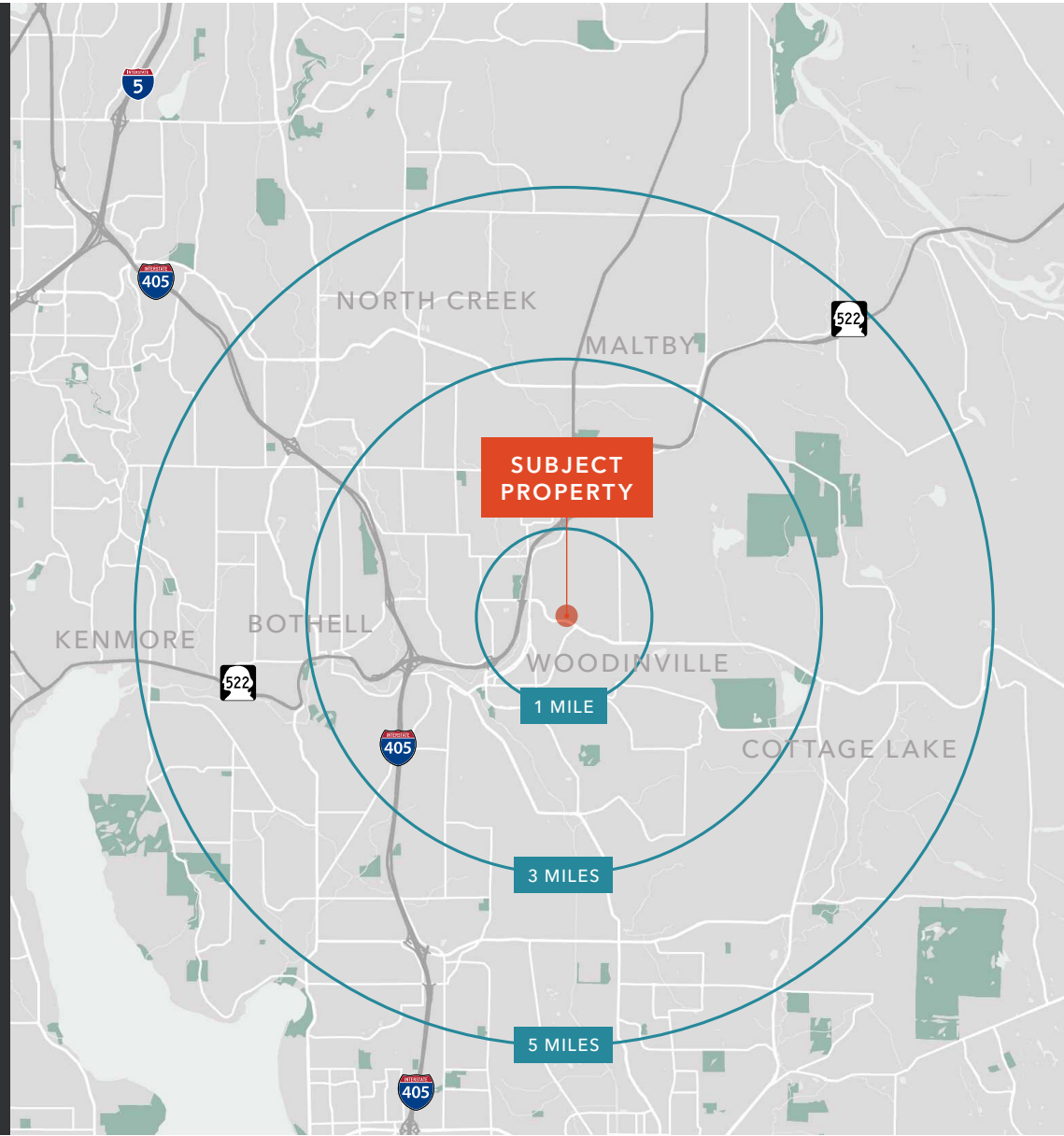
MEDIAN AGE & GENDER

	1 Mile	3 Miles	5 Miles
MEDIAN AGE	38.2	38.7	38.0
% FEMALE	51%	50.1%	50.0%
% MALE	49%	49.9%	50.0%

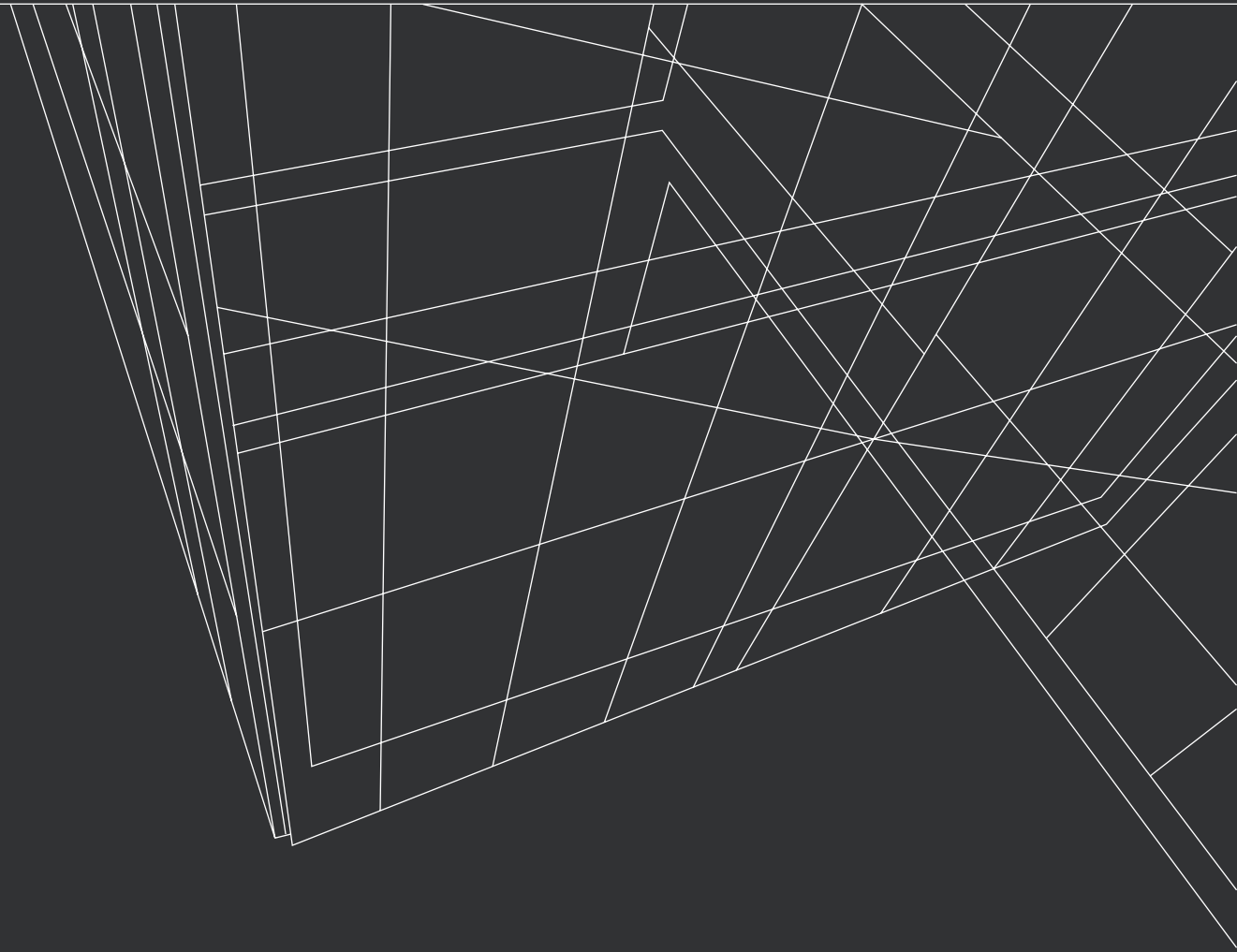
HOUSEHOLD INCOME

	1 Mile	3 Miles	5 Miles
2025 MEDIAN	\$147,375	\$167,526	\$166,232
2030 MEDIAN PROJECTED	\$147,375	\$168,089	\$165,708
2025 AVERAGE	\$191,286	\$214,369	\$213,452
2030 AVERAGE PROJECTED	\$191,505	\$215,654	\$213,540

Data Source: ©2026, Sites USA



NORTHSHORE TRADES BLDG



For more information, contact

JAMES LEPTICH

425.450.1159

james.leptich@kidder.com

RYAN FOSTER

425.450.1124

ryan.foster@kidder.com

KIDDER.COM

This information supplied herein is from sources we deem reliable. It is provided without any representation, warranty, or guarantee, expressed or implied as to its accuracy. Prospective Buyer or Tenant should conduct an independent investigation and verification of all matters deemed to be material, including, but not limited to, statements of income and expenses. Consult your attorney, accountant, or other professional advisor.

