



FOR LEASE

Glen Haven

5116 196th St SW, Lynnwood, WA

*Recently renovated suite for lease in
Lynnwood retail/office center.*

PROPERTY HIGHLIGHTS

Suite 201:

- + Size: 1,600 SF
- + 2 Private Offices
- + Recently Renovated
- + Ability to convert to medical
- + Close access to highway
- + Lease Rate: \$28/SF plus NNN

Annex Building:

- + Size: 412 SF
- + Lease Rate: \$1,500/mo

MATT LE

Associate
+1 425 586 5647
mle@nai-psp.com



THE INFORMATION CONTAINED HEREIN HAS BEEN GIVEN TO US BY THE OWNER OF THE PROPERTY OR OTHER SOURCES WE DEEM RELIABLE, WE HAVE NO REASON TO DOUBT ITS ACCURACY, BUT WE DO NOT GUARANTEE IT. ALL INFORMATION SHOULD BE VERIFIED PRIOR TO PURCHASE OR LEASE.

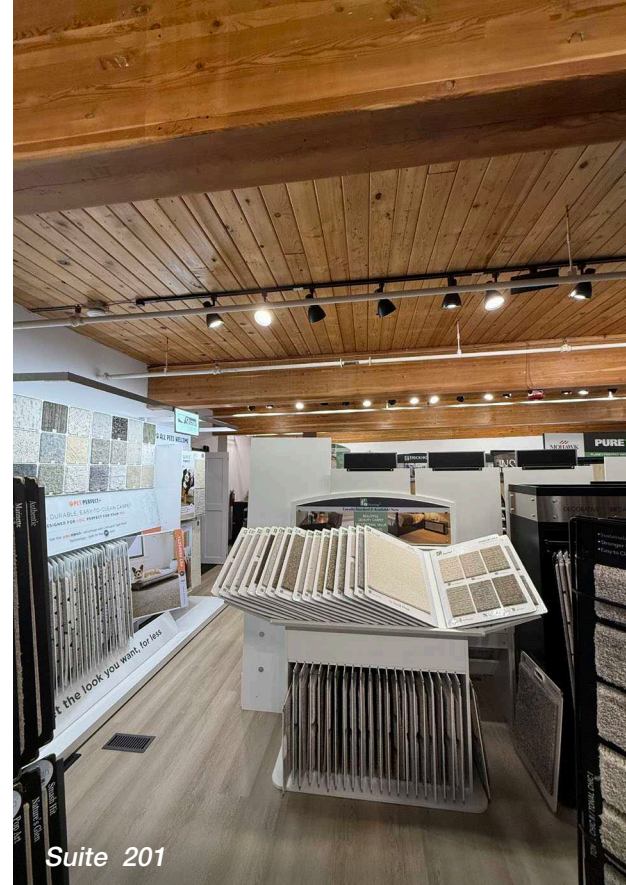


nai-psp.com



Space for lease in
Lynnwood

**This image has been modified from its original form*



Suite 201



Suite 201



Suite 201

MATT LE
Associate
+1 425 586 5647
mle@nai-psp.com

