

# LARRABEE SQUARE

1050 Larrabee Ave., Bellingham, WA 98225



Holli Abelson, Property Asset Manager

(360) 483-1907 | [Holli@PCRNw.com](mailto:Holli@PCRNw.com)

Commercial Sales | Leasing | Management

114 W. Magnolia St., Bellingham, WA 98225 | [www.PacificContinentalRealty.com](http://www.PacificContinentalRealty.com)

*Information contained herein has been obtained from sources that we deem reliable. We have no reason to doubt its accuracy, but we do not guarantee it.*

# THE OFFERING



Suite 207: 289 SF

Base Rent: \$24.71 SF/Y

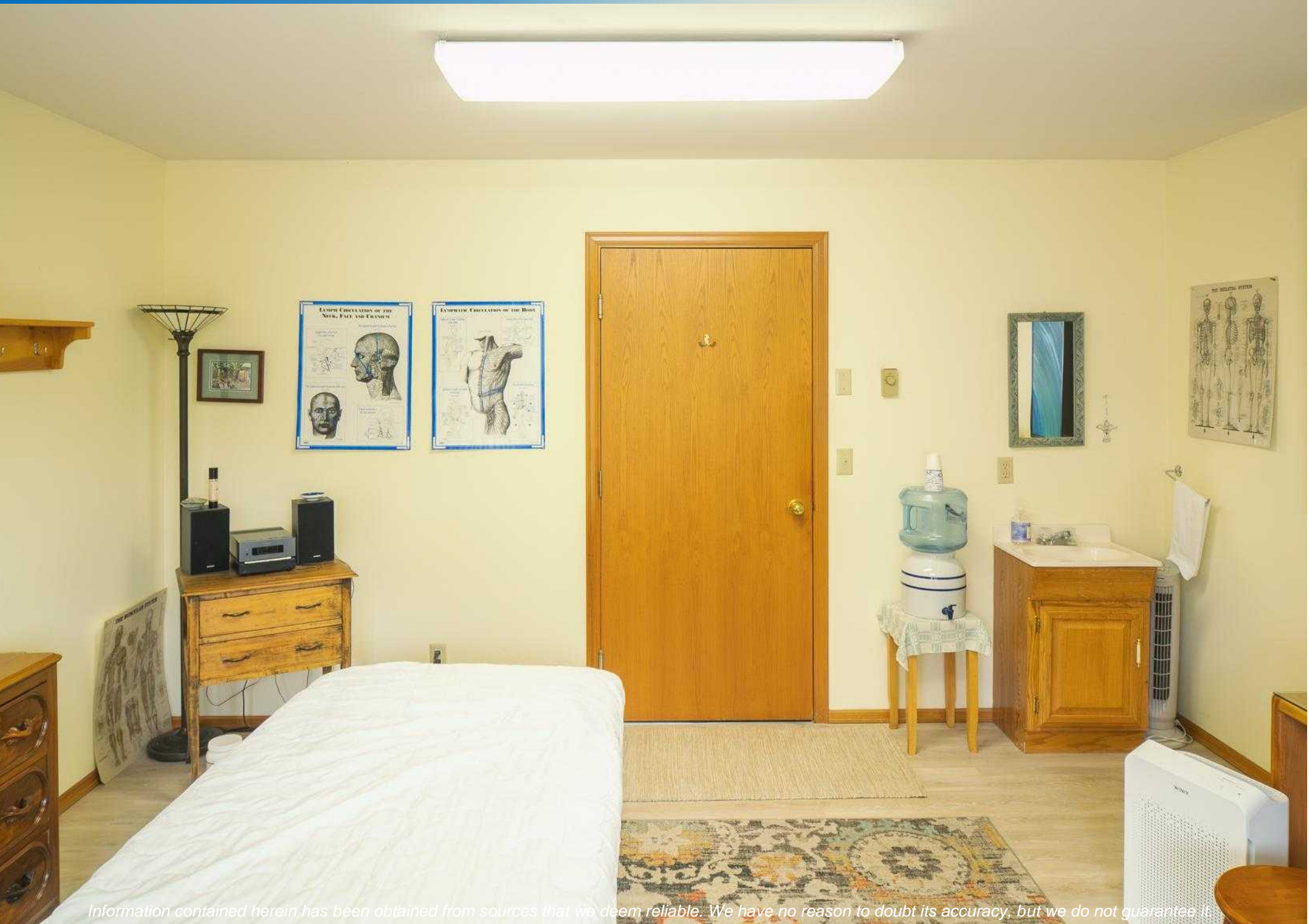
Est. NNN: \$7.29 SF/Y

Base Rent + NNN = \$770.54 / Per Month

CBA #: 45018081

Highly sought after single office space available in Fairhaven. Located on second level of Larrabee Square (ADA access from back of building), this suite shares only one wall with neighboring suite offering privacy. All Tenants are health practitioners, Landlord prefers this use. Common area breakroom with kitchenette and bathroom. Suite has baseboard heat and wall mounted AC unit. There are two areas in common area for clients to wait. Larrabee Square has its own parking lot with ADA spaces in back of building.

# SUITE 207



Information contained herein has been obtained from sources that we deem reliable. We have no reason to doubt its accuracy, but we do not guarantee it.

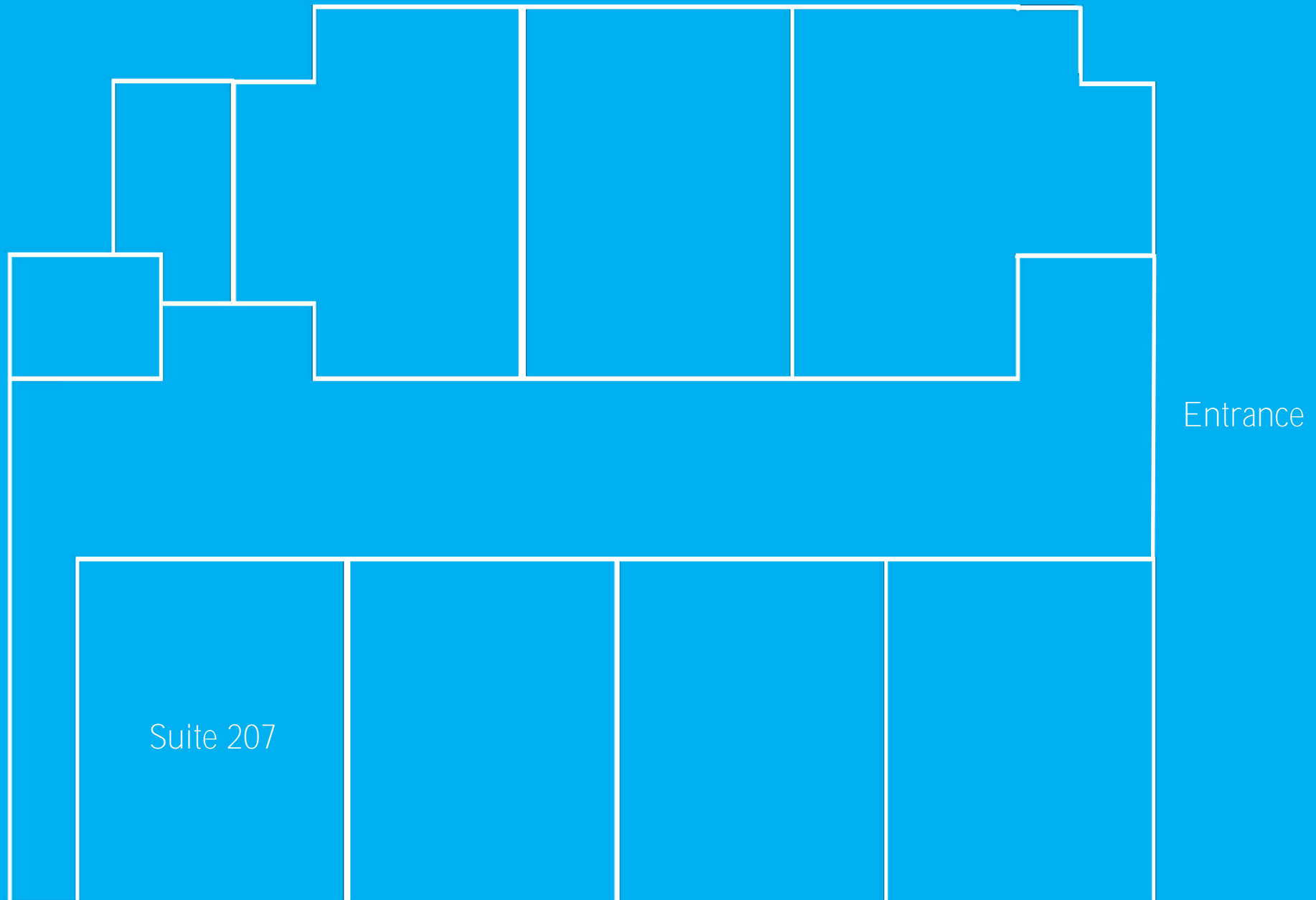
# SUITE 207



*Information contained herein has been obtained from sources that we deem reliable. We have no reason to doubt its accuracy, but we do not guarantee it.*

# SUITE 201 - 289 SF

Suite 201 at Larrabee Square is a modest 289 SF office suite. Perfect for professionals who require a small, intimate and controlled environment to best serve their clients.



# LOCATION DETAILS



Downtown Fairhaven

1 minute

Waterfront

2 minutes

I-5 Exits 250

5 minutes

*Information contained herein has been obtained from sources that we deem reliable. We have no reason to doubt its accuracy, but we do not guarantee it.*

# LARRABEE SQUARE

1050 Larrabee Ave., Bellingham, WA 98225

Holli Abelson, Property Asset Manager

(360) 483-1907 | [Holli@PCRnw.com](mailto:Holli@PCRnw.com)



Commercial Sales | Leasing | Management

114 W. Magnolia St., Bellingham, WA 98225 | [www.PacificContinentalRealty.com](http://www.PacificContinentalRealty.com)

*Information contained herein has been obtained from sources that we deem reliable. We have no reason to doubt its accuracy, but we do not guarantee it.*