

BELLEVUE BUSINESS PARK

1940, 2000 & 2100 124TH AVE NE | BELLEVUE, WA



BELLEVUE BUSINESS PARK

2000-2100 124TH AVE NE | BELLEVUE, WA

AVAILABILITY

BUILDING A

| Suite | SF | Rental Rate | Available Date |
|----------------|-------|----------------------------|----------------|
| 102/103 | 3,320 | \$26/SF/Yr + \$10.52/SF/Yr | Now |

BUILDING C

| Suite | SF | Rental Rate | Available Date |
|------------|-------|----------------------------|----------------|
| 203 | 1,732 | \$26/SF/Yr + \$10.52/SF/Yr | Now |

2100 BUILDING

| Suite | SF | Rental Rate | Available Date |
|------------|-------|----------------------------|----------------|
| 120 | 2,083 | \$26/SF/Yr + \$13.69/SF/Yr | 7/1/2026 |
| 112 | 3,810 | \$26/SF/Yr + \$13.69/SF/Yr | Now |
| 100 | 2,756 | \$26/SF/Yr + \$13.69/SF/Yr | Now |

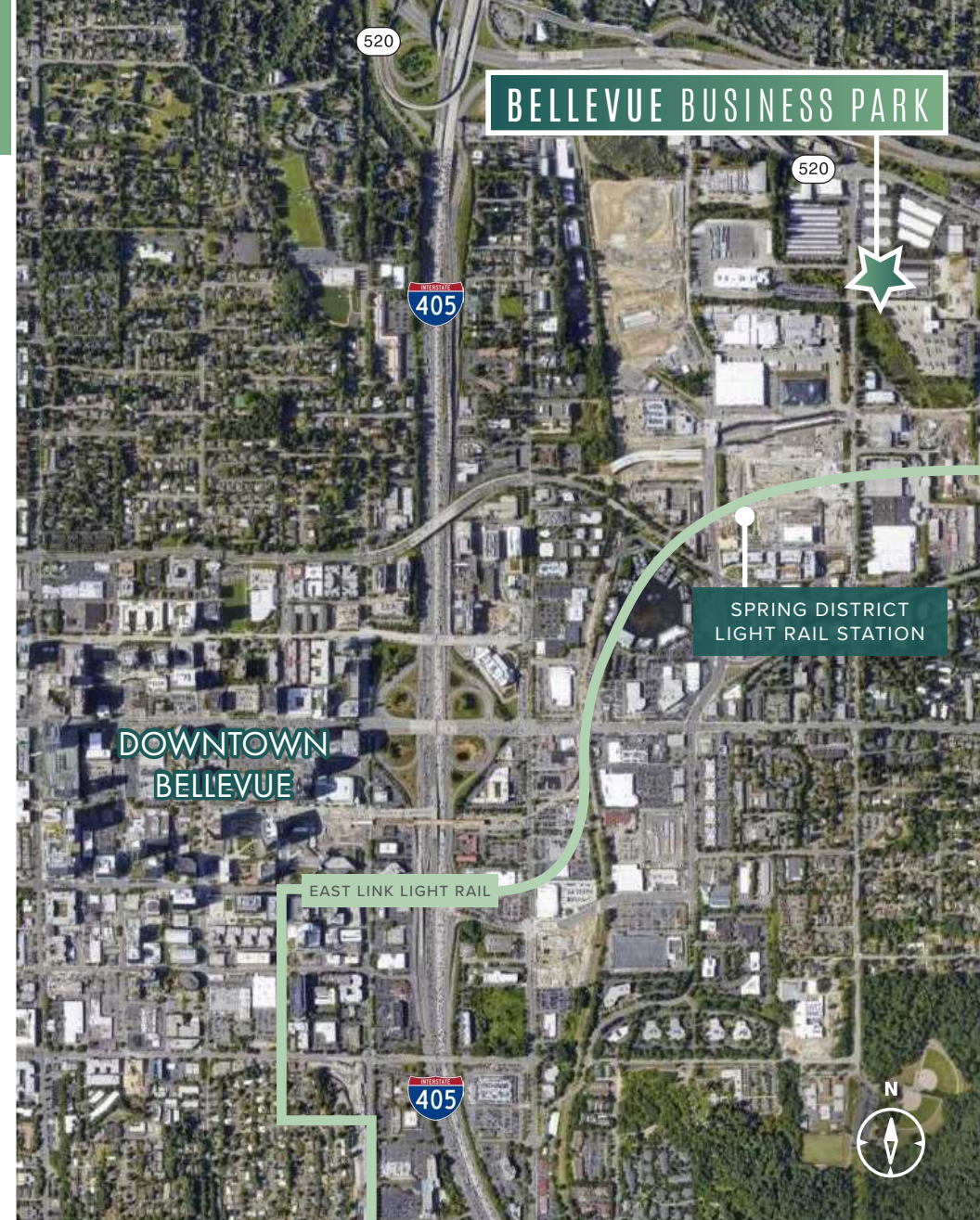
BUILDING FEATURES

Building A, Building B & Building C NNN: \$10.52/SF/Year

2100 Building NNN: \$13.69/SF/Year

Great Bel-Red Corridor location directly off of SR-520 with easy access from Downtown Bellevue, Redmond, Kirkland, and Seattle

Ample Parking: Approx. 2-3/1,000 Free



5 MINUTES
TO DOWNTOWN BELLEVUE

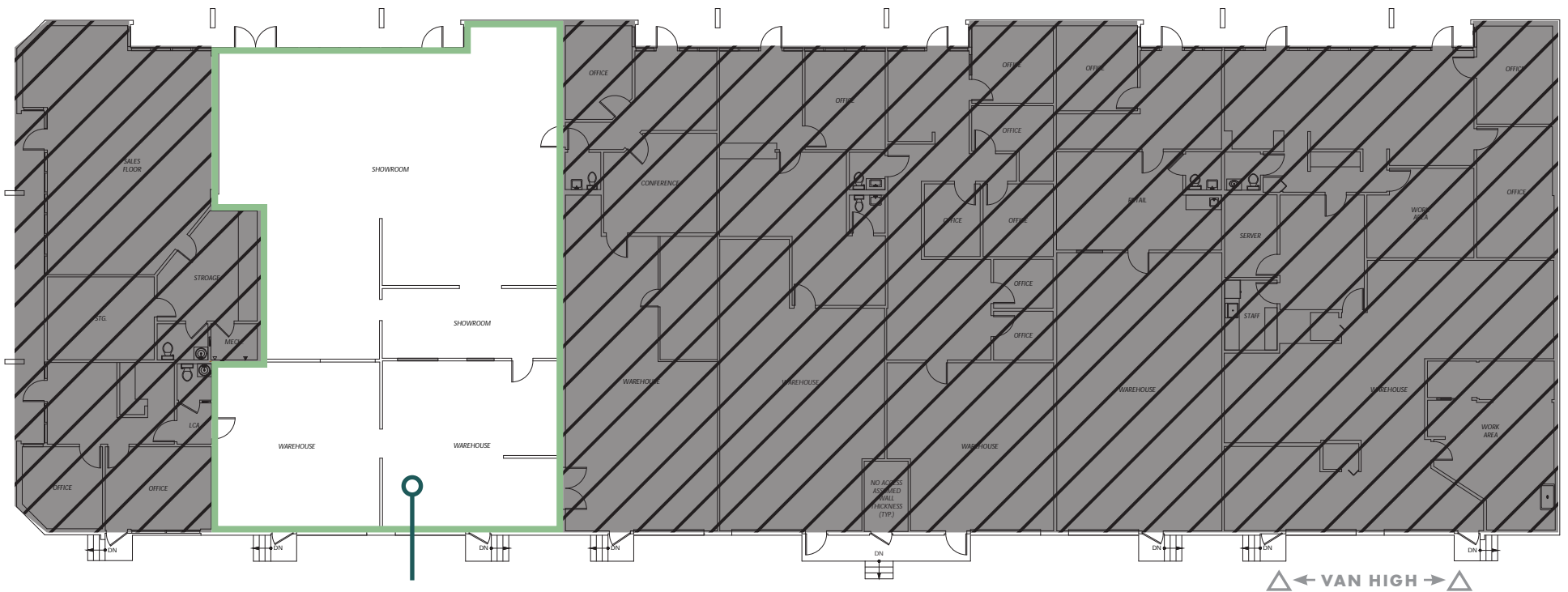
2 BLOCKS
TO FUTURE LINK LIGHT RAIL

The information contained herein has been given to us by the owner or sources which we deem reliable. We have no reason to doubt its accuracy, but we do not guarantee it. Prospective tenants should carefully verify all information contained herein.

BELLEVUE BUSINESS PARK

1940 124TH AVE NE | BELLEVUE, WA

BUILDING A



SUITE 102/103 | 3,320 SF

Available Now

[↑ BACK TO AVAILABLE SPACE](#)

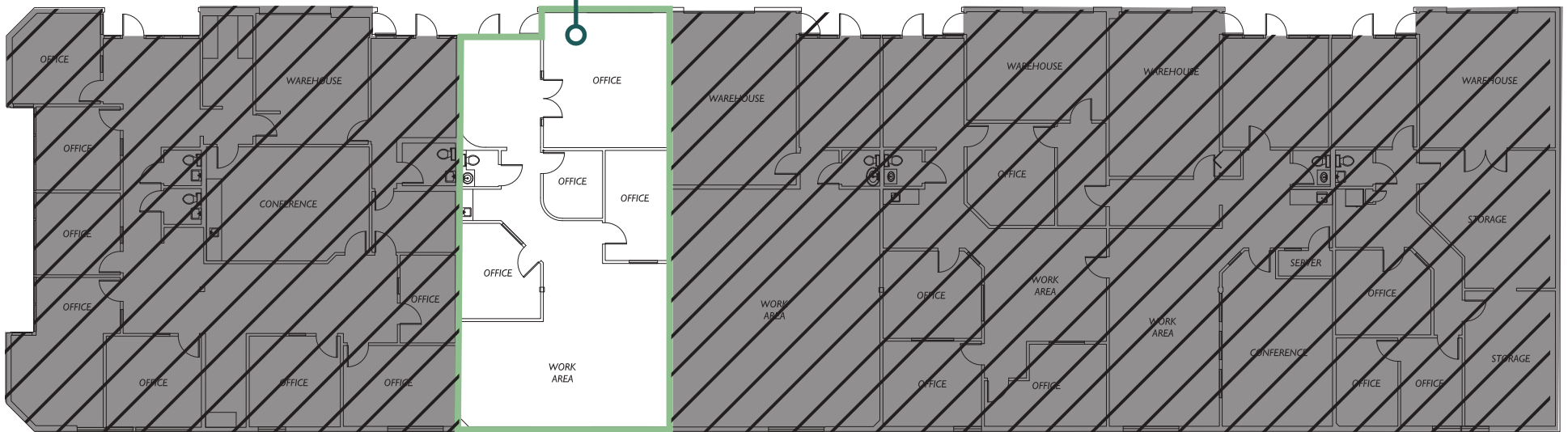
BELLEVUE BUSINESS PARK

2000 124TH AVE NE | BELLEVUE, WA

BUILDING C

SUITE 203 | 1,732 SF

Available Now



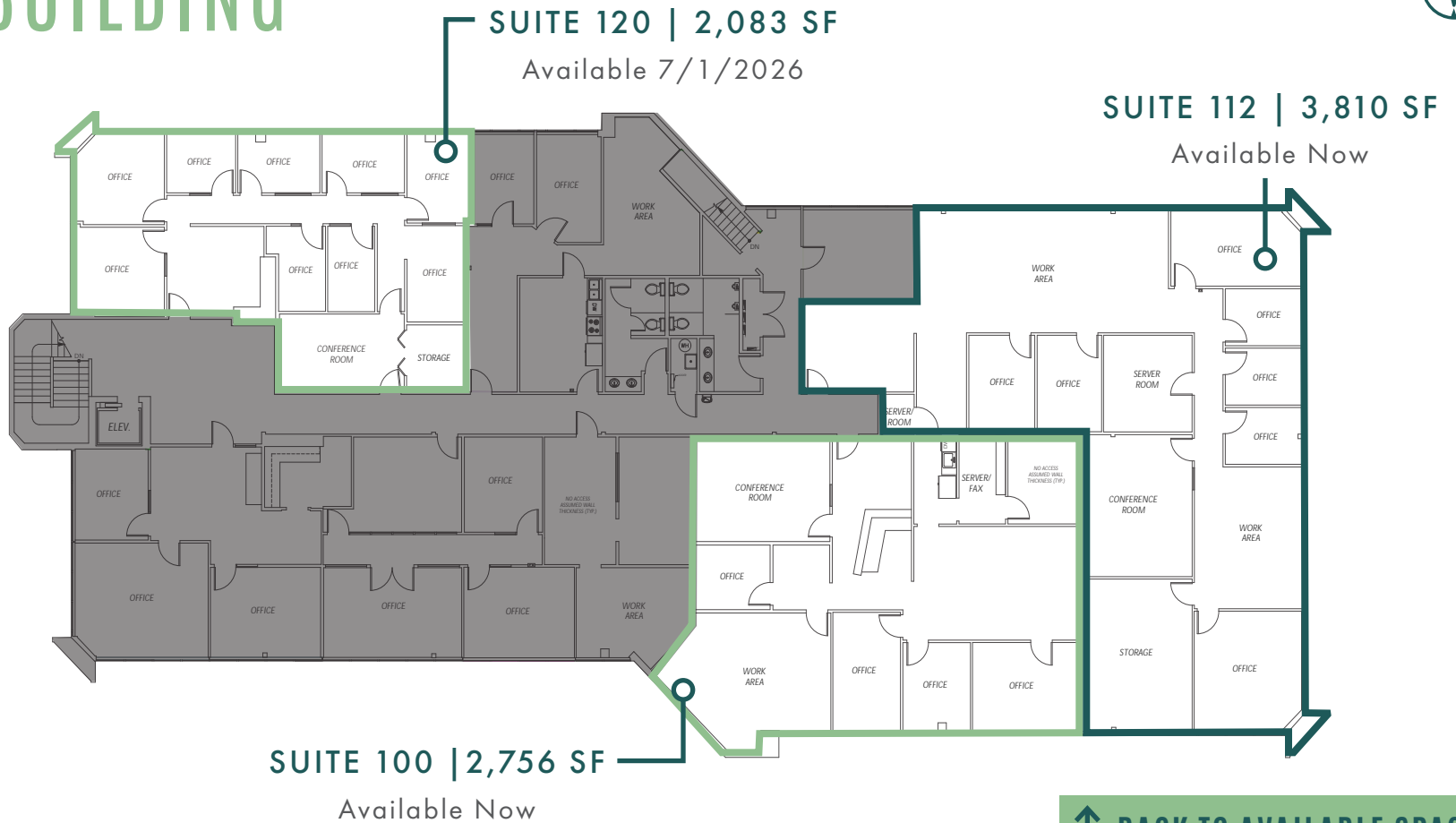
[↑ BACK TO AVAILABLE SPACE](#)

BELLEVUE BUSINESS PARK

2100 124TH AVE NE | BELLEVUE, WA

2100 BUILDING

FLOOR 1



[↑ BACK TO AVAILABLE SPACE](#)