

MT

METROTRACT  
SEATTLE

---

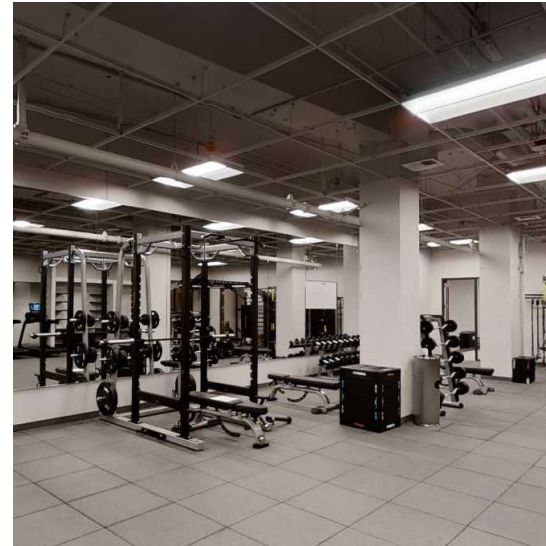
# RAINIER TOWER





# RAINIER TOWER

1301 Fifth Avenue | Seattle, Washington 98101



## BUILDING FACTS

- » Total Building Size.....538,000 RSF
- » Number of Floors .....40
- » Average Floor Plate.....18,700 RSF
- » Year Built.....1977
- » Parking Ratio.....1 / 1,800 SF

## BUILDING AMENITIES

- » New conference room facility
- » Day-use lockers & showers
- » Ample parking available
- » Bike storage
- » MT Fitness Center located on the Lower Level of Rainier Tower

## ON-SITE RETAIL

- » Fonte
- » Mendocino Farms
- » Suit Supply
- » Equinox Gym



**Damon McCartney**  
 (206) 838-7633  
 mccartney@broderickgroup.com

**David Greenwood**  
 (206) 838-7635  
 greenwood@broderickgroup.com





# RAINIER TOWER

1301 Fifth Avenue | Seattle, Washington 98101

**WALK SCORE**  
**99**  
AVG ACROSS ALL METROPOLITAN TRACT BLDGS

## Lifestyle

1. Regal Cinemas
2. Westlake Park
3. Home Street Bank
4. 5th Avenue Theater
5. U.S. Post Office
6. Key Bank
7. Benaroya Hall
8. Seattle Art Museum
9. Queen Bee Nail Spa
10. American West Bank
11. UPS Store
12. Union Bank
13. Seattle Infant Development Center
14. Banner Bank
15. Bank of America
16. Seattle Public Library
17. Samir's Salon
18. Silicon Valley Bank
19. Downtown Dentistry
20. Capelli's Barbershop
21. Northwest Bank
22. YMCA - Facility / Child Care
23. Equinox Gym
24. Graham Rehabilitation and Wellness Center, Inc.
25. PCC Market

## Restaurant / Bar

1. Cheesecake Factory
2. SPIN Seattle
3. Ben Paris
4. Hard Rock Café
5. Blarney Stone Pub
6. Japonessa
7. Wild Ginger
8. Elephant & Castle
9. Ruth's Chris Steak House
10. Cortina
11. Goldfinch Tavern
12. Post Alley Pizza
13. Purple Café & Wine Bar
14. Outlier
15. Lobby Court
16. Tulio
17. Charlotte Restaurant & Lounge
18. Schuckers
19. Capital Grille
20. Fogo de Chao

## Coffee House

1. Starbucks
2. Fonte
3. Pegasus Coffee Bar
4. Vovito
5. Retro Coffee
6. Caffe Ladro
7. Cafe Miglore

## Hotel

1. Grand Hyatt Hotel
2. Sheraton Hotel
3. Hilton Seattle
4. Hotel Vintage Seattle
5. W Seattle
6. Hotel 1000
7. Renaissance Seattle Hotel

## Deli / Grab & Go

1. McDonald's
2. Pho 25
3. Chipotle
4. Gelatiamo
5. Sushi Kudasai
6. Jimmy John's
7. Subway
8. MOD Pizza
9. Melange Market
10. The Deli
11. Potbelly Sandwich Shop
12. Blue Water Taco Grill
13. Homegrown Sustainable Sandwich Shop
14. Evergreens Salad
15. Market Fresh
16. PCC Market (NEW)
17. Kudedon Noodles
18. Mendocino Farms

## Retail

1. Old Navy
2. AT&T
3. Nordstrom Rack
4. ZARA
5. Target
6. Nordstrom
7. Ross Dress for Less
8. Urban Outfitters
9. Ben Bridge Jeweler
10. Watson Kennedy Fine Home
11. Bartell Drugs

Underground Tunnel

Bike Lane



**Damon McCartney**  
(206) 838-7633  
mccartney@broderickgroup.com

**David Greenwood**  
(206) 838-7635  
greenwood@broderickgroup.com





# RAINIER TOWER

1301 Fifth Avenue | Seattle, Washington 98101

## RETAIL DISTRICT

\$1.6B ANNUAL RETAIL VOLUME

## MARKET DISTRICT

## MET TRACT

1.6M SF OF UNIVERSITY OF WASHINGTON OWNED BUILDINGS IN THE DOWNTOWN AREA



UNDERGROUND TUNNEL



BIKE LANE



# RAINIER TOWER

1301 Fifth Avenue  
Seattle, Washington 98101

**Damon McCartney**  
(206) 838-7633  
mccartney@broderickgroup.com

**David Greenwood**  
(206) 838-7635  
greenwood@broderickgroup.com



Broderick Group, Inc.  
10500 NE 8th Street, Suite 900  
Bellevue, WA 98004  
main: (206) 838-5775

broderickgroup.com

The information contained herein has been given to us by the owner or sources which we deem reliable. We have no reason to doubt its accuracy, but we do not guarantee it. Prospective tenants should carefully verify all information contained herein.

## CURRENT AVAILABLE SUITES

Floor / Suite	RSF	Comments
<a href="#"><u>38/3850</u></a>	8,501	<b>Available 9/1/2026.</b> Open area with conference rooms and some private offices. <b>Virtual Tour available at <a href="https://bit.ly/4uRxBxL">https://bit.ly/4uRxBxL</a></b>
<a href="#"><u>35/3500</u></a>	19,777	<b>Available now!</b> Multiple private offices, multiple conference rooms, break room and kitchenette. <b>Virtual Tour available at <a href="https://bit.ly/3PCDZd4">https://bit.ly/3PCDZd4</a></b>
<a href="#"><u>34/3405</u></a>	4,595	<b>Available now!</b> Multiple private offices, multiple conference rooms, break room and kitchenette. <b>Virtual Tour available at <a href="https://bit.ly/4eoOdaR">https://bit.ly/4eoOdaR</a></b>
<a href="#"><u>31/3150</u></a>	17,135	<b>Available 9/1/2027.</b> Combination of perimeter private offices and open area.
<a href="#"><u>31/3100</u></a>	2,612	<b>Available now!</b> West facing suite with views and lobby exposure. <b>Virtual Tour available at <a href="https://bit.ly/4rZWhCz">https://bit.ly/4rZWhCz</a></b>
<a href="#"><u>30/3000</u></a>	13,734	<b>Available now!</b> Wrap-around views to the West and South. Lobby exposure on the West side. Cold shell condition. <b>Virtual Tour available at <a href="https://bit.ly/3mGN8Pt">https://bit.ly/3mGN8Pt</a></b>
<a href="#"><u>29/2950</u></a>	7,230	<b>Available 9/1/2027.</b> 15 private offices, large reception area conference room.
<a href="#"><u>29/2900</u></a>	12,514	<b>Available now!</b> Multiple private offices, multiple conference rooms and open work area. <b>Virtual Tour available at <a href="https://bit.ly/3UL4mhG">https://bit.ly/3UL4mhG</a></b>
<a href="#"><u>28/2800</u></a>	19,777	<b>Available 9/1/2027.</b> Full floor with perimeter private office layout.
<a href="#"><u>17/1750</u></a>	7,483	<b>Available now!</b> Multiple private offices, multiple conference rooms and open work area. <b>Virtual Tour available at <a href="https://bit.ly/4fzHB7X">https://bit.ly/4fzHB7X</a></b>
<a href="#"><u>14/1400</u></a>	19,087	<b>Available now!</b> 8 private offices, 4 conference rooms, open work area, kitchenette and a break room. <b>Virtual Tour available at <a href="https://bit.ly/3fUIN9a">https://bit.ly/3fUIN9a</a></b>
<a href="#"><u>13/1300</u></a>	12,771	<b>Available now!</b> Multiple private offices, multiple conference rooms, open work area, kitchenette and break room. <b>Virtual Tour available at <a href="https://bit.ly/3XW4FYy">https://bit.ly/3XW4FYy</a></b>



# RAINIER TOWER

1301 Fifth Avenue  
Seattle, Washington 98101

**Damon McCartney**

(206) 838-7633

mccartney@broderickgroup.com

**David Greenwood**

(206) 838-7635

greenwood@broderickgroup.com



Broderick Group, Inc.  
10500 NE 8th Street, Suite 900  
Bellevue, WA 98004  
main: (206) 838-5775

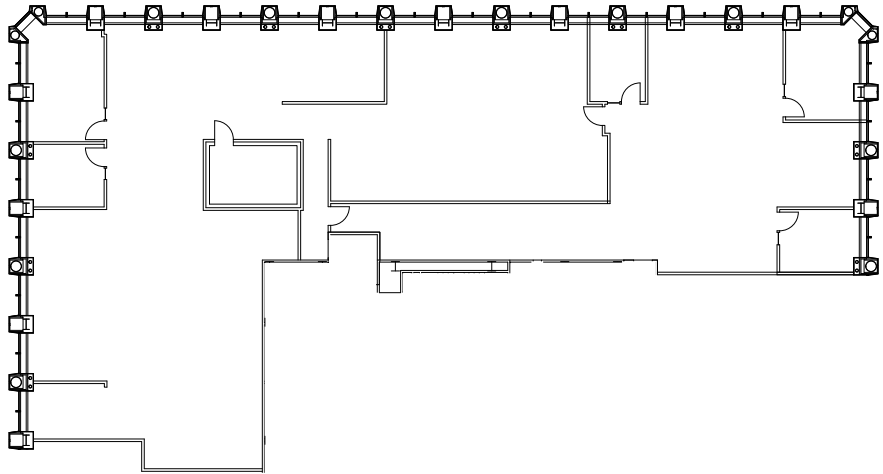
broderickgroup.com

The information contained herein has been given to us by the owner or sources which we deem reliable. We have no reason to doubt its accuracy, but we do not guarantee it. Prospective tenants should carefully verify all information contained herein.

For virtual tour, visit:  
<https://bit.ly/4uRxNxL>

# SUITE 3850

## 8,501 RSF



## SPACE FEATURES

- » Available 9/1/2026
- » Open work area
- » Conference rooms
- » Private Offices



**METROTRACT**  
SEATTLE



# RAINIER TOWER

1301 Fifth Avenue  
Seattle, Washington 98101

**Damon McCartney**

(206) 838-7633

mccartney@broderickgroup.com

**David Greenwood**

(206) 838-7635

greenwood@broderickgroup.com



Broderick Group, Inc.  
10500 NE 8th Street, Suite 900  
Bellevue, WA 98004  
main: (206) 838-5775

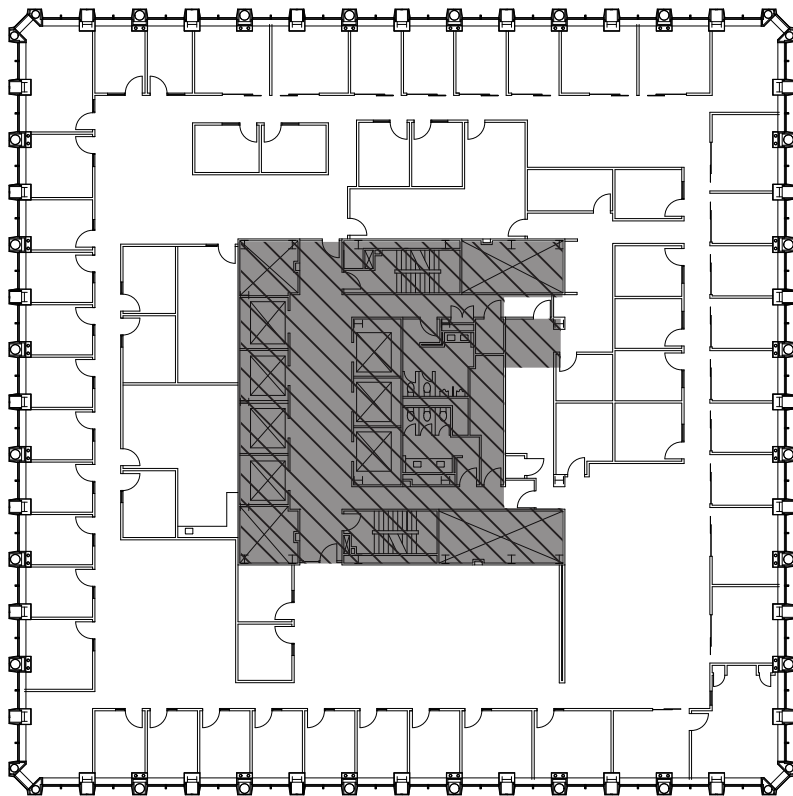
broderickgroup.com

The information contained herein has been given to us by the owner or sources which we deem reliable. We have no reason to doubt its accuracy, but we do not guarantee it. Prospective tenants should carefully verify all information contained herein.

For virtual tour, visit:  
<https://bit.ly/3PCDZd4>

# SUITE 3500

# 19,777 RSF



## SPACE FEATURES

- » Available now!
- » Multiple private offices
- » Multiple conference rooms
- » Break room
- » Kitchenette



**METROTRACT**  
SEATTLE



# RAINIER TOWER

1301 Fifth Avenue  
Seattle, Washington 98101

**Damon McCartney**

(206) 838-7633

mccartney@broderickgroup.com

**David Greenwood**

(206) 838-7635

greenwood@broderickgroup.com



Broderick Group, Inc.  
10500 NE 8th Street, Suite 900  
Bellevue, WA 98004  
main: (206) 838-5775

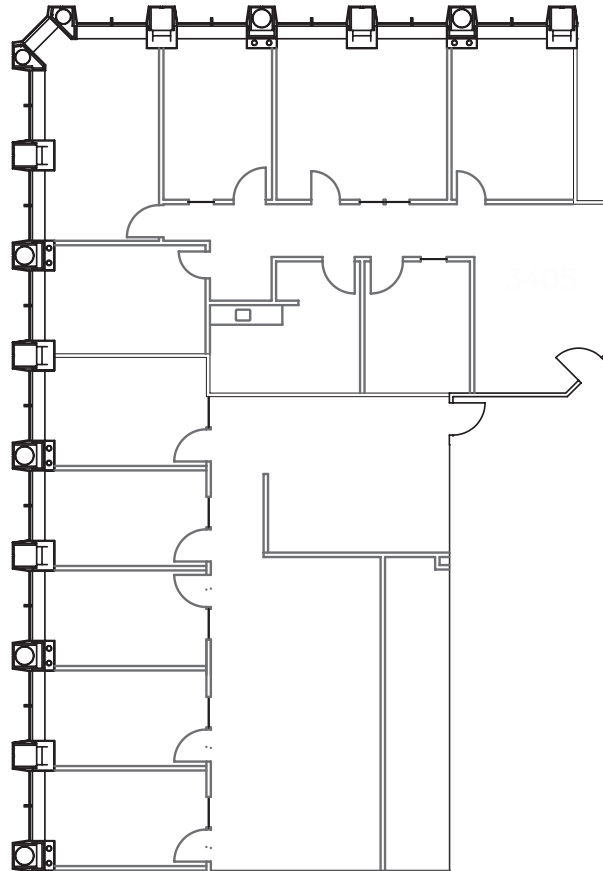
broderickgroup.com

The information contained herein has been given to us by the owner or sources which we deem reliable. We have no reason to doubt its accuracy, but we do not guarantee it. Prospective tenants should carefully verify all information contained herein.

For virtual tour, visit:  
<https://bit.ly/4eoOdaR>

## SUITE 3405

### 4,595 RSF



### SPACE FEATURES

- » Available now!
- » Multiple private offices
- » Multiple conference rooms
- » Break room / kitchenette



**METROTRACT**  
SEATTLE



# RAINIER TOWER

1301 Fifth Avenue  
Seattle, Washington 98101

**Damon McCartney**

(206) 838-7633

mccartney@broderickgroup.com

**David Greenwood**

(206) 838-7635

greenwood@broderickgroup.com

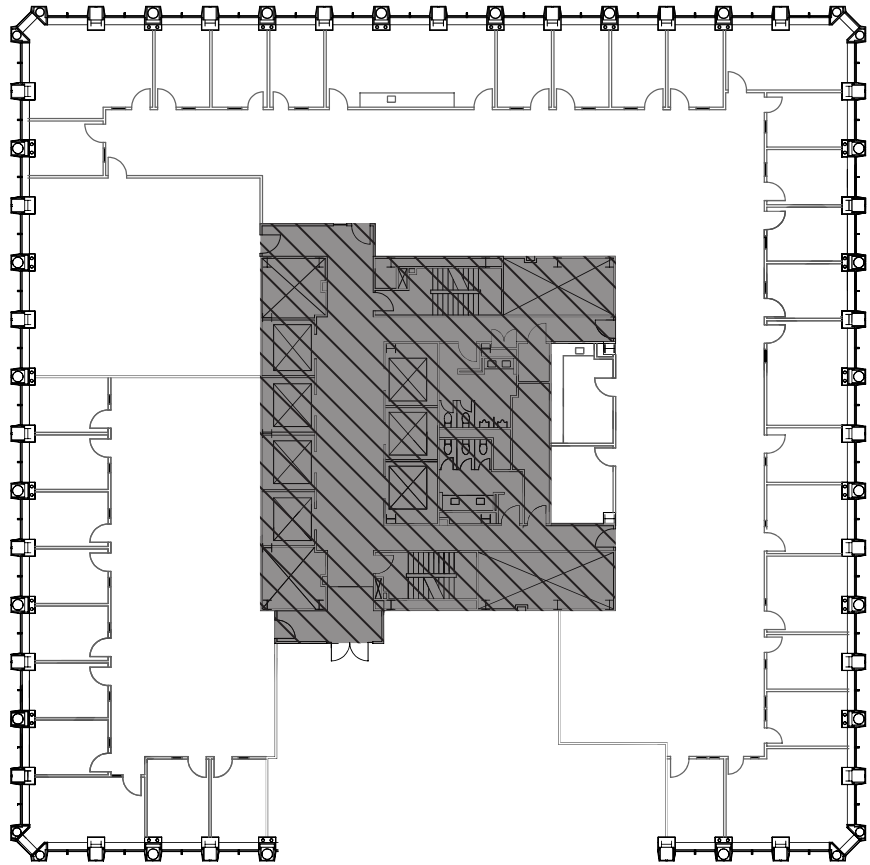


Broderick Group, Inc.  
10500 NE 8th Street, Suite 900  
Bellevue, WA 98004  
main: (206) 838-5775

broderickgroup.com

The information contained herein has been given to us by the owner or sources which we deem reliable. We have no reason to doubt its accuracy, but we do not guarantee it. Prospective tenants should carefully verify all information contained herein.

## SUITE 3150 17,135 RSF



### SPACE FEATURES

- » Available 9/1/2027
- » Perimeter private office layout



**METROTRACT**  
SEATTLE



# RAINIER TOWER

1301 Fifth Avenue  
Seattle, Washington 98101

**Damon McCartney**

(206) 838-7633

mccartney@broderickgroup.com

**David Greenwood**

(206) 838-7635

greenwood@broderickgroup.com



Broderick Group, Inc.  
10500 NE 8th Street, Suite 900  
Bellevue, WA 98004  
main: (206) 838-5775

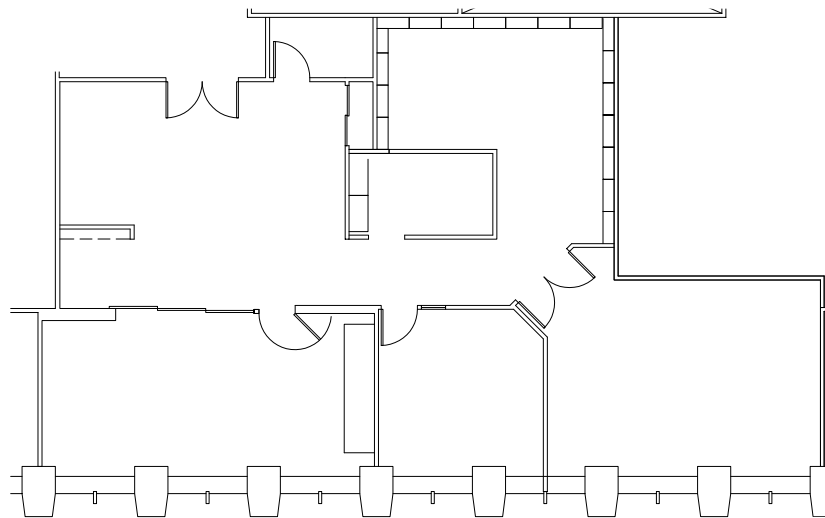
broderickgroup.com

The information contained herein has been given to us by the owner or sources which we deem reliable. We have no reason to doubt its accuracy, but we do not guarantee it. Prospective tenants should carefully verify all information contained herein.

For virtual tour, visit:  
<https://bit.ly/4rZWHz>

# SUITE 3100

## 2,612 RSF



## SPACE FEATURES

- » Available now!
- » West facing suite with views
- » Lobby exposure



**METROTRACT**  
SEATTLE



# RAINIER TOWER

1301 Fifth Avenue  
Seattle, Washington 98101

**Damon McCartney**  
(206) 838-7633

mccartney@broderickgroup.com

**David Greenwood**  
(206) 838-7635

greenwood@broderickgroup.com



Broderick Group, Inc.  
10500 NE 8th Street, Suite 900  
Bellevue, WA 98004  
main: (206) 838-5775

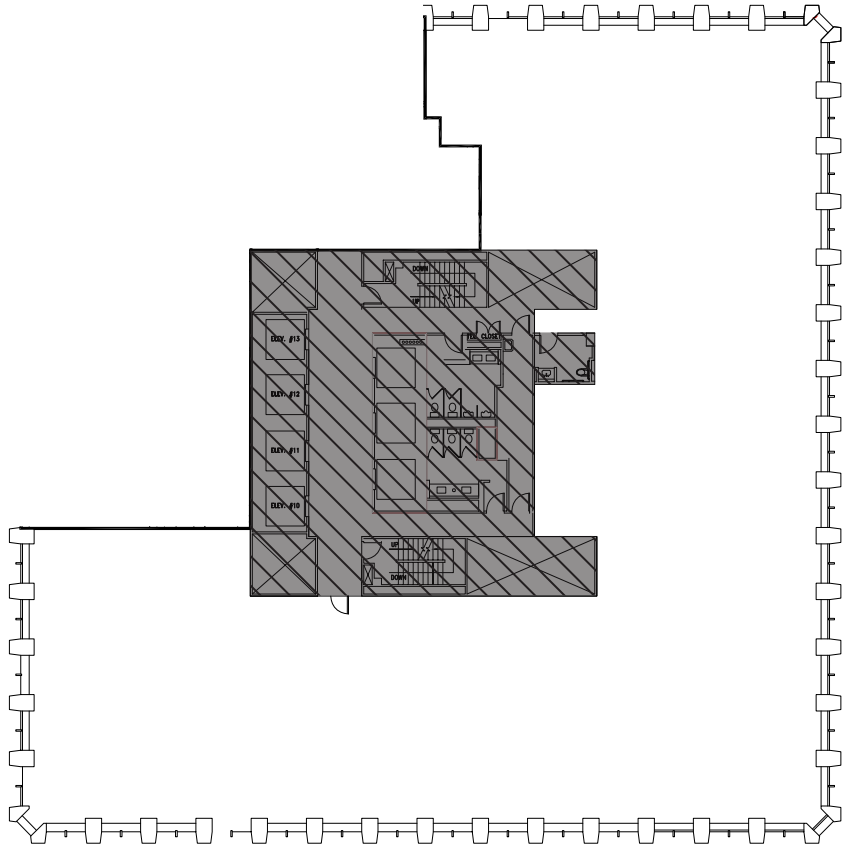
broderickgroup.com

The information contained herein has been given to us by the owner or sources which we deem reliable. We have no reason to doubt its accuracy, but we do not guarantee it. Prospective tenants should carefully verify all information contained herein.

For virtual tour, visit:  
[bit.ly/3mGN8Pt](http://bit.ly/3mGN8Pt)

# SUITE 3000

## 13,734 RSF



### SPACE FEATURES

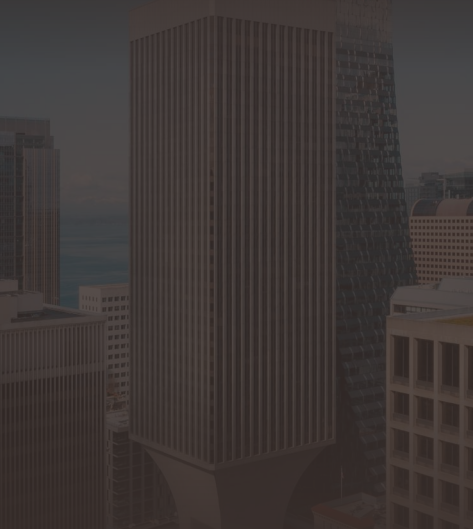
- » Available now!
- » Cold shell condition





# RAINIER TOWER

1301 Fifth Avenue  
Seattle, Washington 98101



**Damon McCartney**  
(206) 838-7633  
mccartney@broderickgroup.com

**David Greenwood**  
(206) 838-7635  
greenwood@broderickgroup.com

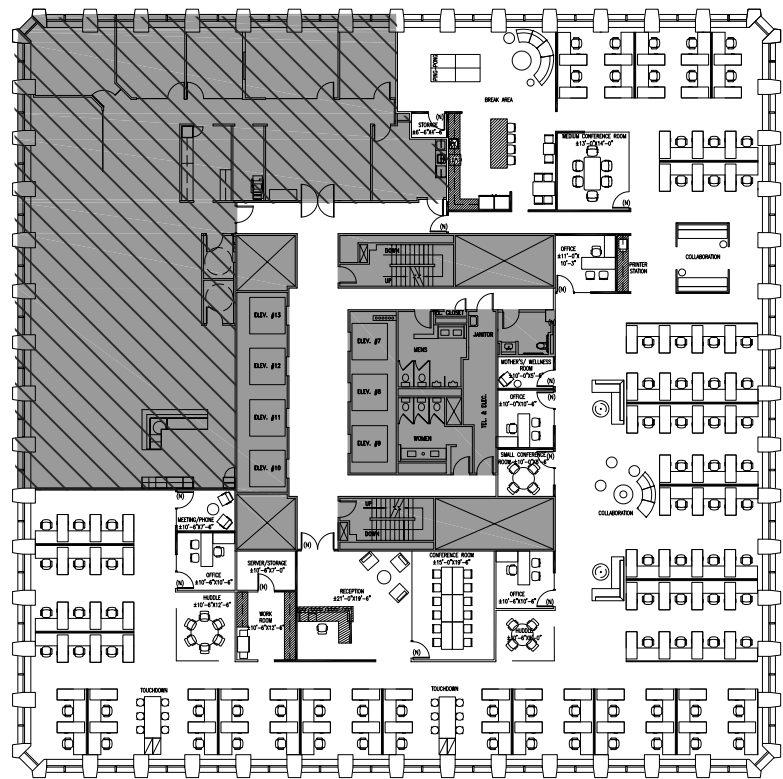


Broderick Group, Inc.  
10500 NE 8th Street, Suite 900  
Bellevue, WA 98004  
main: (206) 838-5775

broderickgroup.com

The information contained herein has been given to us by the owner or sources which we deem reliable. We have no reason to doubt its accuracy, but we do not guarantee it. Prospective tenants should carefully verify all information contained herein.

# SUITE 3000 CONCEPT - OPEN OFFICE PLAN 13,734 RSF



\*Proposed Plan

## SPACE FEATURES

- » 4 offices
- » 88 workstations
- » 1 reception area
- » 1 break room
- » 1 work room
- » 1 large conference room
- » 1 medium conference room
- » 1 small conference room
- » 1 meeting / phone room
- » 1 mother's / wellness room
- » 2 huddle rooms
- » 2 touchdown areas
- » 2 collaboration areas
- » 1 printer station
- » 1 storage room
- » 1 server / storage room





# RAINIER TOWER

1301 Fifth Avenue  
Seattle, Washington 98101

**Damon McCartney**

(206) 838-7633

mccartney@broderickgroup.com

**David Greenwood**

(206) 838-7635

greenwood@broderickgroup.com



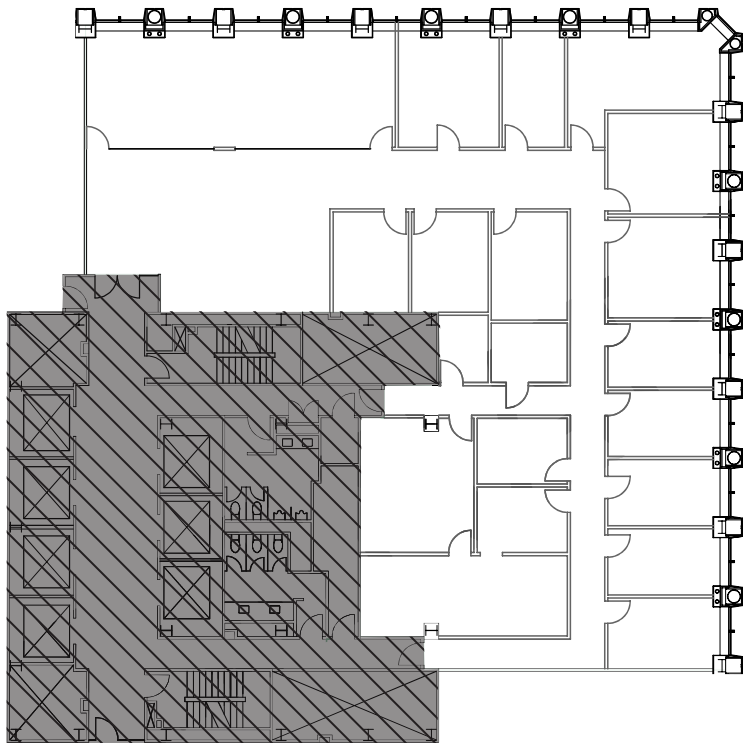
Broderick Group, Inc.  
10500 NE 8th Street, Suite 900  
Bellevue, WA 98004  
main: (206) 838-5775

broderickgroup.com

The information contained herein has been given to us by the owner or sources which we deem reliable. We have no reason to doubt its accuracy, but we do not guarantee it. Prospective tenants should carefully verify all information contained herein.

# SUITE 2950

# 7,230 RSF



## SPACE FEATURES

- » Available 9/1/2027
- » 15 private offices
- » Large reception area conference room



**METROTRACT**  
SEATTLE



# RAINIER TOWER

1301 Fifth Avenue  
Seattle, Washington 98101

**Damon McCartney**

(206) 838-7633

mccartney@broderickgroup.com

**David Greenwood**

(206) 838-7635

greenwood@broderickgroup.com



Broderick Group, Inc.  
10500 NE 8th Street, Suite 900  
Bellevue, WA 98004  
main: (206) 838-5775

broderickgroup.com

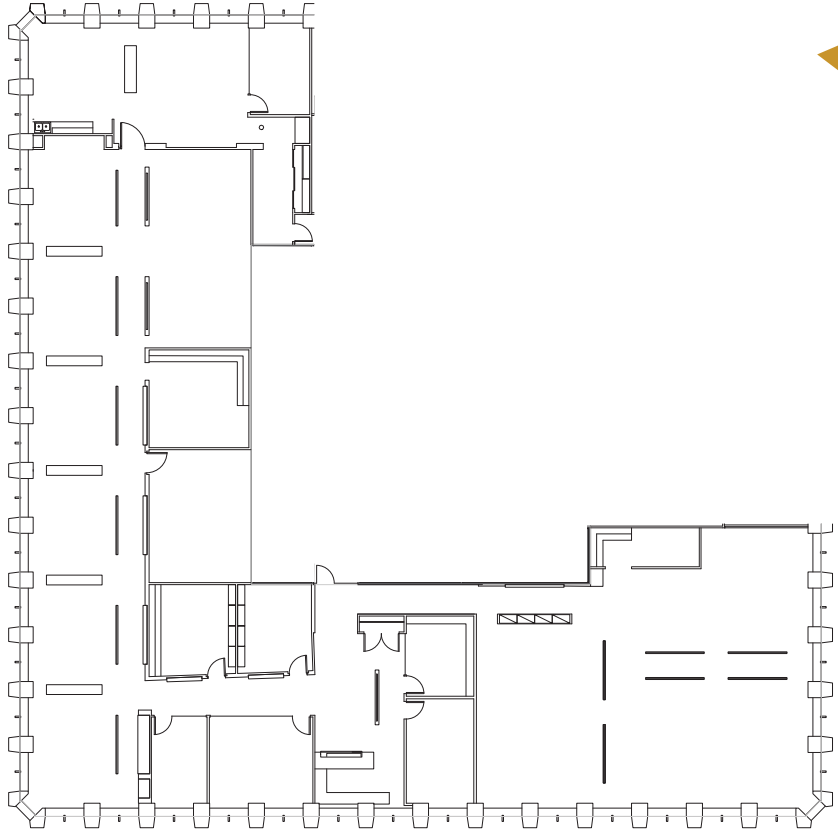
The information contained herein has been given to us by the owner or sources which we deem reliable. We have no reason to doubt its accuracy, but we do not guarantee it. Prospective tenants should carefully verify all information contained herein.

For virtual tour, visit:

[bit.ly/3UL4mhG](https://bit.ly/3UL4mhG)

# SUITE 2900

# 12,514 RSF



## SPACE FEATURES

- » Available now!
- » Multiple private offices
- » Multiple conference rooms
- » Open work area



**METROTRACT**  
SEATTLE



# RAINIER TOWER

1301 Fifth Avenue  
Seattle, Washington 98101

**Damon McCartney**

(206) 838-7633

mccartney@broderickgroup.com

**David Greenwood**

(206) 838-7635

greenwood@broderickgroup.com

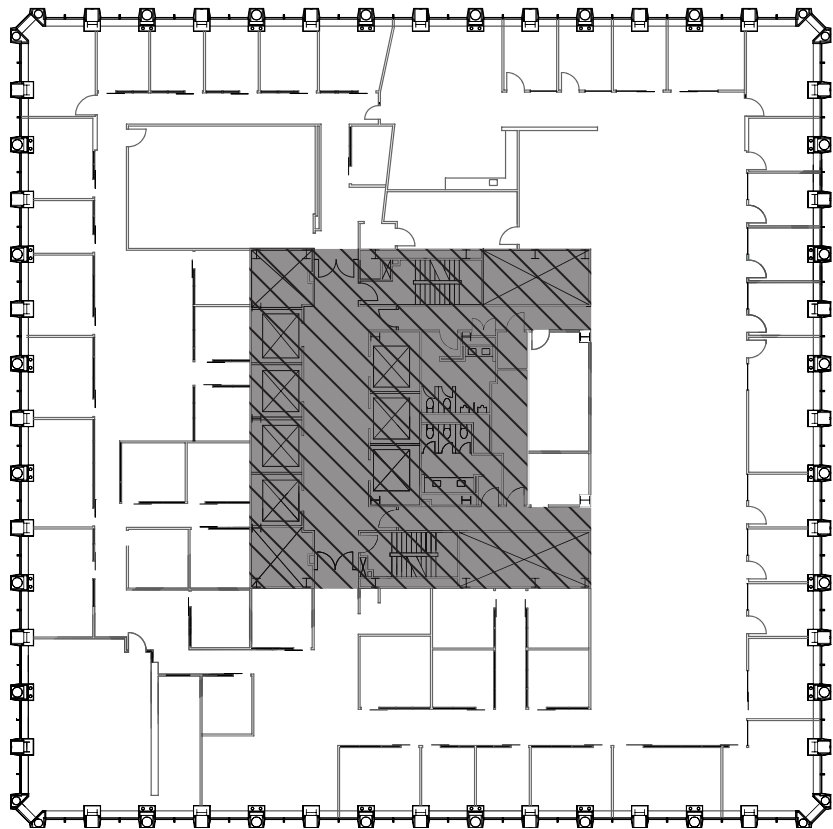


Broderick Group, Inc.  
10500 NE 8th Street, Suite 900  
Bellevue, WA 98004  
main: (206) 838-5775

broderickgroup.com

The information contained herein has been given to us by the owner or sources which we deem reliable. We have no reason to doubt its accuracy, but we do not guarantee it. Prospective tenants should carefully verify all information contained herein.

## SUITE 2800 19,777 RSF



### SPACE FEATURES

- » Available 9/1/2027
- » Full floor
- » Perimeter private office layout



METROTRACT  
SEATTLE



# RAINIER TOWER

1301 Fifth Avenue  
Seattle, Washington 98101

**Damon McCartney**

(206) 838-7633

mccartney@broderickgroup.com

**David Greenwood**

(206) 838-7635

greenwood@broderickgroup.com



Broderick Group, Inc.  
10500 NE 8th Street, Suite 900  
Bellevue, WA 98004  
main: (206) 838-5775

broderickgroup.com

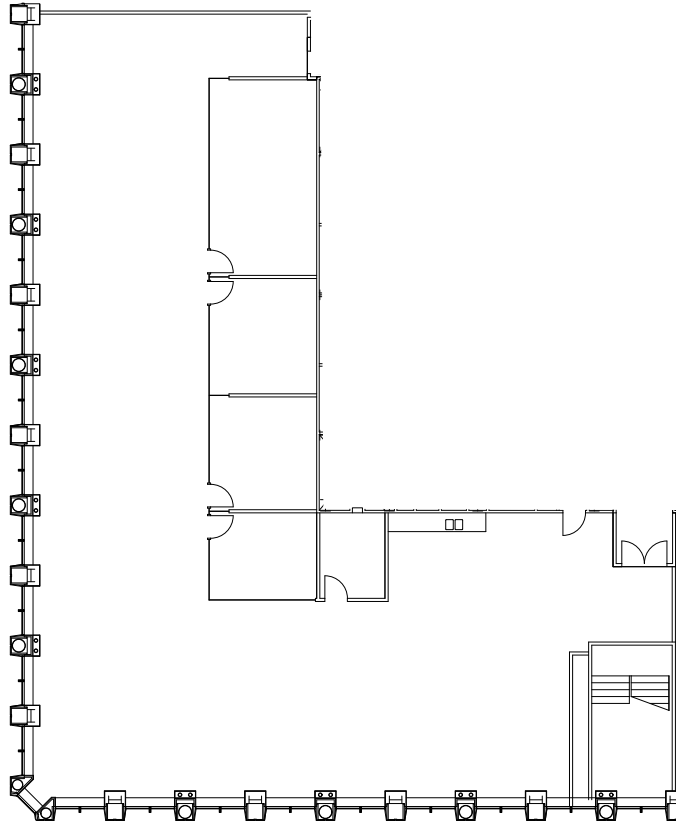
The information contained herein has been given to us by the owner or sources which we deem reliable. We have no reason to doubt its accuracy, but we do not guarantee it. Prospective tenants should carefully verify all information contained herein.

For virtual tour, visit:

[bit.ly/4fzHB7X](https://bit.ly/4fzHB7X)

# SUITE 1750

# 7,483 RSF



## SPACE FEATURES

- » Available now!
- » Multiple private offices
- » Multiple conference rooms
- » Open work area
- » Kitchenette
- » Break room



**METROTRACT**  
SEATTLE



# RAINIER TOWER

1301 Fifth Avenue  
Seattle, Washington 98101

**Damon McCartney**

(206) 838-7633

mccartney@broderickgroup.com

**David Greenwood**

(206) 838-7635

greenwood@broderickgroup.com



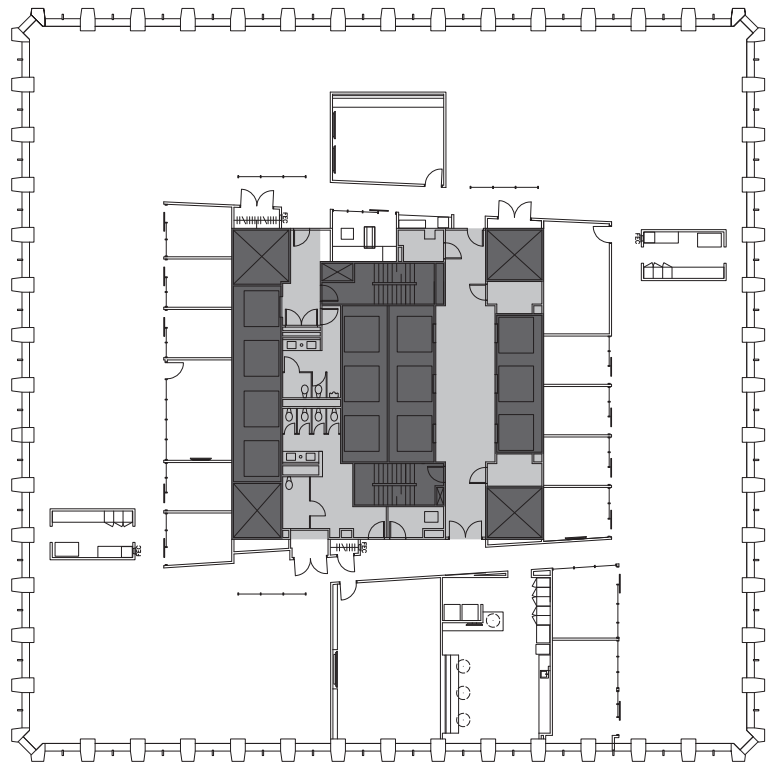
Broderick Group, Inc.  
10500 NE 8th Street, Suite 900  
Bellevue, WA 98004  
main: (206) 838-5775

broderickgroup.com

The information contained herein has been given to us by the owner or sources which we deem reliable. We have no reason to doubt its accuracy, but we do not guarantee it. Prospective tenants should carefully verify all information contained herein.

For virtual tour, visit:  
[bit.ly/3fUIN9a](https://bit.ly/3fUIN9a)

**SUITE 1400**  
**19,087 RSF**



## SPACE FEATURES

- » Available now!
- » 8 private offices
- » 4 conference rooms
- » Open work area
- » Kitchenette
- » Break room



**METROTRACT**  
SEATTLE



# RAINIER TOWER

1301 Fifth Avenue  
Seattle, Washington 98101

**Damon McCartney**  
(206) 838-7633  
mccartney@broderickgroup.com

**David Greenwood**  
(206) 838-7635  
greenwood@broderickgroup.com



Broderick Group, Inc.  
10500 NE 8th Street, Suite 900  
Bellevue, WA 98004  
main: (206) 838-5775

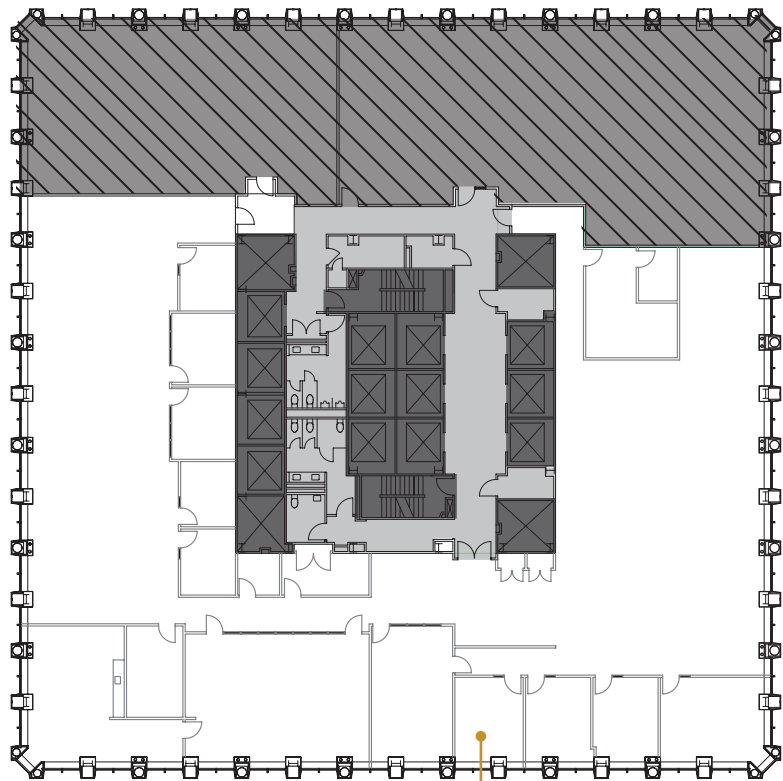
broderickgroup.com

The information contained herein has been given to us by the owner or sources which we deem reliable. We have no reason to doubt its accuracy, but we do not guarantee it. Prospective tenants should carefully verify all information contained herein.

For virtual tour, visit:  
[bit.ly/3XW4FYy](https://bit.ly/3XW4FYy)

# SUITE 1300

## 12,771 RSF



↳ Suite 1300

## SPACE FEATURES

- » Available now!
- » Multiple private offices
- » Multiple conference rooms
- » Open work area
- » Kitchenette
- » Break room



**METROTRACT**  
SEATTLE



**METROTRACT**

SEATTLE



Broderick Group, Inc.  
10500 NE 8th Street, Suite 900  
Bellevue, WA 98004  
main: (206) 838-5775

[broderickgroup.com](http://broderickgroup.com)

**Damon McCartney**  
(206) 838-7633

[mccartney@broderickgroup.com](mailto:mccartney@broderickgroup.com)

**David Greenwood**  
(206) 838-7635

[greenwood@broderickgroup.com](mailto:greenwood@broderickgroup.com)