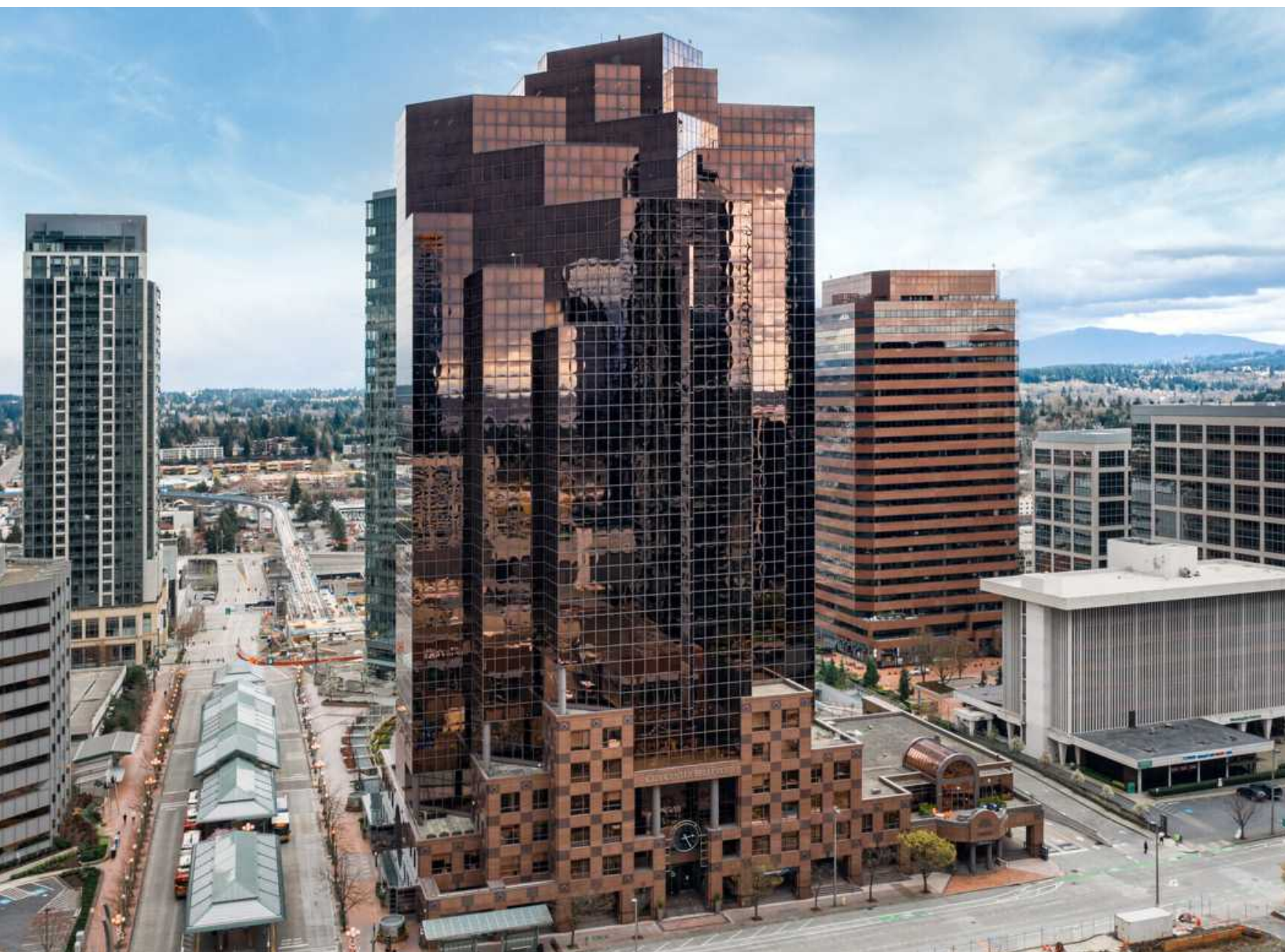


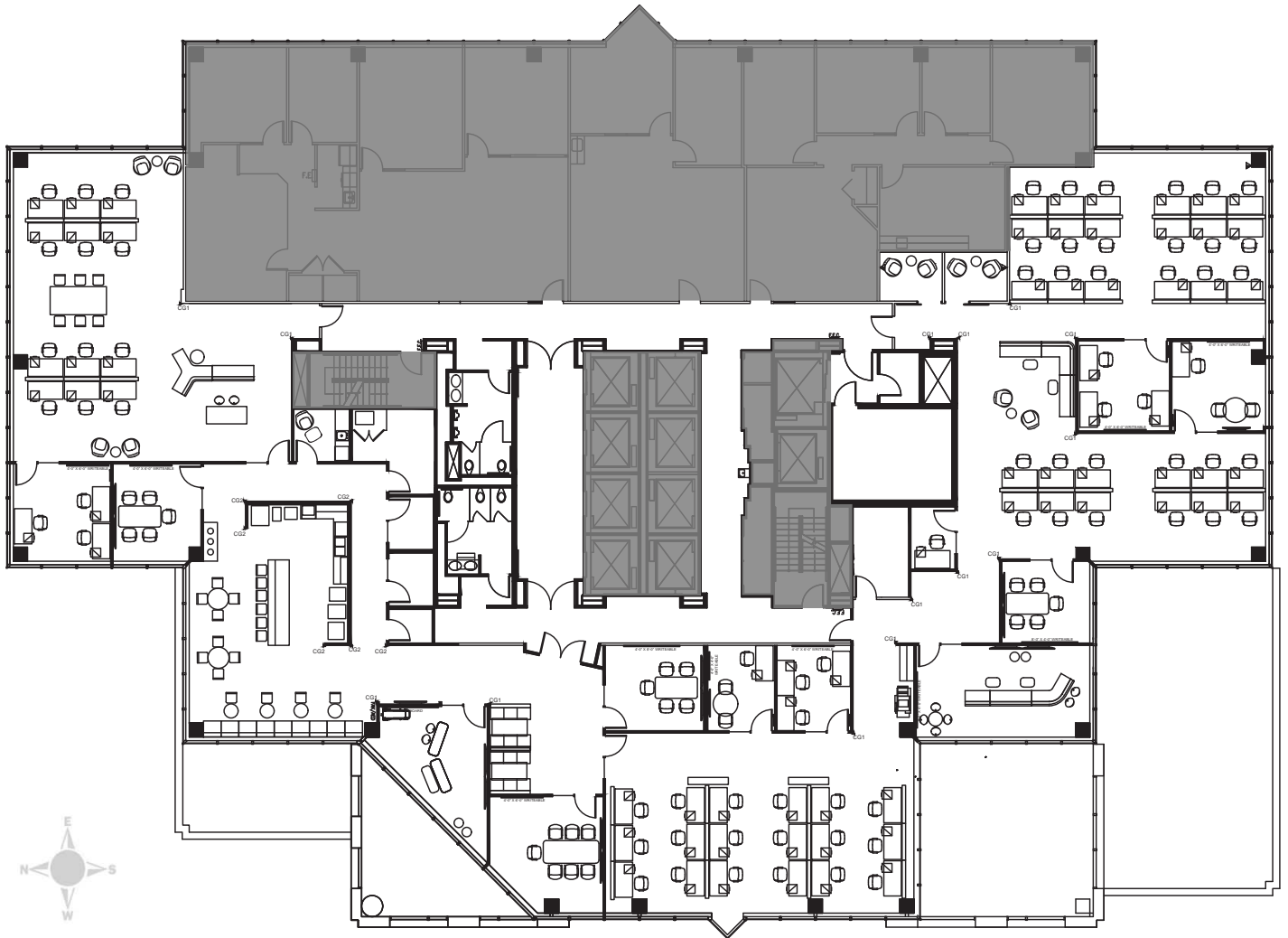
# City Center Bellevue

Suite 700

500 108th Ave NE  
Bellevue, WA 98004  
[www.cbre.com/bellevue](http://www.cbre.com/bellevue)



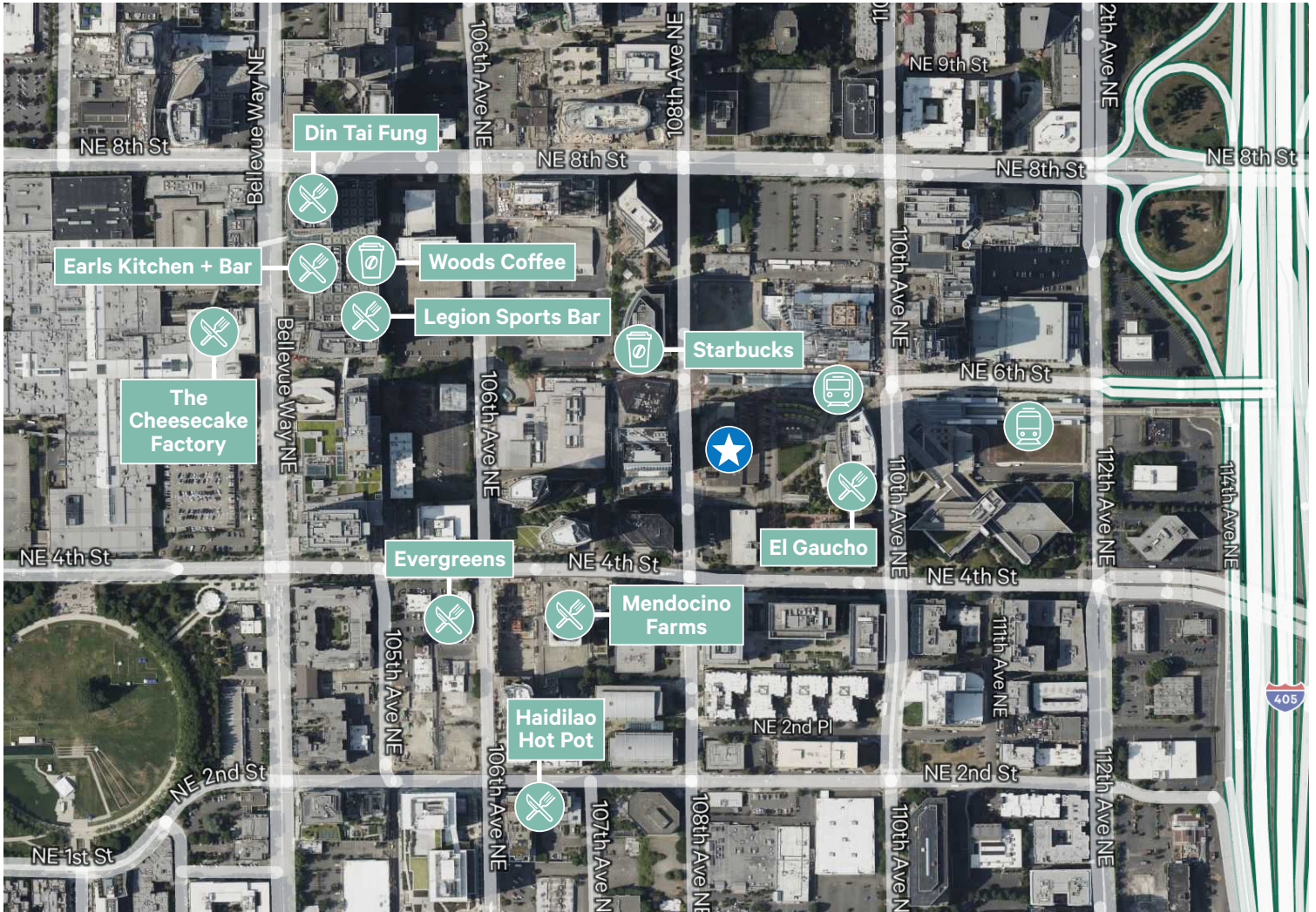
# Floor Plan



## Space Information

- + Suite 700: 12,545 RSF
- + Lease End Date: 4/30/2029
- + High end tech buildout with furniture available
- + Efficient layout with mix of collaboration space, private offices, conference rooms, and open work areas
- + Immediate proximity to Bellevue Transit Center and downtown Light Rail station
- + Onsite food operators include Mercury Coffee, Bowl Gogi and Pho Cyclo
- + State-of-the-art fitness center, locker rooms, conference center and secured indoor bike storage
- + High credit sublessor

# Area Map



## Contact Us

**Brian Biege**  
Executive Vice President  
+1 425 462 6914  
brian.biege@cbre.com

**Bryan Oliver**  
Senior Vice President  
+1 425 749 9903  
bryan.oliver@cbre.com

**Jacob Hamlin**  
First Vice President  
+1 425 319 7252  
jacob.hamlin@cbre.com

**CBRE, Inc.**  
929 108th Ave NE  
Suite 700  
Bellevue, WA 98004

© 2026 CBRE, Inc. All rights reserved. This information has been obtained from sources believed reliable, but has not been verified for accuracy or completeness. You should conduct a careful, independent investigation of the property and verify all information. Any reliance on this information is solely at your own risk. CBRE and the CBRE logo are service marks of CBRE, Inc. All other marks displayed on this document are the property of their respective owners, and the use of such logos does not imply any affiliation with or endorsement of CBRE. Photos herein are the property of their respective owners. Use of these images without the express written consent of the owner is prohibited. DW\_6.8.2026