

FOR LEASE

10914 25th Ave E
Tacoma, WA 98445



10914 25TH AVE E | WAREHOUSE

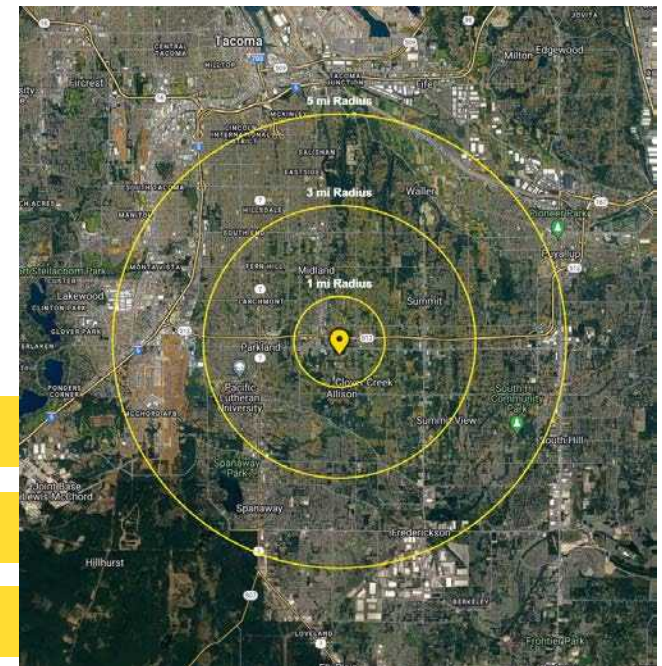
First Western Properties—Tacoma Inc. | 253.472.0404
6402 Tacoma Mall Blvd, Tacoma, WA 98409 | fwp-inc.com

10914 25TH AVE EAST

4,992 SF - CLEAR SPAN WAREHOUSE

» AVAILABLE - Q3 2026

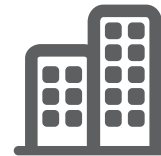
- Under Construction Now
- NEW Industrial Warehouse building for lease at 112th and Portland Ave, it will be the 3rd building of a small industrial park.
- 10,000-15,000 SF of yard space available (not included, call for details)
- Close access to Highway 512 - just minutes from Lakewood, Puyallup and Joint Base Lewis-Mcchord.
- Asking rate - \$6,000/month plus NNN
- Tenant pays, separately metered utilities, taxes, and insurance.



Population



Average HH Income



Daytime Population

Regis - 2026

	Population	Average HH Income	Daytime Population
Mile 1	5,543	\$106,535	3,778
Mile 3	79,938	\$113,891	40,137
Mile 5	235,442	\$115,951	123,231

Singe Slope TPO Roof

18' Clear Roof Structure

5' Wide 6" Concrete Sidewalk

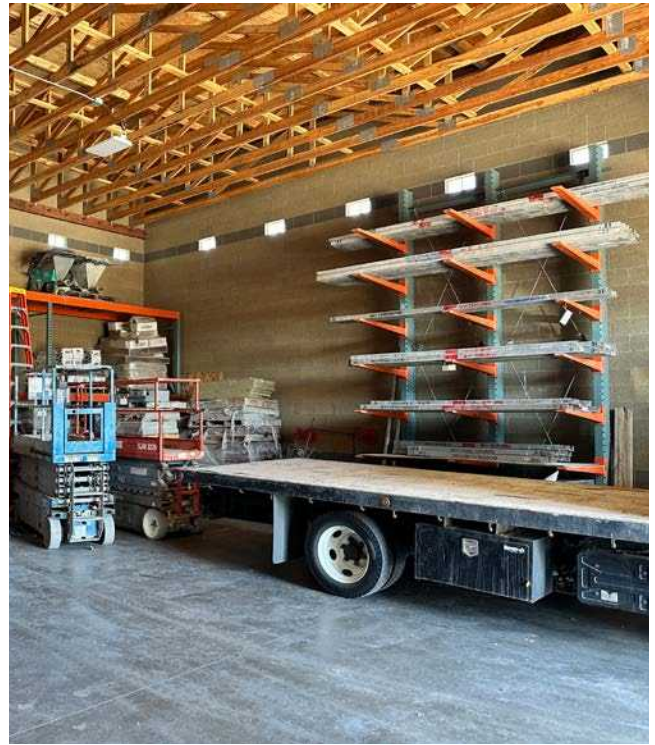
5' Roof Overhang

14' tall 20' Wide OH Door

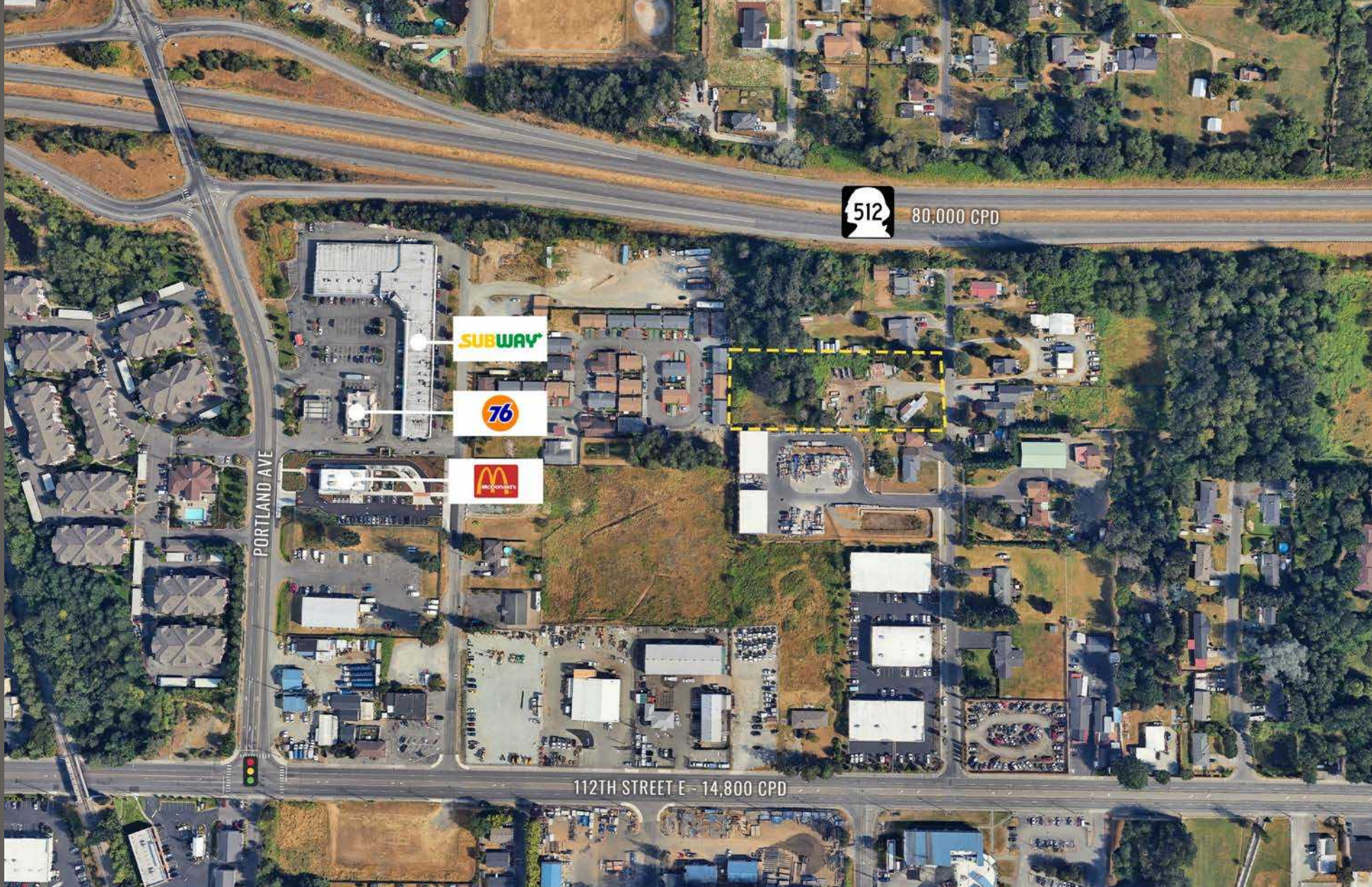
East Elevation (Front)

CMU Block Construction

PHOTOS



LOCATION DETAILS



Located moments from Lakewood and Puyallup



Quick Access to Hwy 512

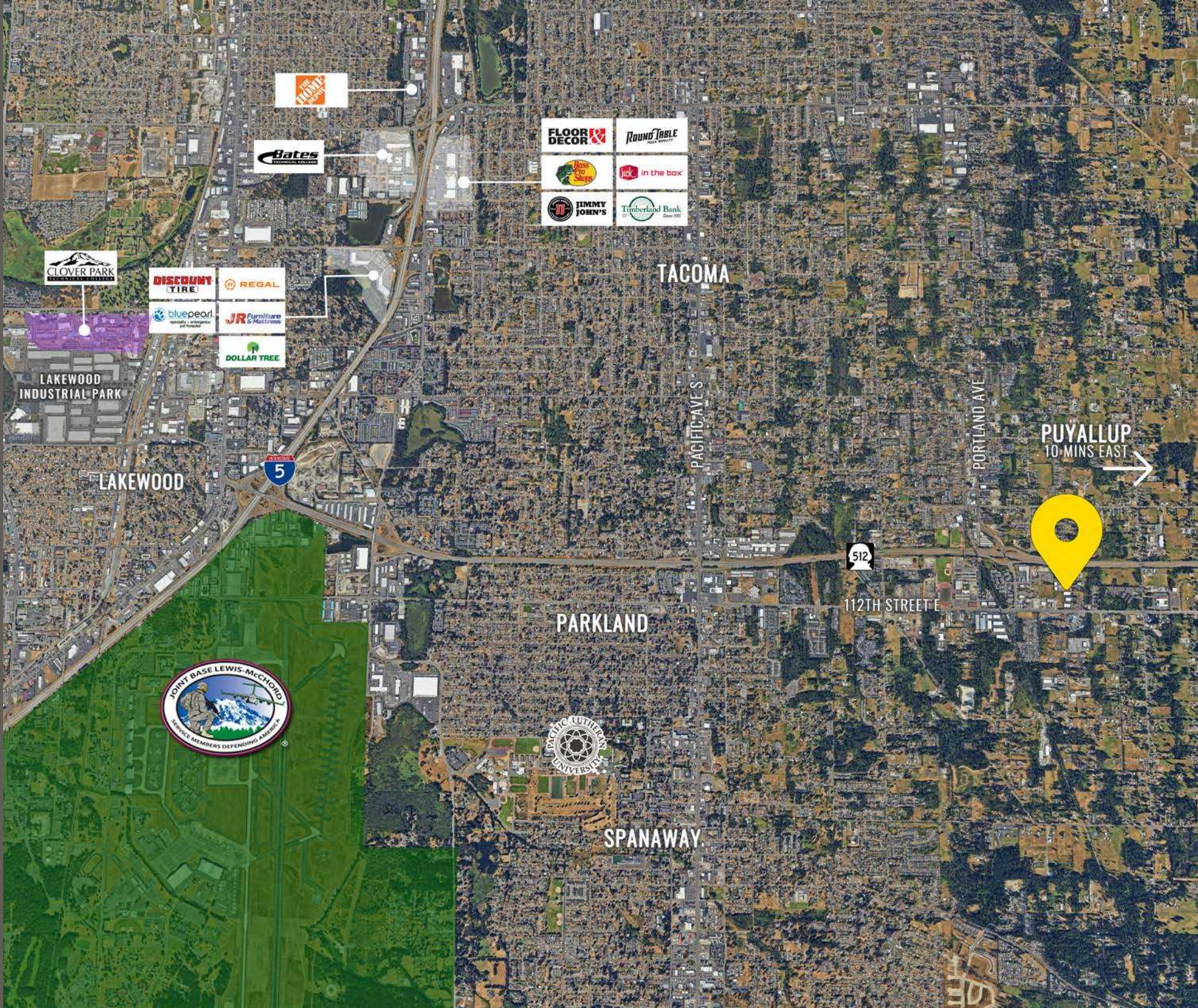


14,800 CPD
112th Street E



80,000 CPD
Hwy 512

LOCATION AERIAL



TACOMA | KIRKLAND | PORTLAND | SEATTLE

RELATIONSHIP FOCUSED.
RESULTS DRIVEN.



ANDY JESSBERGER

253.471.5507

andy@firstwesternproperties.com



First Western Properties—Tacoma Inc. | 253.472.0404
6402 Tacoma Mall Blvd, Tacoma, WA 98409 | fwp-inc.com

© First Western Properties, Inc. DISCLAIMER: The above information has been secured from sources believed to be reliable, however, no representations are made to its accuracy. Prospective tenants or buyers should consult their professional advisors and conduct their own independent investigation. Properties are subject to change in price and/or availability without notice.