

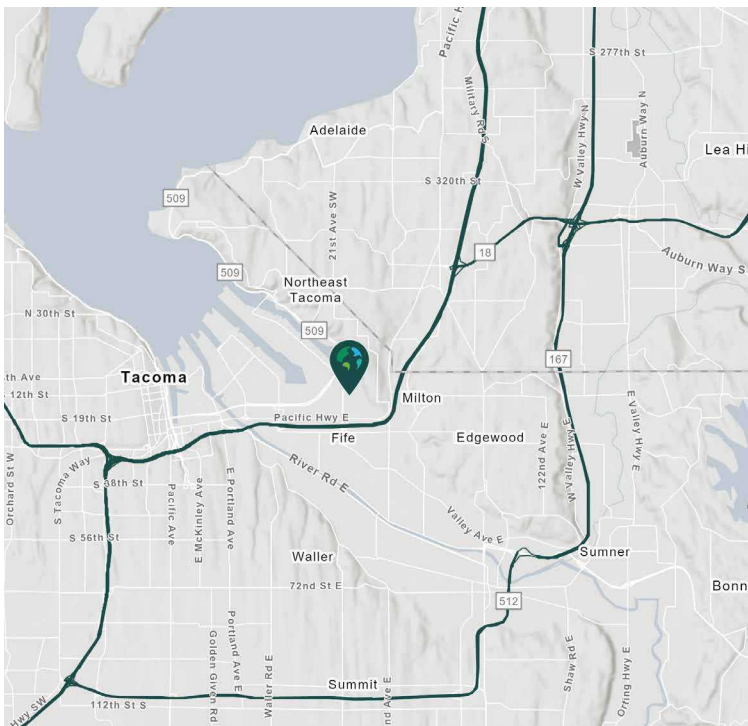
INDUSTRIAL SPACE FOR LEASE

62,964 SF



5555 8th St E  
Fife, WA 98424 USA

Prologis Park Fife 18



## Property Features

Available Date	September 1, 2026
Available Space	62,964 Shell SF
Office SF	2,720 SF
Clear Height	30'
Dock High Doors	14
Dock Levelers	Yes, all doors
Power	800 Amps 488/277V 3 Phase
Sprinklers	ESFR
Drive-in Doors	1 (10' x 14')
Car Parking Spaces	29
Truck Court	Ample

- Excellent access to I-5 and SR-167 and 509
- One minute drive to Port of Tacoma

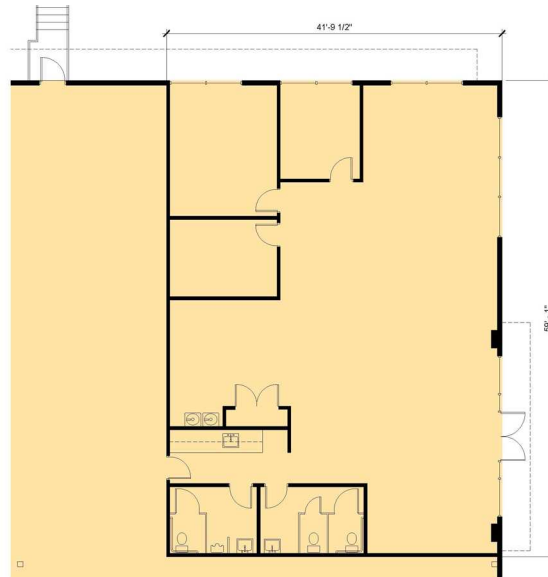
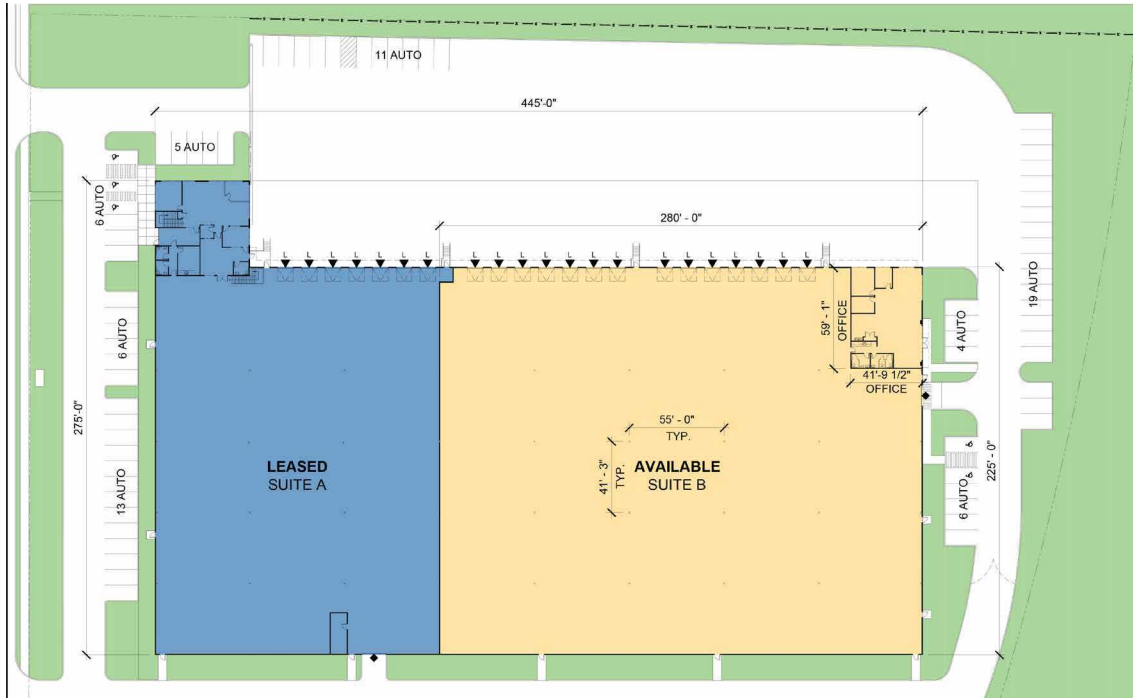


Unlock the full potential of your warehouse with one strategic, single-source partner.





Unlock the full potential of your warehouse with one strategic, single-source partner.



SUITE B OFFICE PLAN  
1/8" = 1'-0"



**Kidder Mathew**

Todd Clarke

todd.clarke@kidder.com

ph +1 253 722 1422

cell + 1 253 381 5500

**Kidder Mathew**

Ty Clarke

ty.clarke@kidder.com

ph +1 253 722 1419

cell + 1 253 720 2211

**Kidder Mathew**

Hunter Clarke

hunter.clarke@kidder.com

ph +1 253 722 1454

cell + 1 253 549 5517

**KBC Advisors**

Matt Wood

mattwood@kbcadvisors.com

ph +1 206 741 1030

cell + 1 206 595 6814

**Prologis**

Michelle Weeks

mweeks@prologis.com

ph +1 206 414 7631