

# 110 ROY



**BODYROK** COMING SOON

FOR LEASE

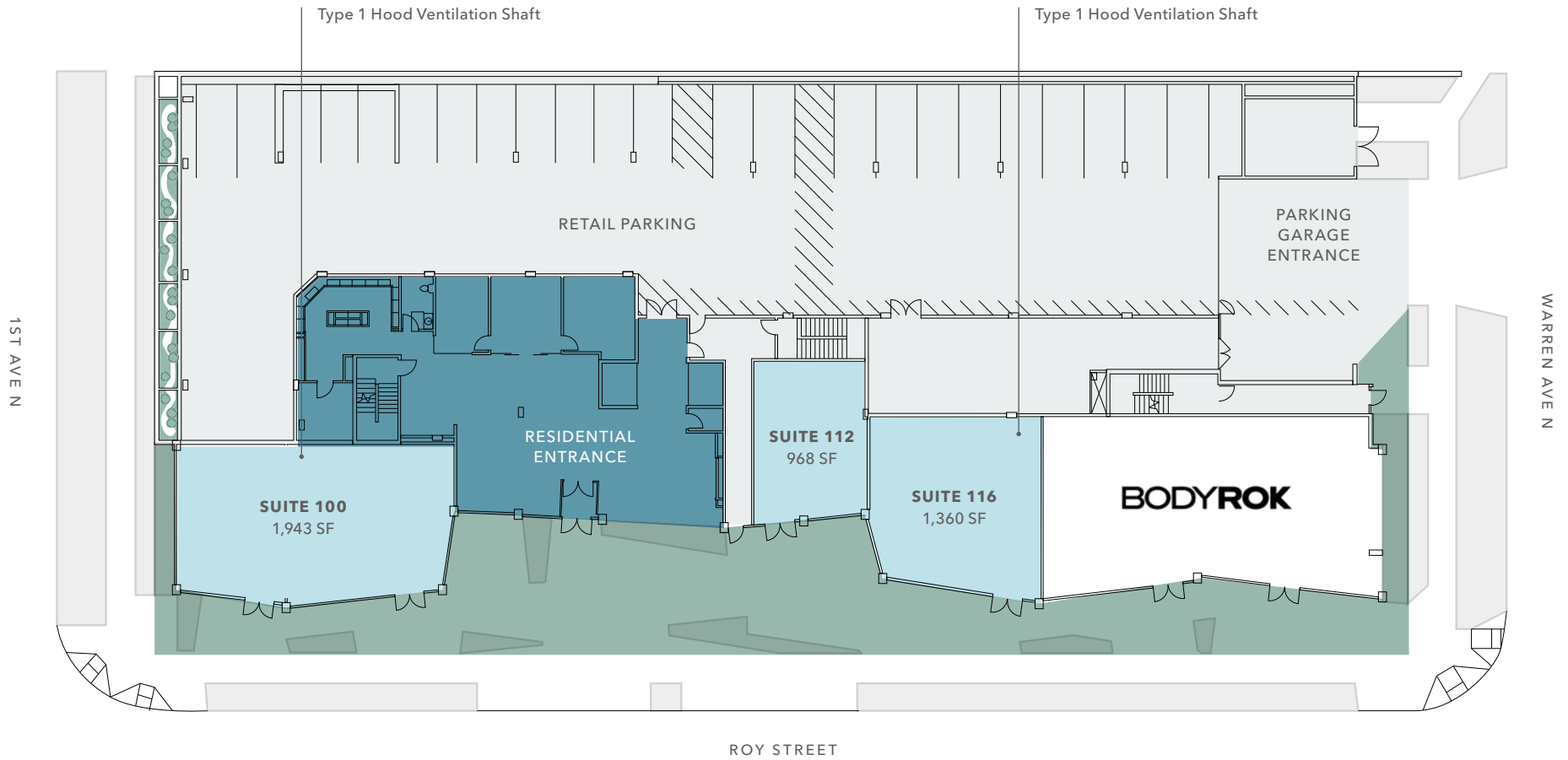
*New, mixed use, retail/restaurant space with parking.  
Two blocks from Climate Pledge Arena. Join our newest  
tenant, BodyRok at 110 Roy!*

110 ROY ST, SEATTLE, WA

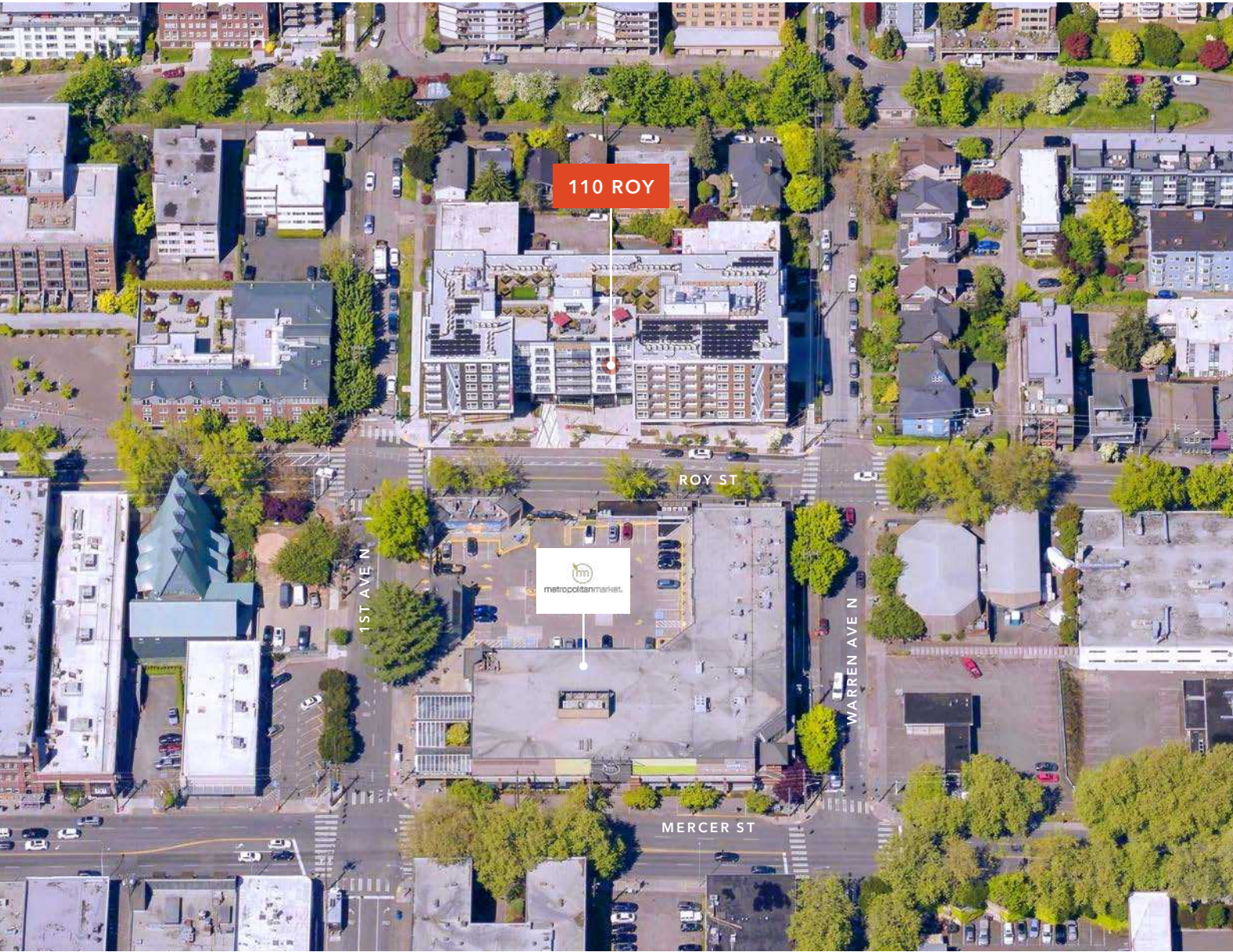
*NOW*

ESTIMATED DELIVERY

SEE PAGE 2, SITE PLAN  
FOR AVAILABILITY



Suite	SF	Available	Comments
Suite 100	1,943	Now	Endcap, ideal for quick service restaurant
Suite 112	968	Now	
Suite 116	1,360	Now	
Suite 120	2,425	N/A	BodyRok



96

WALK SCORE

*Walker's Paradise*



74

TRANSIT SCORE

*Excellent Transit*

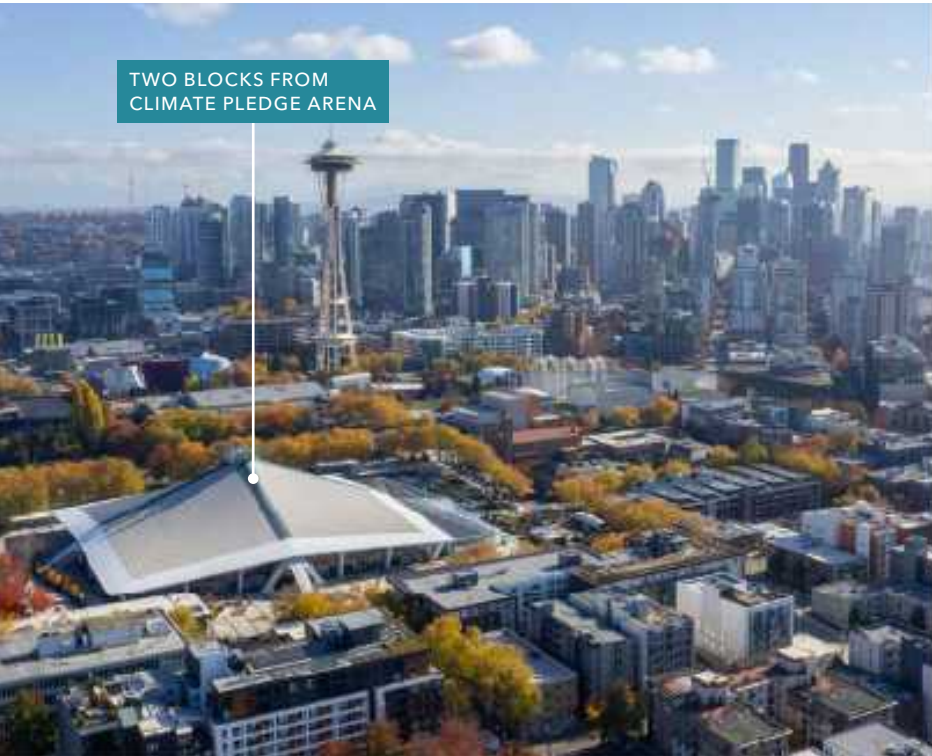


90

BIKE SCORE

*Biker's Paradise*





TWO BLOCKS FROM CLIMATE PLEDGE ARENA



ONE MILE FROM AMAZON HEADQUARTERS



110 ROY

METROPOLITAN MARKET

*Situated in the heart of Seattle's vibrant uptown neighborhood*

The project is a seven-story mixed-use building on Roy Street. It comprises 167 residential units and 6,696 square feet of retail/restaurant space. The site is located directly across the street from high-end grocer Metropolitan Market.

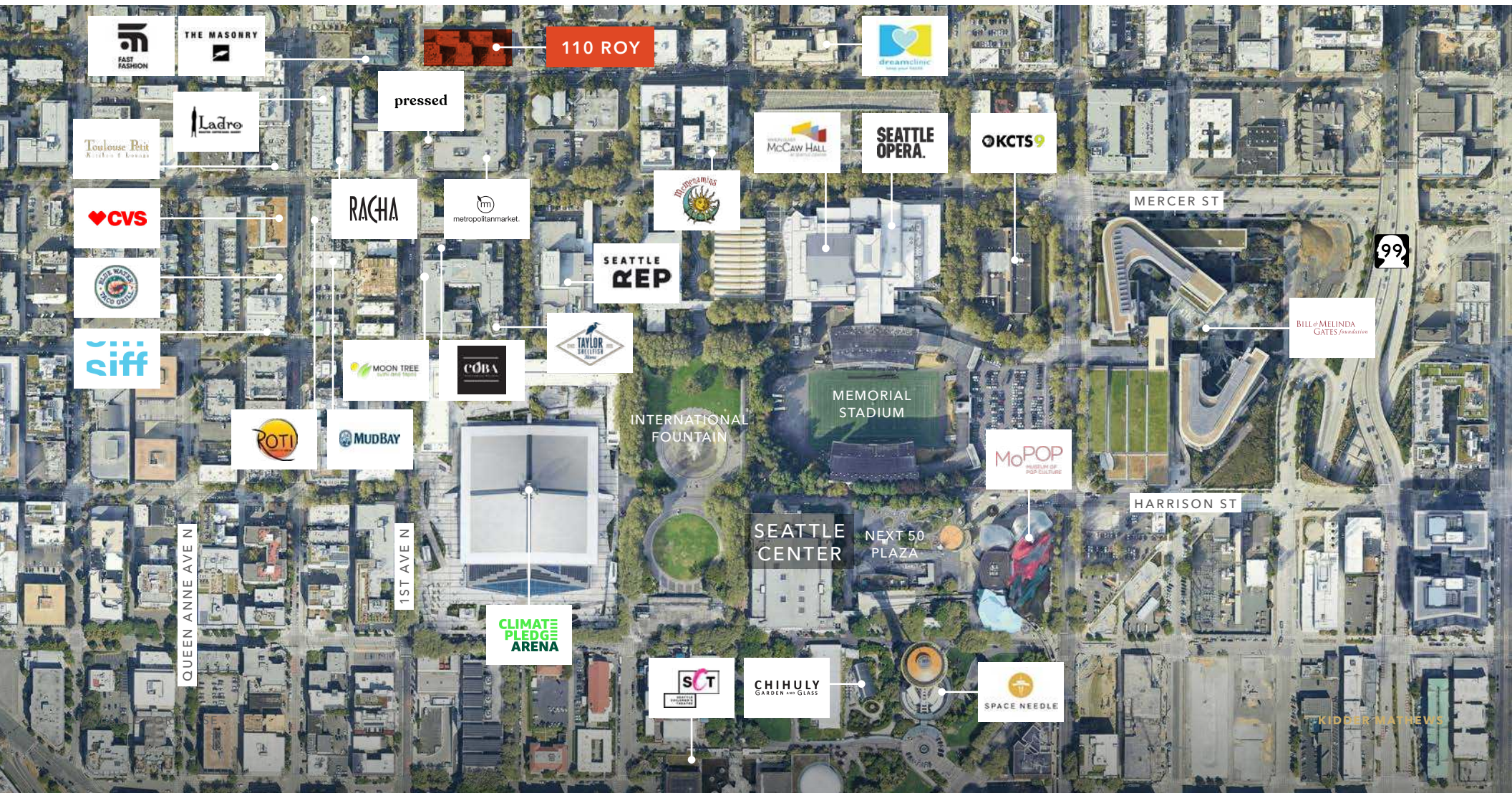
*Seattle is recognized as a hub for technology and medical research*

With several major companies based in downtown Seattle. These include Amazon, Google, the Bill & Melinda Gates Foundation, Facebook, Tableau Software, Adobe, The Fred Hutchinson Cancer Research Center, Dexter Yards and the Allen Institute for Brain Science.

*Two blocks from climate pledge arena, an 800,000 sf arena hosting up-to 18,100 attendees for their headliner concerts and Seattle's Kraken NHL team events.*

110 Roy is conveniently positioned just north of Seattle Center, a prominent regional hub for entertainment, arts, and culture, the neighborhood boasts several significant landmarks including the iconic Seattle Space Needle, McCaw Hall, Memorial Stadium, Chihuly Garden and Glass, and the Museum of Pop Culture (MoPop). Art patrons and area

residents dine at Seattle's most trend setting eateries surrounding Seattle Center. One block to the south, Seattle Center hosts a diverse array of cultural events and festivals throughout the year, including well-known events such as Bumbershoot, Northwest Folklife Festival, Bite of Seattle, and Seattle International Film Festival.



DEMOGRAPHICS

	0.5 Mile	1 Mile	3 Miles
TOTAL POPULATION (2023)	18,727	64,800	298,234
TOTAL DAYTIME POPULATION (2023)	22,849	80,801	507,172
BACHELOR'S DEGREE OR HIGHER	72.3%	78.8%	75.4%
TOTAL HOUSEHOLDS (2023)	11,940	38,666	164,436
AVG HOUSEHOLD INCOME	\$155,836	\$191,230	\$172,039
ESTIMATED TOTAL BUSINESSES	953	3,495	19,388
ESTIMATED TOTAL EMPLOYEES	13,954	54,610	352,690



90

BIKER'S PARADISE



97

WALKER'S PARADISE



71

EXCELLENT TRANSIT





# 110 ROY

*For more information about  
this listing, please contact*

JOHN CHELICO

206.398.2261

[john.chelico@kidder.com](mailto:john.chelico@kidder.com)

[KIDDER.COM](http://KIDDER.COM)

This information supplied herein is from sources we deem reliable. It is provided without any representation, warranty, or guarantee, expressed or implied as to its accuracy. Prospective Buyer or Tenant should conduct an independent investigation and verification of all matters deemed to be material, including, but not limited to, statements of income and expenses. Consult your attorney, accountant, or other professional advisor.

