

RETAIL FOR LEASE
STONEROW

4205 Stone Way N, Seattle, WA 98103

COMPLETION
MARCH 2026



For more information please contact:

LAURA MILLER
laura@gibraltarusa.com
206.351.3573



4205 STONE WAY N, SEATTLE, WA 98103

RETAIL FOR LEASE



THE NEIGHBORHOOD

Freewheeling and fun, the Fremont neighborhood offers funky finds for all ages and lifestyles. Charming cafes, friendly boutiques, and lively music venues gives these neighborhoods perennial flair. A distinct personality shines brightly in Fremont, an artsy, bohemian zone that also happens to be self-proclaimed "Center of the Universe." www.visitseattle.org

PROPERTY HIGHLIGHTS

- Rare street level retail space to lease in the heart of Seattle's bustling Stone Way corridor; intersecting Wallingford and Fremont
- Located at the base StoneRow, a new 5 story, 96 unit apartment building
- Two (2) garage parking stalls at fair market rate (for employees/not accessible for customers)
- Modern, high ceilings, great natural light, en-suite restroom
- Ideal for Pilates or fitness, retail, health/beauty, cafe.
- 1,300 Sq Ft
- Lease Rate \$35/Sq ft plus 2025 NNN estimated at \$8.00/Sq ft



64

TRANSIT SCORE



92

WALK SCORE



86

BIKE SCORE



148,839

TOTAL POPULATION



70,161

TOTAL HOUSEHOLDS

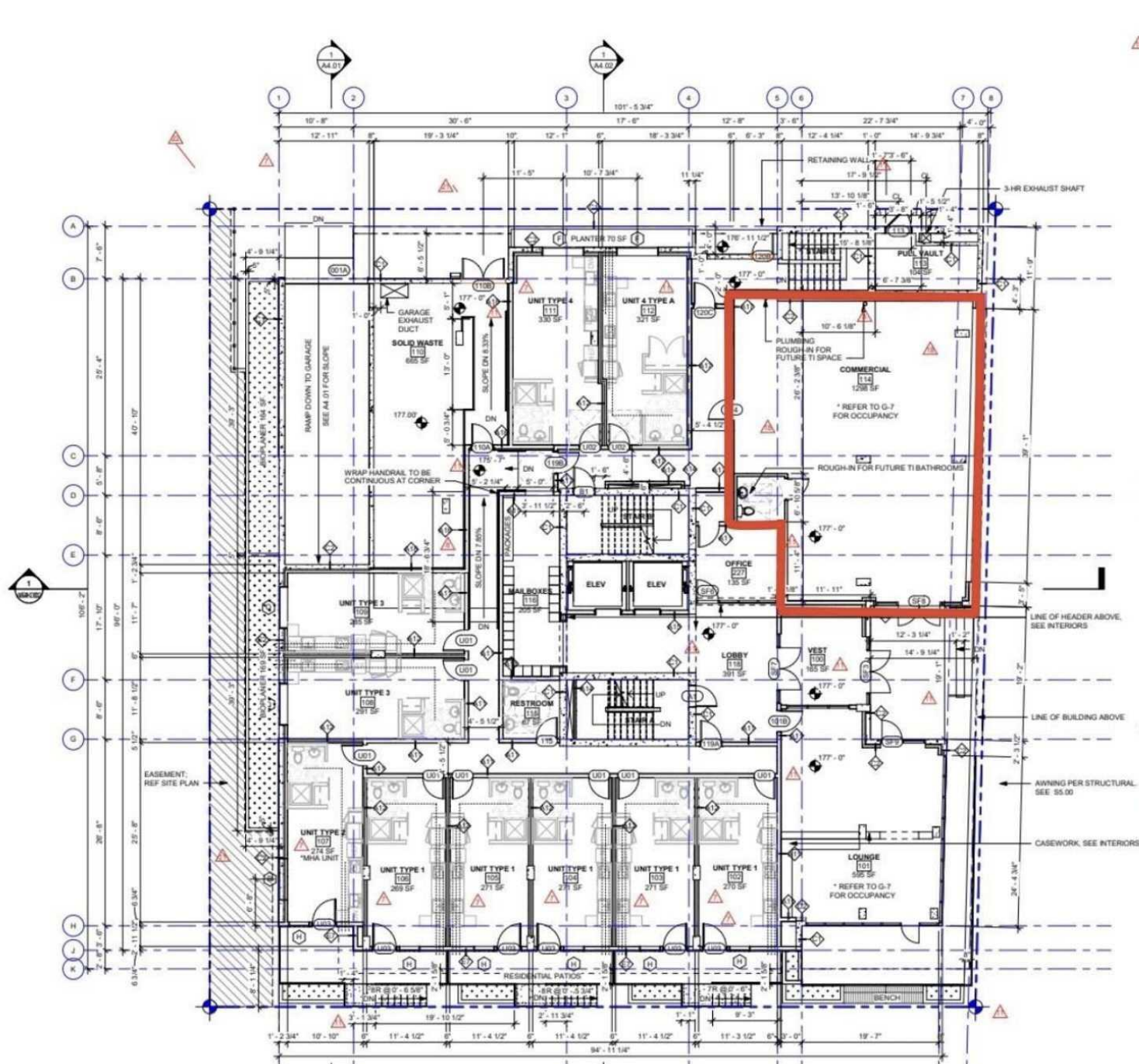


\$113,785

MEDIAN INCOME

* Estimated 2024 Demographics based on a 2 mile radius

RETAIL FOR LEASE



- PER DWG. #01710002, PCL. E
- SHIELDED AND DIRECTED
- HANDRAIL EXTENSIONS AT S
- ARE TO EXTEND 1'-0" PAST
- LOCATED 24"-36" ABOVE IN
- AN AUTOMATIC FIRE ALARM
- SHALL BE PROVIDED.

Stone Way N

AWNING PER STRUCTURAL
SEE 95.00

CASEWORK, SEE INTERIORS

