

FOR LEASE

2590 WILLAMETTE DR NE

LACEY, WA



2590 WILLAMETTE DR NE

OFFERS 5,658 SF
OF PROFESSIONAL
OFFICE SPACE WITHIN
LACEY'S *DESIRABLE*
MERIDIAN CAMPUS

The efficient floor plan features a combination of private offices, a conference room, open collaborative workspace, and a full kitchen/break area, providing flexibility for a wide range of office users. Large windows throughout the suite create an abundance of natural light and offer attractive views of the surrounding park-like setting.

AVAILABLE FOR LEASE

KIDDER MATHEWS



CONVENIENTLY LOCATED

Located just minutes from Interstate 5, Meridian Campus provides excellent regional access while maintaining a campus environment with mature landscaping and ample on-site parking. This move-in-ready office opportunity combines a professional image, functional layout, and outstanding accessibility. Offered at \$16.00 per square foot, NNN.

\$16.00
PSF/MO, NNN

5,658
AVAILABLE SF



FLOOR PLAN

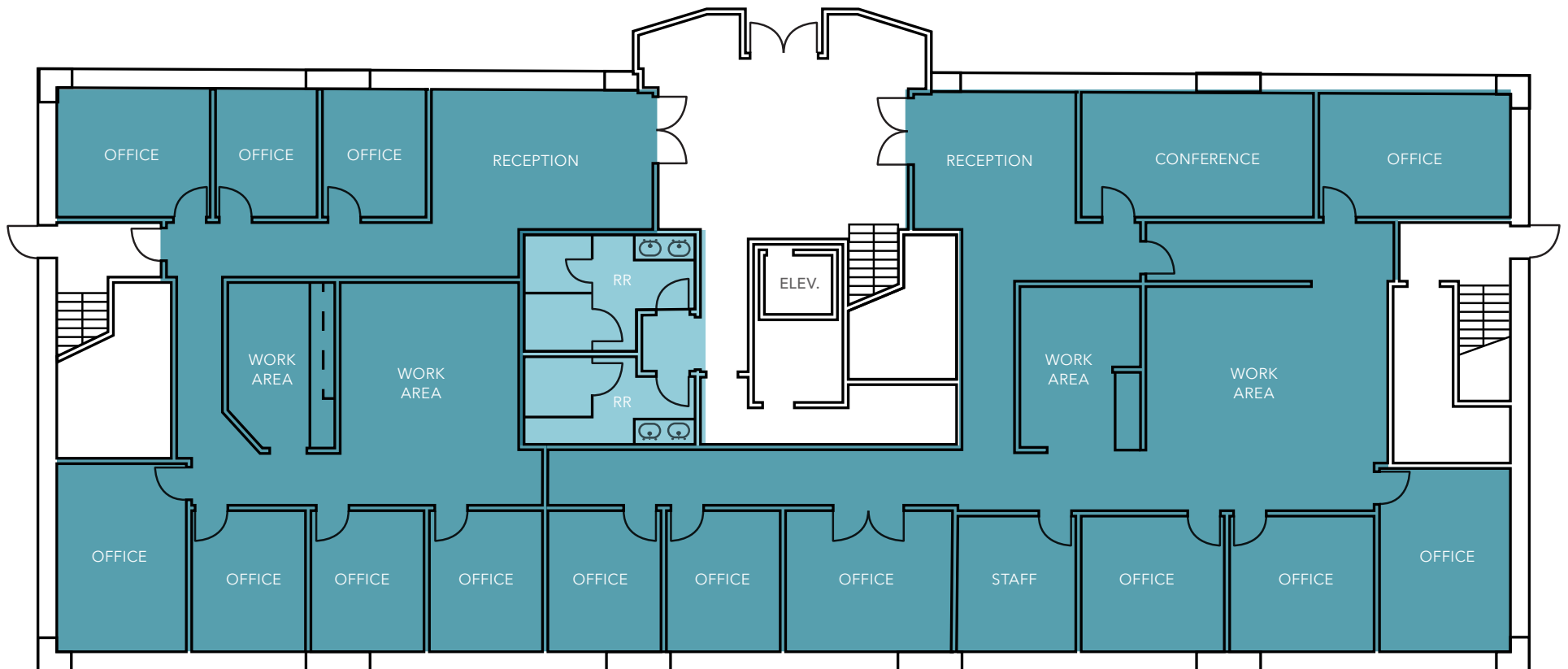
DEMISABLE TO 2,500 SF SUITES

5,658 SF

AVAILABLE

\$16.00

PSF/MO, NNN







2590 WILLAMETTE DR NE

*For more information on
this property, please contact*

AMY HARDING
360.705.1337
amy.harding@kidderm.com

KIDDER.COM

This information supplied herein is from sources we deem reliable. It is provided without any representation, warranty, or guarantee, expressed or implied as to its accuracy. Prospective Buyer or Tenant should conduct an independent investigation and verification of all matters deemed to be material, including, but not limited to, statements of income and expenses. Consult your attorney, accountant, or other professional advisor. All Kidder Mathews designs are the sole property of Kidder Mathews. Branded materials and layouts are not authorized for use by any other firm or person.

