

TOTEM VALLEY

BUSINESS CENTER

12805 NE 125th Way | Kirkland, WA 98034



Northwest Building ^{LLC}

HIGH QUALITY CLOSE-IN INCUBATOR INDUSTRIAL PRODUCT



BUILDING FEATURES



EXCELLENT ACCESS



GRADE-LEVEL LOADING



13' CLEAR HEIGHT



AMENITIES NEARBY



ABUNDANT PARKING



For more information or to schedule a tour, please contact:

CONNOR GILCHRIST
425.274.4286
gilchrist@broderickgroup.com

JEFF LIVINGSTON
425.274.4288
livingston@broderickgroup.com

RAWLEY HOLMBERG
425.274.4284
holmberg@broderickgroup.com

The information contained herein has been given to us by the owner or sources which we deem reliable. We have no reason to doubt its accuracy, but we do not guarantee it. Prospective tenants should carefully verify all information contained herein.

TOTEM VALLEY

BUSINESS CENTER

12805 NE 125th Way | Kirkland, WA 98034

AVAILABILITIES

BUILDING / SUITE	AVAILABLE SPACE	OFFICE SF	WHSE SF	AVAILABLE DATE
<u>B/12808</u>	2,400 RSF	1,275 RSF	1,125 RSF	60 days notice
<u>C/12919B</u>	4,158 RSF	2,389 RSF	1,769 RSF	12/1/2026
<u>F/12506/13004</u>	2,967 RSF	1,789 RSF	1,178 RSF	10/1/2026
<u>F/12524</u>	1,664 RSF	1,344 SF	320 RSF	12/1/2026
<u>G/12525</u>	2,187 RSF	1,300 RSF	887 RSF	NOW

SITE MAP



For more information or to schedule a tour, please contact:

CONNOR GILCHRIST
425.274.4286
gilchrist@broderickgroup.com

JEFF LIVINGSTON
425.274.4288
livingston@broderickgroup.com

RAWLEY HOLMBERG
425.274.4284
holmberg@broderickgroup.com

The information contained herein has been given to us by the owner or sources which we deem reliable. We have no reason to doubt its accuracy, but we do not guarantee it. Prospective tenants should carefully verify all information contained herein.

TOTEM VALLEY BUSINESS CENTER

12912 NE 125th Way | Kirkland, WA 98034

BUILDING B

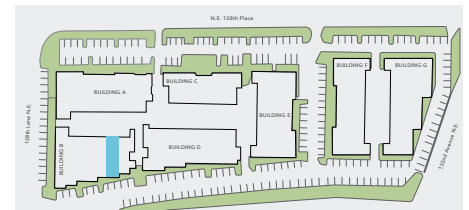
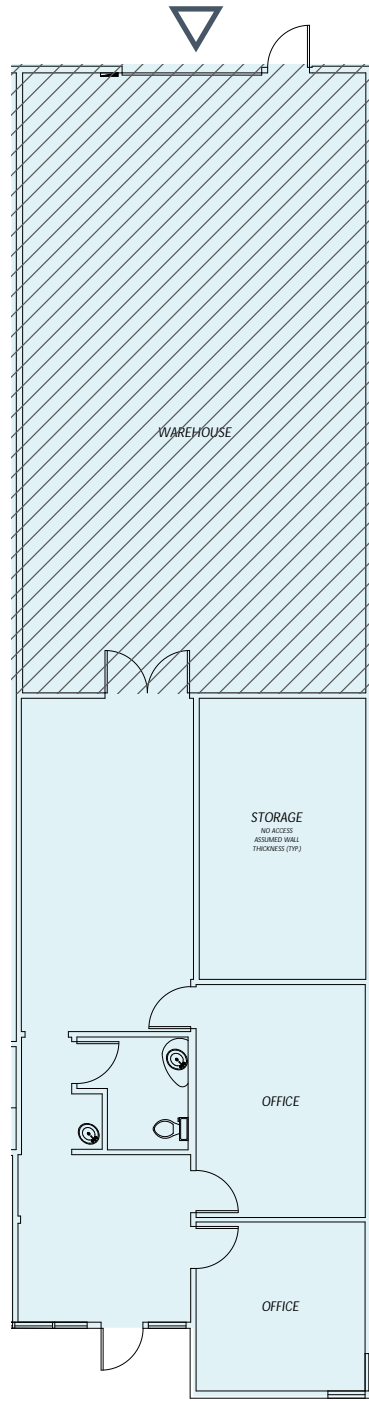
SUITE B12808

TOTAL: 2,400 RSF

WHSE: 1,125 RSF

OFFICE: 1,275 RSF

AVAILABLE WITH
60 DAYS' NOTICE



WAREHOUSE



GRADE LEVEL DOOR



↑ BACK TO AVAILABILITY



For more information or to schedule a tour, please contact:

CONNOR GILCHRIST
425.274.4286
gilchrist@broderickgroup.com

JEFF LIVINGSTON
425.274.4288
livingston@broderickgroup.com

RAWLEY HOLMBERG
425.274.4284
holmberg@broderickgroup.com

The information contained herein has been given to us by the owner or sources which we deem reliable. We have no reason to doubt its accuracy, but we do not guarantee it. Prospective tenants should carefully verify all information contained herein.

TOTEM VALLEY BUSINESS CENTER

12912 NE 125th Way | Kirkland, WA 98034

BUILDING C

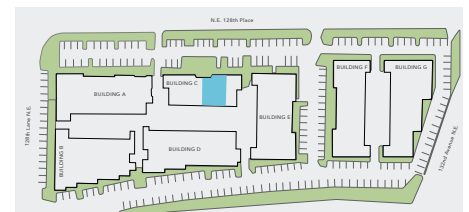
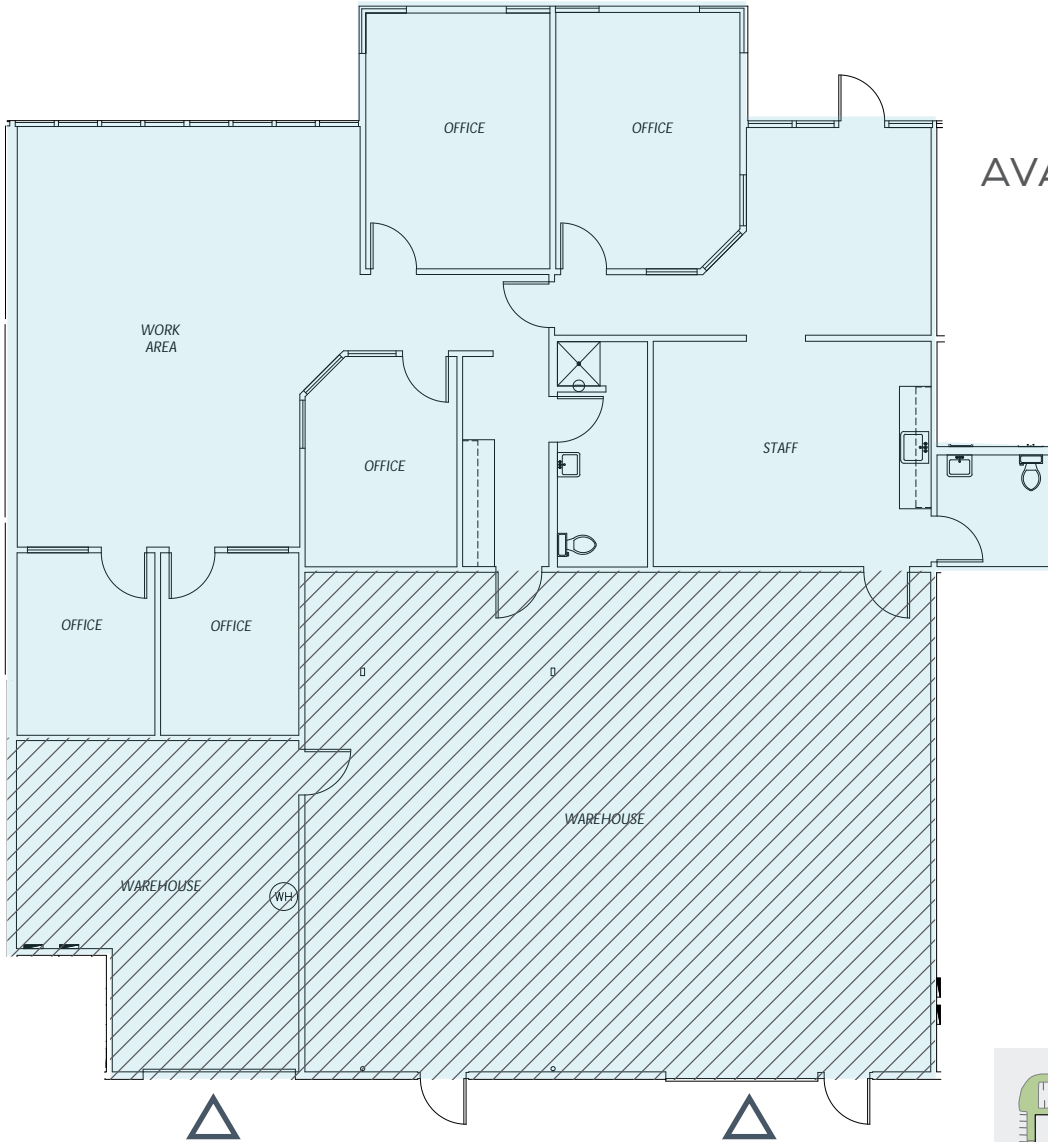
SUITE C12919B

TOTAL: 4,158 RSF

WHSE: 1,769 RSF

OFFICE: 2,389 RSF

AVAILABLE 12/1/2026



WAREHOUSE 

GRADE LEVEL DOOR 

 **BACK TO AVAILABILITY**



For more information or to schedule a tour, please contact:

CONNOR GILCHRIST
425.274.4286
gilchrist@broderickgroup.com

JEFF LIVINGSTON
425.274.4288
livingston@broderickgroup.com

RAWLEY HOLMBERG
425.274.4284
holmberg@broderickgroup.com

The information contained herein has been given to us by the owner or sources which we deem reliable. We have no reason to doubt its accuracy, but we do not guarantee it. Prospective tenants should carefully verify all information contained herein.

TOTEM VALLEY BUSINESS CENTER

12912 NE 125th Way | Kirkland, WA 98034

BUILDING F

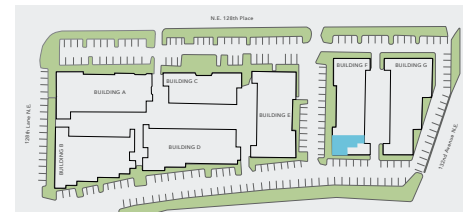
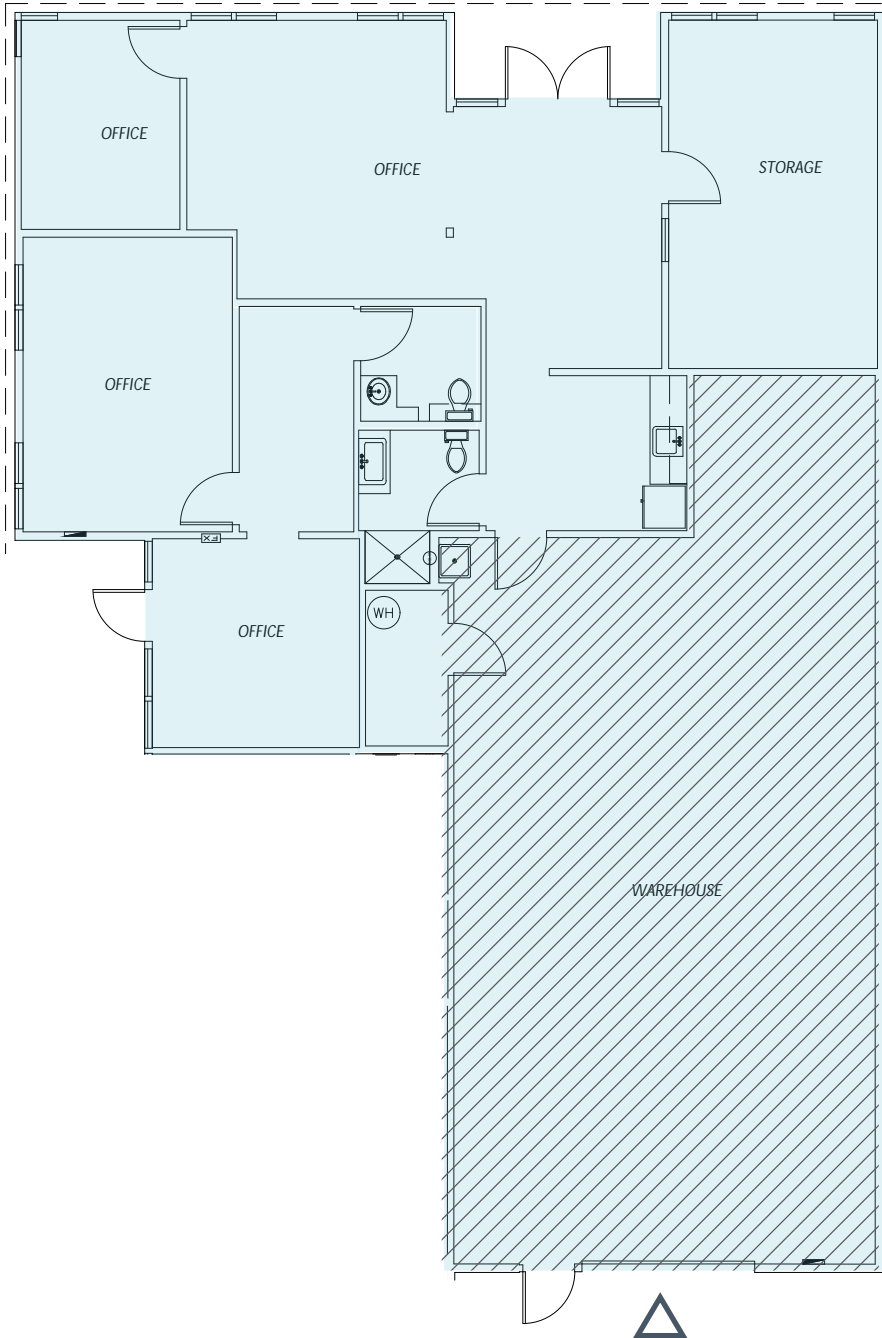
SUITE F12506/13004

TOTAL: 2,967 RSF

WHSE: 1,178 RSF

OFFICE: 1,789 RSF

AVAILABLE 10/1/2026



WAREHOUSE



GRADE LEVEL DOOR



↑ BACK TO AVAILABILITY



For more information or to schedule a tour, please contact:

CONNOR GILCHRIST
425.274.4286
gilchrist@broderickgroup.com

JEFF LIVINGSTON
425.274.4288
livingston@broderickgroup.com

RAWLEY HOLMBERG
425.274.4284
holmberg@broderickgroup.com

The information contained herein has been given to us by the owner or sources which we deem reliable. We have no reason to doubt its accuracy, but we do not guarantee it. Prospective tenants should carefully verify all information contained herein.

TOTEM VALLEY BUSINESS CENTER

12912 NE 125th Way | Kirkland, WA 98034

BUILDING F

SUITE F12524

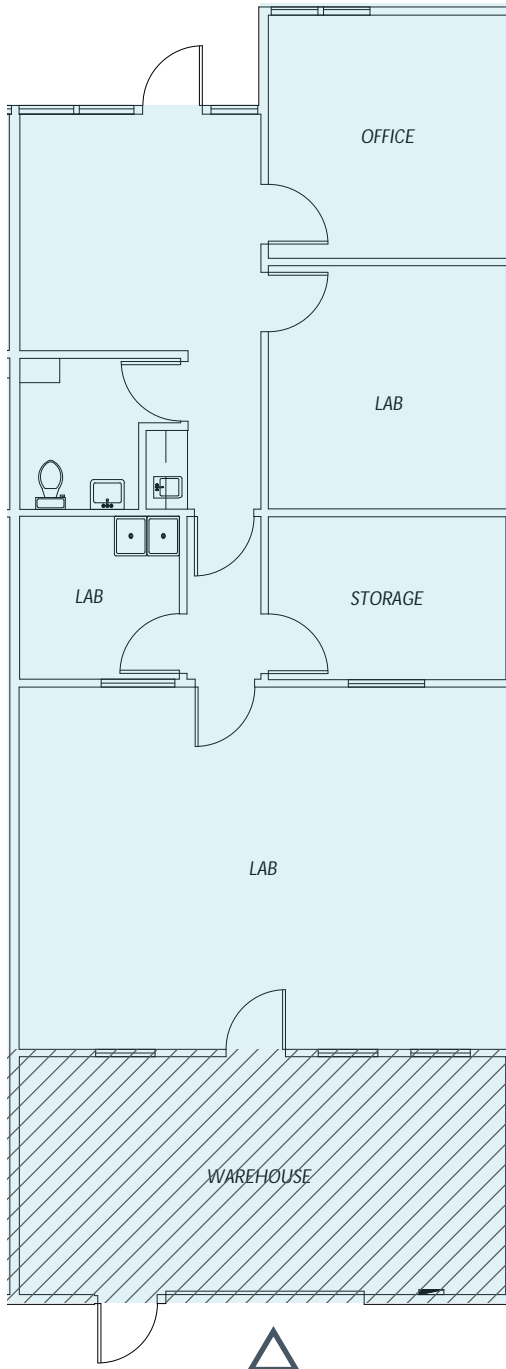
TOTAL: 1,664 RSF

WHSE: 320 RSF

OFFICE/LAB: 1,344 RSF

AVAILABLE 12/1/2026

FULLY CONDITIONED SPACE



↑ **BACK TO AVAILABILITY**



For more information or to schedule a tour, please contact:

CONNOR GILCHRIST
425.274.4286
gilchrist@broderickgroup.com

JEFF LIVINGSTON
425.274.4288
livingston@broderickgroup.com

RAWLEY HOLMBERG
425.274.4284
holmberg@broderickgroup.com

The information contained herein has been given to us by the owner or sources which we deem reliable. We have no reason to doubt its accuracy, but we do not guarantee it. Prospective tenants should carefully verify all information contained herein.

TOTEM VALLEY BUSINESS CENTER

12912 NE 125th Way | Kirkland, WA 98034

BUILDING G

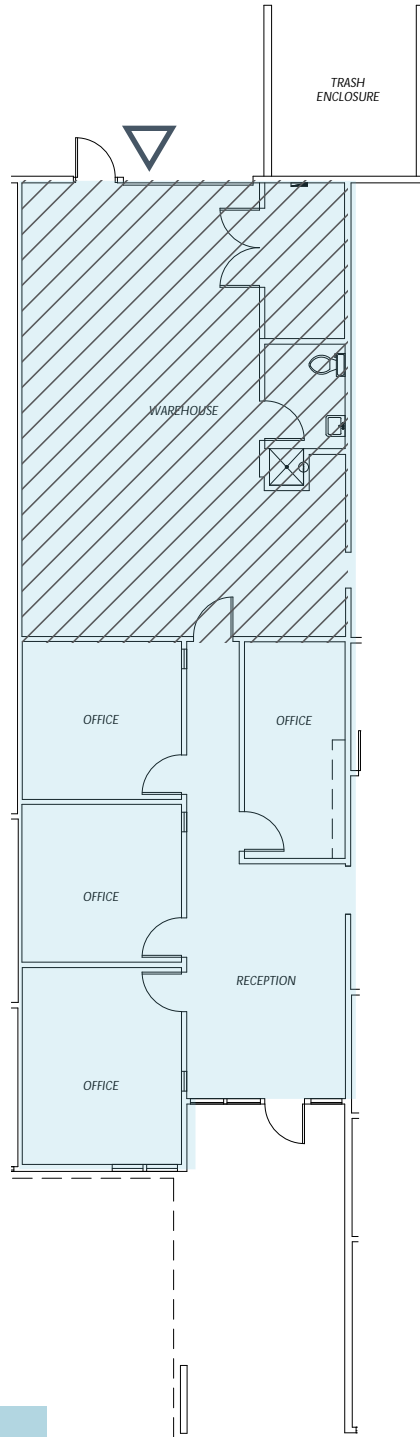
SUITE G12525

TOTAL: 2,187 RSF

WHSE: 887 RSF

OFFICE: 1,300 RSF

AVAILABLE NOW



↑ BACK TO AVAILABILITY



For more information or to schedule a tour, please contact:

CONNOR GILCHRIST
425.274.4286
gilchrist@broderickgroup.com

JEFF LIVINGSTON
425.274.4288
livingston@broderickgroup.com

RAWLEY HOLMBERG
425.274.4284
holmberg@broderickgroup.com

The information contained herein has been given to us by the owner or sources which we deem reliable. We have no reason to doubt its accuracy, but we do not guarantee it. Prospective tenants should carefully verify all information contained herein.

TOTEM VALLEY BUSINESS CENTER

12805 NE 125th Way | Kirkland, WA 98034

AREA AMENITIES



- | | | |
|--------------------------------|--|--|
| 1 QFC | 11 Fred Meyer | 21 Rite Aid |
| 2 Five Guys | 12 EvergreenHealth Medical Center | 22 LA Fitness |
| 3 Courtyard by Marriott | 13 Key Bank | 23 Northwest Cellars |
| 4 Papa Murphy's | 14 The Village at Totem Lake | 24 Totem Square Shopping Center |
| 5 Olive Garden | 15 Chipotle | 25 Subway |
| 6 Starbucks | 16 MOD Pizza | 26 7-Eleven |
| 7 Azteca | 17 Wells Fargo | 27 Teriyaki Plus |
| 8 Wendy's | 18 Bank of America | 28 Shari's |
| 9 Lowe's | 19 Chick-fil-A | 29 Gold's Gym |
| 10 Jimmy John's | 20 Comfort Inn | |

For more information or to schedule a tour, please contact:



CONNOR GILCHRIST
425.274.4286
gilchrist@broderickgroup.com

JEFF LIVINGSTON
425.274.4288
livingston@broderickgroup.com

RAWLEY HOLMBERG
425.274.4284
holmberg@broderickgroup.com

The information contained herein has been given to us by the owner or sources which we deem reliable. We have no reason to doubt its accuracy, but we do not guarantee it. Prospective tenants should carefully verify all information contained herein.