



# SAFECO PLAZA

1001 FOURTH AVENUE, SEATTLE, WA

**BRODERICK**  
• GROUP •

**bxp**

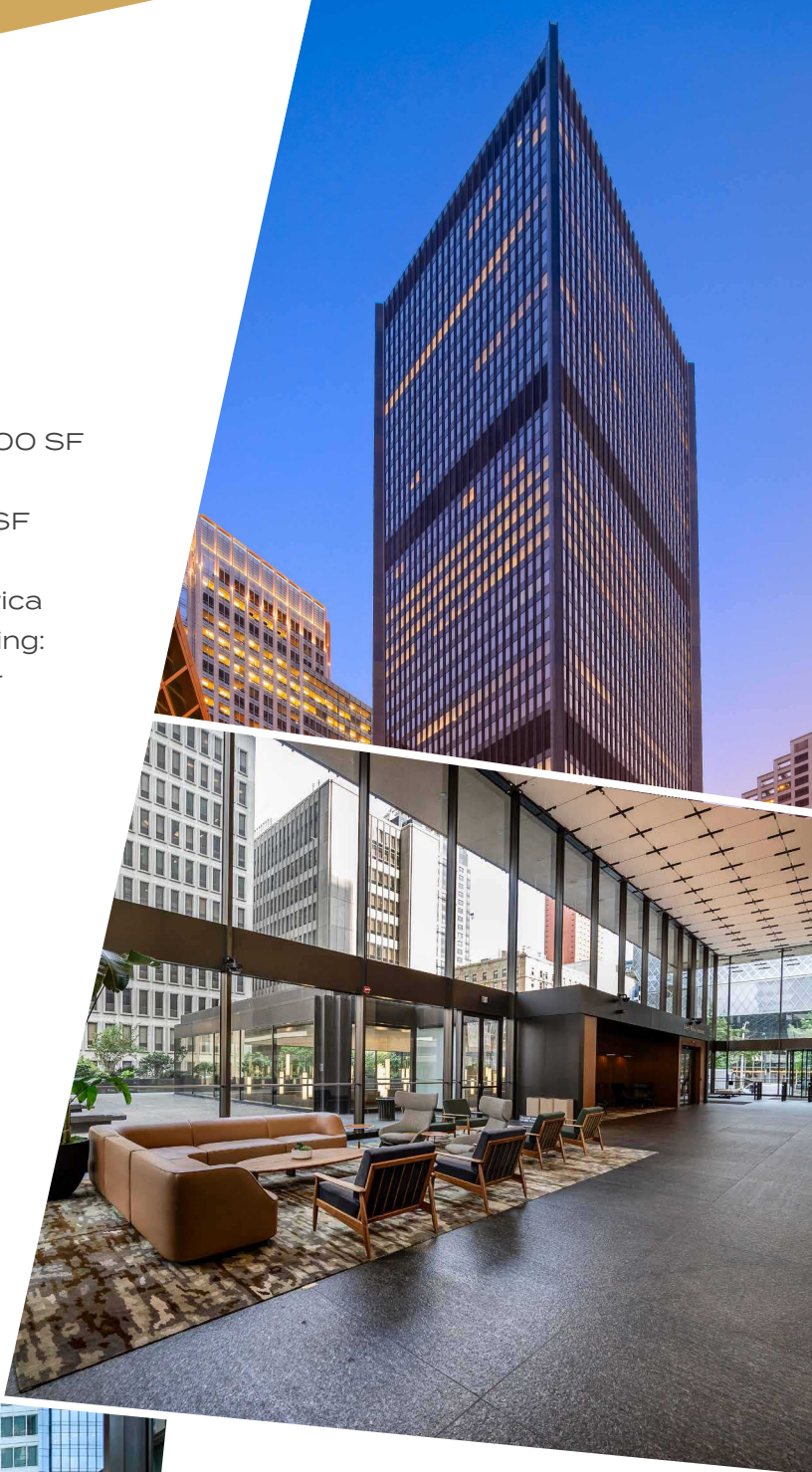


## AT A GLANCE

- 762,631 SF Class A office building
- Average floor plate size is approximately 20,000 SF
- 50 story office building
- 5 levels of underground parking – 0.7:1,000 RSF parking ratio
- Iconic Grounds coffee shop and Bank of America
- 35,000 SF of building specific amenities including:
  - Large conference room and training center
  - Executive boardroom
  - Private client library
  - Fitness Club with showers and locker rooms
  - Secured Bike Hub with dedicated entrance with shower and locker rooms



## BUILDING CERTIFIED



## NEW TURNSTILES

Safeco Plaza's new turnstile system offers secure, touchless access with sleek design and Apple Wallet integration—allowing clients to enter using iPhones or Apple Watches, no physical badge needed.

[VIEW VIRTUAL TOUR](#)



## ICONIC GROUNDS

Newly opened, Iconic Grounds Coffee brings fresh energy to Safeco Plaza with locally crafted espresso, gourmet snacks, and global flavors—all in a sleek, modern setting at the heart of downtown Seattle.



## CONFERENCE CENTER

Safeco Plaza offers versatile conference rooms for meetings, presentations, and events, with full AV support and capacity for up to 120 guests

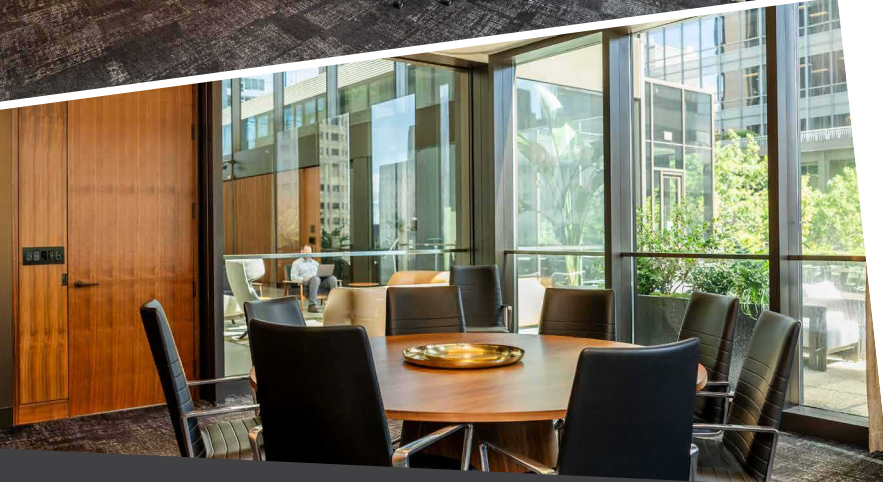
[VIEW VIRTUAL TOUR](#)



## EXECUTIVE BOARDROOM

Safeco Plaza's executive boardroom offers a refined, professional setting ideal for high-level meetings and strategic discussions. It's part of the building's full-service conference center and premium amenities.

[VIEW VIRTUAL TOUR](#)



## LIBRARY

The private client library at Safeco Plaza provides a quiet, focused environment perfect for individual work or confidential consultations, complementing the building's upscale offerings.

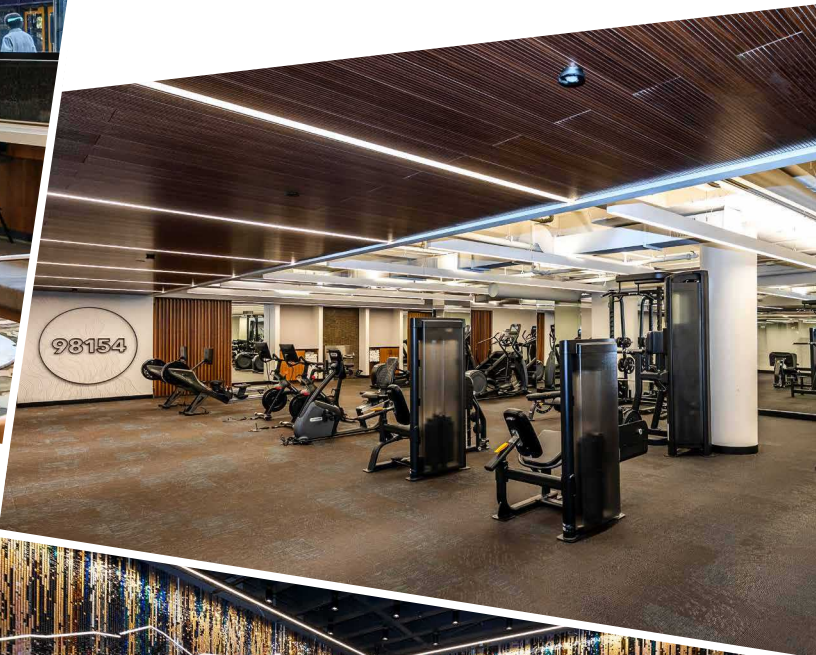
[VIEW VIRTUAL TOUR](#)



## THIRD AVE LOBBY

The Third Avenue lobby at Safeco Plaza offers a sleek, modern entrance with touchless turnstiles and a spacious design—setting the tone for a premium office experience.

[VIEW VIRTUAL TOUR](#)



## FITNESS CLUB

The state-of-the-art fitness club at Safeco Plaza offers top-tier equipment, dedicated studio space, and modern locker rooms, providing clients with a convenient and energizing wellness experience just steps from their office.

[VIEW VIRTUAL TOUR](#)

## BIKE HUB

Safeco Plaza's Bike Hub offers secure storage, repair stations, and easy access to downtown bike lanes, ensuring a seamless cycling experience for clients.

[VIEW VIRTUAL TOUR](#)



## LOCKER ROOMS

Modern locker rooms with private showers, spacious changing areas, and secure storage provide comfort and convenience for busy professionals.

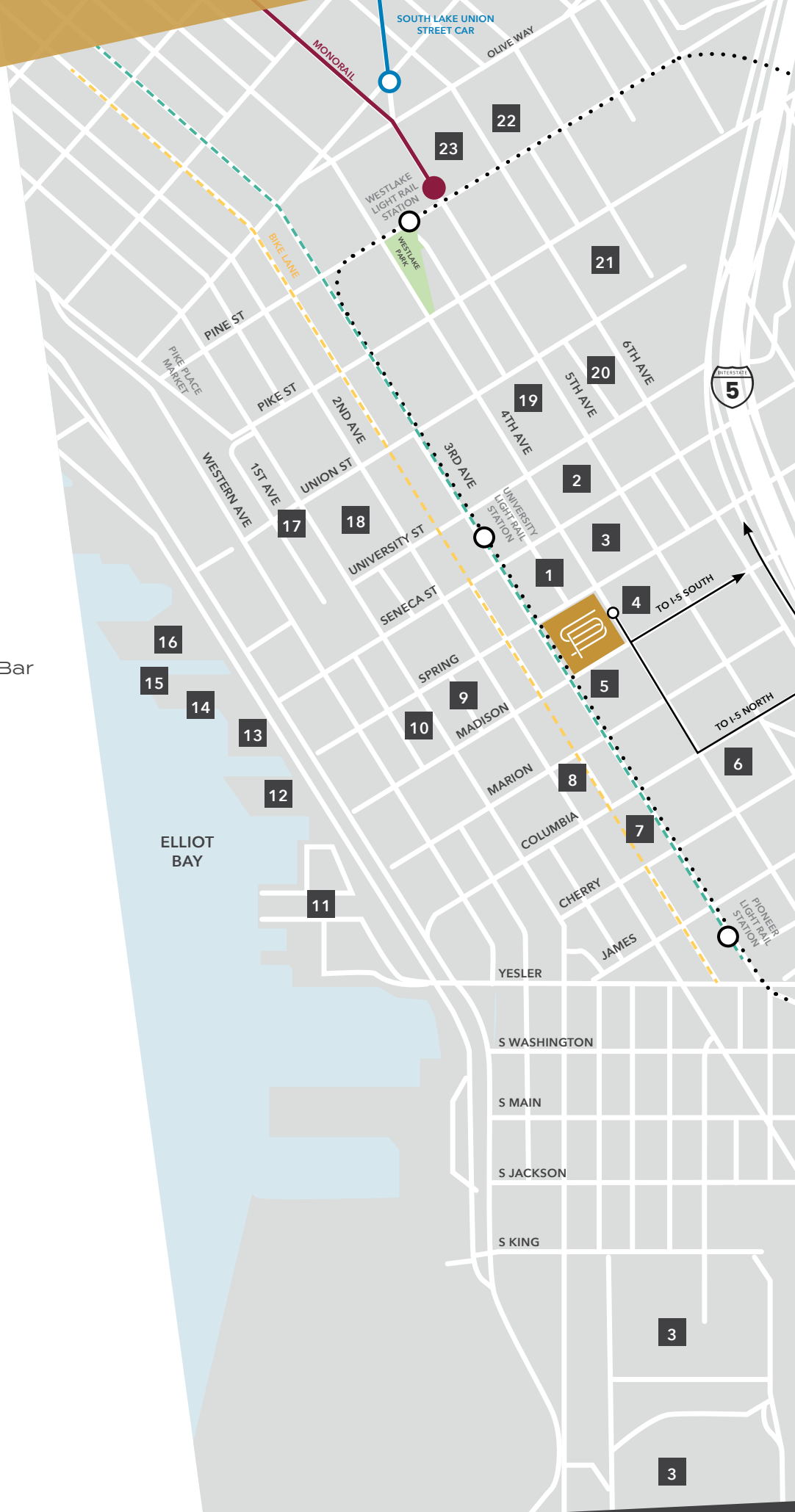




# NEARBY AMENITIES

1. Columbia Food
2. W Living Room
3. Seattle Public Library
4. Vault Cafe
5. Market Fresh
6. Monorail Espresso  
Columbia Tower Club  
Jimmy John's  
Juicy Cafe  
Evergreens
7. Pegasus Coffee Bar
8. Metropolitan Grill
9. All Water Seafood & Oyster Bar
10. Storyville Coffee  
Bookstore Bar & Cafe
11. Seattle Ferry Terminal
12. Ivar's  
Great State Burger
13. Starbucks
14. Elliott's Oyster House  
Wing Dome
15. The Seattle Great Wheel  
The Crab Pot
16. Seattle Aquarium
17. Pike Place Market
18. Seattle Art Museum
19. Mendocino Farms  
The Fonte Bar  
Fogo de Chao
20. Museum of Illusions  
Washington Athletic Club
21. Seattle Convention Center
22. Pacific Place
23. Nordstrom

- Bike Lane
- Link Light Rail
- Bus Lane
- Monorail
- SLU Street Car





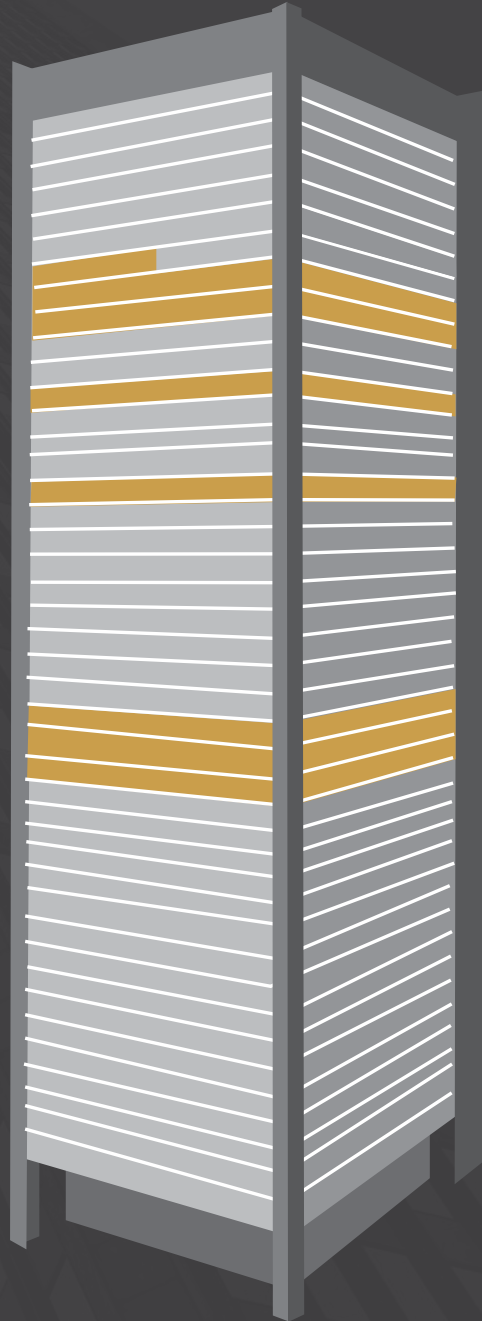
# SAFECO PLAZA

1001 FOURTH AVENUE, SEATTLE, WA

## BUILDING AVAILABILITY

| TOUR | FLOOR     | SUITE | RSF    | AVAILABLE |
|------|-----------|-------|--------|-----------|
|      | <u>41</u> | 4130  | 1,757  | NOW       |
|      | <u>40</u> | 4000  | 20,333 | NOW       |
|      | <u>39</u> | 3900  | 20,333 | NOW       |
|      | <u>36</u> | 3600  | 20,816 | NOW       |
|      | <u>32</u> | 3200  | 19,795 | NOW       |
|      | <u>23</u> | 2300  | 19,790 | NOW       |
|      | <u>22</u> | 2200  | 19,795 | NOW       |
|      | <u>21</u> | 2100  | 19,789 | NOW       |

47  
46  
45  
44  
43  
42  
41  
40  
39  
38  
37  
36  
35  
34  
33  
32  
31  
30  
29  
28  
27  
26  
25  
24  
23  
22  
21  
20  
19  
18  
17  
16  
15  
14  
13  
12  
11  
10  
9  
8  
7  
6  
5  
4



FLOORS  
21-23  
CONTIGUOUS  
FOR  
59,374 RSF

The information contained herein has been given to us by the owner or sources that we deem reliable. We have no reason to doubt its accuracy, but we do not guarantee it. Prospective tenants should carefully verify all information contained herein.



**DAVID GREENWOOD**  
206.838.7635  
greenwood@broderickgroup.com

**DAMON MCCARTNEY**  
206.838.7633  
mccartney@broderickgroup.com

**LARRY ALMELEH**  
206.910.0859  
almeleh@broderickgroup.com

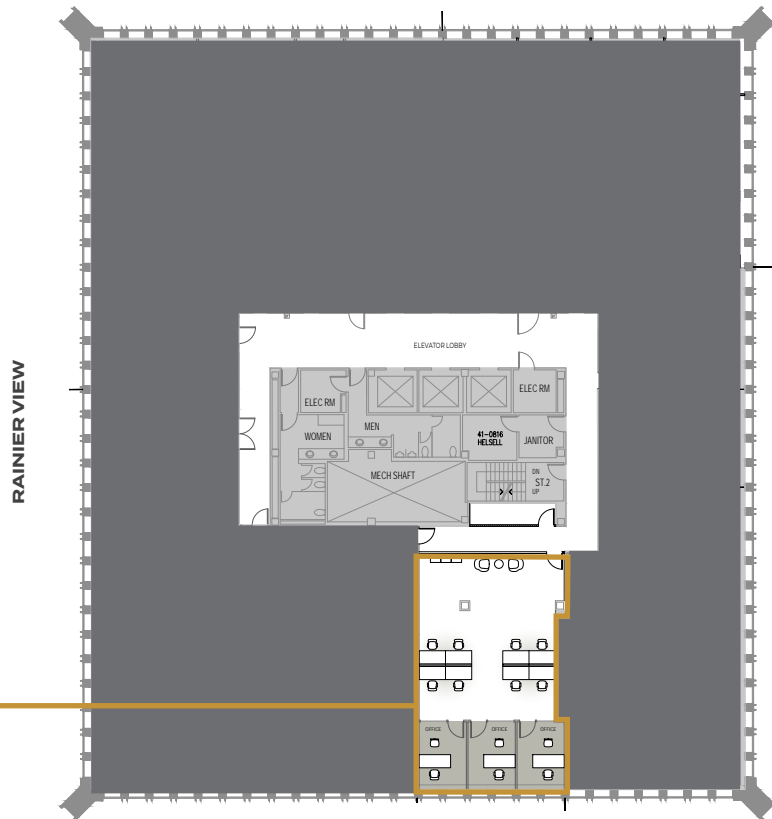


# SAFECO PLAZA

1001 FOURTH AVENUE, SEATTLE, WA

## FLOOR 41 | AVAILABLE NOW

PUGET SOUND VIEW



RAINIER VIEW

### SUITE 4130

1,757 RSF

AVAILABLE NOW

[▶ VIEW VIRTUAL TOUR](#)



SUITE 4130



SUITE 4130



RETURN TO  
AVAILABLE  
SPACE



DAVID GREENWOOD

206.838.7635

greenwood@broderickgroup.com

DAMON MCCARTNEY

206.838.7633

mccartney@broderickgroup.com

LARRY ALMELEH

206.910.0859

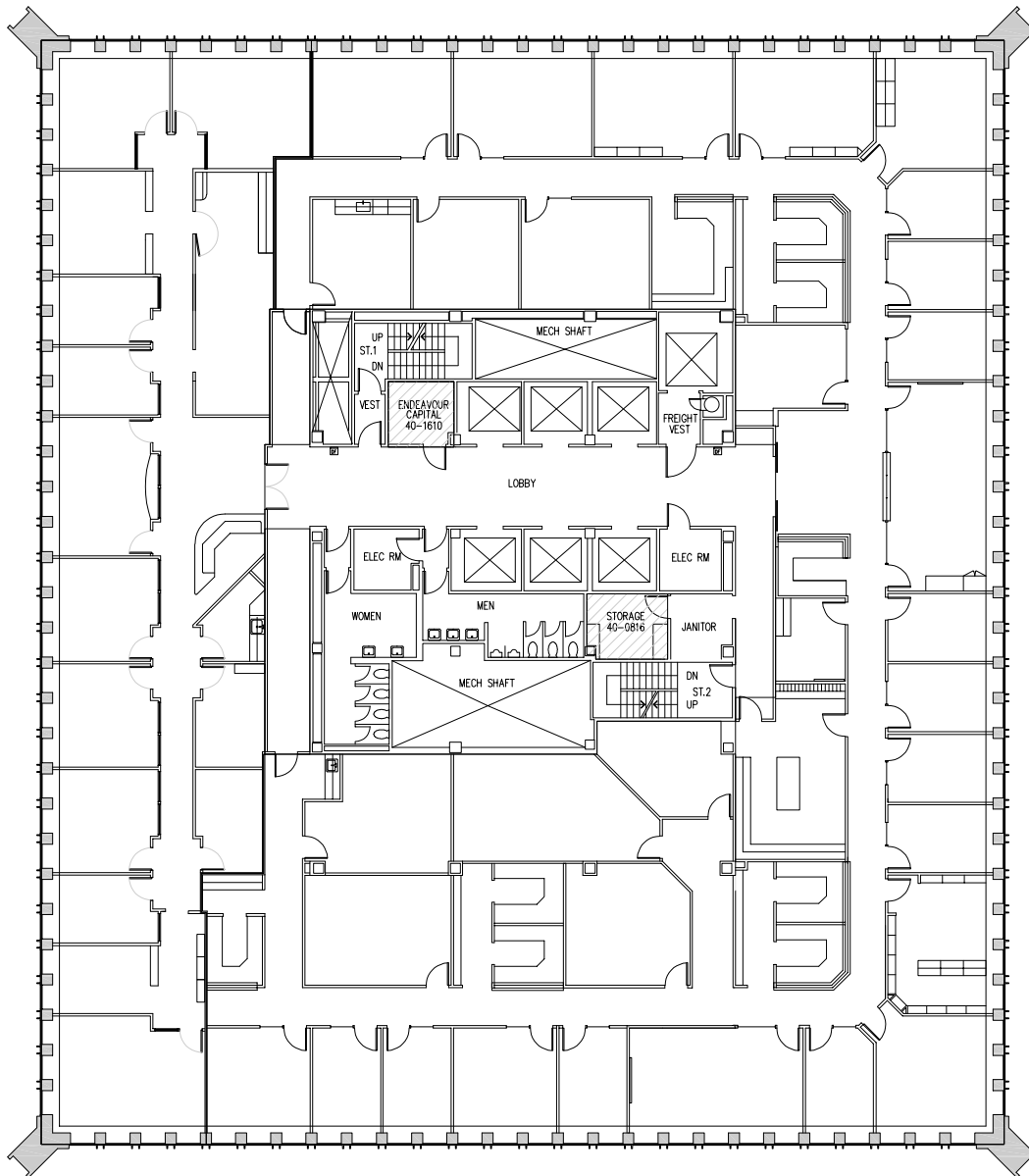
almeleh@broderickgroup.com



# SAFECO PLAZA

1001 FOURTH AVENUE, SEATTLE, WA

FLOOR 40 | 20,333 RSF | AVAILABLE NOW



↑  
RETURN TO  
AVAILABLE  
SPACE



**DAVID GREENWOOD**

206.838.7635  
greenwood@broderickgroup.com

**DAMON MCCARTNEY**

206.838.7633  
mccartney@broderickgroup.com

**LARRY ALMELEH**

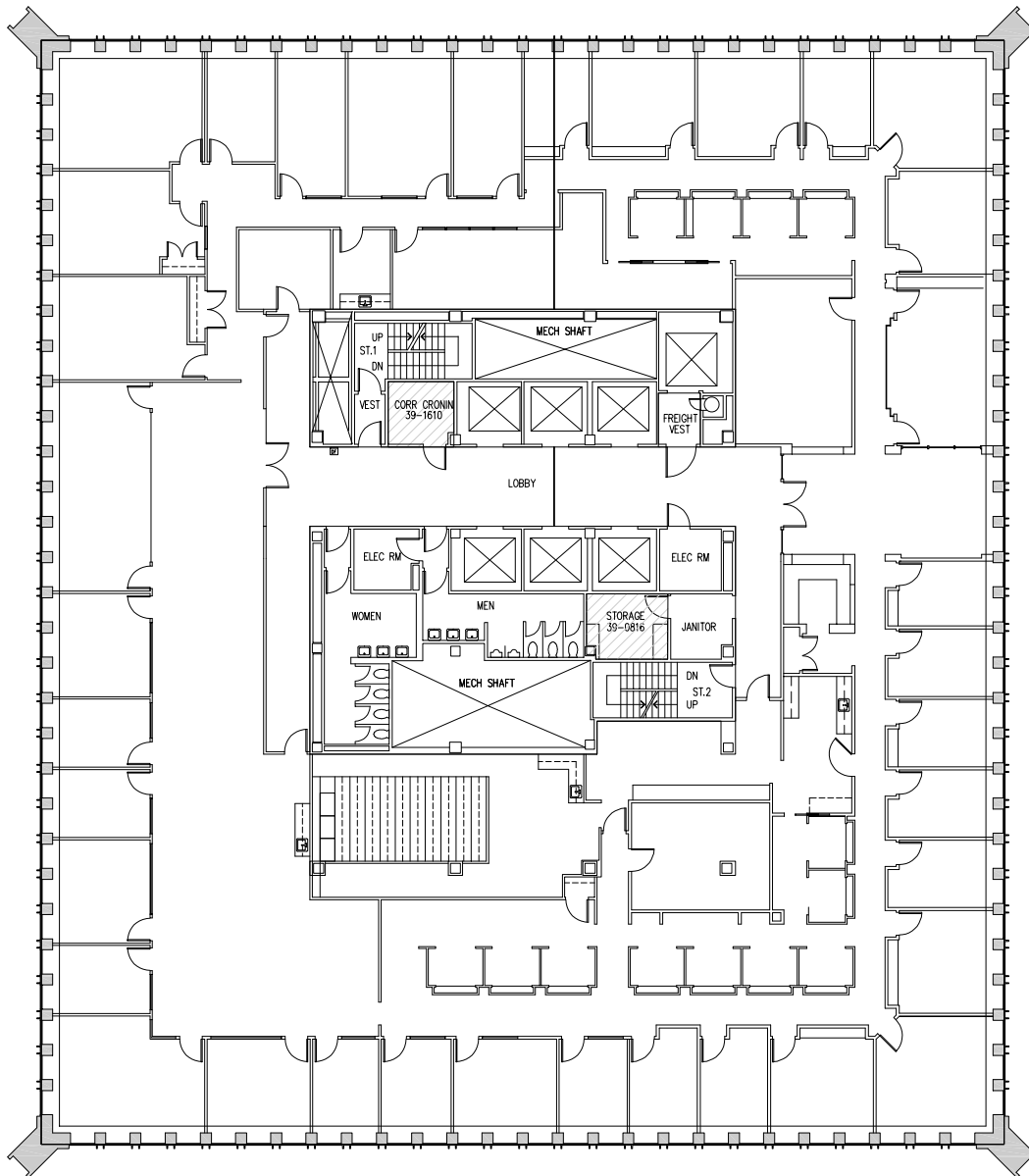
206.910.0859  
almeleh@broderickgroup.com



# SAFECO PLAZA

1001 FOURTH AVENUE, SEATTLE, WA

FLOOR 39 | 20,333 RSF | AVAILABLE NOW



↑  
RETURN TO  
AVAILABLE  
SPACE



**DAVID GREENWOOD**

206.838.7635  
greenwood@broderickgroup.com

**DAMON MCCARTNEY**

206.838.7633  
mccartney@broderickgroup.com

**LARRY ALMELEH**

206.910.0859  
almeleh@broderickgroup.com

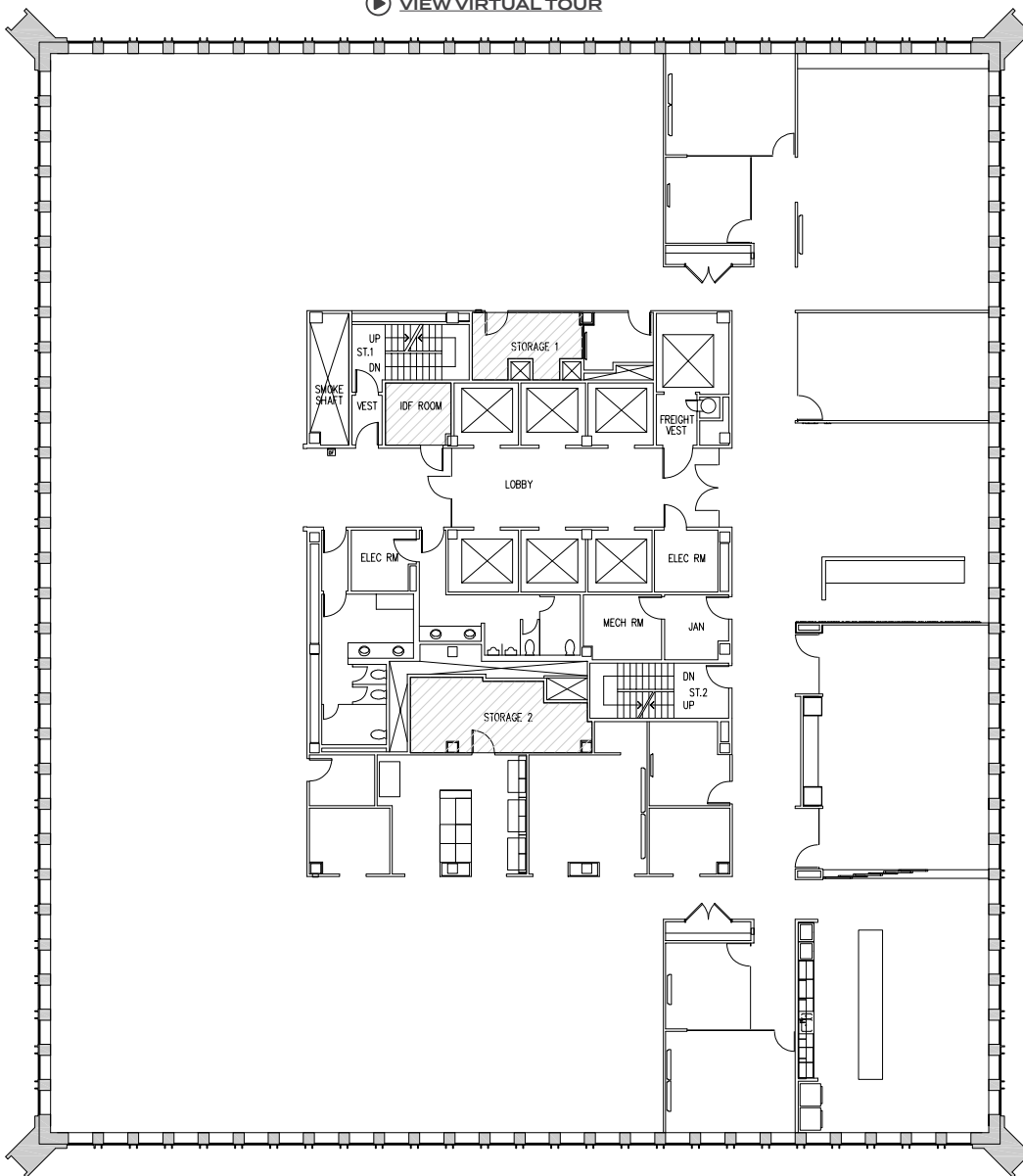


# SAFECO PLAZA

1001 FOURTH AVENUE, SEATTLE, WA

FLOOR 36 | 20,816 RSF | AVAILABLE NOW

[▶ VIEW VIRTUAL TOUR](#)



↑  
RETURN TO  
AVAILABLE  
SPACE



**DAVID GREENWOOD**

206.838.7635

greenwood@broderickgroup.com

**DAMON MCCARTNEY**

206.838.7633

mccartney@broderickgroup.com

**LARRY ALMELEH**

206.910.0859

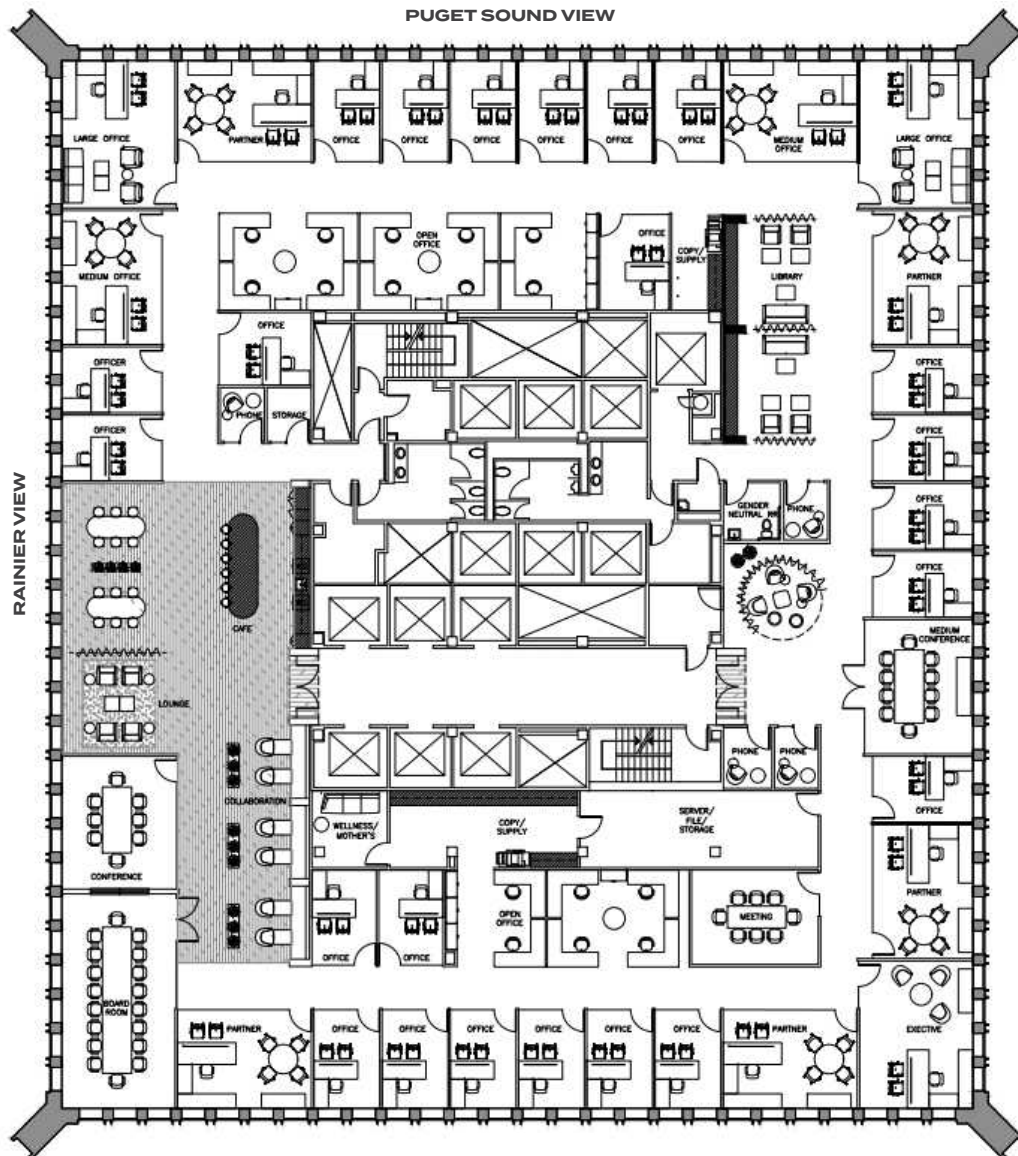
almeleh@broderickgroup.com



# SAFECO PLAZA

1001 FOURTH AVENUE, SEATTLE, WA

FLOOR 32 | 19,795 RSF | AVAILABLE NOW



\*EXAMPLE FLOORPLAN: CURRENTLY COLD SHELL

[▶ VIEW VIRTUAL TOUR](#)



**DAVID GREENWOOD**  
206.838.7635  
greenwood@broderickgroup.com

**DAMON MCCARTNEY**  
206.838.7633  
mccartney@broderickgroup.com

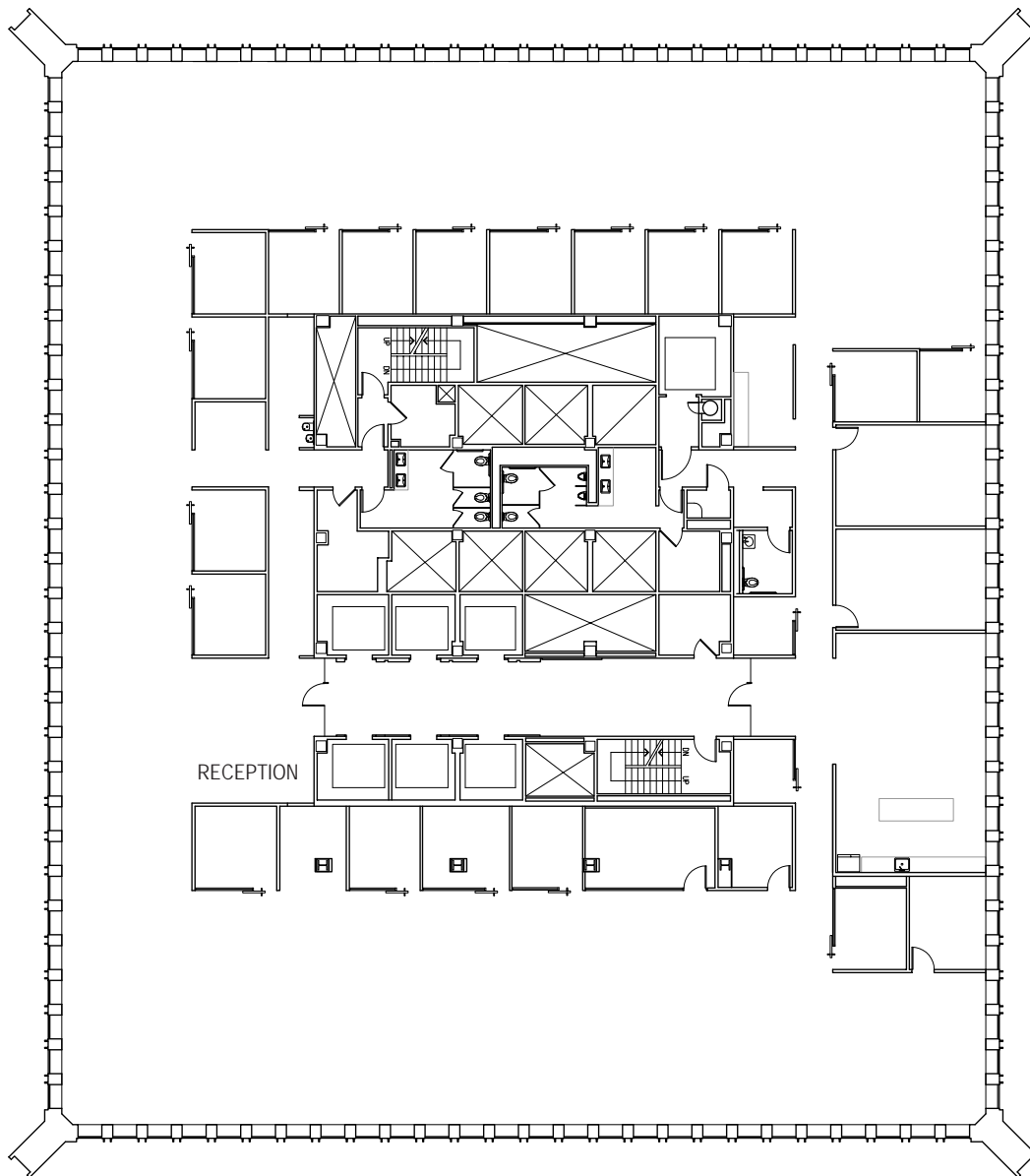
**LARRY ALMELEH**  
206.910.0859  
almeleh@broderickgroup.com



# SAFECO PLAZA

1001 FOURTH AVENUE, SEATTLE, WA

FLOOR 23 | 19,790 RSF | AVAILABLE NOW



RETURN TO  
AVAILABLE  
SPACE

 [VIEW VIRTUAL TOUR](#)



**DAVID GREENWOOD**

206.838.7635

[greenwood@broderickgroup.com](mailto:greenwood@broderickgroup.com)

**DAMON MCCARTNEY**

206.838.7633

[mccartney@broderickgroup.com](mailto:mccartney@broderickgroup.com)

**LARRY ALMELEH**

206.910.0859

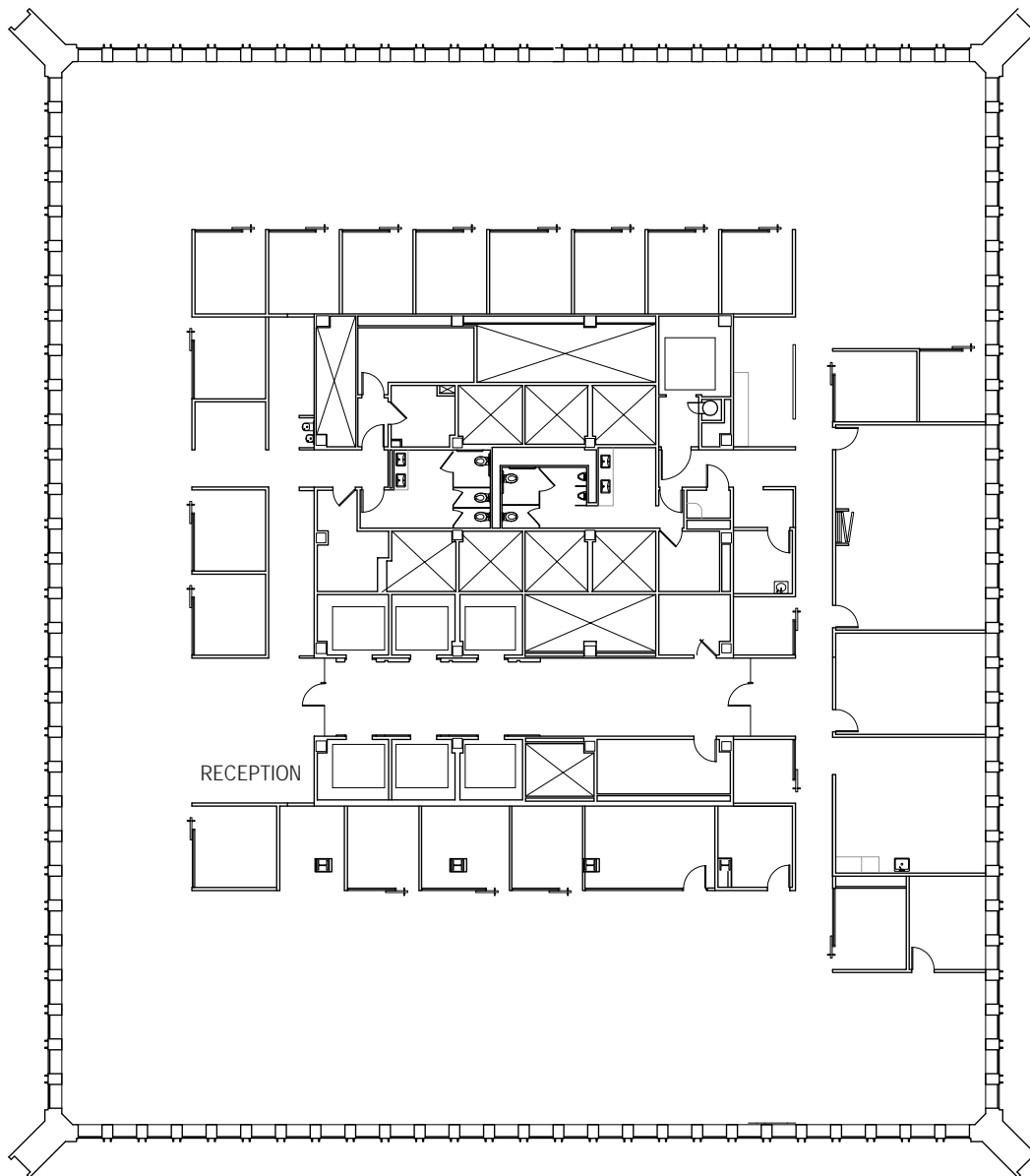
[almeleh@broderickgroup.com](mailto:almeleh@broderickgroup.com)



# SAFECO PLAZA

1001 FOURTH AVENUE, SEATTLE, WA

FLOOR 22 | 19,795 RSF | AVAILABLE NOW



↑  
RETURN TO  
AVAILABLE  
SPACE



**DAVID GREENWOOD**  
206.838.7635  
greenwood@broderickgroup.com

**DAMON MCCARTNEY**  
206.838.7633  
mccartney@broderickgroup.com

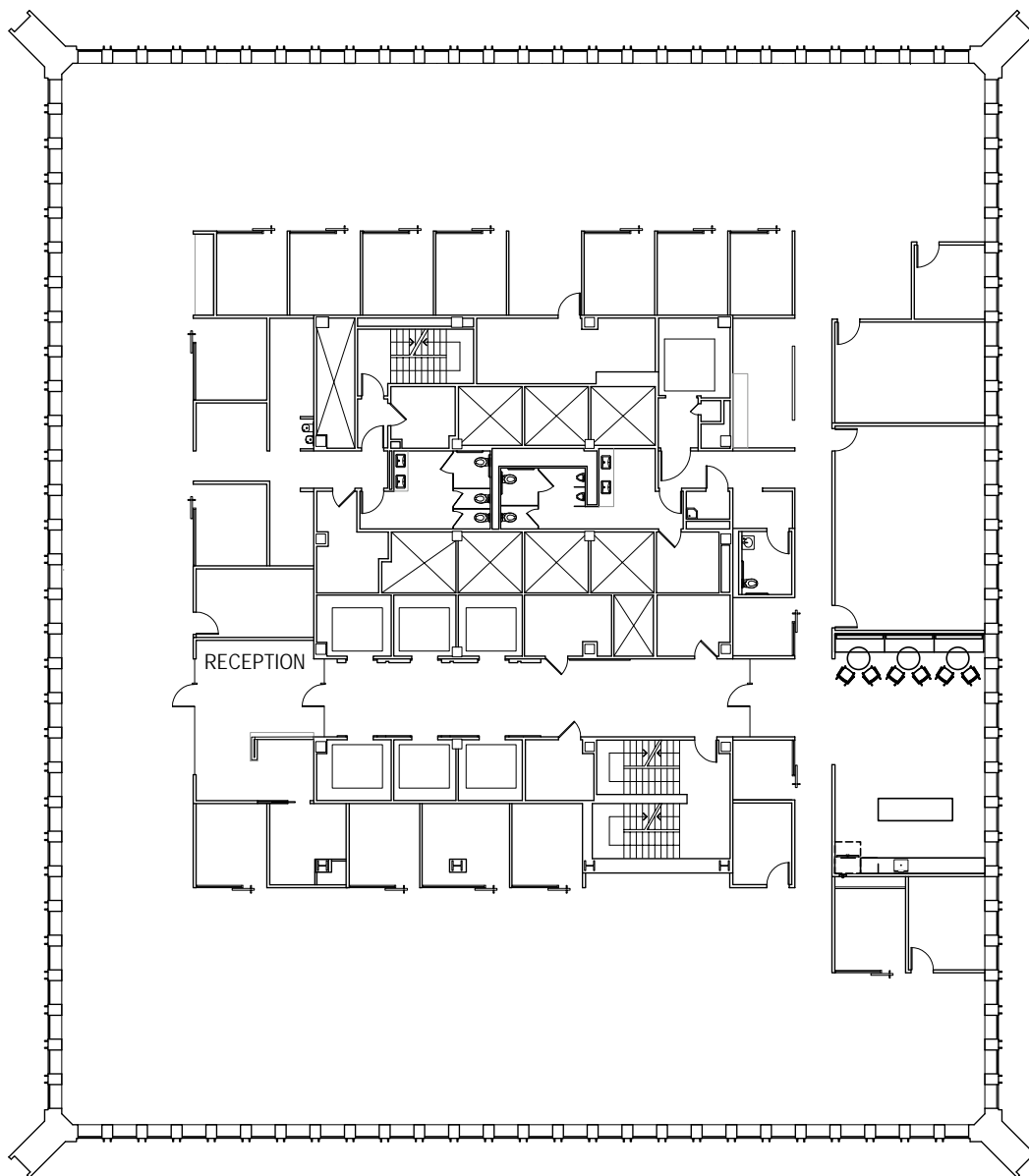
**LARRY ALMELEH**  
206.910.0859  
almeleh@broderickgroup.com



# SAFECO PLAZA

1001 FOURTH AVENUE, SEATTLE, WA

FLOOR 21 | 19,789 RSF | AVAILABLE NOW



↑  
RETURN TO  
AVAILABLE  
SPACE



**DAVID GREENWOOD**

206.838.7635

greenwood@broderickgroup.com

**DAMON MCCARTNEY**

206.838.7633

mccartney@broderickgroup.com

**LARRY ALMELEH**

206.910.0859

almeleh@broderickgroup.com



# SAFECO PLAZA

1001 FOURTH AVENUE, SEATTLE, WA



**DAVID GREENWOOD**

206.838.7635

[greenwood@broderickgroup.com](mailto:greenwood@broderickgroup.com)

**DAMON MCCARTNEY**

206.838.7633

[mccartney@broderickgroup.com](mailto:mccartney@broderickgroup.com)

**LARRY ALMELEH**

206.910.0859

[almeleh@broderickgroup.com](mailto:almeleh@broderickgroup.com)