



Willows Commerce Center

9165 Willows Rd., Redmond, WA

NOW LEASING

**WHOLESALE SALES & SERVICE
COMMERCIAL -
INDUSTRIAL SHOWROOM
AUTOMOTIVE**

FEATURES

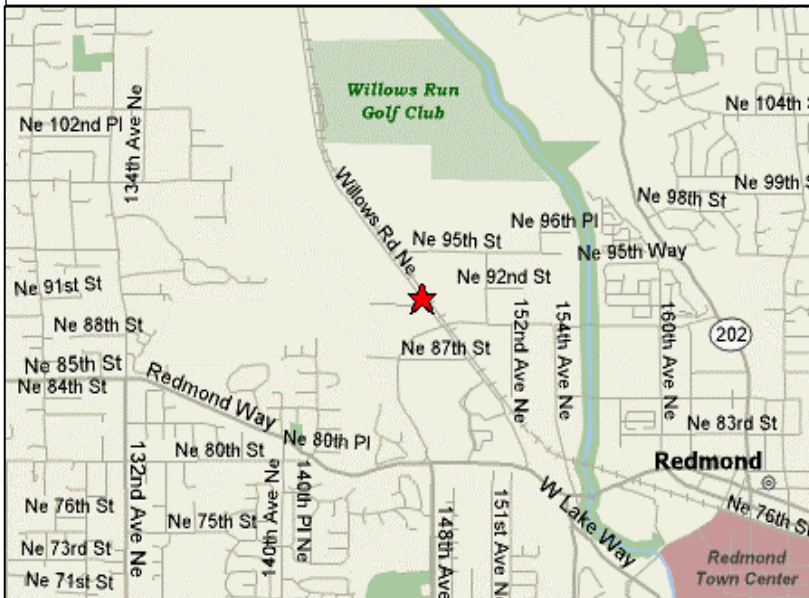
Space Available: 2,049 SF

Prime Exposure: Willows Rd.

Traffic 2018: Willows Rd. 28,770 ADT

Lease Rate: \$2.00/Sq. Ft./Mo. NNN

Site Plan: Attached

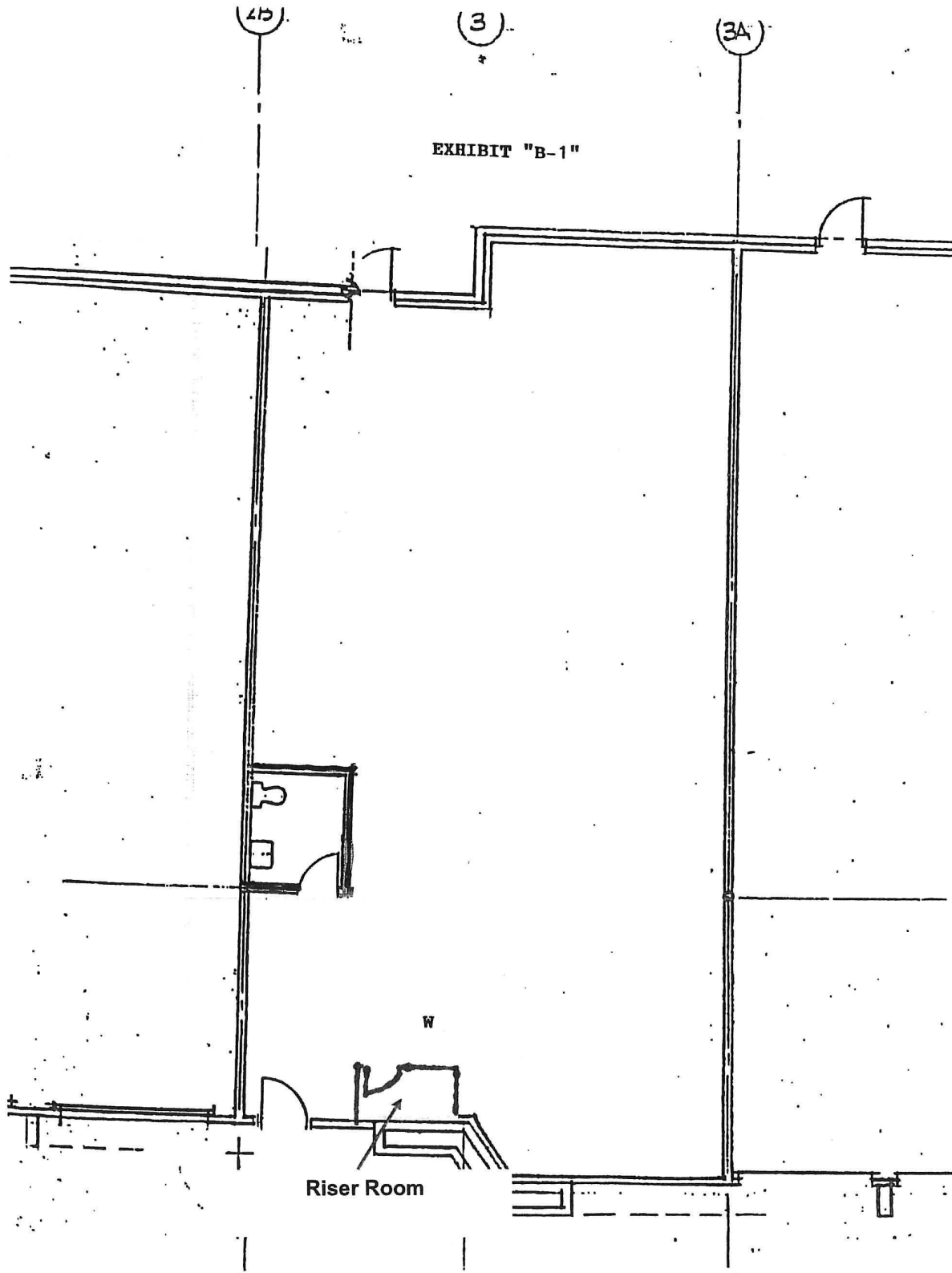


Robert B. Chadek
2050 112th Avenue SE, Suite 230
Bellevue, WA 98004
(425) 453-5354
rob@westernadvisors.com

The information contained herein has been obtained from sources believed to be reliable. While we do not doubt its accuracy, we have not verified it and make no guarantee, warranty or representation about it. It is your responsibility to independently confirm its accuracy and completeness. Any projections, opinions or estimates are for example only and do not represent the current or future performance of the property. The value of this transaction to you depends on tax and other factors which should be evaluated by your tax, financial and legal advisors. You and your advisors should conduct a careful, independent investigation of the property to determine the suitability of the property for your needs.

9165 WILLOWS COMMERCE CENTER

FLOOR PLAN

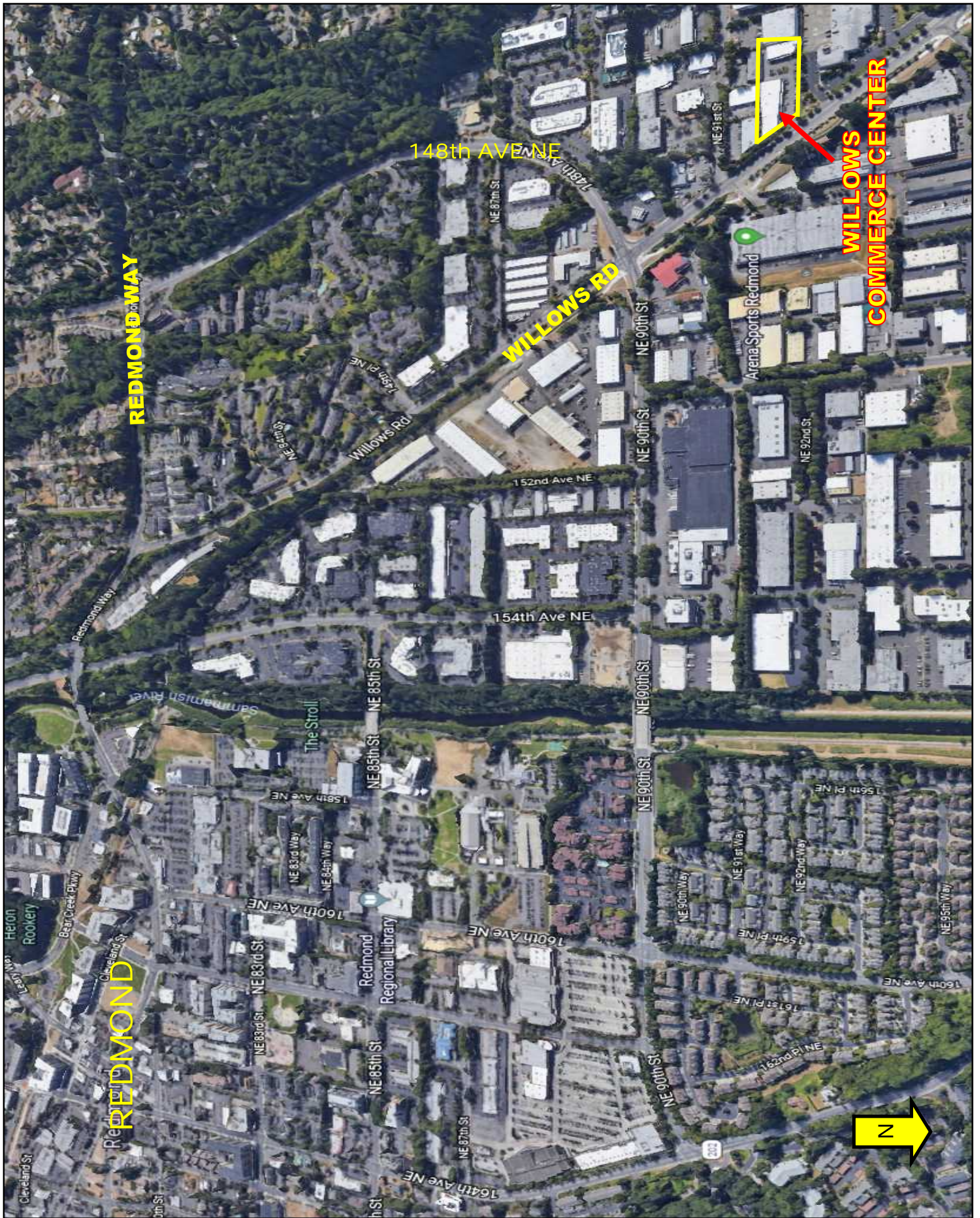


Willows Commerce Center
9165 Willows Road
Redmond, WA 98052



LEGAL DESCRIPTION:

The North 149.81 feet of the North half of the South half of the Southeast quarter of the Northeast quarter of Section 3, Township 25 North, Range 5 East, W.M., in King County, Washington, lying Westerly of York Road, except the West 589.74 feet thereof.



The information contained herein has been obtained from sources believed to be reliable. While we do not doubt its accuracy, we have not verified it and make no guarantee, warranty or representation about it. It is your responsibility to independently confirm its accuracy and completeness. Any projections, opinions or estimates are for example only and do not represent the current or future performance of the property. The value of this transaction to you depends on tax and other factors which should be evaluated by your tax, financial and legal advisors. You and your advisors should conduct a careful, independent investigation of the property to determine the suitability of the property for your needs.