

# LAKWOOD INDUSTRIAL PARK

100TH ST SW & 47TH AVE SW | LAKEWOOD, WA



**SCOTT PRICE**

253.279.3710

sprice@neilwalter.com

**THERON MEIER**

253.988.2649

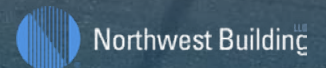
tmeier@neilwalter.com

**BRUCE VALENTINE**

253.606.4830

bvalentine@neilwalter.com

*professionally  
managed/owned by:*



All information references in this document are approximate. The information contained herein is contained from sources deemed reliable. It is provided without representation, warranty, or guarantee, expressed or implied as to accuracy. Prospective buyer or tenant should conduct its own independent investigation relating to the property, government codes and regulations, allowed uses, and all other matters, regardless of whether they are referred to or contained in this document.

**PROPERTY HIGHLIGHTS**

**27-BUILDING CAMPUS**

**±2.4M TOTAL SF**

**I-5 ACCESS**

**SR-512 CONNECTIVITY**

**TRUCK MANEUVERABILITY**

**ON-SITE MANAGEMENT**

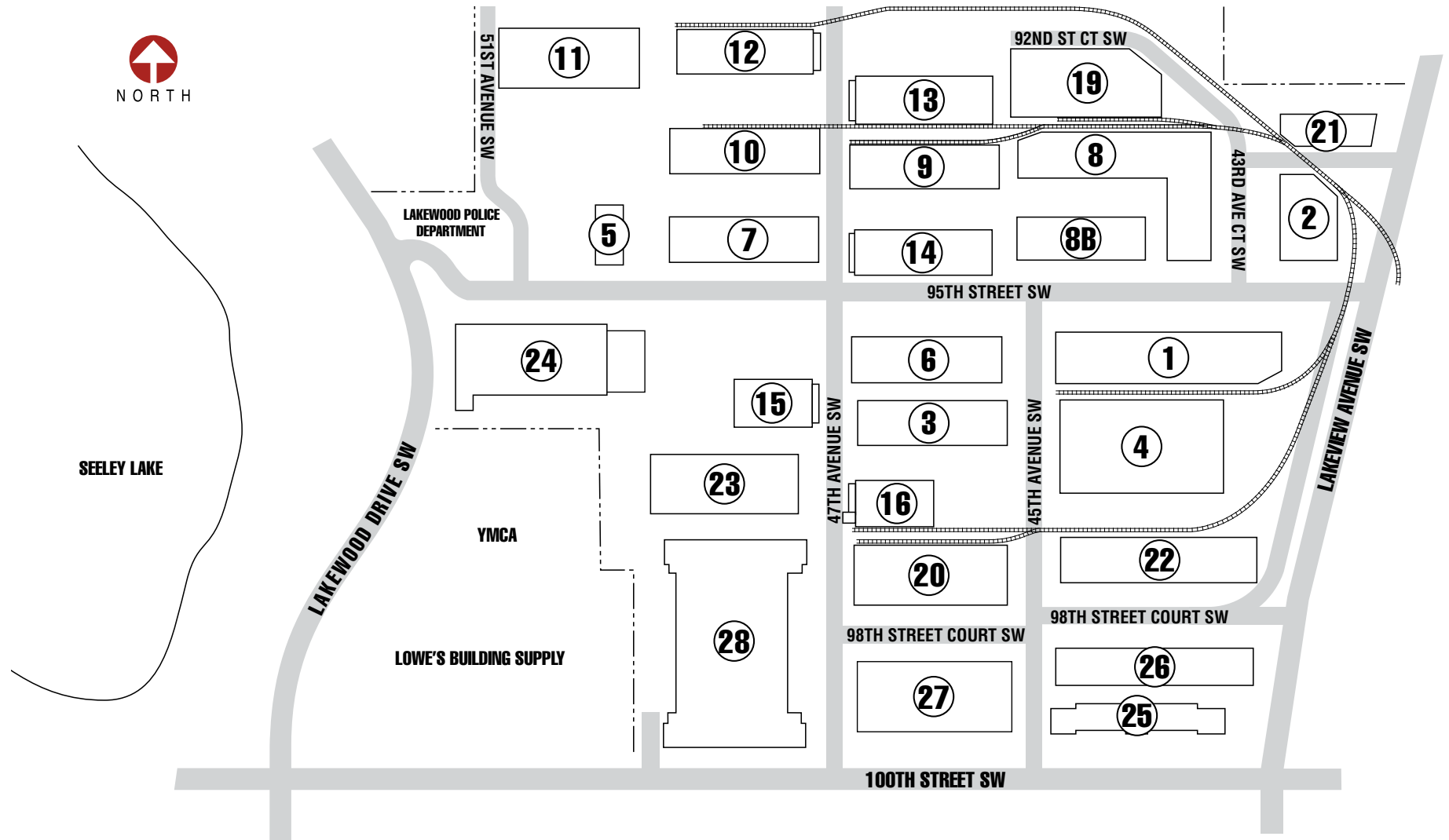
**FTZ #86 ZONING**

**FIBER INTERNET**

**PORT PROXIMITY**

**TRAILER PARKING**

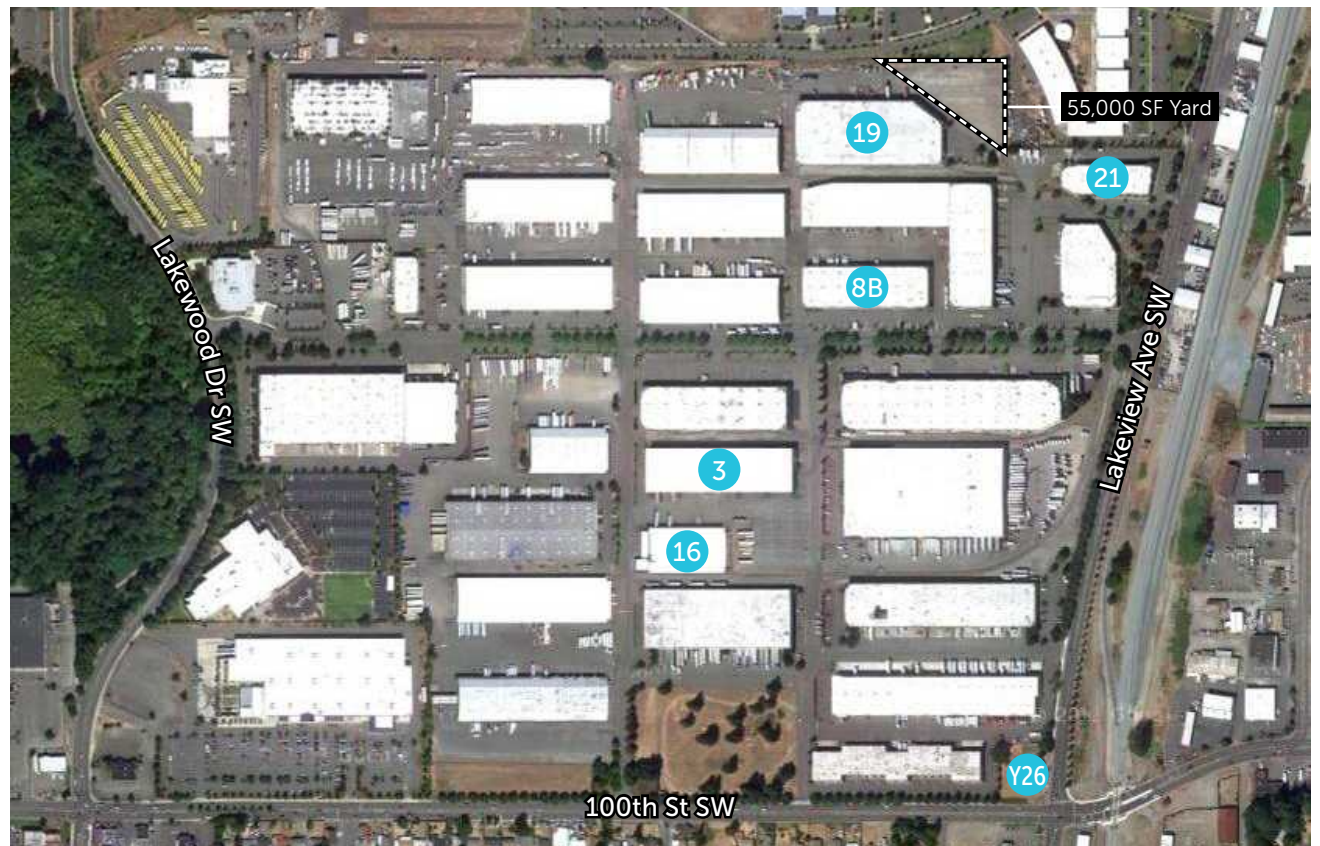
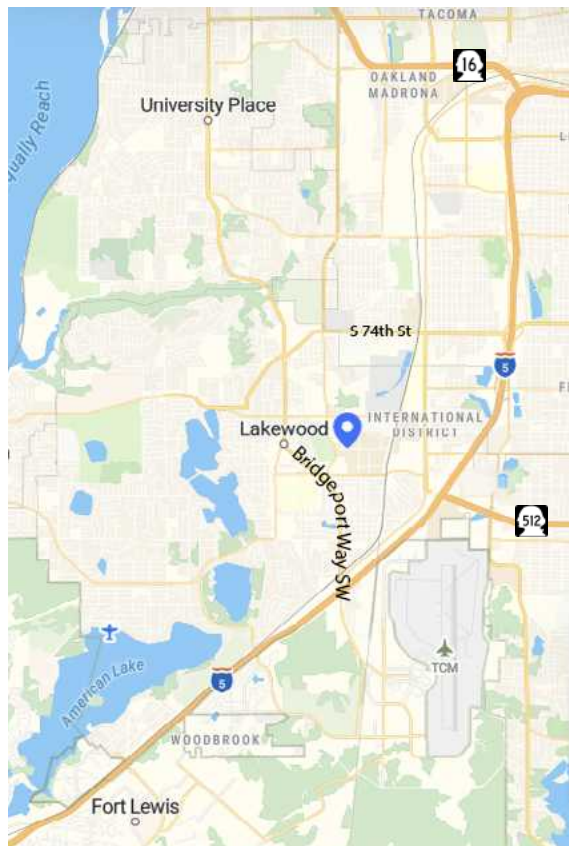
**HEAVY POWER**



# CURRENT AVAILABILITIES

Building	Suite	Shell Size	Office Size
19	Entire Building	106,720 SF	3,977 SF
3	A	30,000 SF	1,012 SF
16	C & D	14,305 SF	1,175 SF
8B	A-1 & B	14,200 SF	990 SF
21	A	8,675 SF	1,501 SF
Yard 26	N/A	28,500 SF (trailer yard)	N/A

Comments: Potential to lease Building 19 with the adjacent 55,000 SF yard



**CURRENT**  
AVAILABILITIES

BUILDING  
**19**

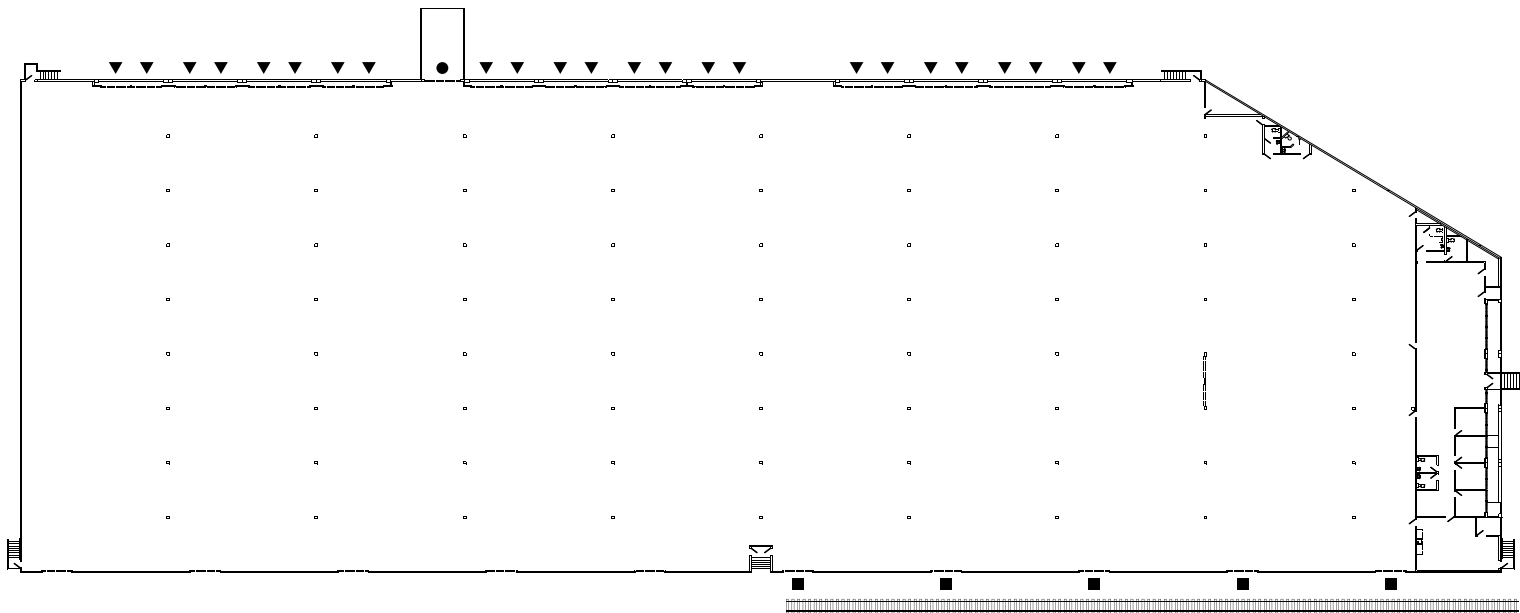
ENTIRE  
**BUILDING**

SHELL SIZE  
**106,720 SF**

OFFICE SIZE  
**3,977 SF**

NNN RATE  
**\$0.29/SF**

Comments: Potential to lease with adjacent 55,000 SF yard; 24 DH positions; 1 GL door; 5 rail doors; 2,000 Amps of 480/277V, 3-Phase Power; Fenced truck court; Available now



Click or Scan



to View on Map

**CURRENT**  
AVAILABILITIES

BUILDING  
**3**

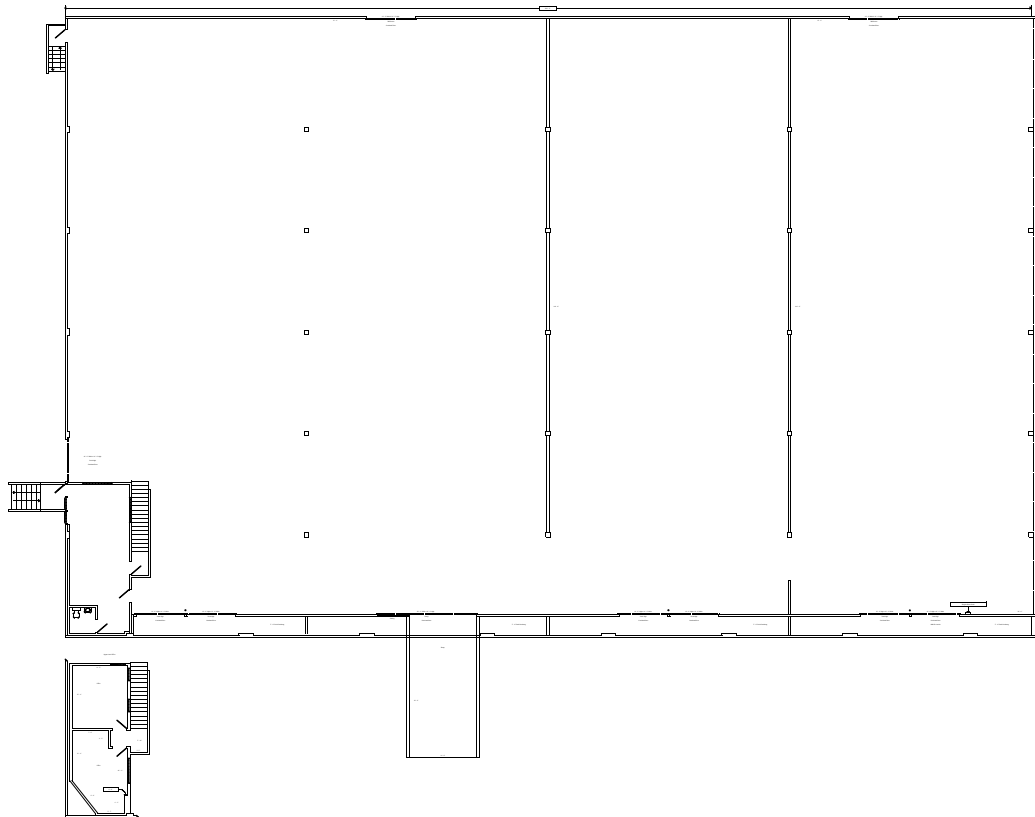
SUITE  
**A**

SHELL SIZE  
**30,000 SF**

OFFICE SIZE  
**1,012 SF**

NNN RATE  
**\$0.29/SF**

Comments: 6 DH doors (10' x 10'); 1 drive-in ramp with a 20' x 10' door; Available 7/1/2026



Click or Scan



to View on Map

**CURRENT**  
AVAILABILITIES

BUILDING  
**16**

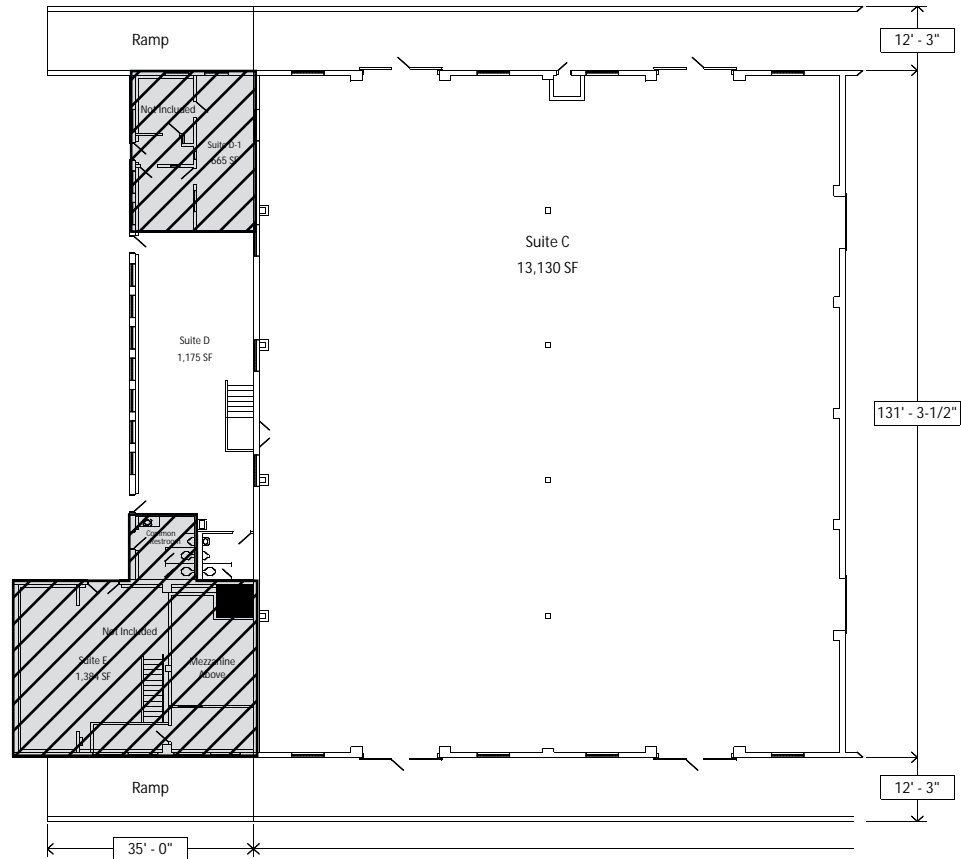
SUITE  
**C & D**

SHELL SIZE  
**14,305 SF**

OFFICE SIZE  
**1,175 SF**

NNN RATE  
**\$0.29/SF**

Comments: Available now



Click or Scan



to View on Map



**CURRENT**  
AVAILABILITIES

BUILDING  
**21**

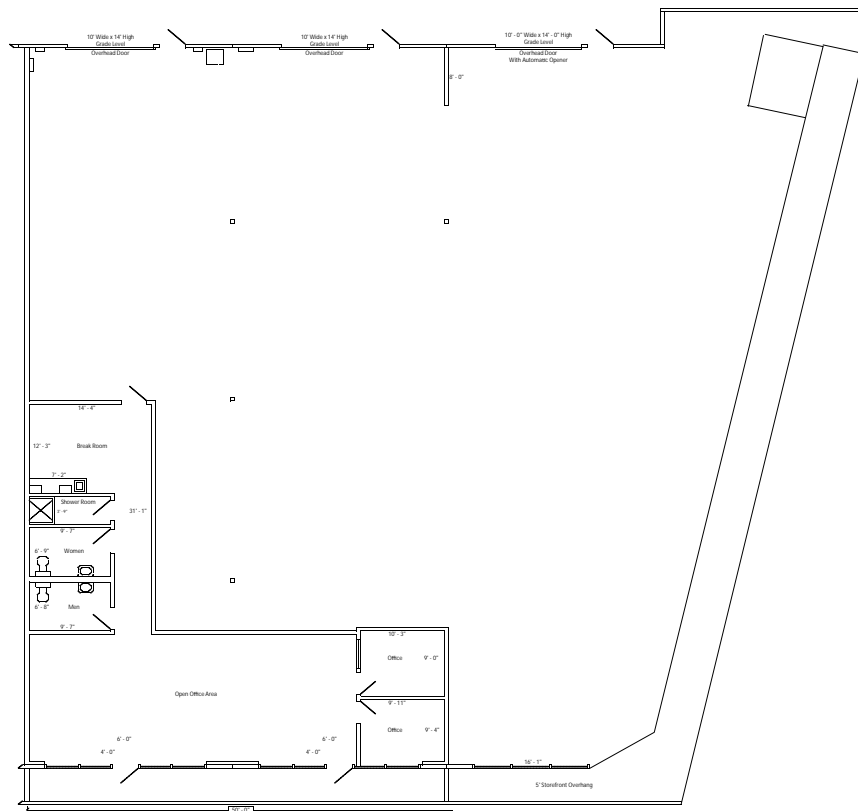
SUITE  
**A**

SHELL SIZE  
**8,675 SF**

OFFICE SIZE  
**1,501 SF**

NNN RATE  
**\$0.29/SF**

Comments: 3 GL doors (10x14) with automatic openers; 2 panels (400A & 100A) of 480/277V, 3-P power; Available now



Click or Scan



to View on Map

**CURRENT**  
AVAILABILITIES

YARD  
**26**

YARD SIZE  
**28,500 SF**

LEASE RATE  
**\$0.25/SF**

Comments: Fully fenced and striped for 24 trailer stalls



Click or Scan



to View on Map