

FOR SUBLEASE

CALL BROKER FOR MORE INFO

2701 N VAN MARTER ROAD, SUITE 2

Spokane, WA 99206

Property Key Facts

Available Now

Sublease Rate: \$7.20 PSF + NNN's

Suite SF: 20,696 SF

Dock High Doors: 5

Roll Up Doors: 2

Easy Ingress & Egress

Exclusively listed by:

Ryan Oberg
Commercial Broker
509.990.8423
ryan.oberg@g-b.com



Property Description

2701 N Van Marter Road is a premier, freestanding commercial warehouse industrial property located in the heavy industrial and commercial corridor of Spokane Valley, WA 99206. Situated just north of Interstate 90 between Pines Rd and Argonne Rd, this strategically positioned facility offers convenient accessibility to major local transit routes.

Demographics

POPULATION	1 MILE	3 MILES	5 MILES
	9,579	61,765	124,046
HOUSEHOLDS	1 MILE	3 MILES	5 MILES
	4,127	25,933	49,727
AVG HOUSEHOLD INCOME	1 MILE	3 MILES	5 MILES
	\$70,346	\$81,583	\$90,194

Features



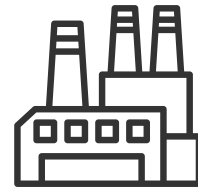
Five
Dock High Doors



Two
Roll Up Doors



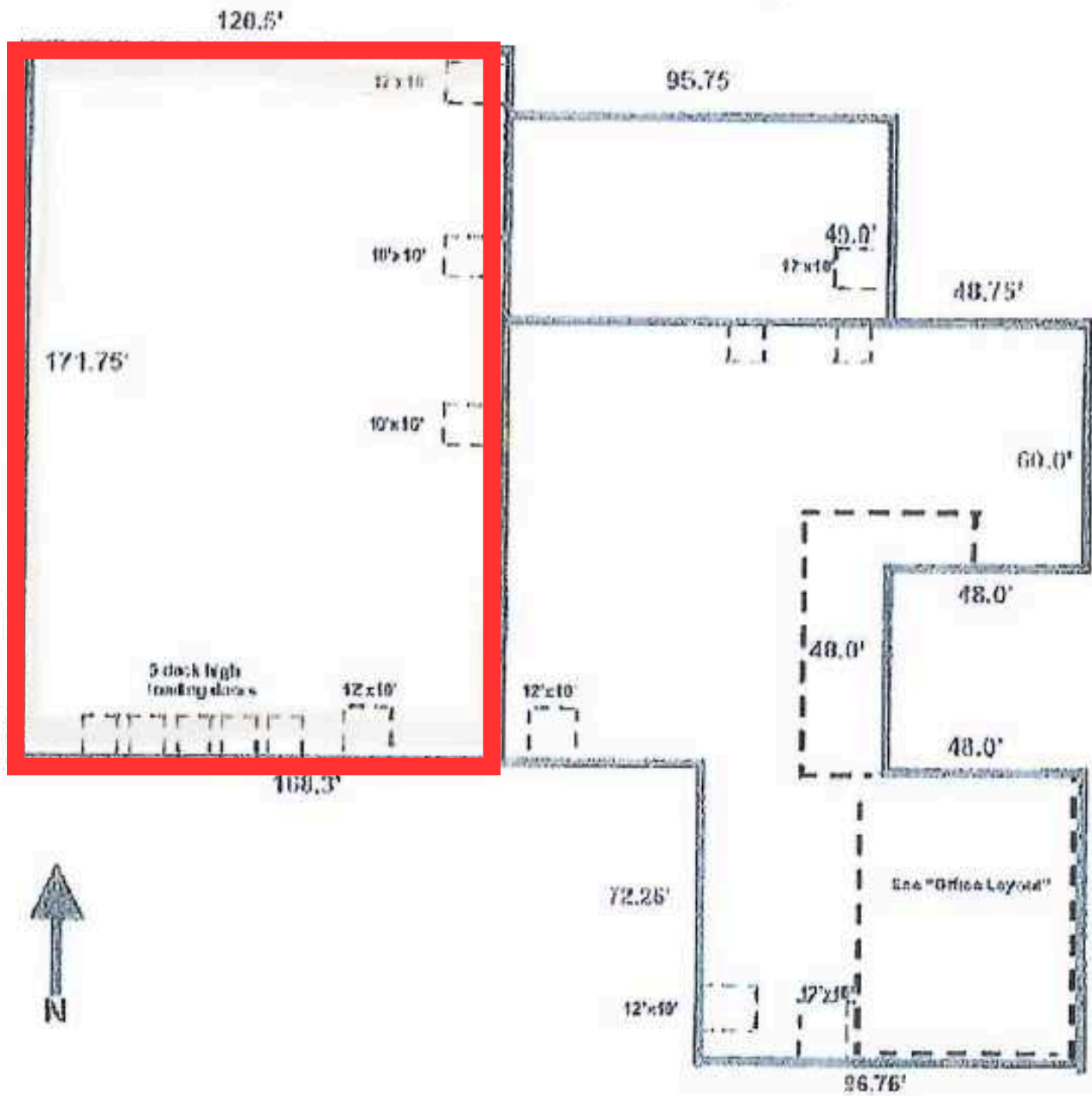
Prime
Location



Nearby Spokane Business
& Industrial Park

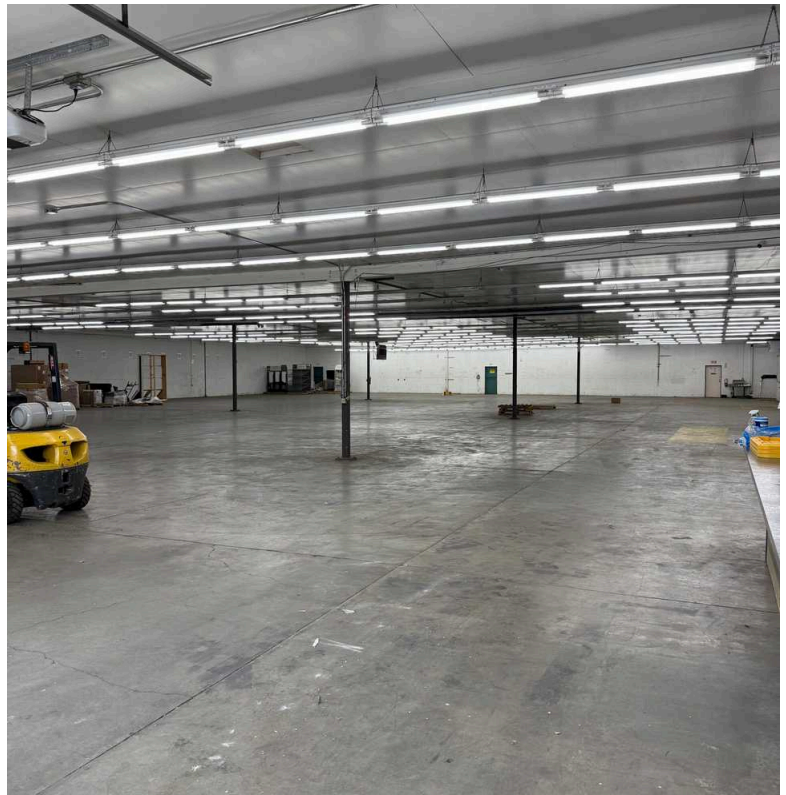
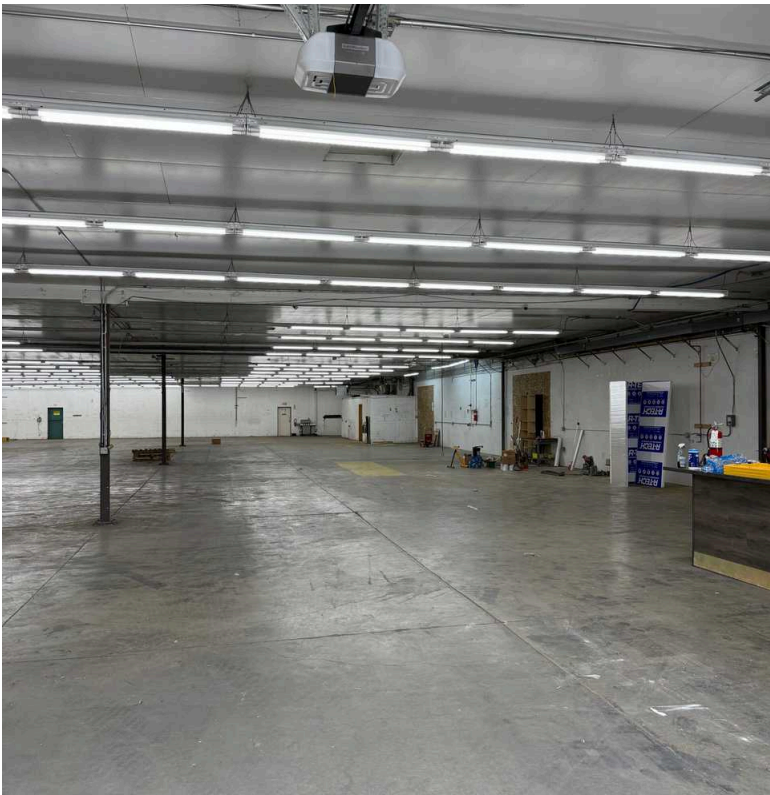
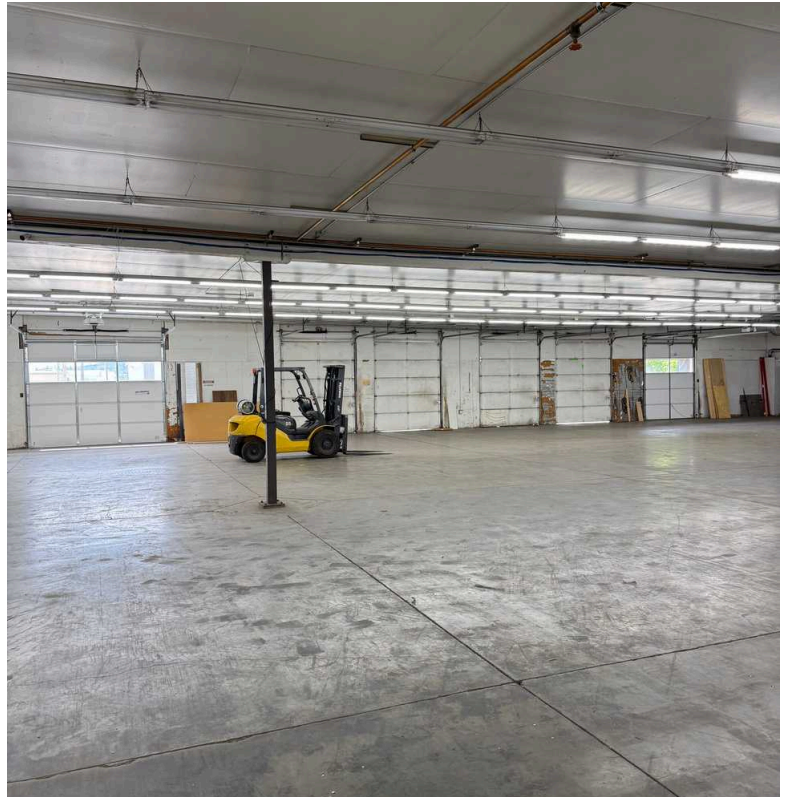
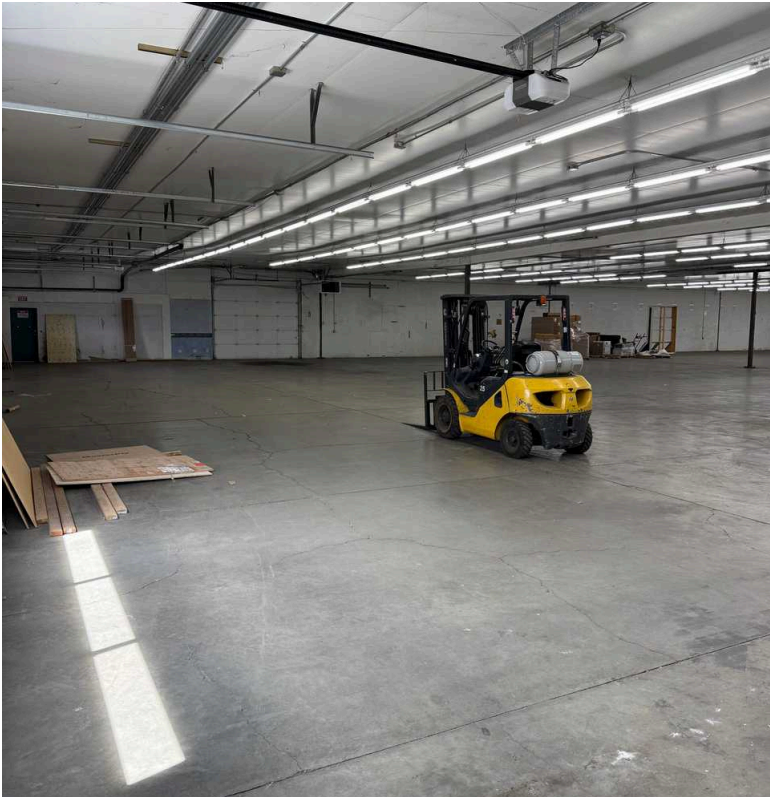
Ryan Oberg
Commercial Broker
509.990.8423
ryan.oberg@g-b.com





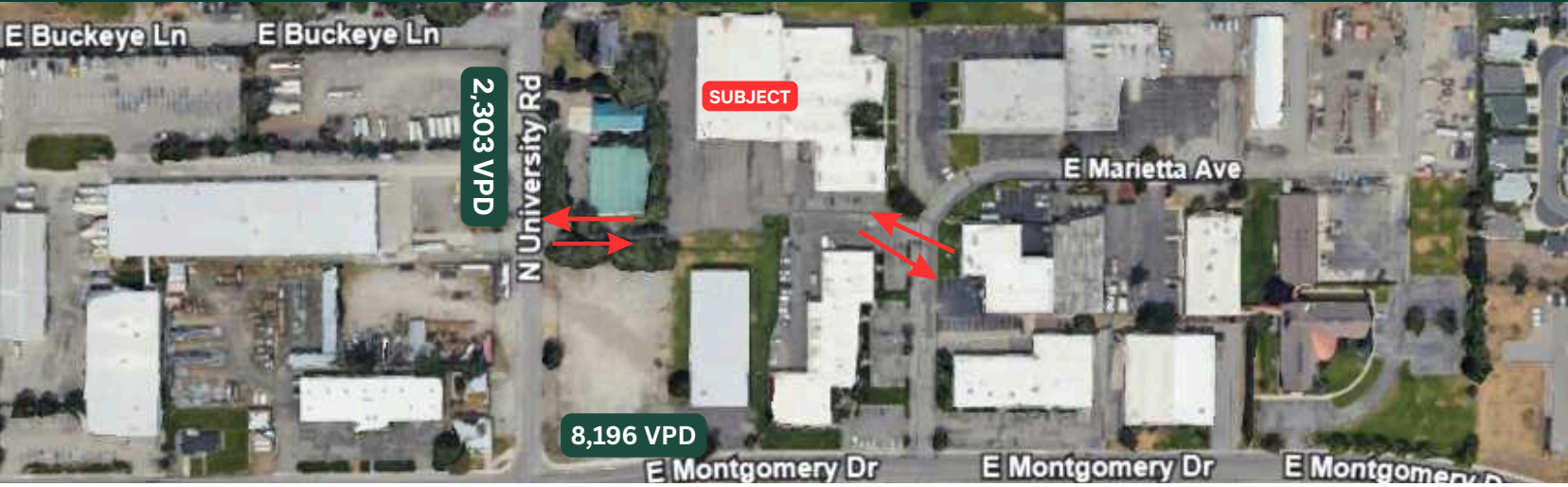
Ryan Oberg
Commercial Broker
509.990.8423
ryan.oberg@g-b.com





Ryan Oberg
Commercial Broker
509.990.8423
ryan.oberg@g-b.com





General Warranty Disclaimer: G&B makes no warranties, representations, or guarantees as to Seller/Owner's supplied information or the Property itself. G&B disclaims all warranties (express and implied) as to the Property and Seller/Owner's statements/information about the Property.

Buyer/Lessee shall not rely on Property information supplied by Seller/Owner or G&B. Buyer/Lessee shall conduct its own due diligence to verify any information and the Property's suitability for specific or general purposes.

Copyright information G&B respects the intellectual property of others and its Digital Millennium Copyright Act.

Ryan Oberg
 Commercial Broker
 509.990.8423
 ryan.oberg@g-b.com

