

# 25,880 SF

Industrial Space For Lease



## Prologis Park Seattle 6



646 South Holgate Street  
Seattle, WA 98057 USA

### LOCATION

- IG1-U85 zoning

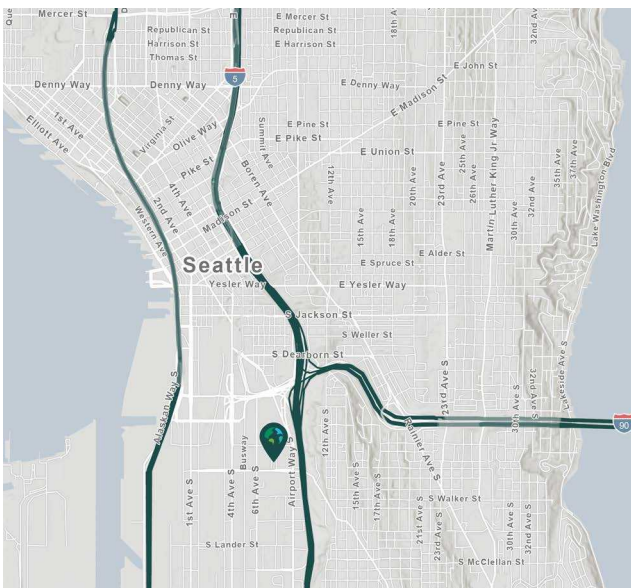
### FACILITY

- Total Available Size: 25,880 SF
- Clear Height: 18'
- Loading: 20 Dock High Doors
- Rare In-City Cross-Dock
- 83,900 SF of Land

### ADVANTAGES AND AMENITIES

- 56 Truck Spots
- Yard Area
- Potential Rail Access

**Your single-source service for efficient move-in and operations: [prologisessentials.com](https://www.prologisessentials.com)**

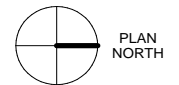
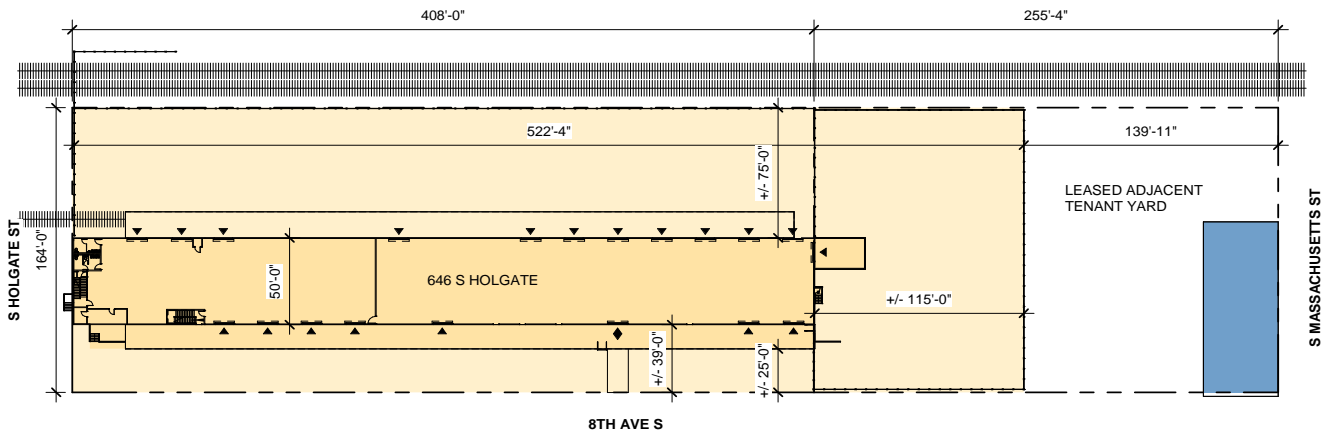
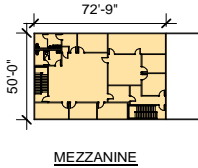


# 25,880 SF

Industrial Space For Lease



## Prologis Park Seattle 6



### NEWMARK

**Newmark**  
Evan Lugar  
evan.lugar@nrmk.com  
ph +1 425 362 1403  
10900 NE 4th St  
Suite 1430  
Bellevue, WA 98004 USA

**Newmark**  
Josh Satterlee  
josh.satterlee@nrmk.com  
ph +1 425 362 1396  
10900 NE 4th St  
Suite 1430  
Bellevue, WA 98004 USA

**Prologis**  
Michelle Weeks  
mweeks@prologis.com  
ph +1 206 414 7631  
33930 Weyerhaeuser Way S  
Suite 100  
Federal, WA 98001 USA

No warranty or representation, expressed or implied, is made as to the accuracy of the information contained herein, and same is submitted subject to error and omissions.

The information contained herein has been obtained from sources deemed reliable but has not been verified and no guarantee, warranty or representation, either express or implied, is made with respect to such information. Terms of sale or lease and availability are subject to change or withdrawal without notice.