

# QW

## QUADRANT WILLOWS BUILDING C

EXCEPTIONAL WORKSPACE IN THE HEART OF REDMOND'S INNOVATION CORRIDOR

11241 WILLOWS RD NE  
REDMOND, WASHINGTON

# PROPERTY HIGHLIGHTS



Highly sought-after Redmond location surrounded by leading corporate employers including Meta, Amazon, Microsoft, SpaceX, and Google.



Immediate access to SR-520 and I-405 with nearby mass-transit connectivity.



Efficient floor plates offering abundant natural light, flexible layouts, and unobstructed views.



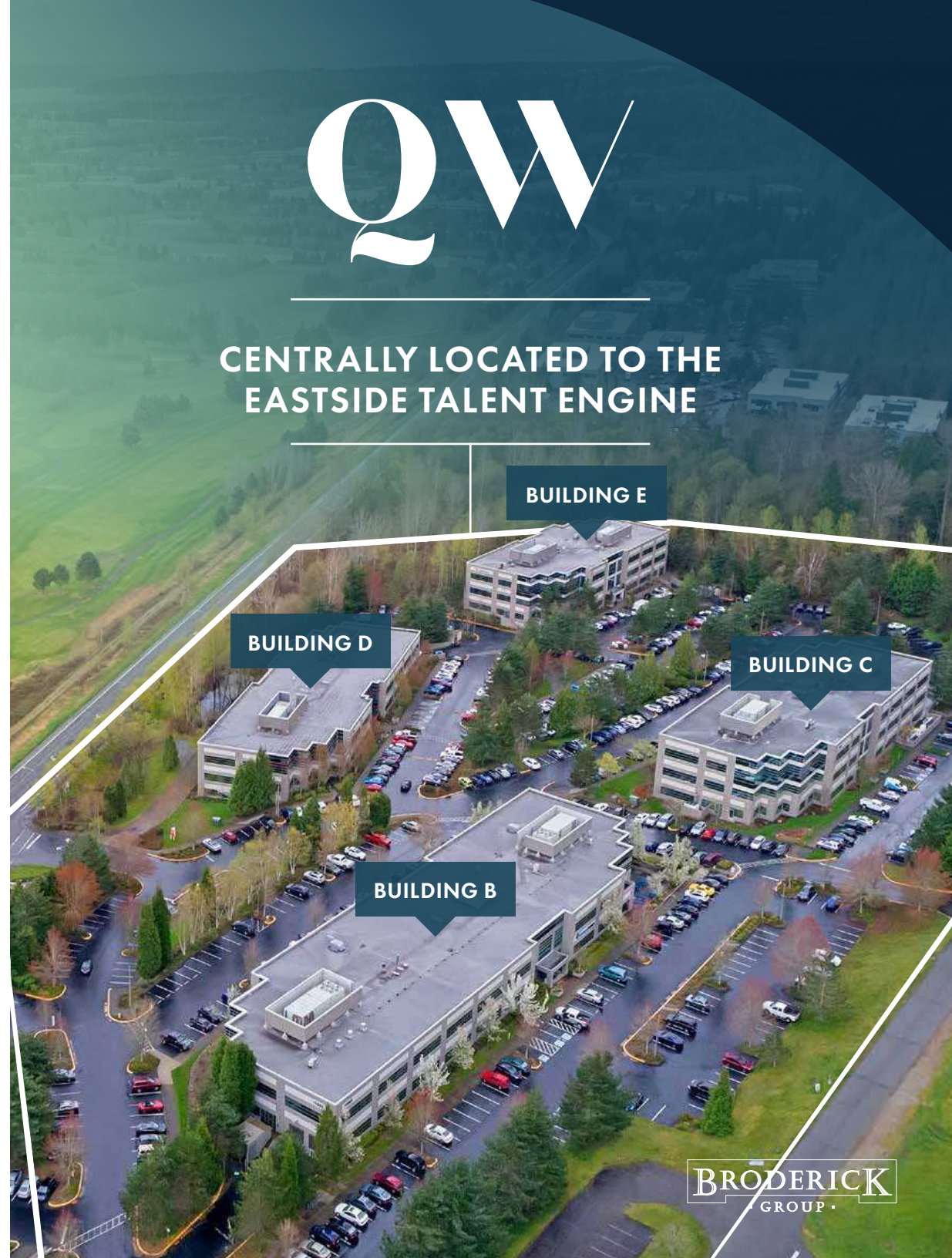
Conveniently located between downtown Redmond and Totem Lake retail amenities, including the highly desirable Redmond Town Center and The Village at Totem Lake.



Direct access to the local biking infrastructure, including the Redmond Central Connector, Cross Kirkland corridor and Sammamish River Trail.

# QW

## CENTRALLY LOCATED TO THE EASTSIDE TALENT ENGINE





**QW**  
QUADRANT WILLOWS

EST. 2015  
**THE VILLAGE**  
AT TOTEM LAKE

-  BIKE ROUTE
-  LINK LIGHT RAIL
-  RAPID TRANSIT

# DRIVE TIMES

## DOWNTOWN BELLEVUE

12 MINUTES | 9 MILES

## DOWNTOWN REDMOND

9 MINUTES | 4 MILES

## KIRKLAND

10 MINUTES | 5 MILES

## DOWNTOWN SEATTLE

22 MINUTES | 18 MILES

# NEARBY TENANTS



BUNGIE

SPACEX



Google



Meta



QW

QUADRANT WILLOWS



AEROJET  
ROCKETDYNE

amazon.com

stryker

ASTRONICS

## LEADING TECH, HARDWARE, & AEROSPACE USERS

Quadrant Willows is located within Redmond's established technology corridor, surrounded by a concentration of leading tech and innovation-driven users. Proximity to major employers such as Meta and other prominent Eastside technology firms reinforces the area's role as a core hub for engineering, R&D, and advanced office users. This tech-centric environment supports long-term tenant demand while offering a highly connected, business-focused setting.

# NEARBY AMENITIES



## REDMOND TOWN CENTER

Quadrant Willows is located just minutes from Redmond Town Center, an established upscale amenity hub offering a refined mix of retail, dining, and services. This nearby destination provides convenient access to high-quality restaurants, boutique fitness, and curated retail within a vibrant, pedestrian-friendly environment—enhancing the daily employee experience while reinforcing the property’s premier Redmond location.



Located near The Village at Totem Lake, the property benefits from immediate access to one of Kirkland’s premier upscale amenity destinations. The Village at Totem Lake offers a thoughtfully curated mix of high-quality retail, dining, and everyday services within a modern, walkable environment—providing a convenient and elevated amenity base that enhances the overall employee experience.

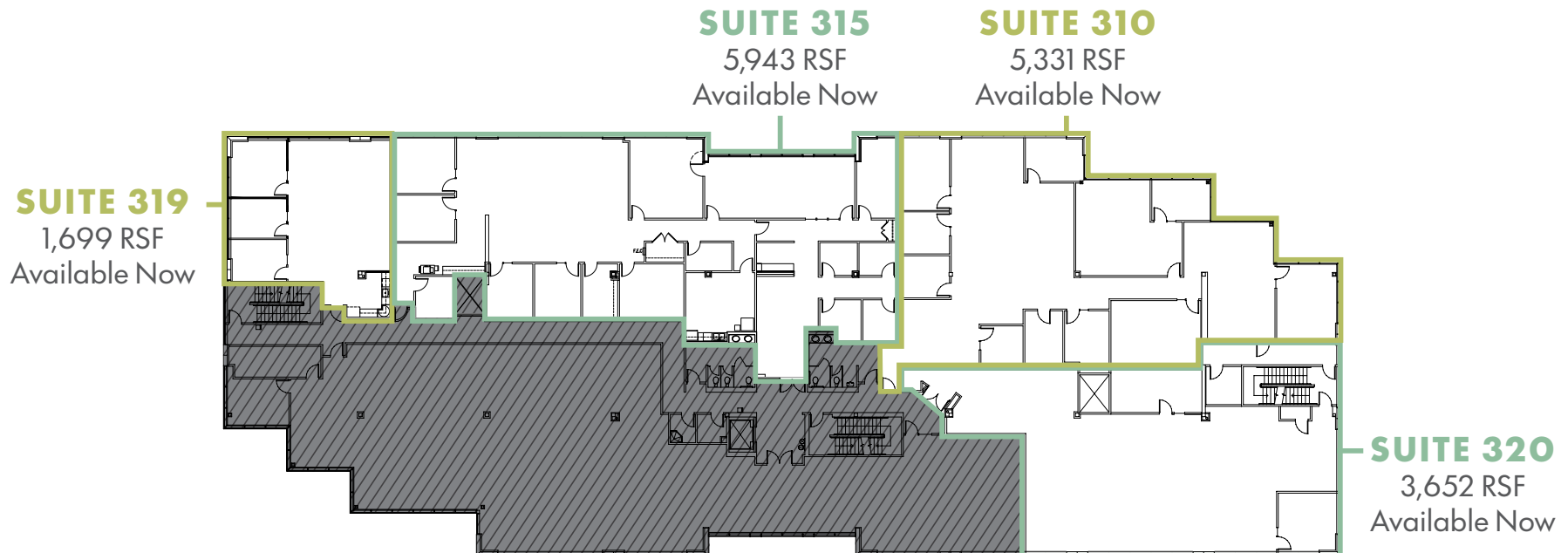


BARNES & NOBLE



## FACT SHEET

<b>CAMPUS SIZE</b>	246,899 SF over 4 buildings / Building C - 71,196 SF
<b>LAND AREA</b>	16.55 acres
<b>2026 ESTIMATED OPEX</b>	\$12.50/SF/Yr
<b>PARKING</b>	Building C: 222 parking stalls equates to 3.1 stalls / 1,000 SF
<b>SPRINKLERS</b>	Yes
<b>CEILING HEIGHTS</b>	9' finished ceiling height, 14.5' deck height
<b>FEATURES</b>	Market ready improvements underway. Extensive window-line with views of Willows Run Golf Complex and the Sammamish Valley





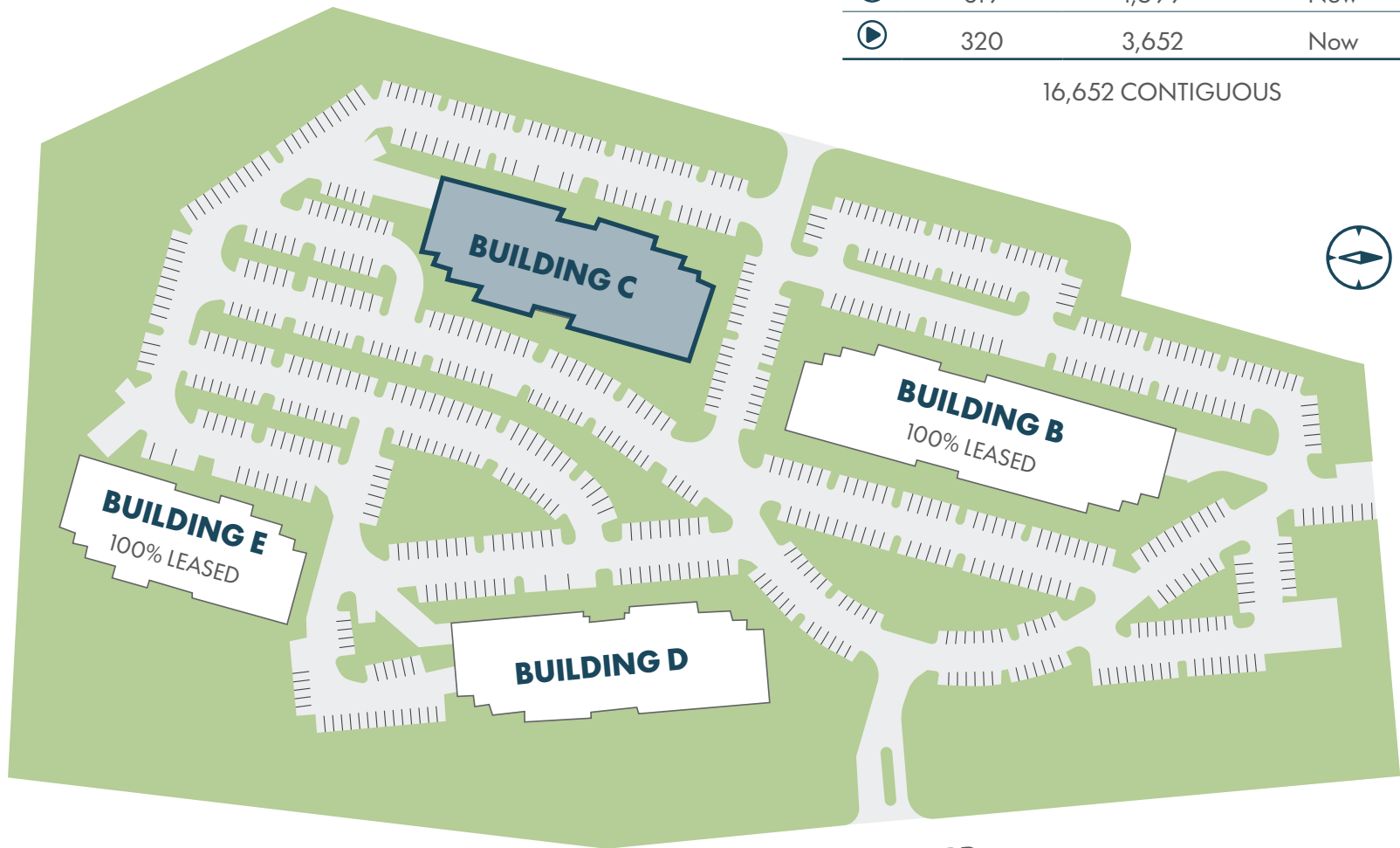
QUADRANT WILLOWS

# AVAILABILITY

## BUILDING C

	SUITE	RSF	AVAILABLE
▶	310	5,331	Now
▶	315	5,943	Now
▶	319	1,699	Now
▶	320	3,652	Now

16,652 CONTIGUOUS



WILLOWS RD



# Building C | Floor 3

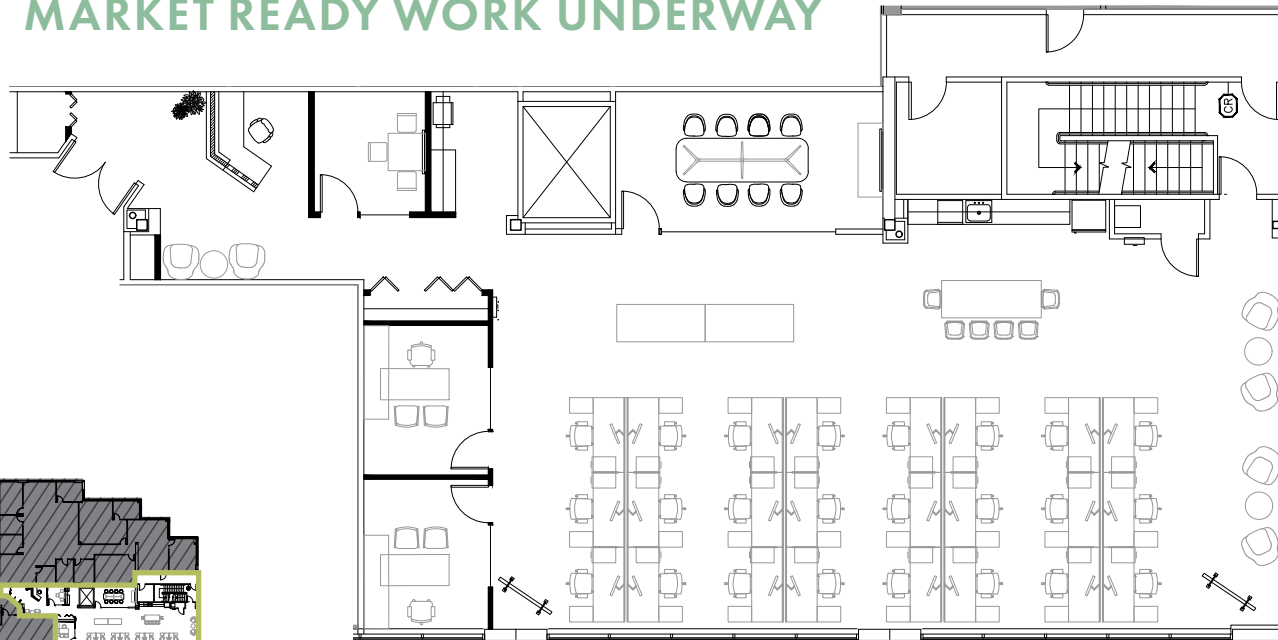
**SUITE 320**

3,652 RSF

AVAILABLE NOW

 [CLICK TO VIEW VIRTUAL TOUR](#)

**SPECULATIVE PLAN  
MARKET READY WORK UNDERWAY**



**ERIC MEUSSNER**  
(425) 274-4282  
meussner@broderickgroup.com

**JEFF LIVINGSTON**  
(425) 274-4288  
livingston@broderickgroup.com

**MICK LARSEN**  
(425) 274-4921  
larsen@broderickgroup.com



# Building C | Floor 3

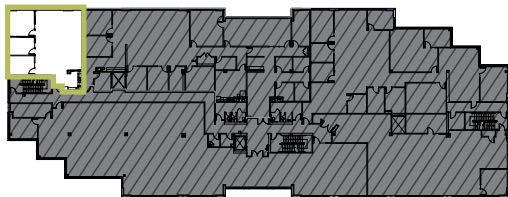
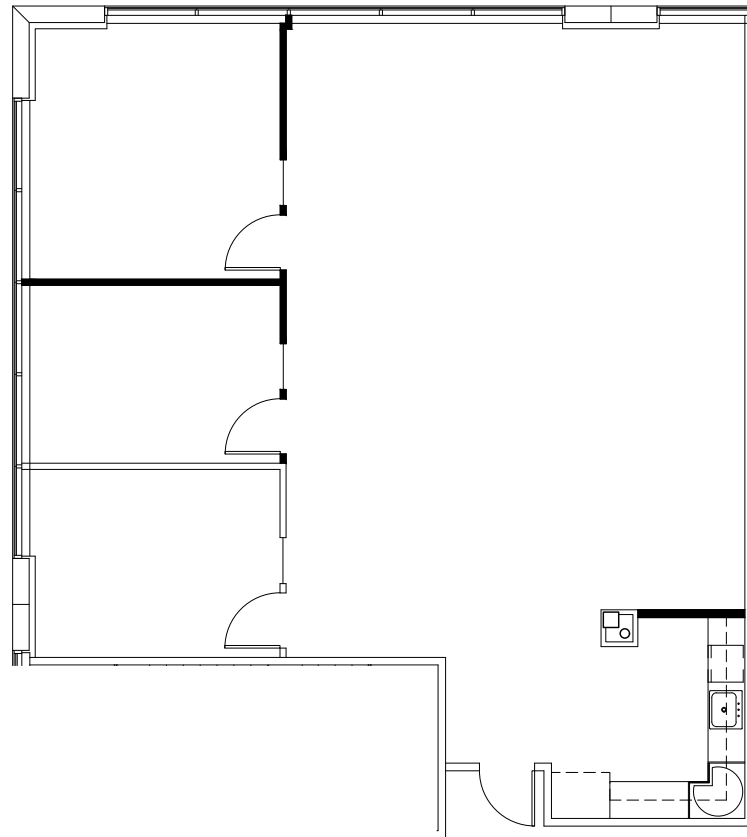
MARKET READY PLAN

**SUITE 319**

1,699 RSF

AVAILABLE NOW

 [CLICK TO VIEW VIRTUAL TOUR](#)



**ERIC MEUSSNER**  
(425) 274-4282  
meussner@broderickgroup.com

**JEFF LIVINGSTON**  
(425) 274-4288  
livingston@broderickgroup.com

**MICK LARSEN**  
(425) 274-4921  
larsen@broderickgroup.com

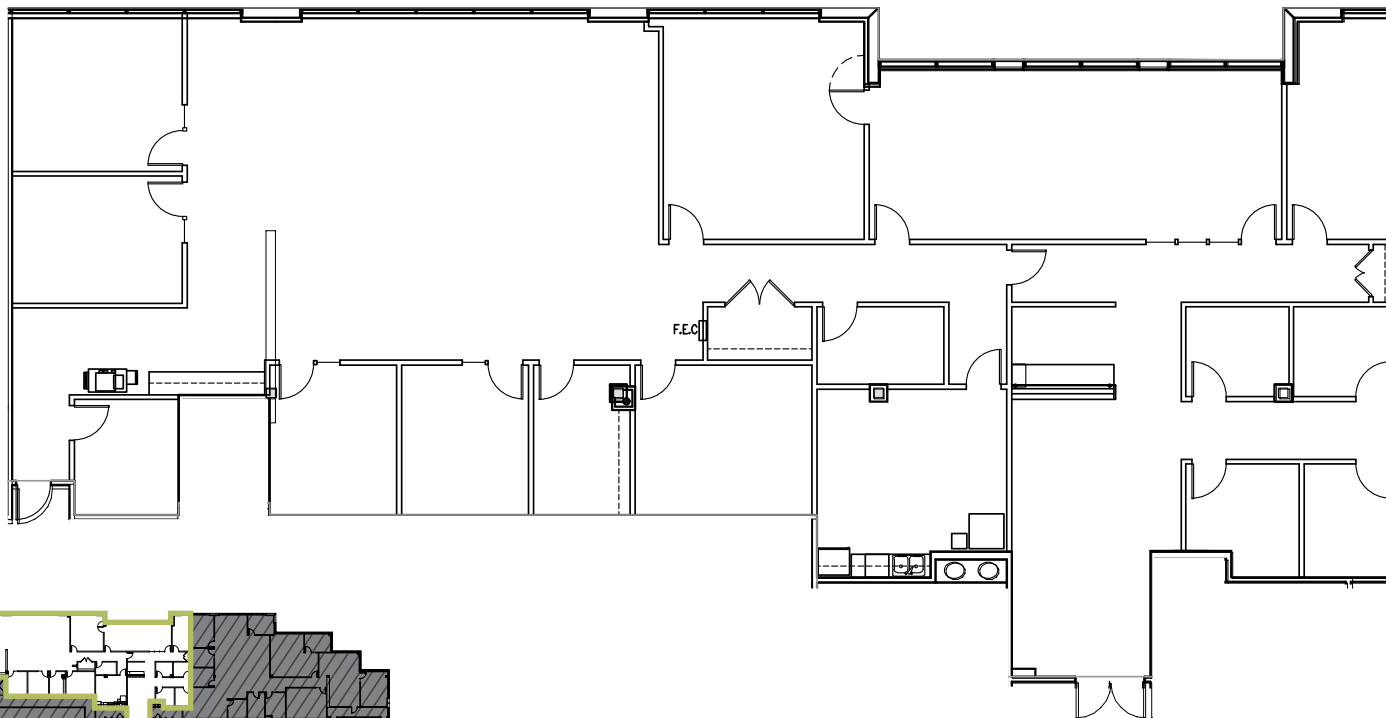




 **CLICK TO VIEW  
VIRTUAL TOUR**

## Building C | Floor 3

**SUITE 315**  
5,943 RSF  
AVAILABLE NOW



**ERIC MEUSSNER**

(425) 274-4282

meussner@broderickgroup.com

**JEFF LIVINGSTON**

(425) 274-4288

livingston@broderickgroup.com

**MICK LARSEN**

(425) 274-4921

larsen@broderickgroup.com



QUADRANT  
WILLOWS

11241 WILLOWS RD NE | REDMOND, WA



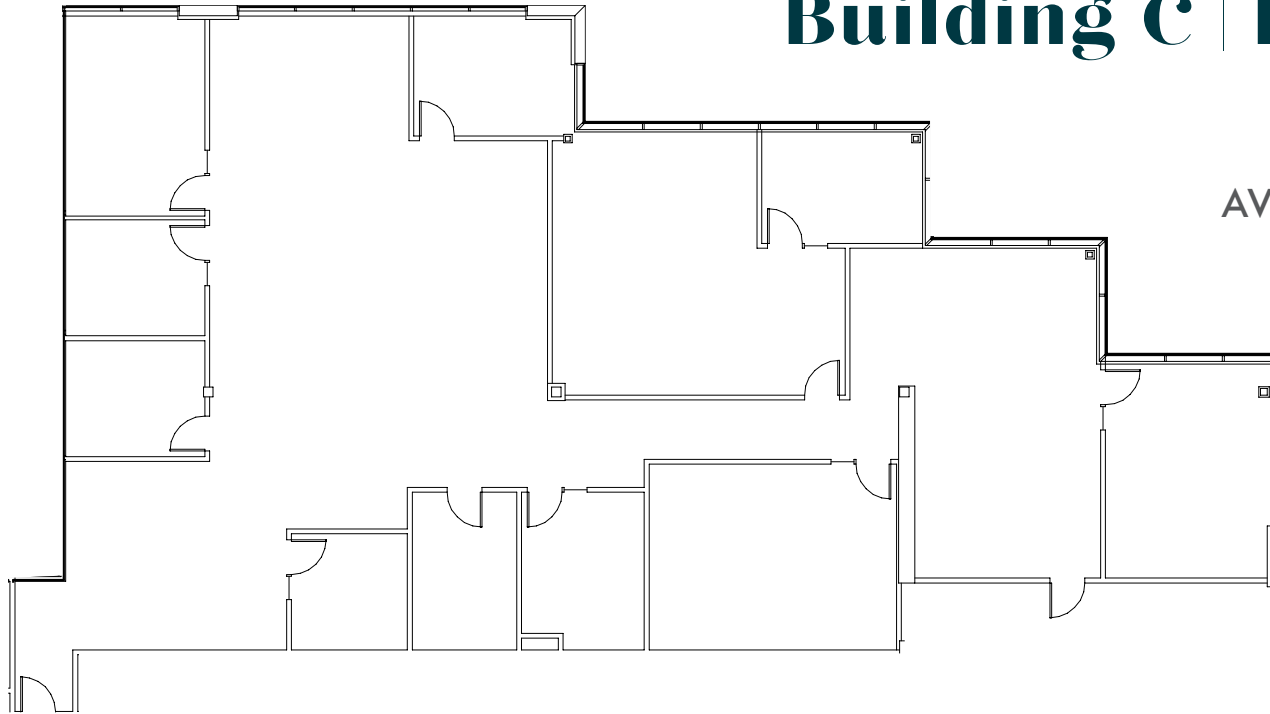
## Building C | Floor 3

**SUITE 310**

5,331 RSF

AVAILABLE NOW

 [CLICK TO VIEW  
VIRTUAL TOUR](#)



**ERIC MEUSSNER**

(425) 274-4282

meussner@broderickgroup.com

**JEFF LIVINGSTON**

(425) 274-4288

livingston@broderickgroup.com

**MICK LARSEN**

(425) 274-4921

larsen@broderickgroup.com

**BRODERICK**  
GROUP

# QW

## QUADRANT WILLOWS

**ERIC MEUSSNER**

(425) 274-4282

[meussner@broderickgroup.com](mailto:meussner@broderickgroup.com)

**JEFF LIVINGSTON**

(425) 274-4288

[livingston@broderickgroup.com](mailto:livingston@broderickgroup.com)

**MICK LARSEN**

(425) 274-4921

[larsen@broderickgroup.com](mailto:larsen@broderickgroup.com)

**BRODERICK**  
• GROUP •

The information contained herein has been given to us by the owner or sources that we deem reliable. We have no reason to doubt its accuracy, but we do not guarantee it. Prospective tenants should carefully verify all information contained herein.