

# NCR EXECUTIVE CENTRE

15400 SE 30TH PLACE | BELLEVUE, WA



# NCR EXECUTIVE CENTRE

15400 SE 30TH PLACE | BELLEVUE, WA

## AVAILABLE SPACE

<u>SUITE</u> <u>101</u>	<b>1,531</b> RSF	<b>Available</b> <b>2/1/27</b>
<u>SUITE</u> <u>204</u>	<b>4,224</b> RSF	<b>Available</b> <b>11/1/26</b>

For further information please contact exclusive leasing agents:

**TONY ULACIA**

(425) 646-5244

ulacia@broderickgroup.com

**CLAYTON HOLM**

(425) 274-4287

holm@broderickgroup.com



*The information contained herein has been given to us by the owner or sources which we deem reliable. We have no reason to doubt its accuracy, but we do not guarantee it. Prospective tenants should carefully verify all information contained herein.*



## PROPERTY FEATURES

- Approximately 4.0/1,000 RSF Parking – Free
- 2026 Estimated OpEx: \$11.96 /SF
- Prime I-90 location conveniently located next to corporate headquarters of T-Mobile, Costco and REI next to 156th SE interchange for immediate access to I-90
- Concrete and steel, Class A office building located in wooded, park-like setting with walking trails
- Walking distance to numerous restaurants and retail amenities
- High speed internet connectivity provided by Isofusion (On site data center) and Comcast
- Showers in the building
- Deli servicing office park
- Monument signage possibilities
- Local ownership

Join some of the  
**MOST PRESTIGIOUS**  
**COMPANIES** on the  
Eastside

## DRIVE TIMES

**10 MINUTES**  
TO BELLEVUE

**15 MINUTES**  
TO SEATTLE

# NCR EXECUTIVE CENTRE

15400 SE 30TH PLACE | BELLEVUE, WA

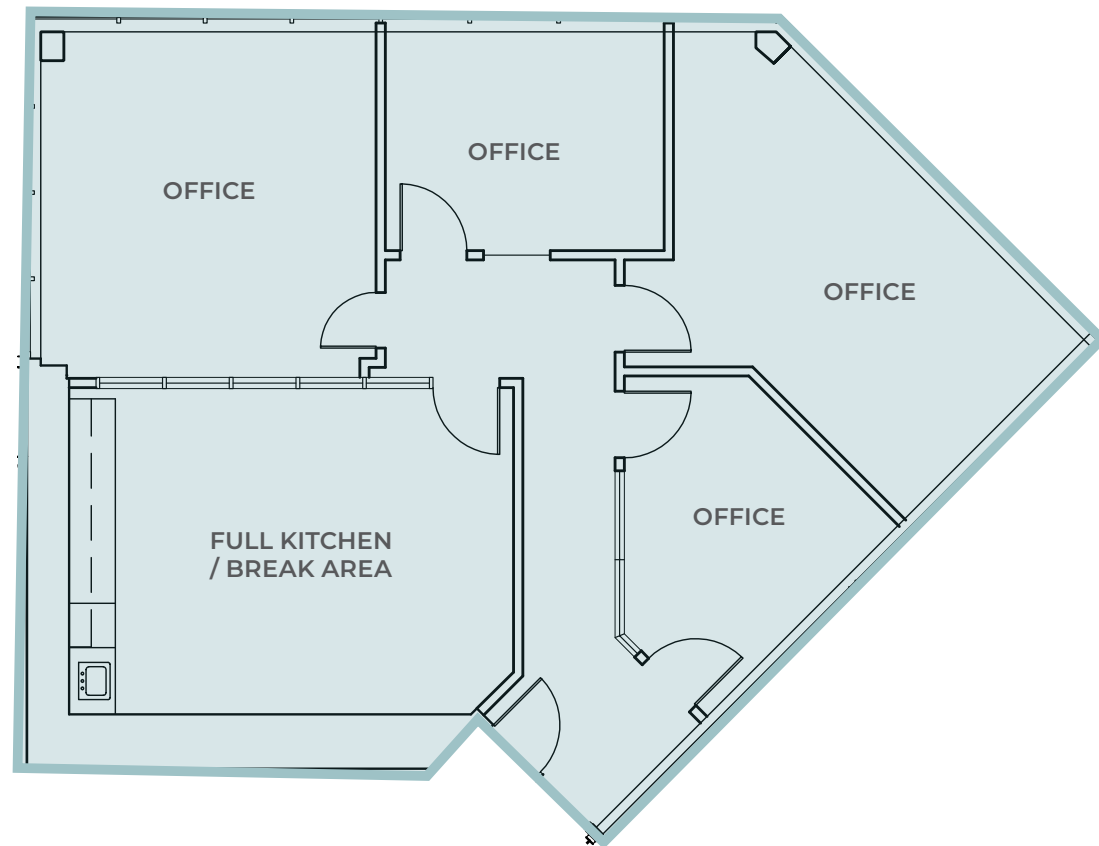
## SUITE 101

- » Available 2/1/2027
- » 1,531 RSF
- » Four private offices
- » Kitchen / break room
- » \$26/ RSF, NNN

For further information please  
contact exclusive leasing agents:

**TONY ULACIA**  
(425) 646-5244  
ulacia@broderickgroup.com

**CLAYTON HOLM**  
(425) 274-4287  
holm@broderickgroup.com



# NCR EXECUTIVE CENTRE

15400 SE 30TH PLACE | BELLEVUE, WA

## SUITE 204

- » Available 11/1/2026
- » 4,224 RSF
- » Four private offices
- » Open area for multiple cubicles
- » Six collaboration booths for team meetings and two private call booths
- » Recently renovated with upgraded finishes
- » \$26.00 / RSF, NNN

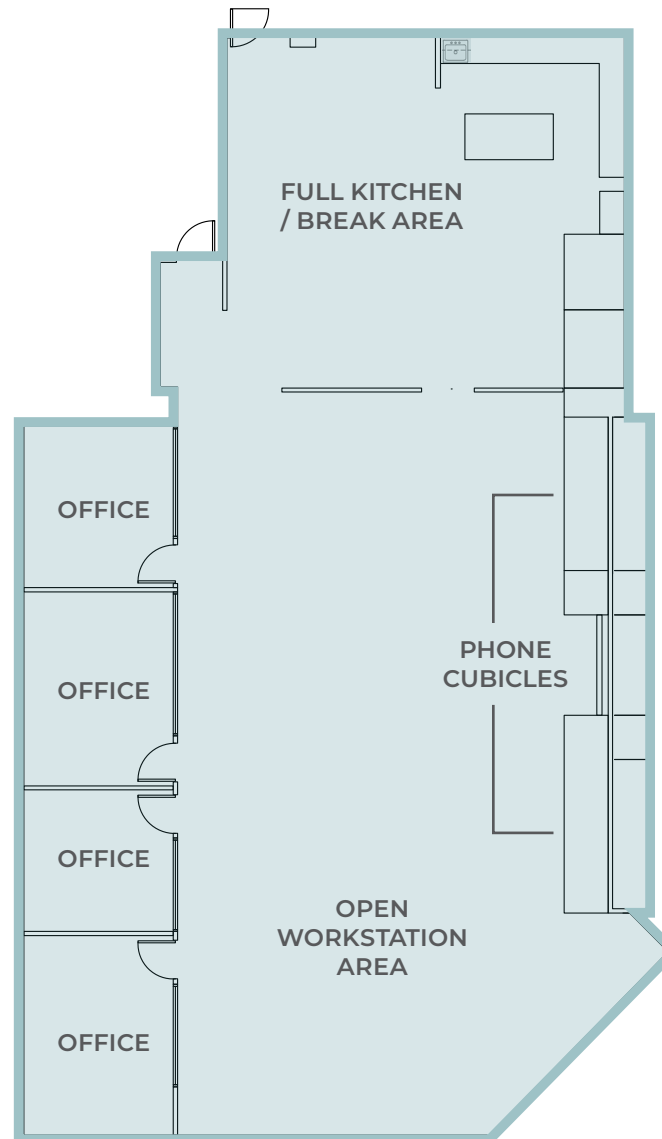


[VIEW VIRTUAL TOUR](#)

For further information please contact exclusive leasing agents:

**TONY ULACIA**  
(425) 646-5244  
ulacia@broderickgroup.com

**CLAYTON HOLM**  
(425) 274-4287  
holm@broderickgroup.com



[BACK TO AVAILABILITIES](#)