



FOR LEASE

Mission Village

212 Fifth Street
Wenatchee, WA 98801

1,840 SF
AVAILABLE

\$24.00
SF/YR

Chad Hamilton
Manager
509.884.6381 (Direct)
Chad@ncw-commercial.com

Center Investments, Inc.
18 N. Mission Suite D
Wenatchee, WA 98801
509.884.6381
www.ncw-commercial.com



CENTER INVESTMENTS, INC.
Commercial Real Estate
Brokerage and Property Management

Property Overview

1,840 SF
AVAILABLE SF

\$24
ASKING RATE SF/YR

0.000
LOT SIZE

0
BUILDING SQFT

70278
PARCEL ID

Chelan
COUNTY

0
FRONTAGE

47.430576,-120.319006
COORDINATES

— EXECUTIVE SUMMARY

Mission Village is a 32,000 square foot retail property located at 212 Fifth Street in Wenatchee, Washington.

Situated in one of Wenatchee's premier retail corridors, Mission Village offers high-visibility space ideal for retailers and service providers.

This well-maintained retail center presents an outstanding leasing opportunity for businesses seeking a proven Wenatchee location.

Mission Village is positioned as a daily-needs retail hub, attracting consistent consumer traffic from the surrounding Wenatchee community.

— PROPERTY HIGHLIGHTS

1840 square feet of well-configured restaurant space with high ceilings and frontage along Mission Street.

Prominent signage opportunities with high visibility from major roadways

ACCESSIBILITY

TRANSIT

Wenatchee, Washington Amtrak Station	0.8 mi
Chelan & 9th	0.3 mi
Chelan and 9th	0.3 mi

AIRPORTS

Pangborn Memorial Airport (EAT)	5.4 mi
Waterville	19.6 mi
Central Washington Hospital Heliport	1.6 mi

Space Available

Suite #1

\$24 SF/Yr

SF AVAILABLE

1,840 SF

TERM

Negotiable

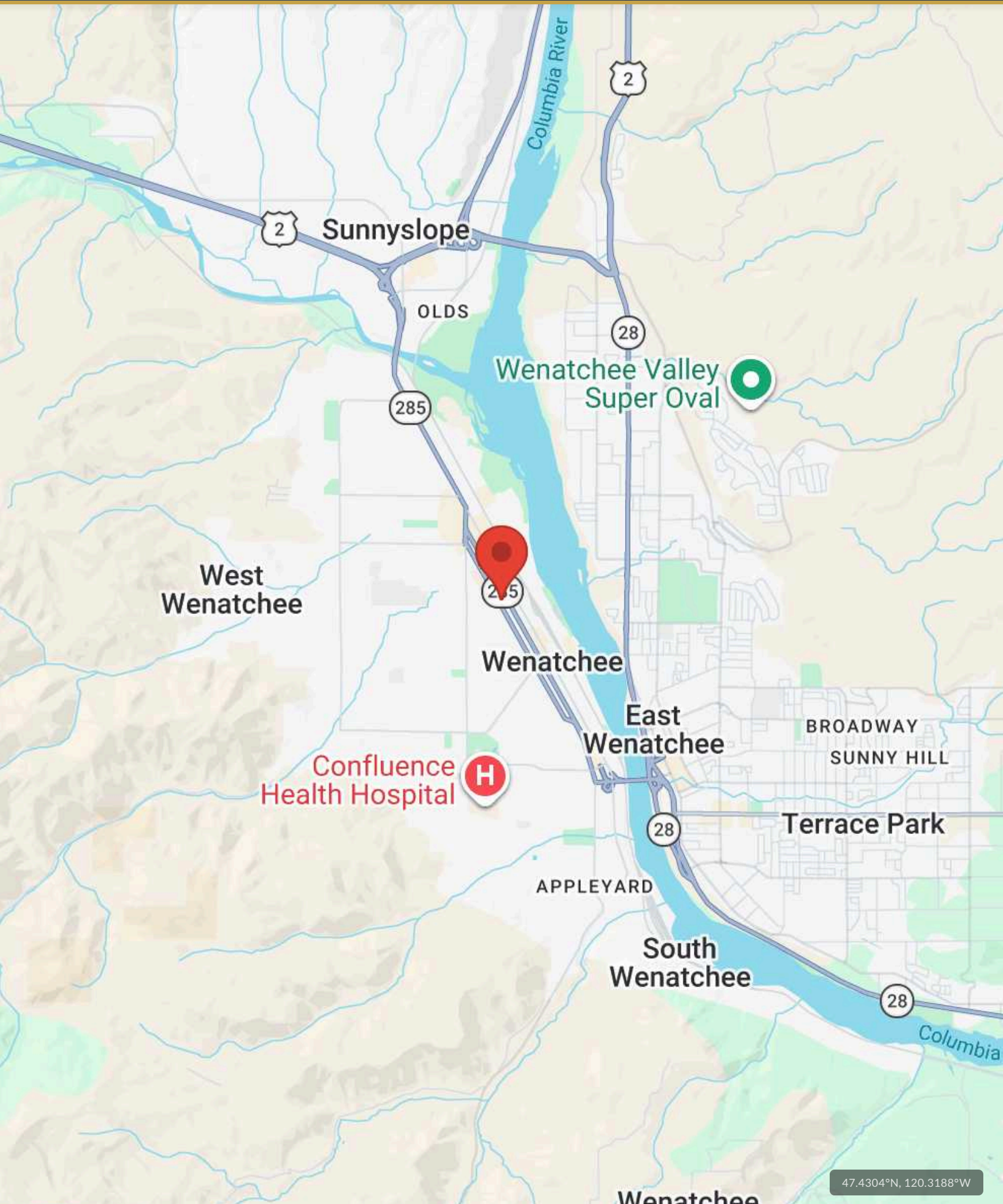
TYPE

NNN

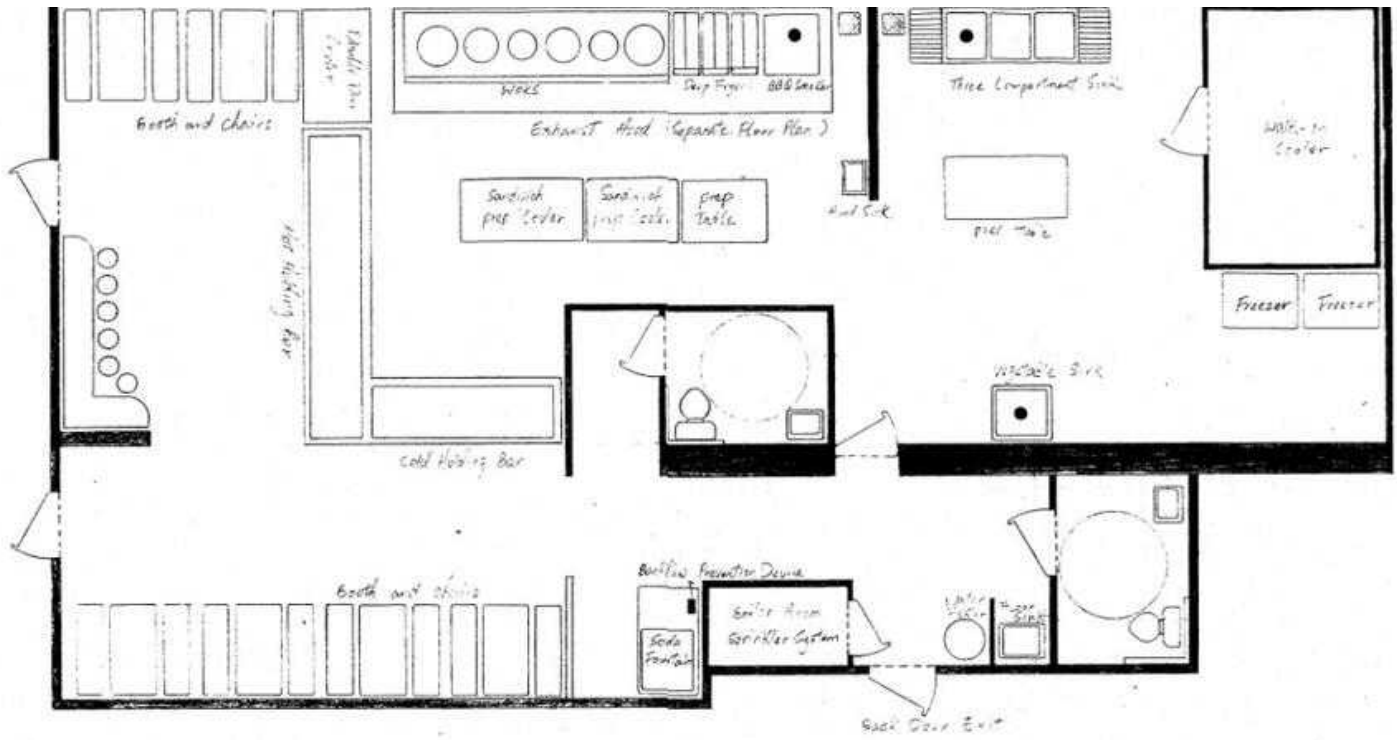
USE

Restaurant

Small to midsize retails, 50,000 VPD, Great storefront and signage exposure, retail floor and private restroom area for back of house.



47.4304°N, 120.3188°W



1840 Sqft with hood system

Market Overview



POPULATION 45 ¹	AREA 83 sq mi
ELEVATION 778 ft	TIME ZONE Pacific Time Zone
COUNTY Chelan County	INCORPORATED 1892
STATE Washington	

Market Overview: Wenatchee, WA

Wenatchee (wen-ACH-ee) is the county seat of and the most populous city in Chelan County, Washington, United States. The population was 35,508 as of the 2020 census. The city lies at the confluence of the Columbia and Wenatchee rivers near the eastern foothills of the Cascade Range in north-central Washington. Wenatchee is on the west side of the Columbia River in Chelan County, across from the city of East Wenatchee in Douglas County. The city was named for the Wenatchi, a Native American tribe that inhabited the area around the confluence at the time of European-American contact. The name is a Sahaptin word that means "river which comes [or whose source is] from canyons" or "robe of the rainbow". Awenatchela means "people at the source [of a river]". The city of Wenatchee shares its name with the Wenatchee River, Lake Wenatchee and the Wenatchee National Forest.

DEMOGRAPHIC SNAPSHOT

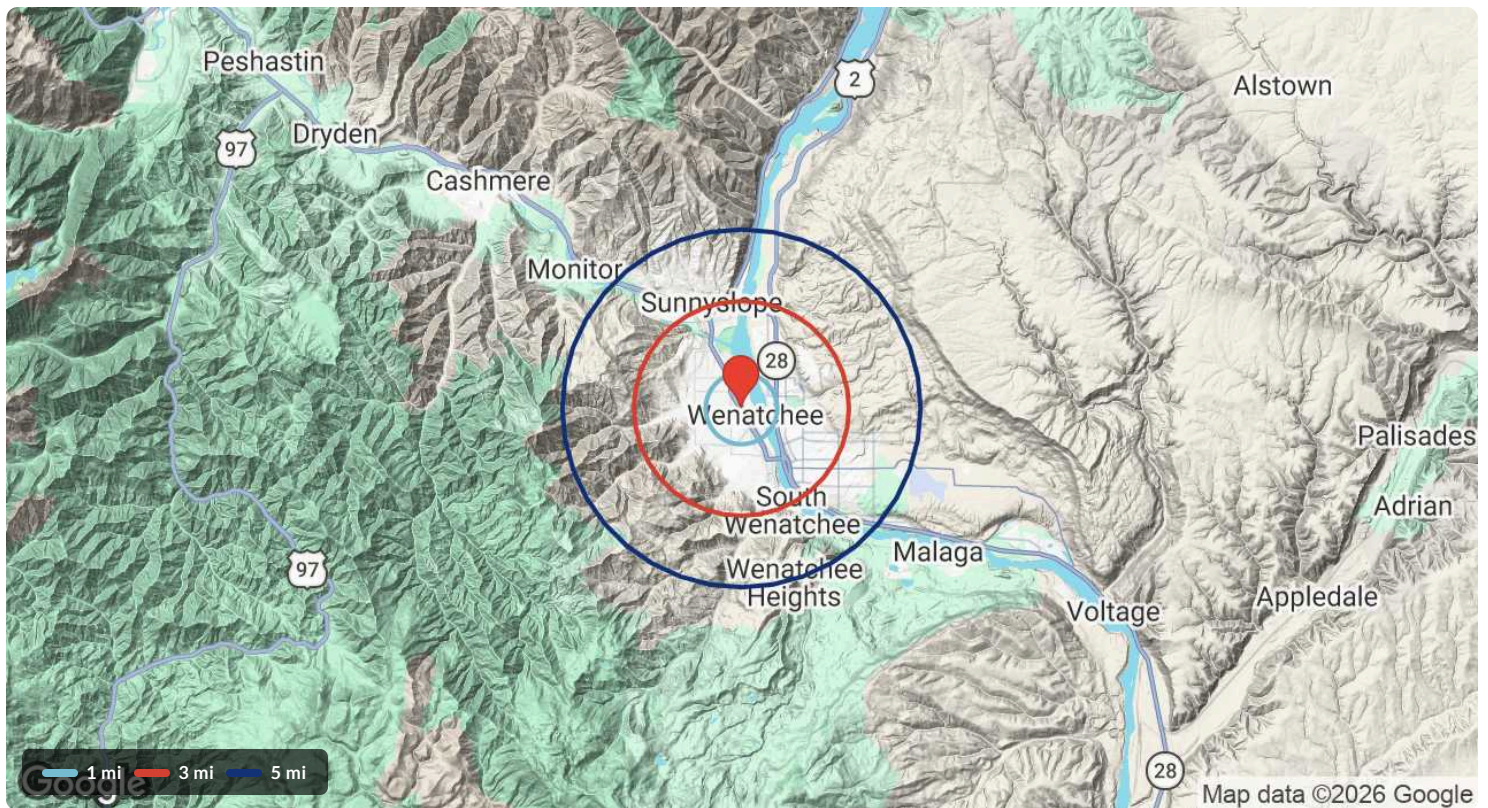
1-MILE RADIUS		3-MILE RADIUS		5-MILE RADIUS	
Population	11,388	Population	61,554	Population	78,038
Median HH Income	\$64,131	Median HH Income	\$78,013	Median HH Income	\$80,927
Households	4,827	Households	23,530	Households	29,385

Source: ESRI / ArcGIS Business Analyst

Demographics (Detail)

POPULATION				1 MILE	3 MILE	5 MILE
2000 Population				10,344	47,070	57,305
2010 Population				10,455	54,045	66,636
2025 Population				11,388	61,554	78,038
2030 Population				11,839	63,564	81,051
2025-2030 Growth Rate				0.78%	0.64%	0.76%
2025 Daytime Population				21,768	67,978	80,135

HOUSEHOLDS	1 MILE	3 MILE	5 MILE	2025 HOUSEHOLD INCOME			
				1 MILE	3 MILE	5 MILE	
2000 Total Households	4,179	17,789	21,421	less than \$15,000	579	1,761	2,048
2010 Total Households	4,247	20,566	25,092	\$15,000-\$24,999	230	935	1,110
2025 Total Households	4,827	23,530	29,385	\$25,000-\$34,999	439	1,523	1,841
2030 Total Households	5,068	24,437	30,677	\$35,000-\$49,999	610	2,499	3,057
2025 Avg. Household Size	2.26	2.57	2.61	\$50,000-\$74,999	913	4,403	5,246
2025 Owner Occupied Housing	1,971	14,351	19,168	\$75,000-\$99,999	907	3,996	4,659
2030 Owner Occupied Housing	2,098	15,319	20,436	\$100,000-\$149,999	656	3,905	5,240
2025 Renter Occupied Housing	2,856	9,179	10,217	\$150,000-\$199,999	270	2,178	2,872
2030 Renter Occupied Housing	2,970	9,118	10,241	\$200,000 or greater	224	2,330	3,313
2025 Vacant Housing	343	1,224	1,443	Median HH Income	\$64,131	\$78,013	\$80,927
2025 Total Housing	5,170	24,754	30,828	Average HH Income	\$77,777	\$103,381	\$109,405



Source: ESRI / ArcGIS Business Analyst

Mission Village

212 Fifth Street, Wenatchee, WA, 98801



PRESENTED BY

Chad Hamilton

Manager

509.884.6381 Chad@ncw-commercial.com

Chau Birks

509.884.6381 Chau@ncw-commercial.com

DISCLAIMER

The information contained in the following offering memorandum is proprietary and strictly confidential. It is intended to be reviewed only by the party receiving it from Center Investments, Inc. and it should not be made available to any other person or entity without the written consent of Center Investments, Inc..

By taking possession of and reviewing the information contained herein the recipient agrees to hold and treat all such information in the strictest confidence. The recipient further agrees that recipient will not photocopy or duplicate any part of the offering memorandum. If you have no interest in the subject property, please promptly return this offering memorandum to Center Investments, Inc.. This offering memorandum has been prepared to provide summary, unverified financial and physical information to prospective purchasers, and to establish only a preliminary level of interest in the subject property. The information contained herein is not a substitute for a thorough due diligence investigation. Center Investments, Inc. has not made any investigation, and makes no warranty or representation with respect to the income or expenses for the subject property, the future projected financial performance of the property, the size and square footage of the property and improvements, the presence or absence of contaminating substances, PCBs or asbestos, the compliance with local, state and federal regulations, the physical condition of the improvements thereon, or financial condition or business prospects of any tenant, or any tenant's plans or intentions to continue its occupancy of the subject property. The information contained in this offering memorandum has been obtained from sources we believe reliable; however, Center Investments, Inc. has not verified, and will not verify, any of the information contained herein, nor has Center Investments, Inc. conducted any investigation regarding these matters and makes no warranty or representation whatsoever regarding the accuracy or completeness of the information provided. All potential buyers must take appropriate measures to verify all of the information set forth herein. Prospective buyers shall be responsible for their costs and expenses of investigating the subject property.

PROPERTY SHOWINGS ARE BY APPOINTMENT ONLY.
PLEASE CONTACT THE Center Investments, Inc. ADVISOR FOR MORE DETAILS.



Center Investments, Inc.

18 N. Mission Suite D
Wenatchee, WA 98801

509.884.6381

www.ncw-commercial.com