

FOR LEASE

# 1501 15TH ST NW SUITE 101-102

*4,420 SF Industrial Space Divisible to  
2,210 SF for Lease in Auburn, WA*

1501 15TH ST NW, STE 101-102 | AUBURN



FOR LEASE



### PROPERTY FEATURES

TOTAL SF	4,420 SF
OFFICE SF	2,018 SF
DIVISIBLE TO	2,210 SF
SUITE 101	2,210 SF 1,168 SF HVAC Office 1 GL Door
SUITE 102	2,210 SF 850 SF Office 1 GL Door
LEASE RATE	\$0.80 PSF Shell \$1.25 PSF Office

### KRAIG HEETER, SIOR

Executive Vice President  
206.248.7313  
kraig.heeter@kidder.com

### COLT SHERRELL

Associate  
206.498.4566  
colt.sherrell@kidder.com

### KIDDER.COM

This information supplied herein is from sources we deem reliable. It is provided without any representation, warranty, or guarantee, expressed or implied as to its accuracy. Prospective Buyer or Tenant should conduct an independent investigation and verification of all matters deemed to be material, including, but not limited to, statements of income and expenses. Consult your attorney, accountant, or other professional advisor. All Kidder Mathews designs are the sole property of Kidder Mathews. Branded materials and layouts are not authorized for use by any other firm or person.



FOR LEASE

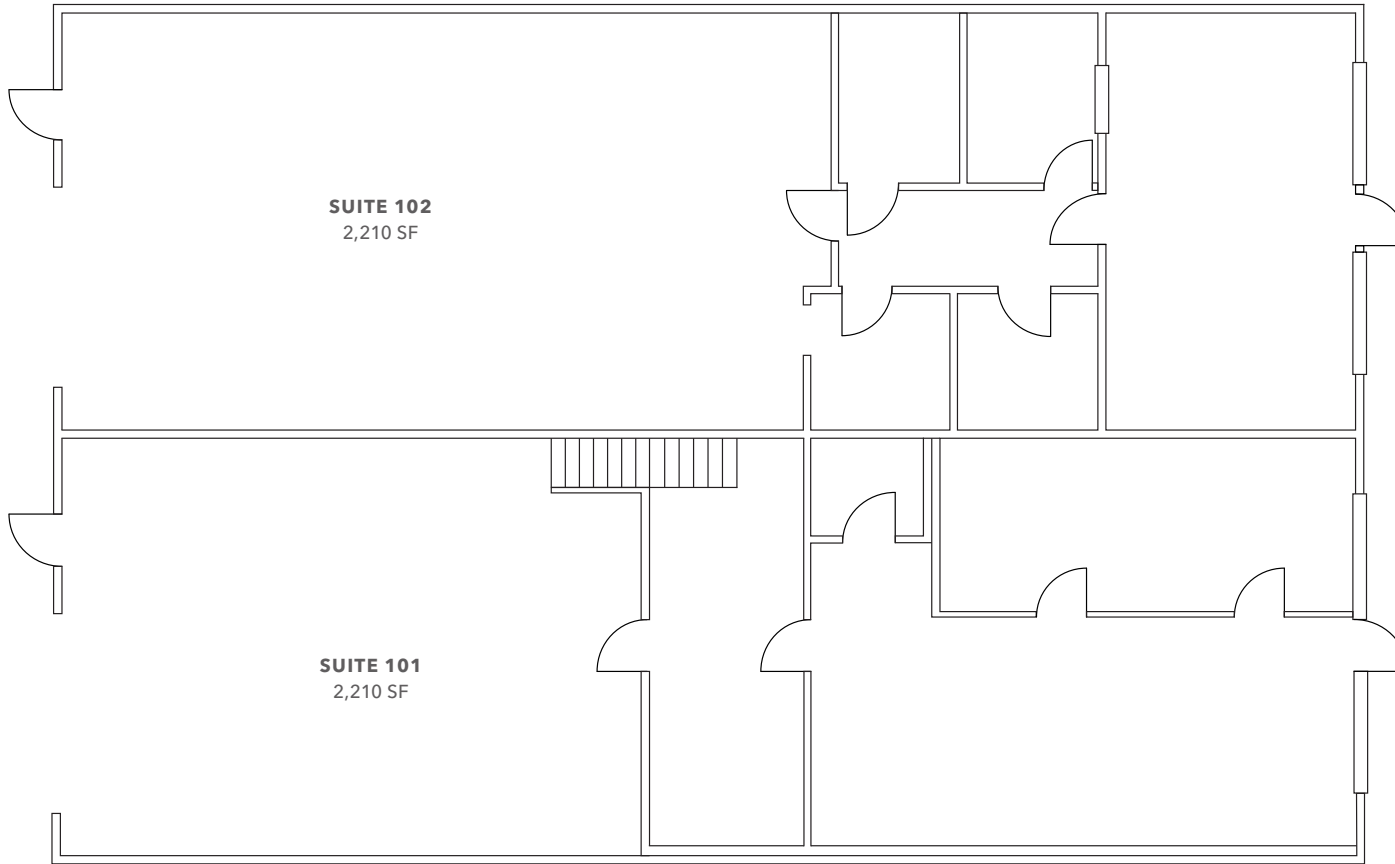
# FLOOR PLAN

4,420 SF

TOTAL

2,018 SF

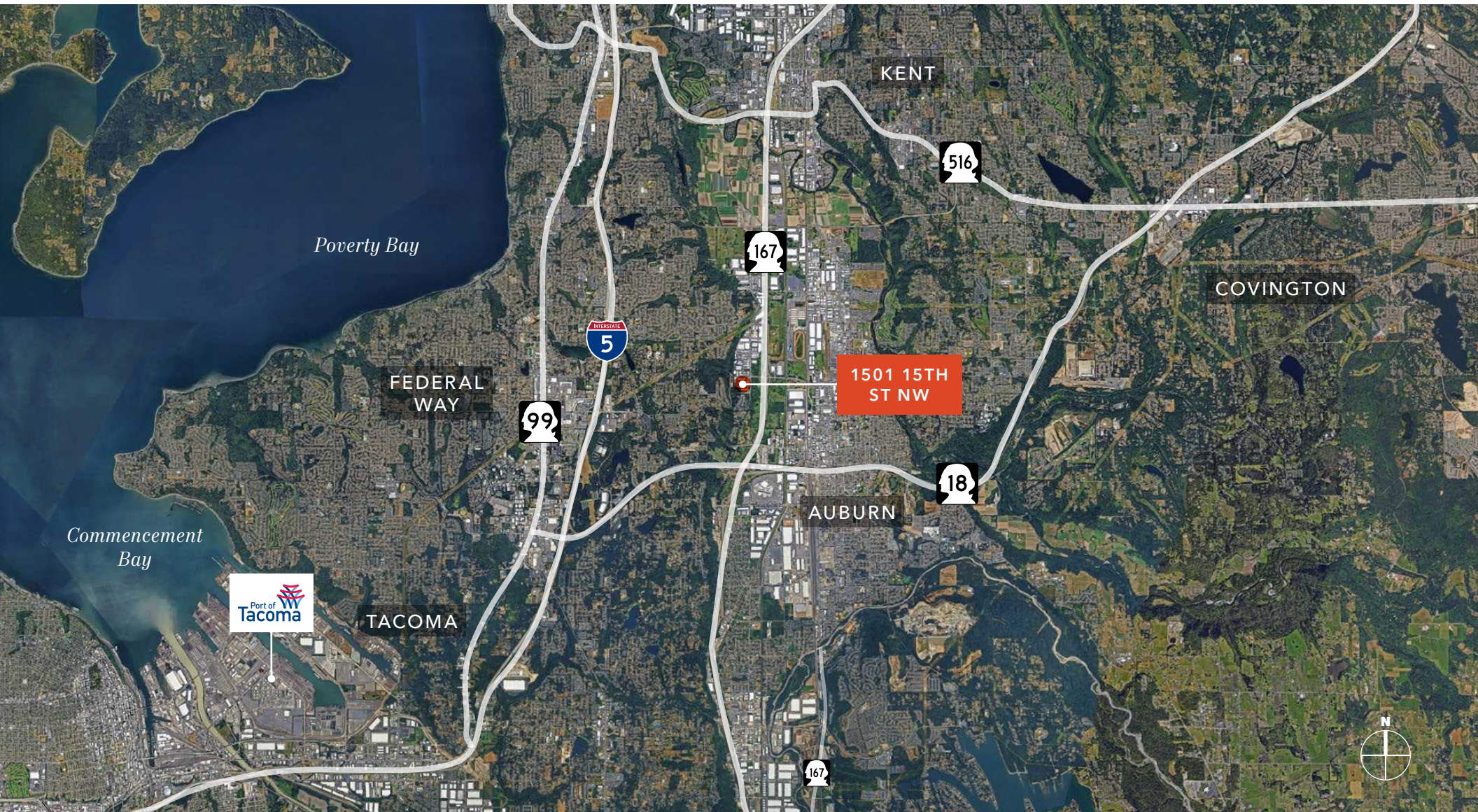
TOTAL OFFICE



[KIDDER.COM](http://KIDDER.COM)

This information supplied herein is from sources we deem reliable. It is provided without any representation, warranty, or guarantee, expressed or implied as to its accuracy. Prospective Buyer or Tenant should conduct an independent investigation and verification of all matters deemed to be material, including, but not limited to, statements of income and expenses. Consult your attorney, accountant, or other professional advisor. All Kidder Mathews designs are the sole property of Kidder Mathews. Branded materials and layouts are not authorized for use by any other firm or person.





[KIDDER.COM](http://KIDDER.COM)

This information supplied herein is from sources we deem reliable. It is provided without any representation, warranty, or guarantee, expressed or implied as to its accuracy. Prospective Buyer or Tenant should conduct an independent investigation and verification of all matters deemed to be material, including, but not limited to, statements of income and expenses. Consult your attorney, accountant, or other professional advisor. All Kidder Mathews designs are the sole property of Kidder Mathews. Branded materials and layouts are not authorized for use by any other firm or person.