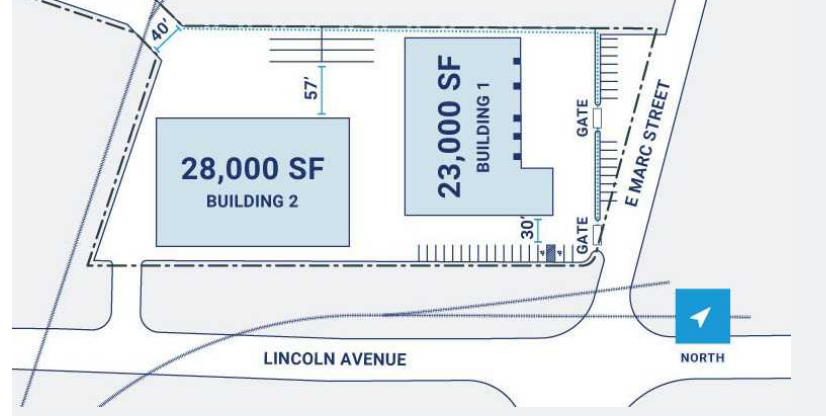


1916 Marc Avenue

Tacoma, WA

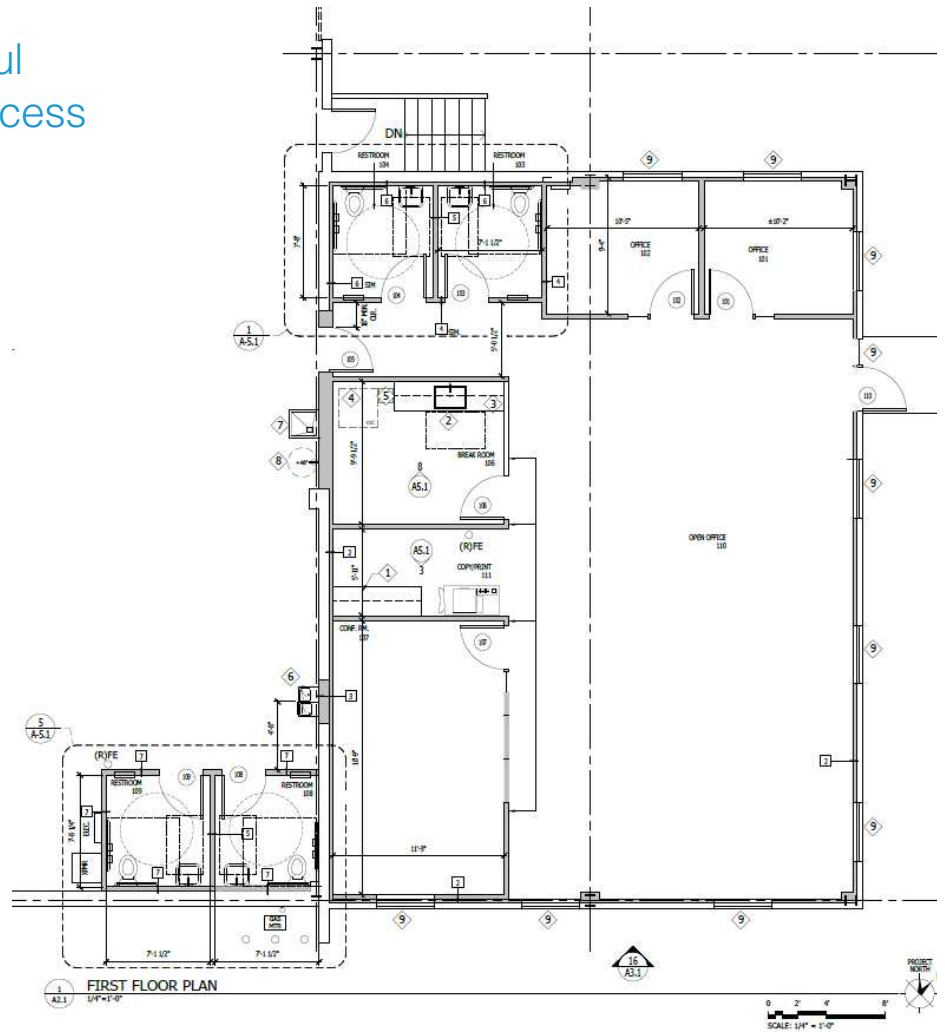




Located in the Heart of the Port of Tacoma Adjacent to the Heavy Haul Corridor of Lincoln Avenue with Access Off Marc Avenue.

Property Highlights

- + 3 Total Acres
- + Building 1: 23,000 SF / 2,000 SF Office
 - + 5 dock doors (2 levelers)
 - + 3 oversized grade doors (16' x 16')
 - + 18' - 20' Clear Height
 - + Heavy Power
- + Building 2: 28,000 SF
 - + 3 oversized grade doors (18' x 18')
 - + Clear span
 - + 28' Clear Height
 - + 800 amps of 277/480 volt 3-phase power
- + Call listing brokers for rates
- + Available January 2027
- + Port Maritime Industrial (PMI) Zoning
- + Paved and Fenced Yard
- + Multiple Ingress/Egress Points
- + Located on the Heavy Haul Corridor
- + Fully Secured Campus



CenterPoint Lincoln Logistics | 1916 Marc Ave, Tacoma, WA

Location Advantages



Total Size of Buildings

23,000 SF + 28,000 SF



Office Size

2,200 SF (updated in 2021)



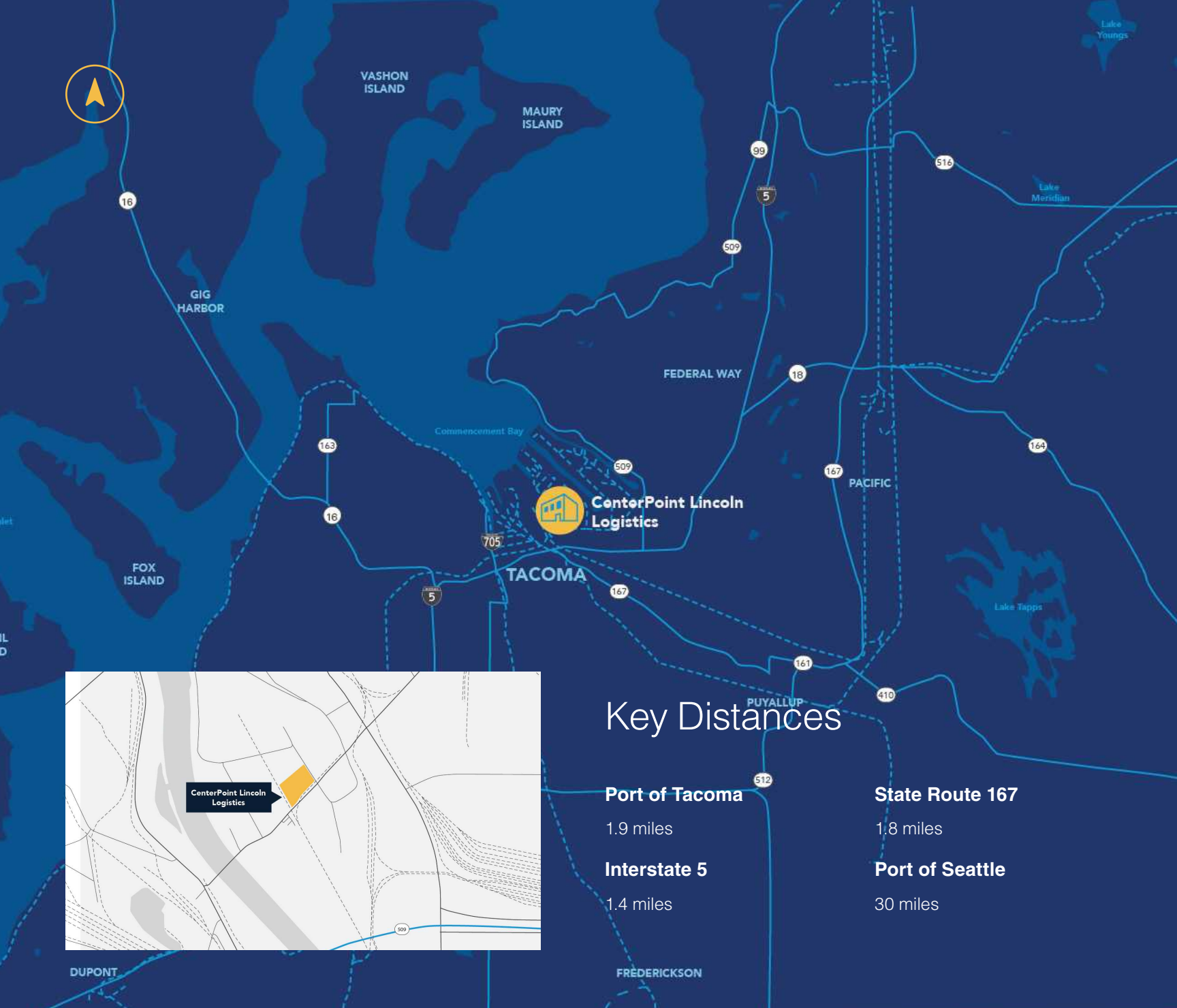
Yard

Fully secured campus layout



Zoning

Port Maritime Industrial (PMI)



Key Distances

Port of Tacoma

1.9 miles

Interstate 5

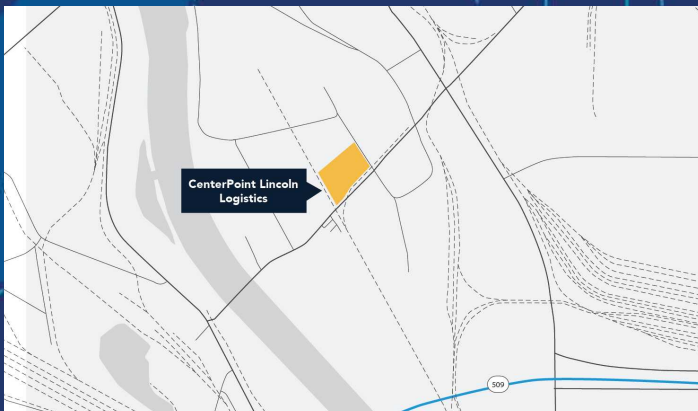
1.4 miles

State Route 167

1.8 miles

Port of Seattle

30 miles



About CenterPoint

CenterPoint is an industrial real estate company made up of dedicated thinkers, innovators and leaders with the creativity and know-how to tackle the industry's toughest challenges. And it's those kinds of problems—the delicate, the complex, the seemingly-impossible—that we relish most. Because with an agile team, substantial access to capital and industry-leading expertise, those are exactly the kinds of problems we're built to solve.

centerpoint.com

Owned and Developed By



Greg Stumm
213.488.8692
gstumm@centerpoint.com

Wes Payne
650.888.8600
wpayne@centerpoint.com

Exclusive Marketing Agent



Billy Moultrie
253.444.3022
bmoultrie@lee-associates.com

Christian Mattson, SIOR
253.444.3021
cmattson@lee-associates.com