



FOR LEASE

2515 South Tacoma Way

Tacoma, WA 98409

Freestanding retail warehouse with high visibility on primary South Tacoma Way arterial.

PROPERTY HIGHLIGHTS

- + 18,456 SF warehouse (983 SF office)
- + Dock-high loading with secure truck court
- + 5 - 10'x12x grade-level doors
- + Ideal for repair shop or storage
- + 14' clear height
- + Quick access to Tacoma Mall, University Place, and Fircrest
- + Less than 2 miles from I-5, I-705, and SR-509
- + Ample parking
- + **\$14,765/month, NNN (\$0.80 PSF blended)**
- + **Available Now**

KYLE SCHIPPER, SIOR
 Partner
 +1 253 203 1320
 kschipper@nai-psp.com

ARA HAKOBYAN
 Managing Broker
 +1 425 241 5753
 arah@kw.com

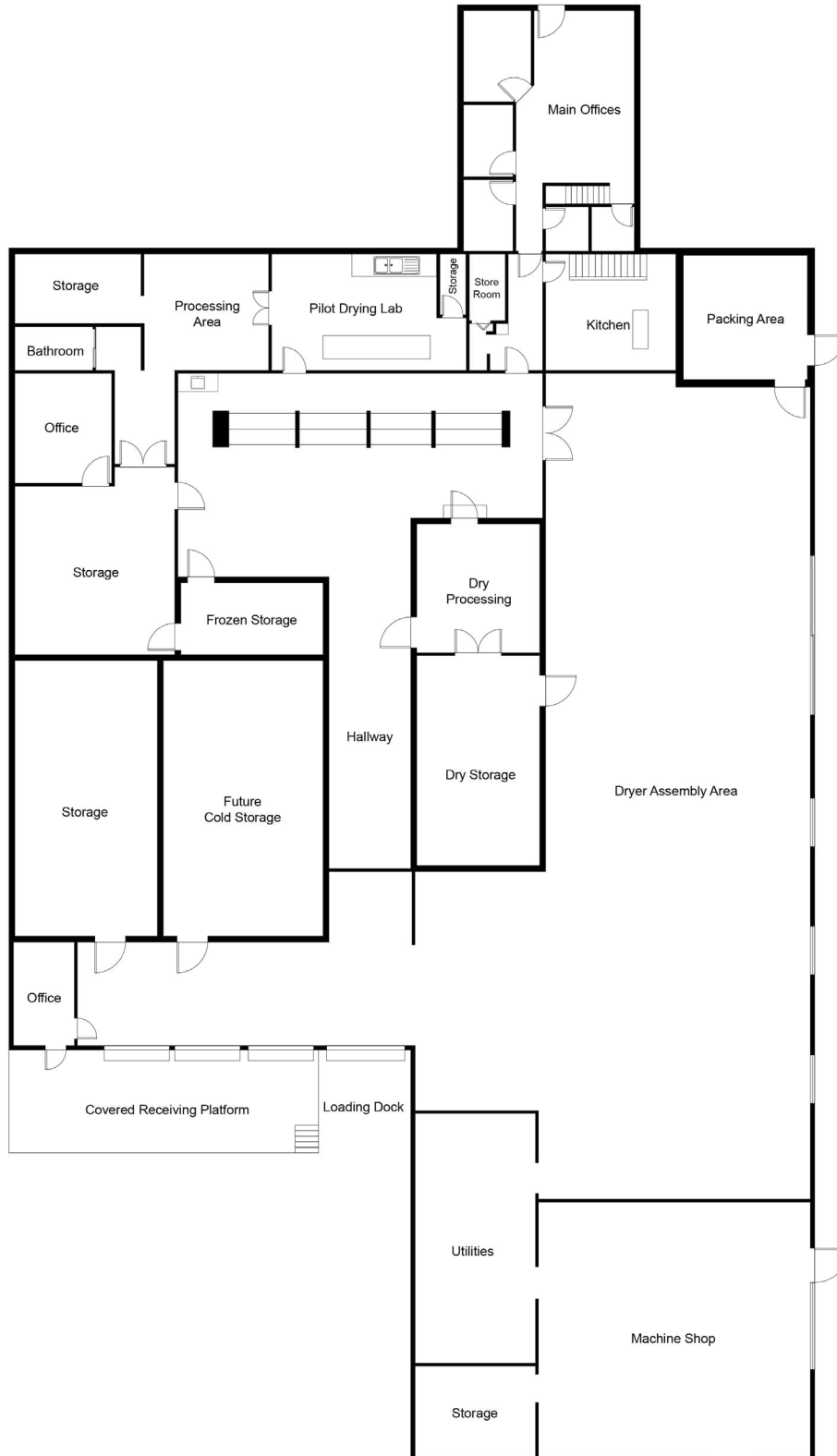
TOTAL SF
18,456 SF

LOT SIZE
0.70 Acres
(30,492 SF)



THE INFORMATION CONTAINED HEREIN HAS BEEN GIVEN TO US BY THE OWNER OF THE PROPERTY OR OTHER SOURCES WE DEEM RELIABLE. WE HAVE NO REASON TO DOUBT ITS ACCURACY, BUT WE DO NOT GUARANTEE IT. ALL INFORMATION SHOULD BE VERIFIED PRIOR TO PURCHASE OR LEASE.

Floor Plan



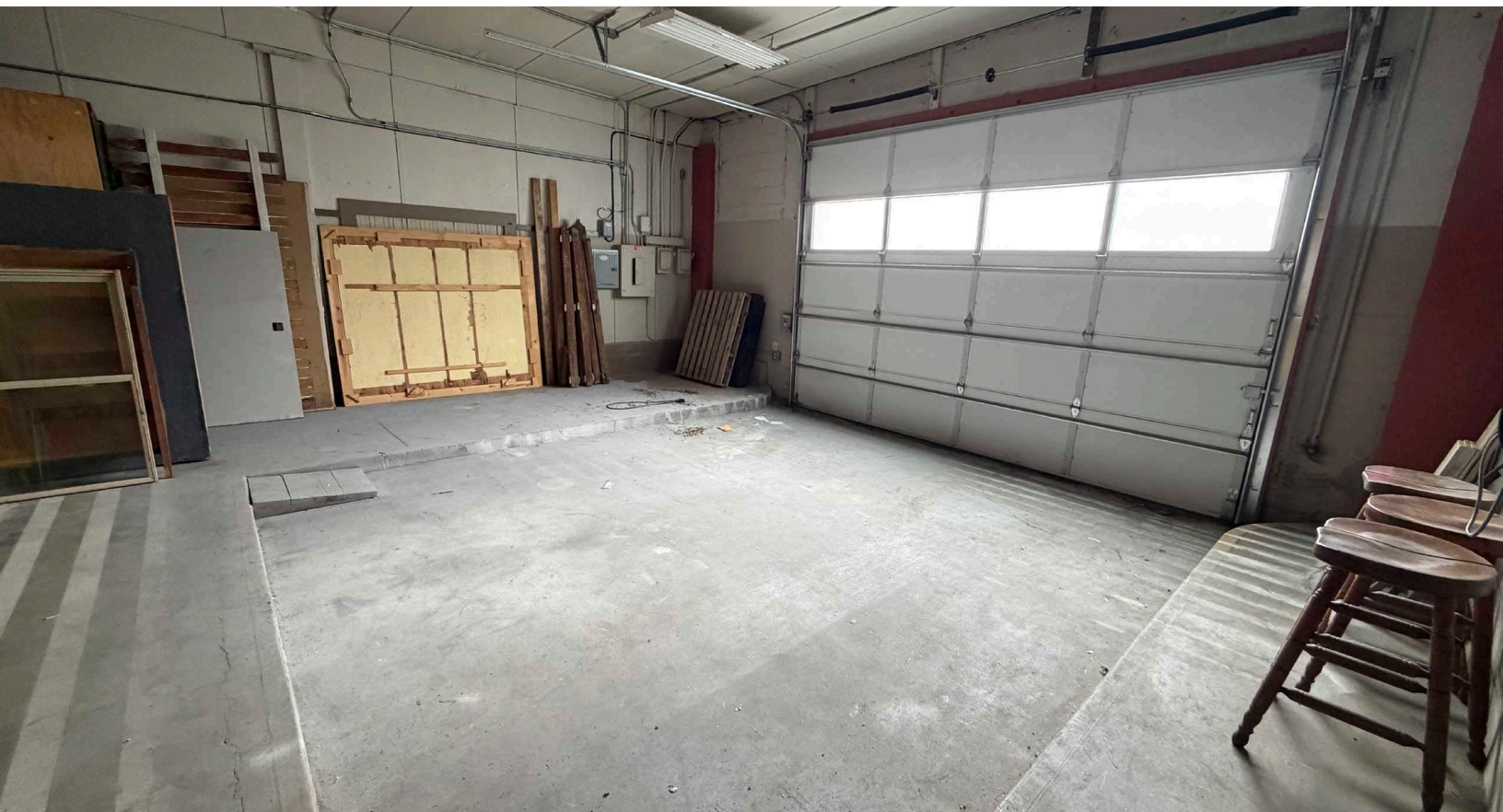
**Measurements are approximate and not to scale. This floor plan is intended for illustration only.*

KYLE SCHIPPER, SIOR
Partner
+1 253 203 1320
kschipper@nai-psp.com

ARA HAKOBYAN
Managing Broker
+1 425 241 5753
arah@kw.com



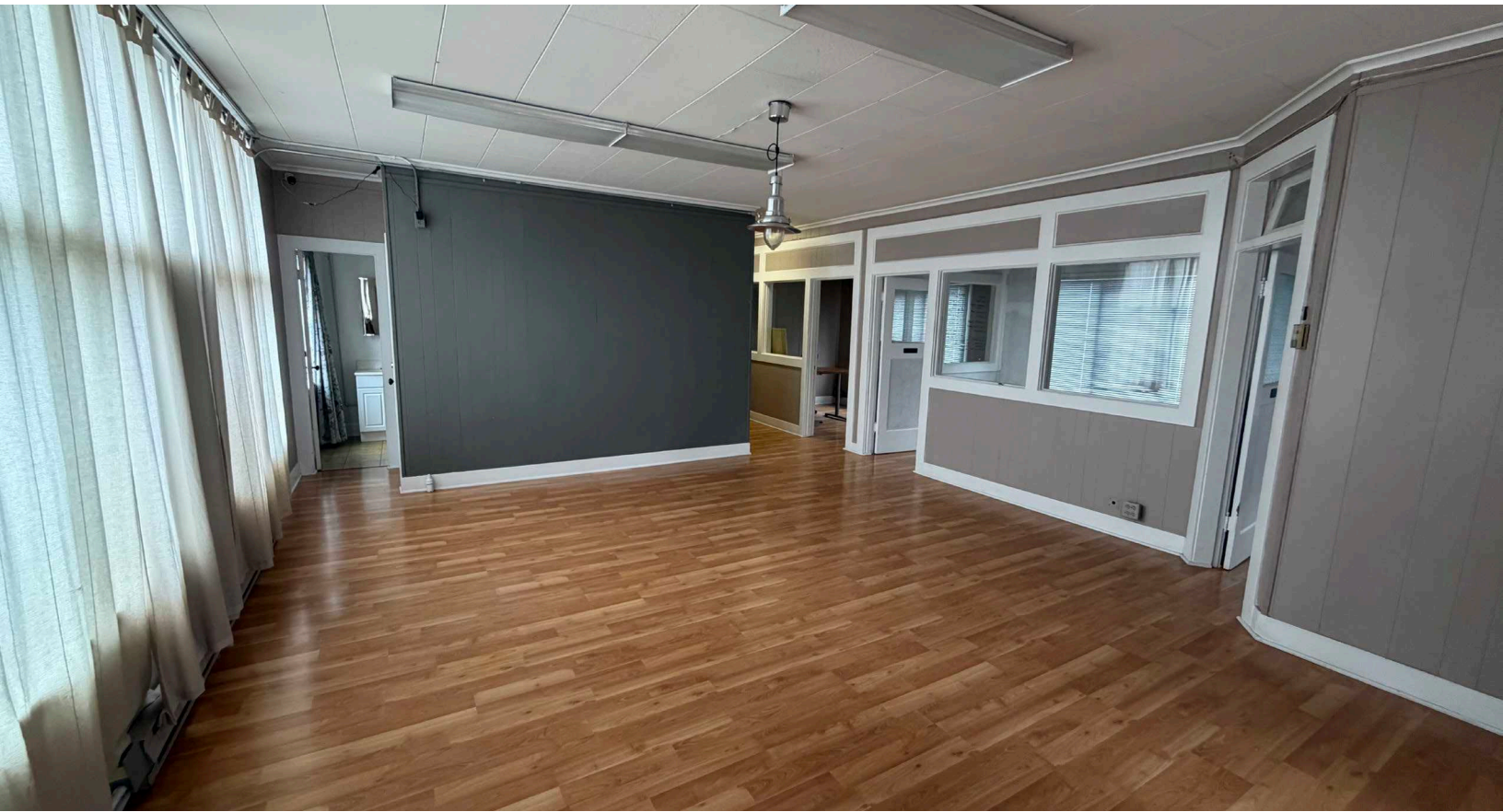
*Prime frontage on
South Tacoma Way,
ample parking*



KYLE SCHIPPER, SIOR
Partner
+1 253 203 1320
kschipper@nai-psp.com

ARA HAKOBYAN
Managing Broker
+1 425 241 5753
arah@kw.com





KYLE SCHIPPER, SIOR
Partner
+1 253 203 1320
kschipper@nai-pp.com

ARA HAKOBYAN
Managing Broker
+1 425 241 5753
arah@kw.com



Area Overview



KYLE SCHIPPER, SIOR
Partner
+1 253 203 1320
kschipper@nai-psp.com

ARA HAKOBYAN
Managing Broker
+1 425 241 5753
arah@kw.com

