

# 425

WESTLAKE AVE N | SEATTLE



**NEWMARK**

**7,133 SF**  
ground-floor retail space

**12,525 SF**  
second floor office space

# Welcome to the heart of South Lake Union.

## UNMATCHED LOCATION

Prominent location in SLU, easily accessible to a highly affluent and diverse demographic.

## UNIQUE OFFERING

Ground-floor retail opportunity for a retail tenant looking to embrace the building's character to elevate their brand. Ideal uses include elevated neighborhood services, boutique fitness, experiential concepts or specialty retail.

## ELEVATED OPPORTUNITY

The second floor office space is perfect for a boutique firm, creative agency, venture-backed startup, or professional services group looking for identity, signage presence and proximity to tech, biotech or within the broader innovation corridor.

## AUTHENTIC CHARACTER

Creative, restored architecture perfect for design-forward office users and boutique or experiential retailers. Rare, true brick-and-beam architecture in a modern landscape.

## HIGH DEMAND

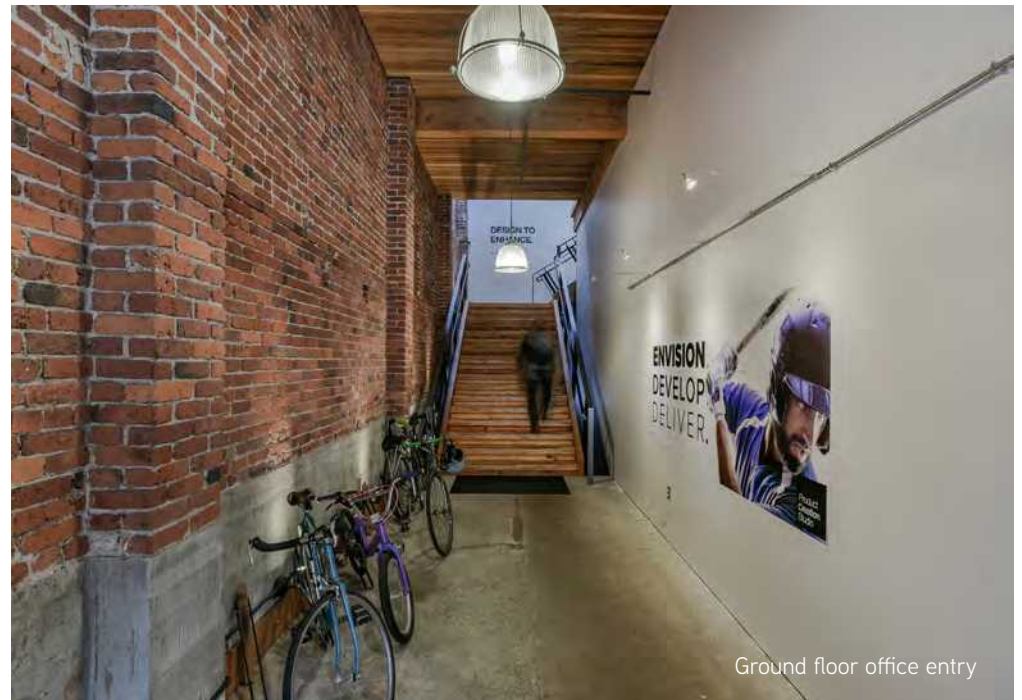
Ideal location for retail and dining experiences due to proximity to residential neighborhoods, corporate offices, and tourist destinations, ensuring a steady stream of high-quality foot traffic and consumer engagement.





## Where community thrives.

With its authentic character, exposed structure, and walkable urban setting, 425 Westlake Ave N offers a rare opportunity to blend activated ground-floor retail with highly desirable boutique office space above. Perfect for tenant brands looking to complement the building's architectural integrity while capitalizing on South Lake Union's dense residential, tech, and life science ecosystem.



Ground floor office entry

# Floor 1

425

APPROX.  
**7,133 SF**

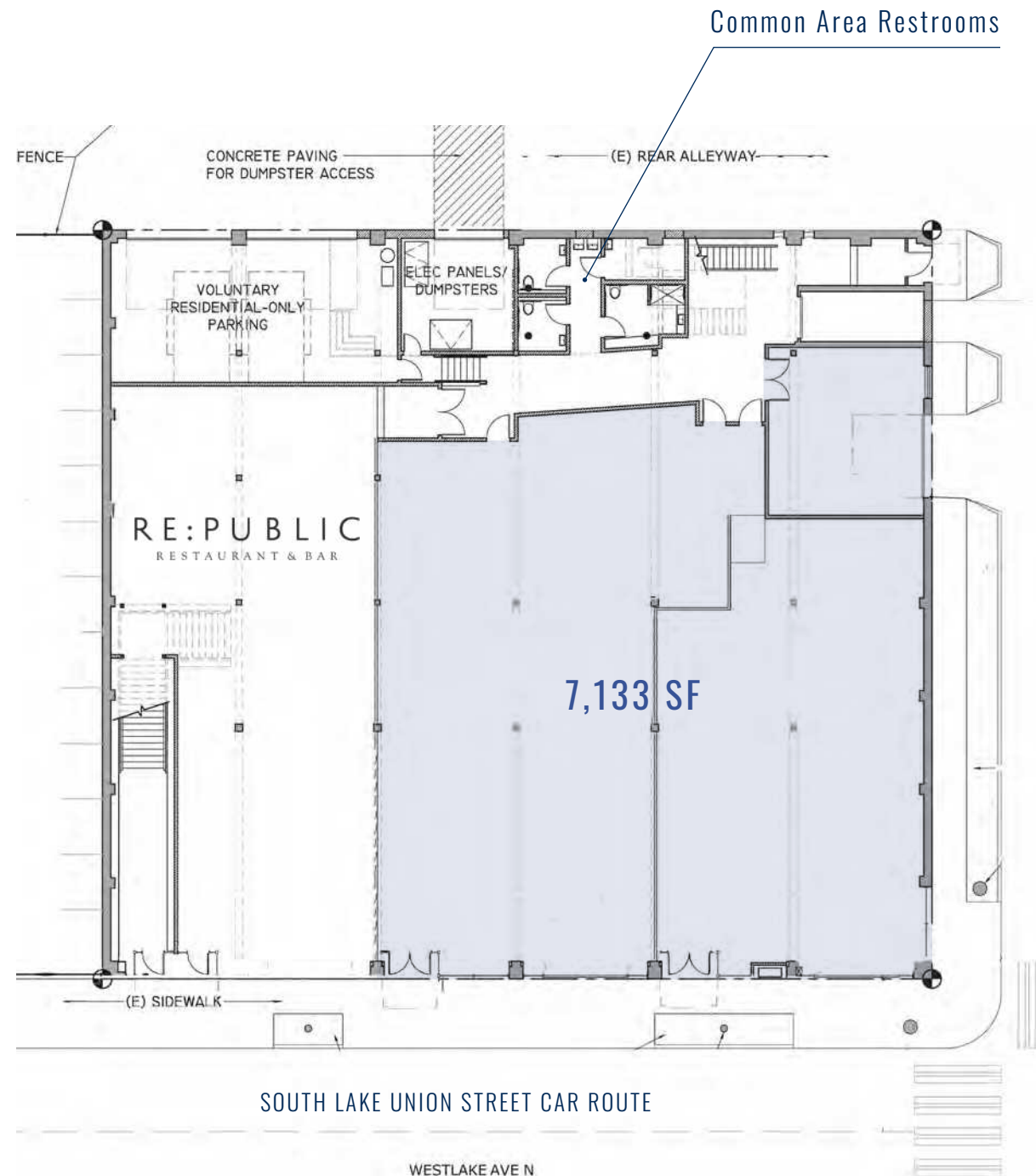
**ASKING RATE**  
Contact Broker

**NNN ESTIMATE**  
TBD

**TI ALLOWANCE**  
Negotiable

**AVAILABLE**  
Available Now

- Activated ground-floor retail in one of Seattle's most walkable, high-growth corridors.
- Perfect for users offering elevated neighborhood services, boutique fitness, experiential concepts or specialty retail.



# Floor 2

APPROX.  
**12,525 SF**

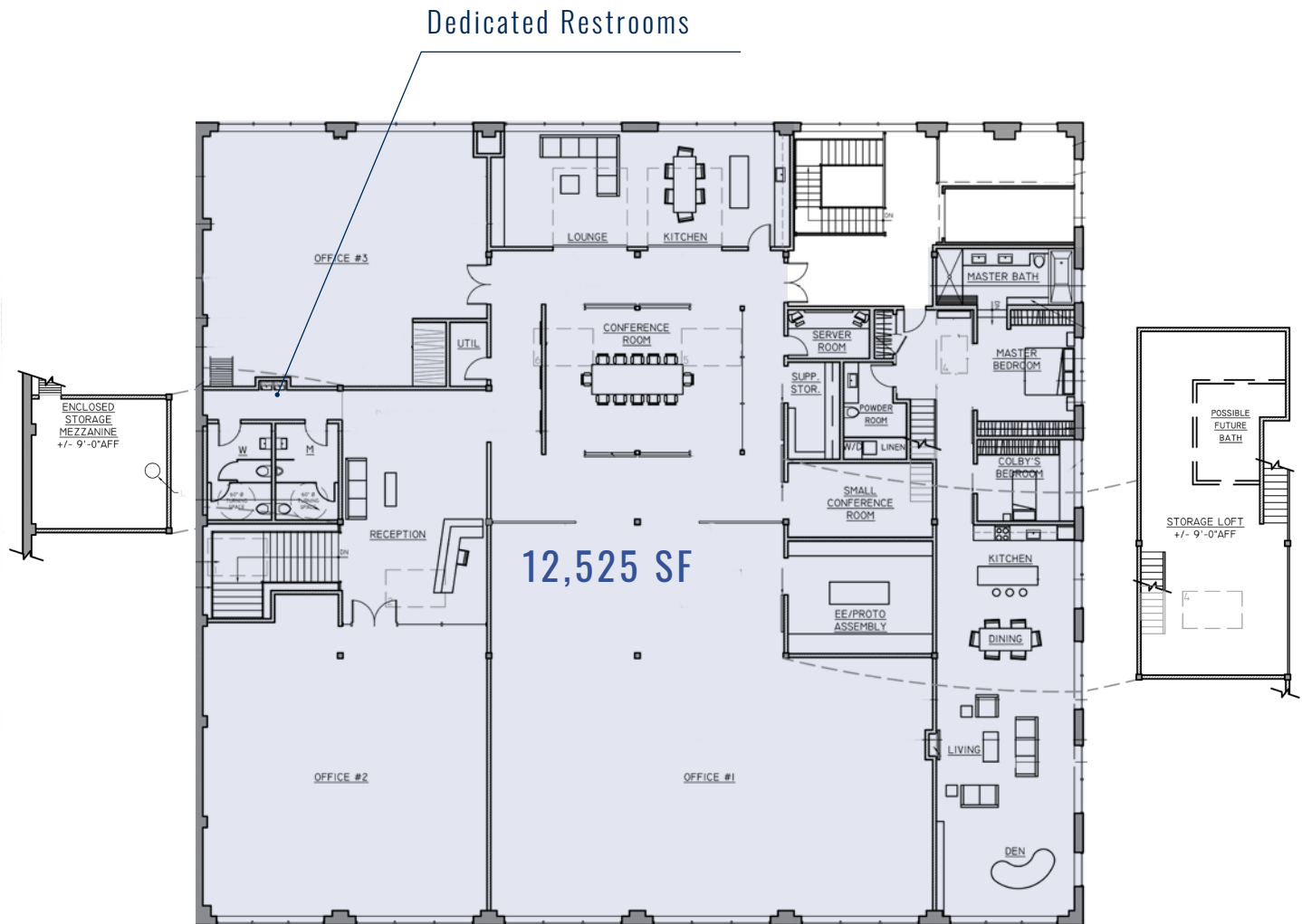
**ASKING RATE**  
Contact Broker

**NNN ESTIMATE**  
TBD

**TI ALLOWANCE**  
Negotiable

**AVAILABLE**  
Available Now

- Second floor office space well-suited for creative users, boutique firms, or users seeking presence and identity in a supply-constrained submarket. base.
- Perfect for a boutique firm, creative agency, venture-backed startup or professional services group.





## Where community thrives.

With the surrounding residential density, adjacent tech employers, local tourist attractions and nearby destination retail, the building sits at the intersection of top tourism activity, daily-needs traffic and a built-in professional customer base.

# It's all happening here.

Located in the heart of Seattle's tech scene, 425 Westlake Ave N is surrounded by an exciting mix of sights, shops, eats and activities at every turn.

**98**  
WALK  
SCORE

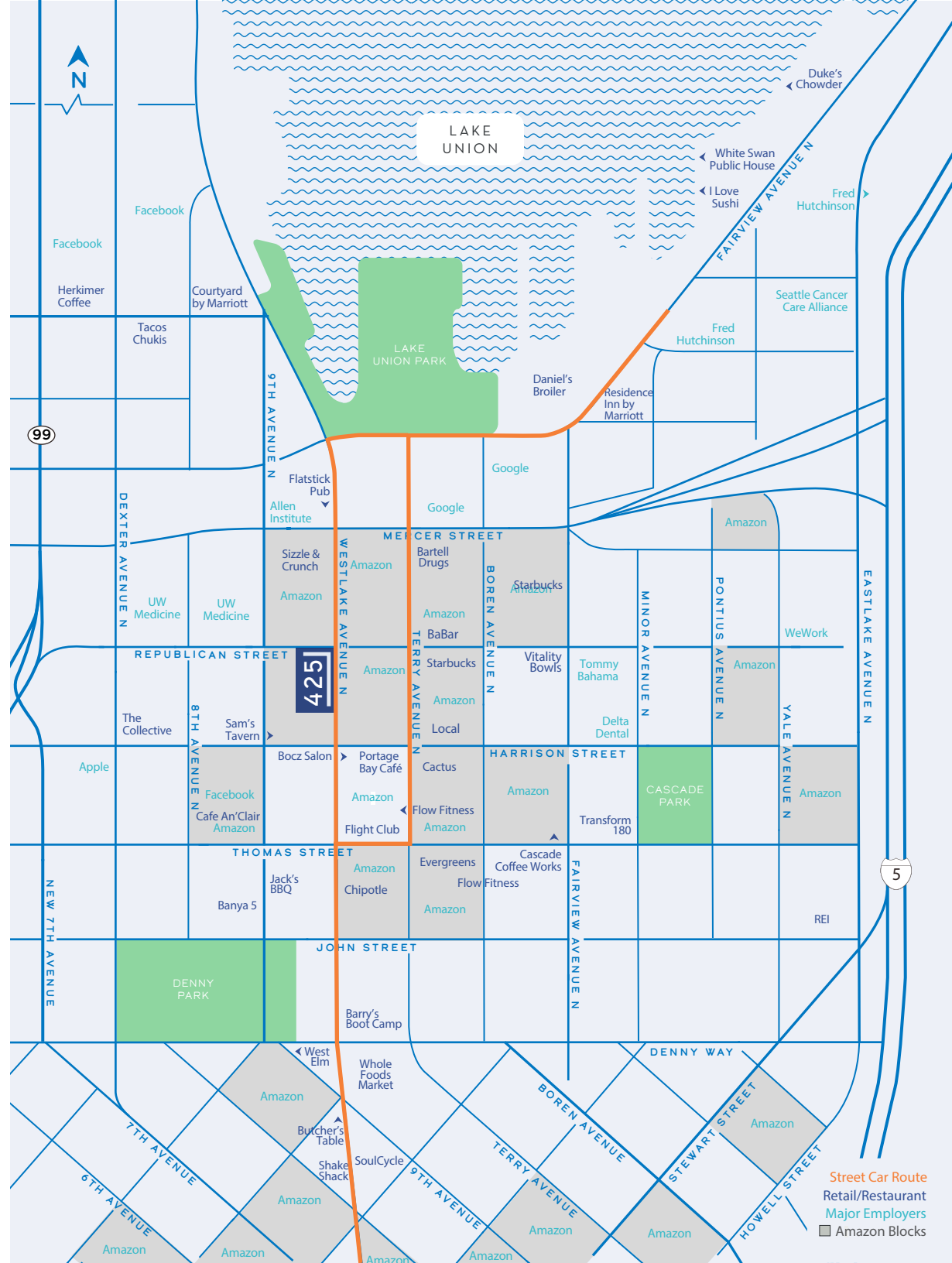
**90**  
TRANSIT  
SCORE

**85**  
BIKE  
SCORE

## MAJOR AREA RETAIL TENANTS



## MAJOR AREA EMPLOYERS





## A thriving retail hub.

Join the vibrant South Lake Union retail scene with day and night foot traffic. Top national and local retailers in the area include West Elm, Whole Foods, BaBar, Flight Club, Soulcycle, The Butcher's Table, Flatstick Pub, Barry's Bootcamp, and re:public (located onsite).



425

Google

amazon

amazon

amazon

amazon

Apple

UW Medicine

UW Medicine



# 425

WESTLAKE AVE N | SEATTLE

## Contact:

**ANNE MARIE KOEHLER**  
206.487.5167  
annemarie.koehler@nrmk.com

**ERIKA KOEHLER**  
206.487.5168  
erika.koehler@nrmk.com

**LUKE SIKMA**  
206.607.6599  
luke.sikma@nrmk.com



# NEWMARK

NEWMARK | 1420 5th Avenue, Suite 2600, Seattle, WA 98101 | [www.nrmk.com](http://www.nrmk.com)

The distributor of this communication is performing acts for which a real estate license is required. The information contained herein has been obtained from sources deemed reliable but has not been verified and no guarantee, warranty or representation, either express or implied, is made with respect to such information. Terms of sale or lease and availability are subject to change or withdrawal without notice. 06/26